


Opioid Crisis

July 2023

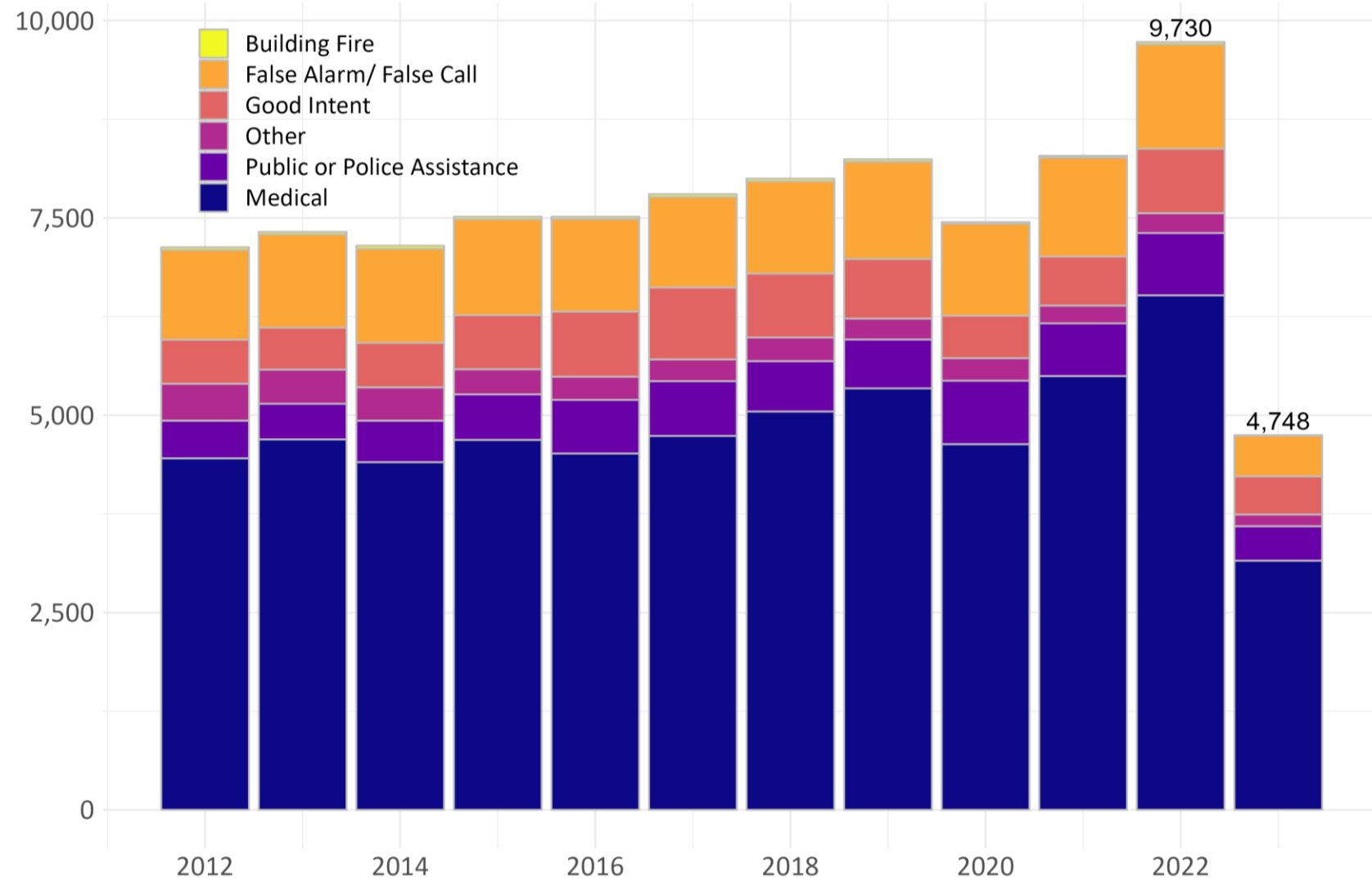




Burlington Police and Fire Incidents and Responses Overall

Burlington Fire Department Responses

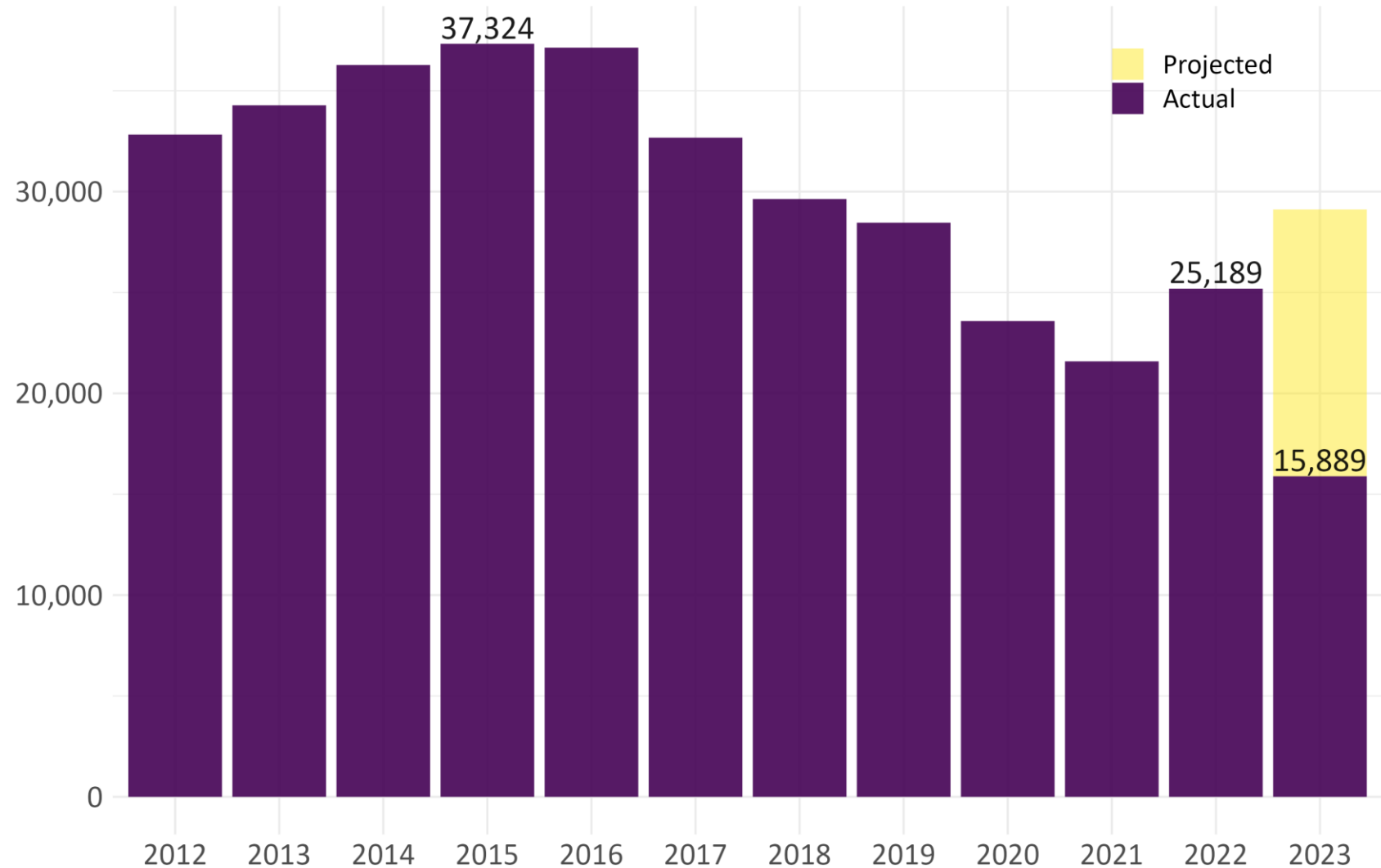
Medical calls make up around two-thirds of all BFD responses. Around 20% of these were to assisted living facilities, and around 7.5% were to downtown, an increase of 2.5% since 2012.



Data through June 23, 2023

Burlington Police Department Incidents

Overall, police incidents saw a large (42%) decrease from 2015 to 2021, and a sharp uptick from 2021-2022. Policy changes driving discretionary (officer initiated) incidents contribute to the initial decline, traffic stops decreased steadily from 5,840 in 2016 (15.7% of incidents that year) to 465 in 2022 (1.8% of incidents that year).

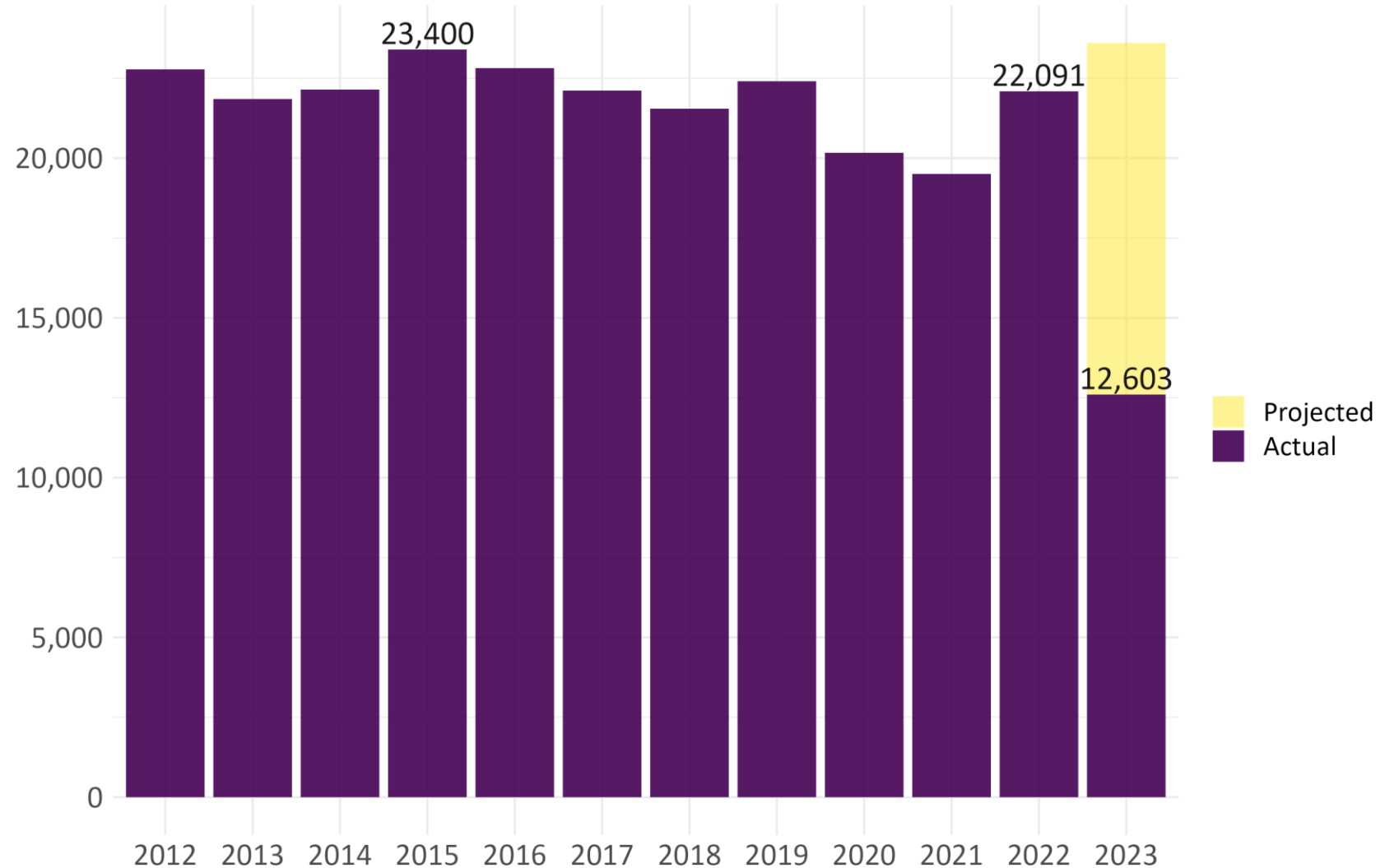


Data through Jul 23, 2023.

Projected based on 55% of past year's incidents that had occurred at that date.

Non-discretionary BPD Incidents

Non-discretionary incidents decreased by 17% from 2015 to 2021 and increased 13% in the following year. These are incidents reported from the community and can range from a 911 call for a 'Priority 1' response to a life-safety risk (such as a car crash or overdose) to an online report of stolen property. **Most incidents are not crimes.**

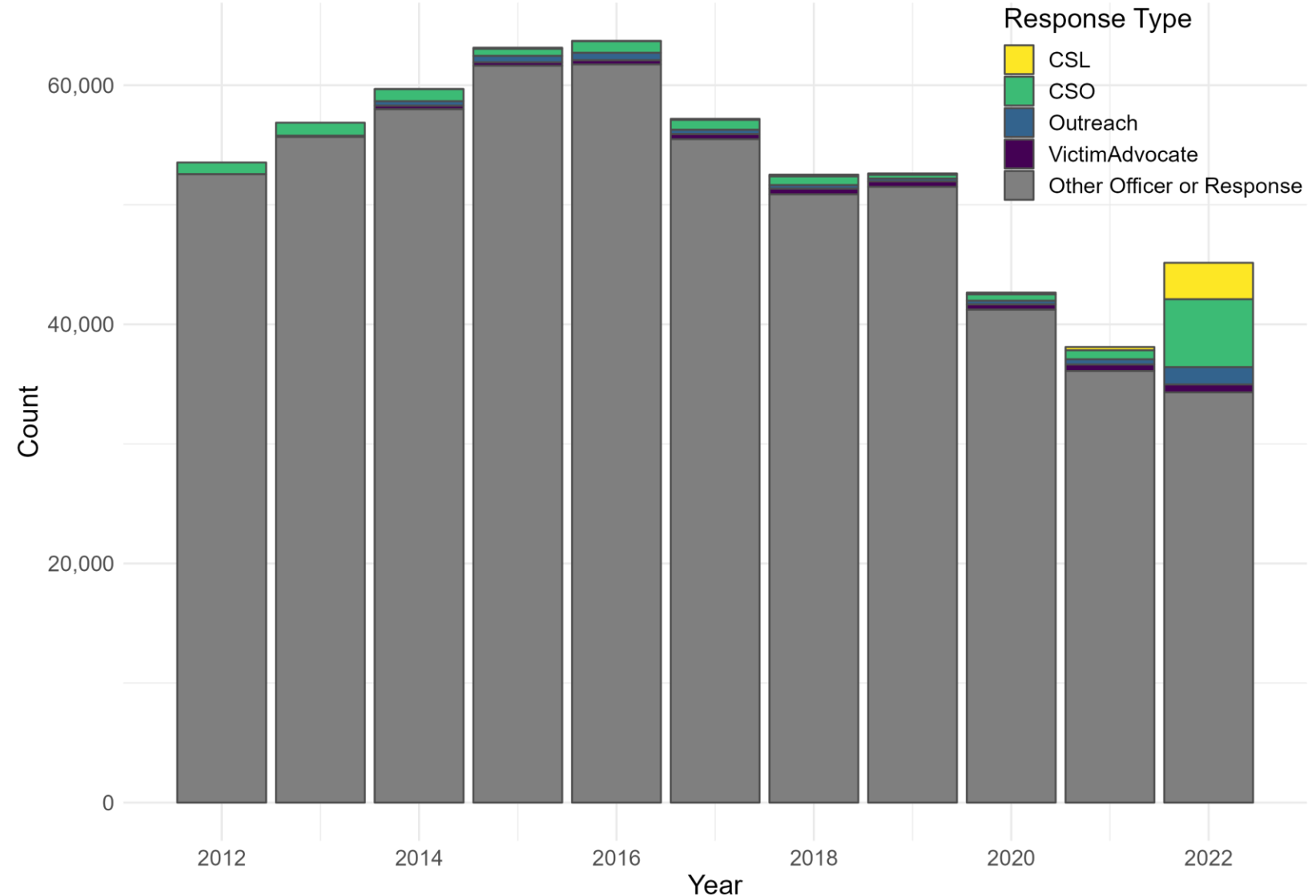


Data through Jul 23, 2023.

Projected based on 53% of past year's incidents occurred at that date.

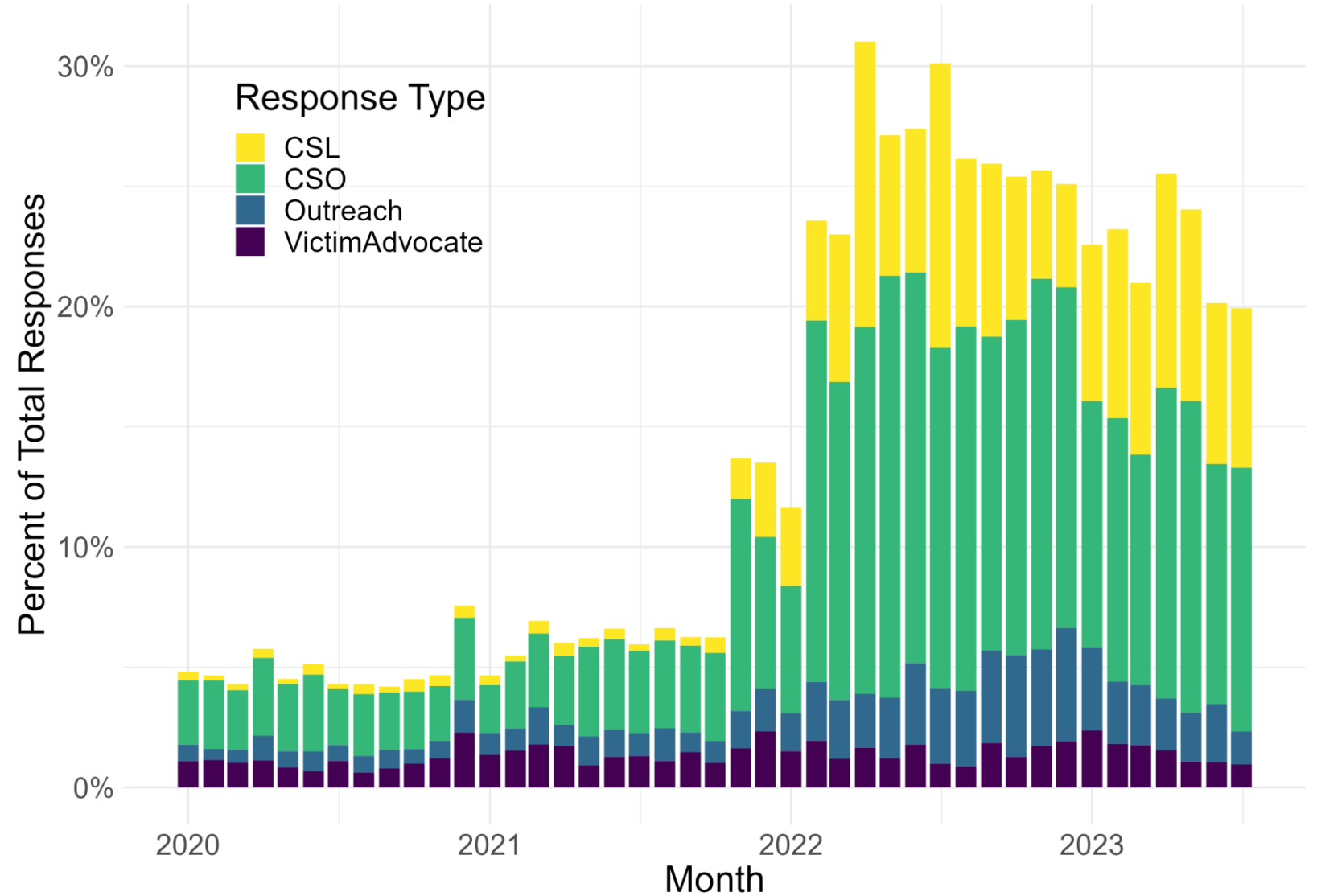
Individual Responses to BPD Incidents

There has been a steep drop in individual sworn officer responses, while CSLs, CSOs and other responders have added to that capacity. More than one BPD personnel often respond to a single incident, including various combinations of responder types.



Response by CAIP personnel, CSOs and Street Outreach

Since early 2022, responders other than sworn officers have accounted for one in every five BPD responses.





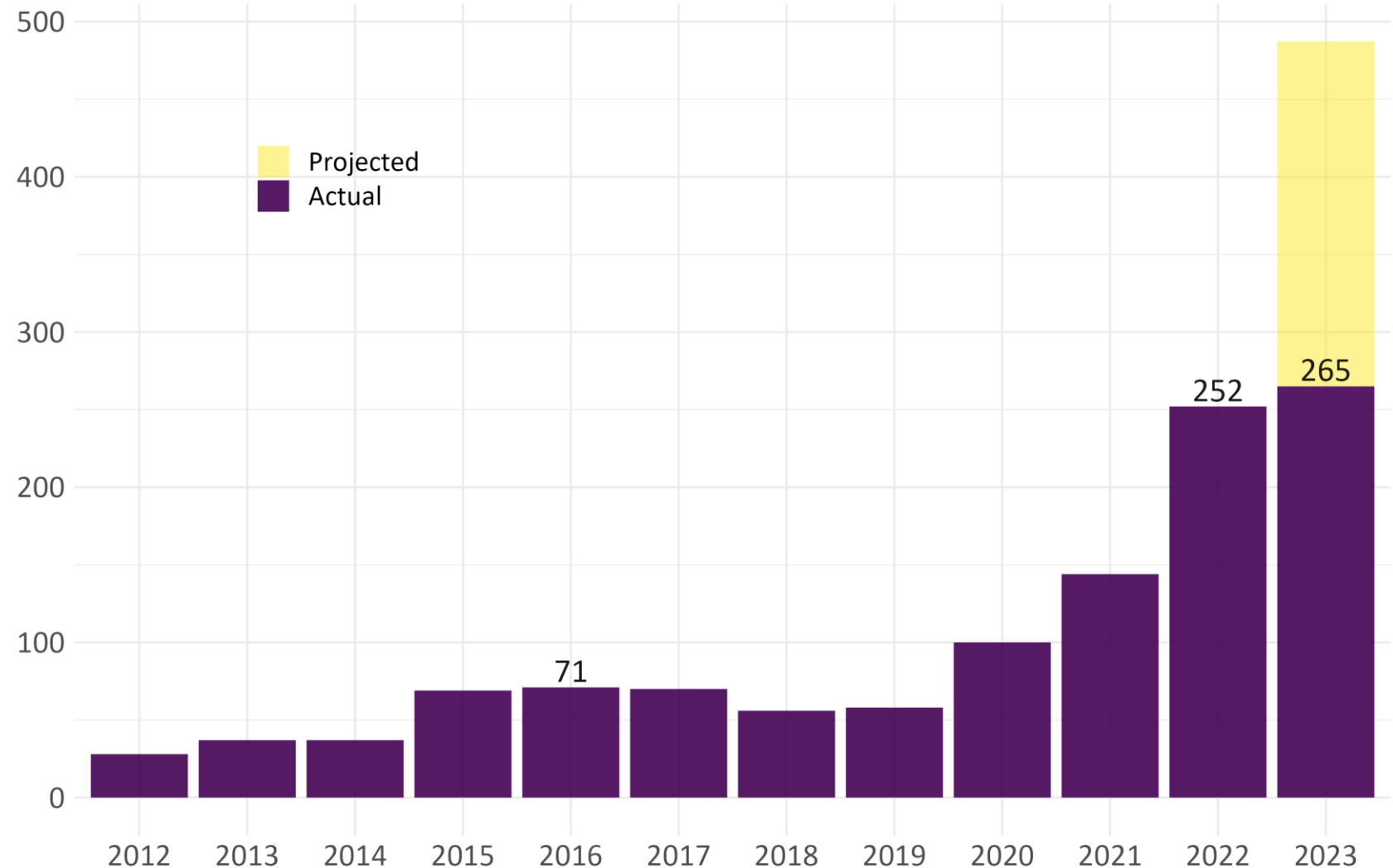
Opioid Overdose Crisis

Overdose Responses by BPD

Burlington Police Department is responding to an accelerating number of overdoses. From 2015-2017, there were **6 OD responses a month**. In 2023 there have been **39 on average each month**.

In 2022, 163 overdose victims with demographics available:

- 62% Male, 38% Female
- 94% White, 5% Black, 0.5% American Indian
- Average age: 37 Years

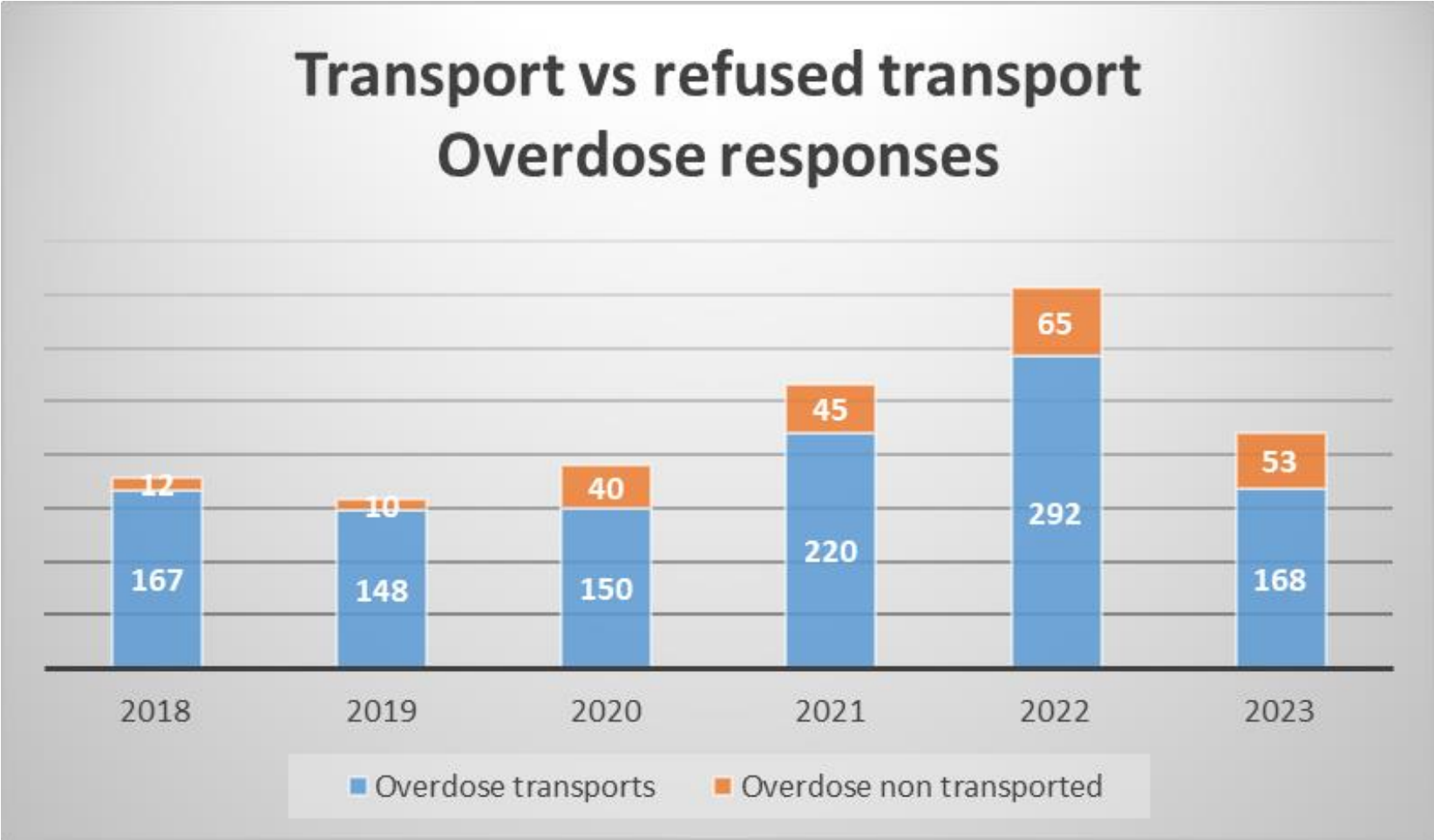


Data through Jul 23, 2023.

Projected based on 54% of past year's incidents occurred at that date.

Overdose Responses by BFD

Burlington Fire Department responds to one third of overdoses in Chittenden County; victims are increasingly refusing transport.



Data through 6/25/2023

Fatal Overdoses

Overdoses fatalities are increasingly common, particularly in Chittenden County.

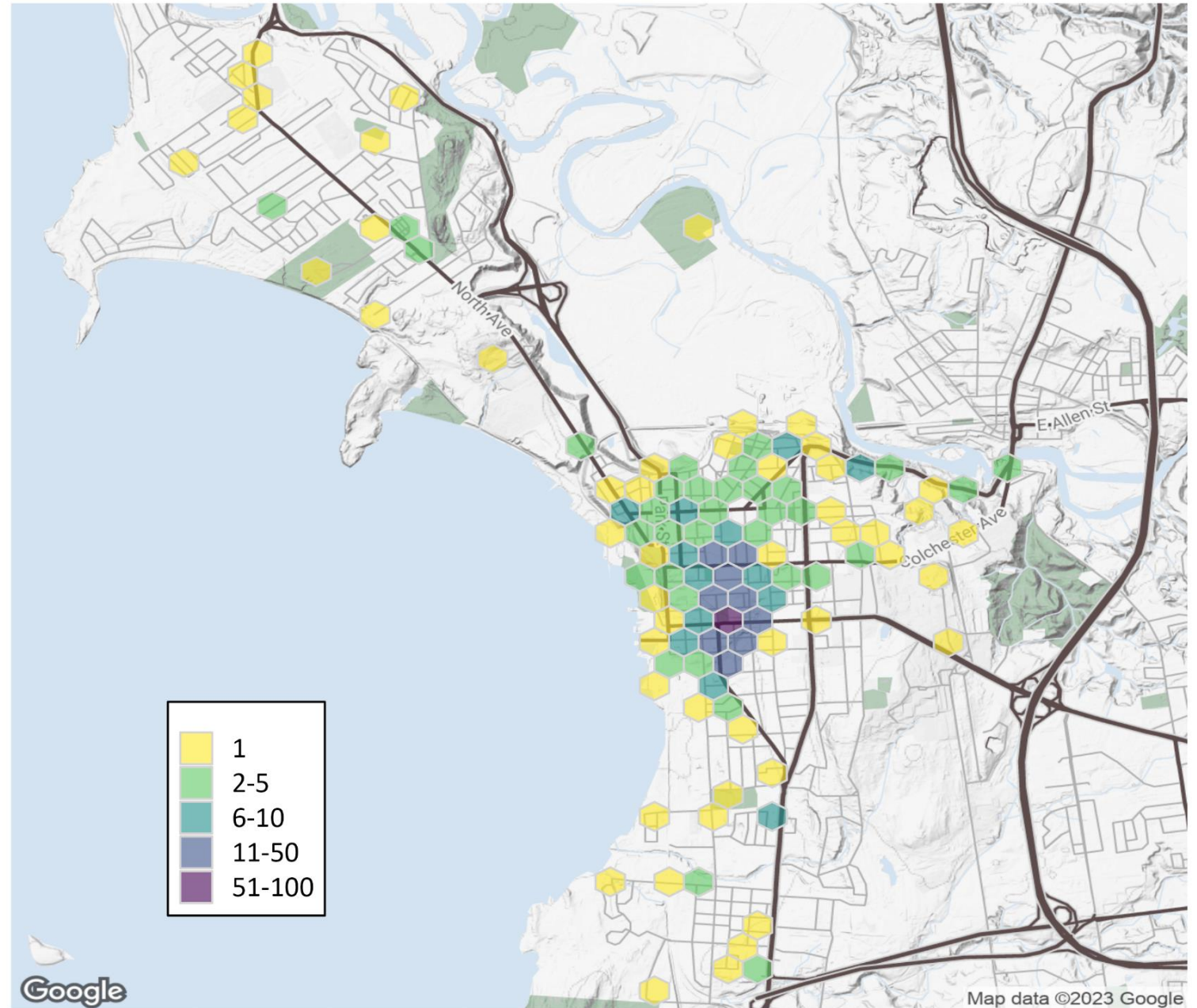
Burlington			
Year	Months	Total	Deaths Per Month
2021	Jan-Sept	15	1.7
2022	Jan-Dec	24	2
2023	Jan-April	9	2.25

Chittenden County			
Year	Months	Total	Deaths Per Month
2021	Jan-Sept	37	4.1
2022	Jan-Dec	55	4.6
2023	Jan-June 6	31	5.9

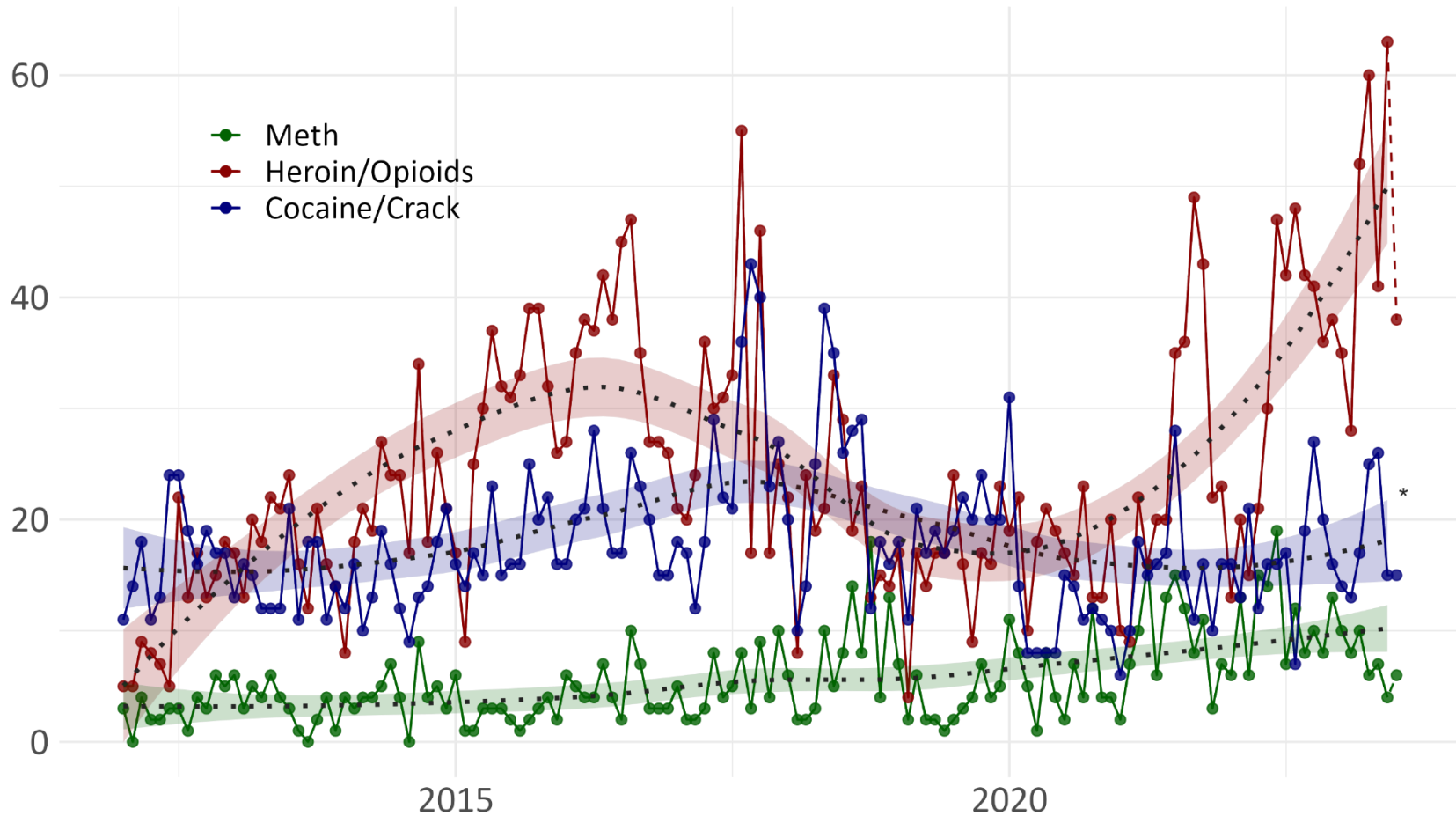
Note: Not all years contain complete data
Data Source: Medical examiner, via State's Attorney

Location: BPD Overdose Responses

Overdose responses happen in every part of the City, and are concentrated downtown.



BPD Incidents Involving Drugs, by Month



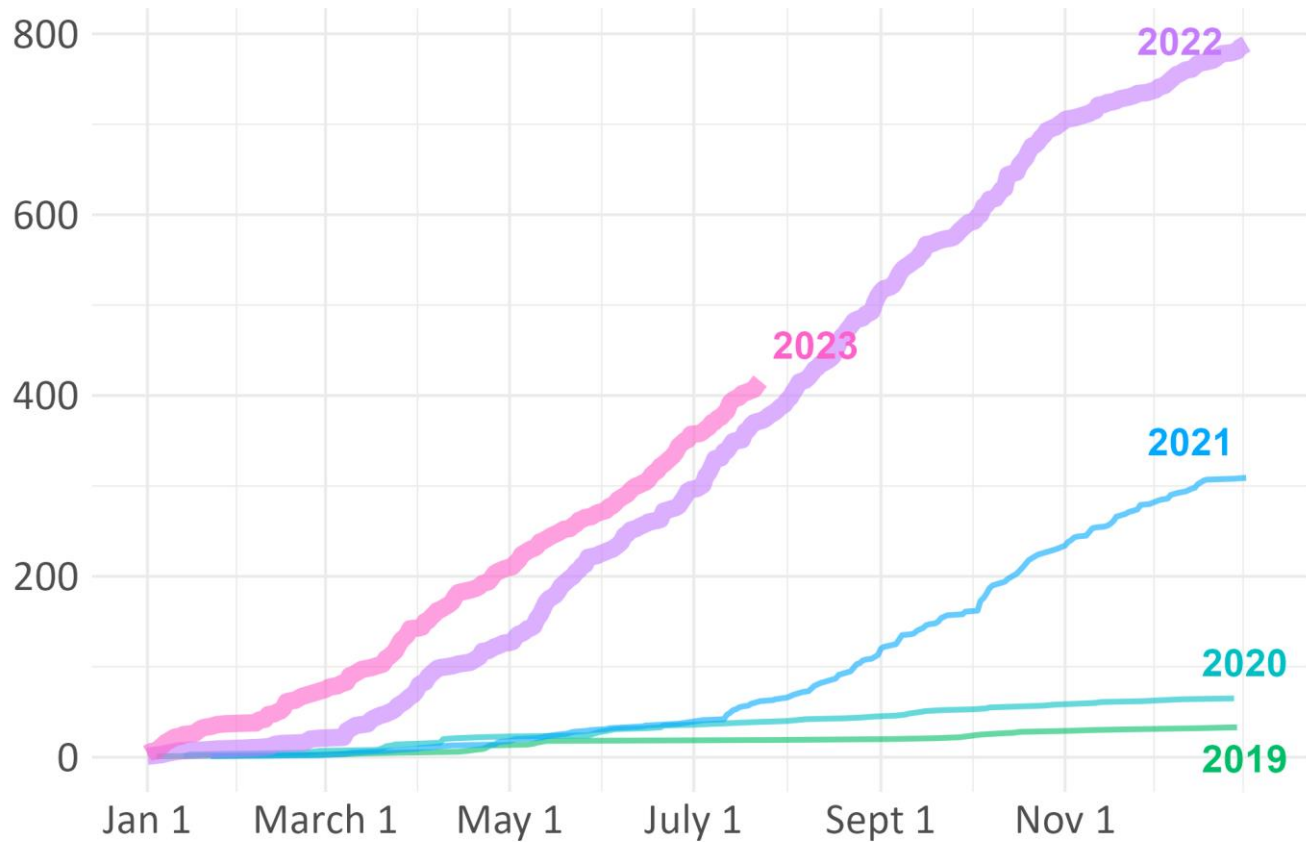
Police incidents involving heroin sharply up after a marked decline, meth rising steadily. April 2023 saw a record number of opioid related police incidents.

Includes all types of incidents marked with drugs involved or a narrative that contained drug keywords.

**Jul 01 to Jul 24*

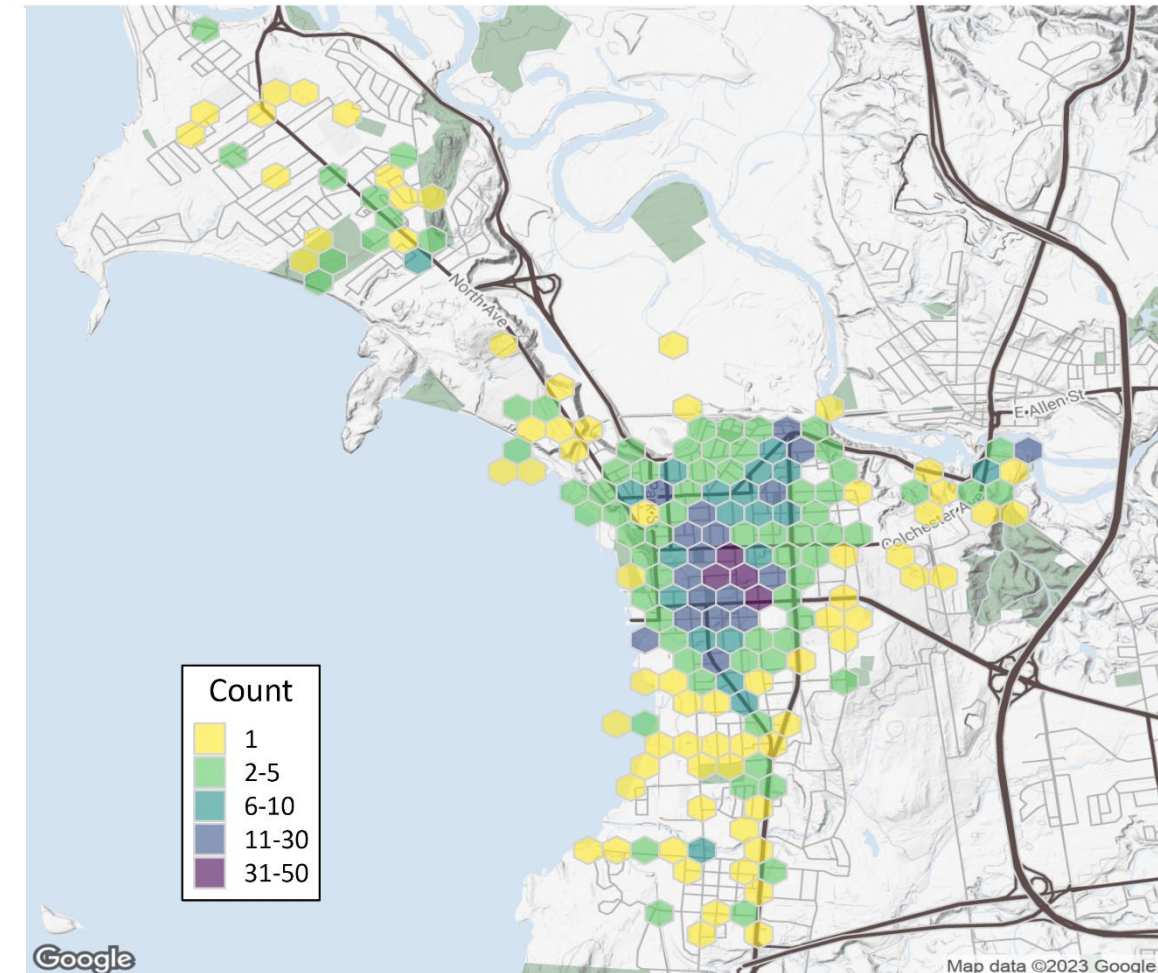
SeeClickFix Reports of Found Needles

Prior to 2021, the City rarely received reports of needles, now it is a regular occurrence.



Data through Jul 23, 2023.

2022 + 2023



Data through Jul 23, 2023.