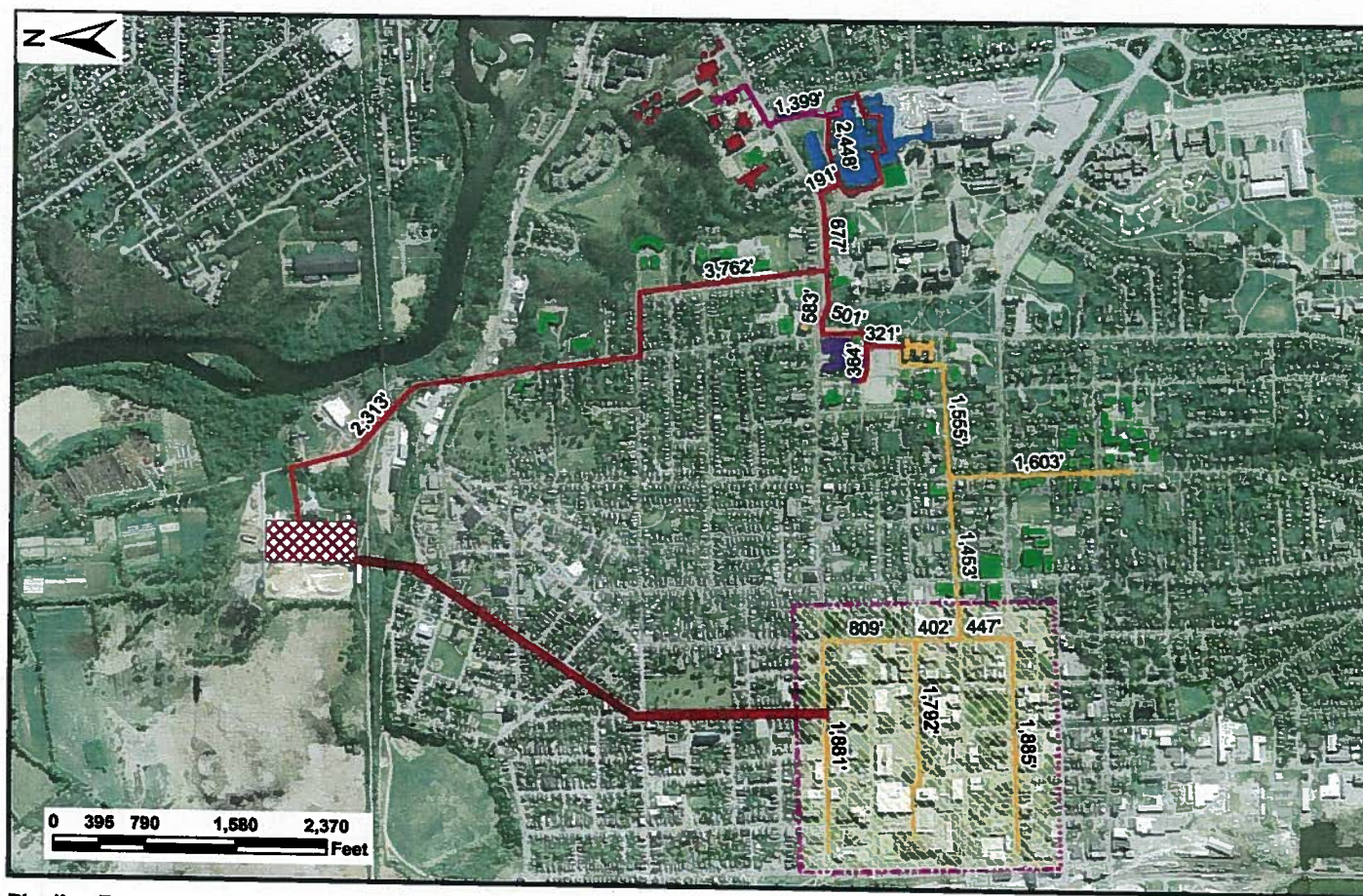




# Community Energy Opportunity



## Pipeline Route Alternates

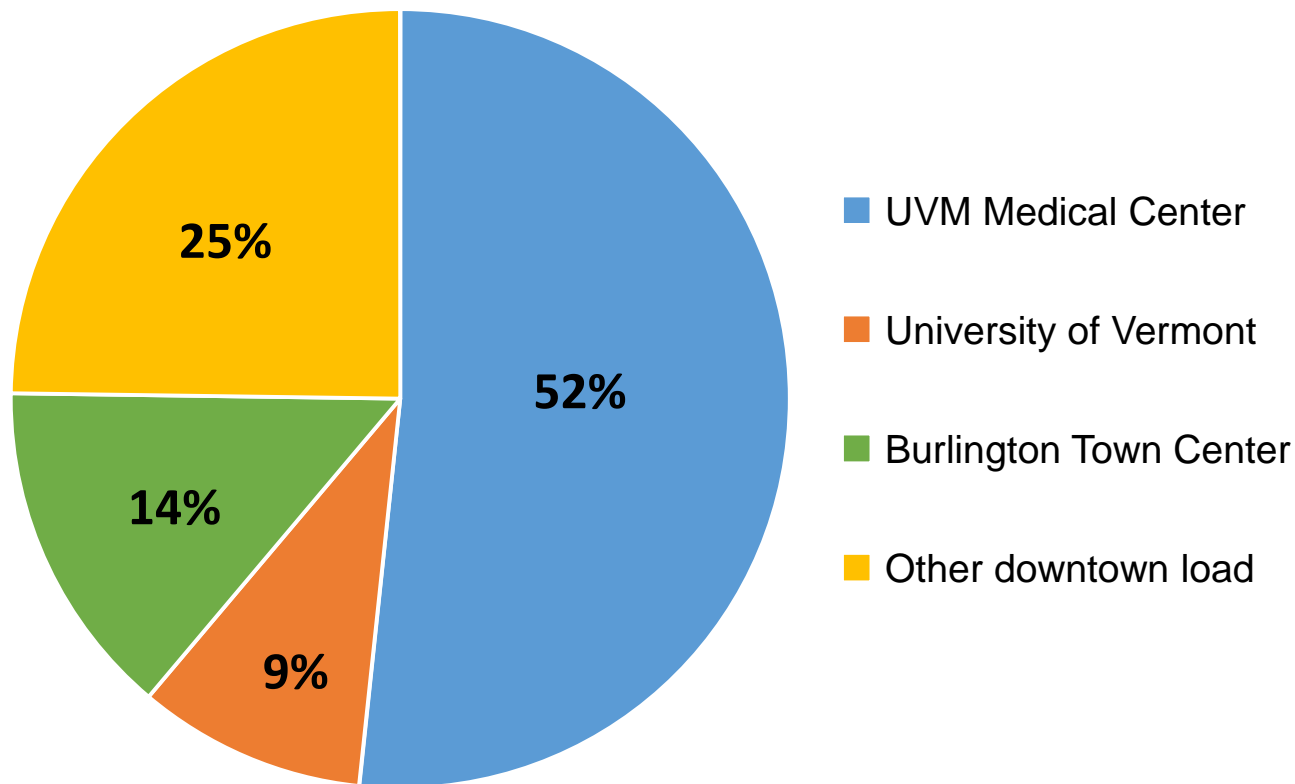
- Base Transmission Line
- Trinity PEX Line
- Burlington Community Connector

## Potential Loads

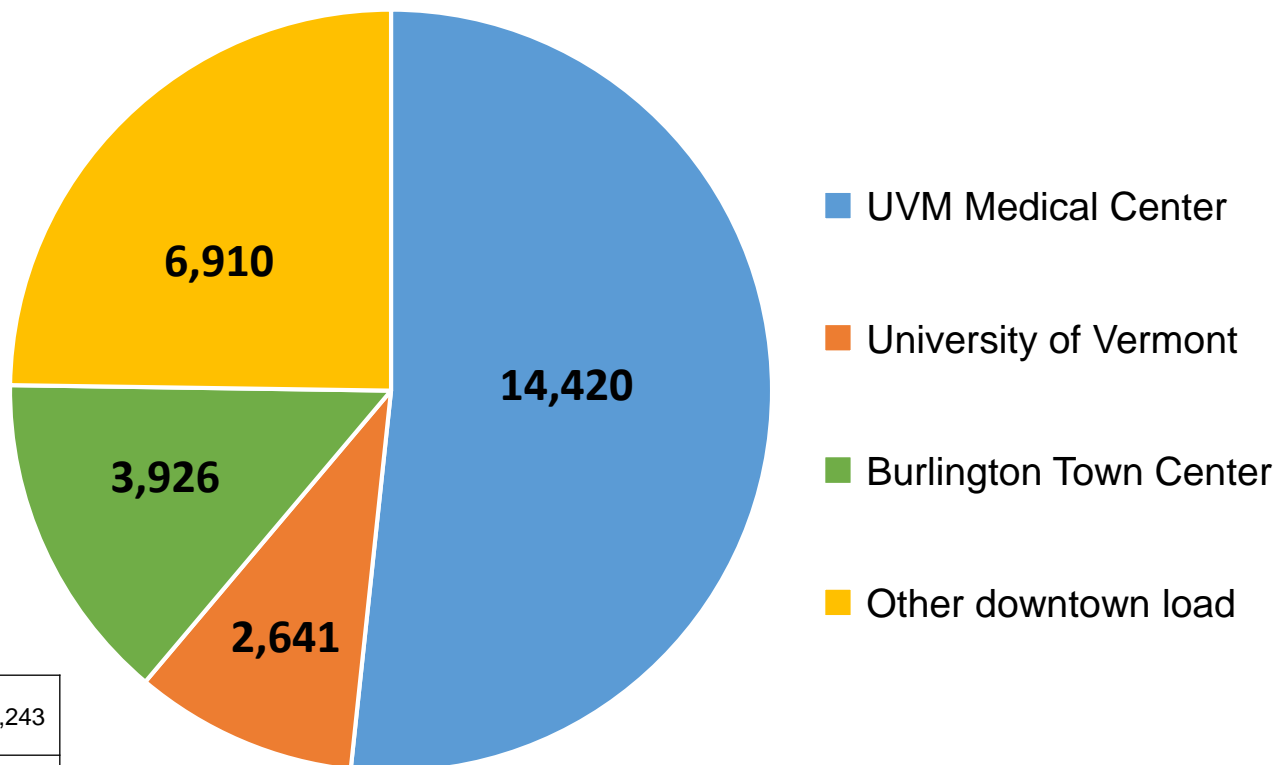
- Potential Load
- 2010 Alternate 1 & 2 Customers
- McNeil Station
- UVM Medical Center - Main
- UVM Medical Center - Prospect
- UVM- Main Campus
- UVM- Trinity Campus

**BURDES DISTRICT ENERGY STUDY**  
**Downtown System Connection**  
**Burlington, Vermont**

## Potential Heating Load (390,000 MMBtu/yr total)



## Carbon Dioxide Emission Reduction Potential (28,000 metric tons/yr total)



### For perspective:

Total Burlington Community emissions from natural gas (1)	117,243
UVM Main Campus emissions from heating & cooling (2)	36,000

(1) 2010 emissions per Burlington Climate Action Plan

(2) 2014 emissions per UVM 2010 Climate Action Plan