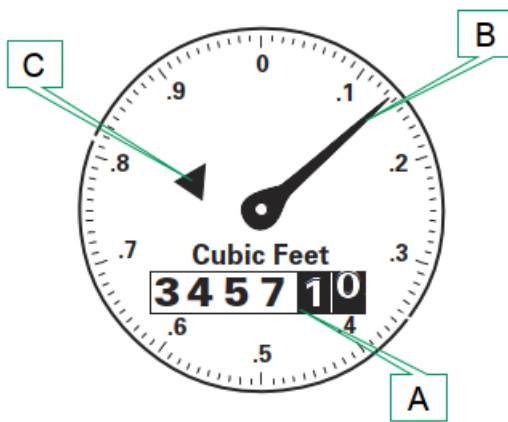
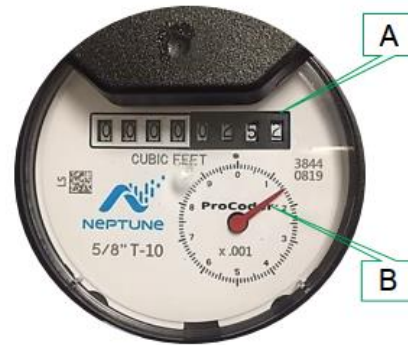


TYPICAL WATER METER REGISTER



PROCODER WATER METER REGISTER



A. Dials

The dials of a water meter register function like the mileage odometer on a car. These numbers indicate the total flow that has passed through the meter. The typical register is sensitive to 1 cubic foot (CF) whereas the ProCoder can measure to one hundredth CF. The register on the left has recorded 345,710 CF and the register on the right has recorded 2.52 CF.

B. Sweep Arm

The register sweep arm is a visual representation of extreme low flows and provides enhanced resolution beyond the available dials. The sweep arm takes the place of the flow indicator on the ProCoder register.

C. Flow Indicator

The flow indicator rotates when water flows through the meter. If the triangle turns when all plumbing fixtures are off then you may have a leak. This should be investigated.