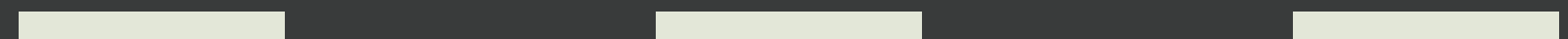


# Ethan Allen Parkway Traffic Calming



# Traffic Calming Roadmap

1

**2022**  
Problem Identified:  
Neighborhood Request

2

**2023**  
Traffic Calming Manual  
Evaluation:

- Data Collection
- Interdepartmental  
Coordination
- Concept Designs

3

**Tonight!**  
Neighborhood Input:

- Public Meeting

4

**2024**  
Design Development:

- Construction Plans
- Secure Funding
  - VTrans Small Scale  
Construction  
Grant

5

**2025**  
Anticipated construction

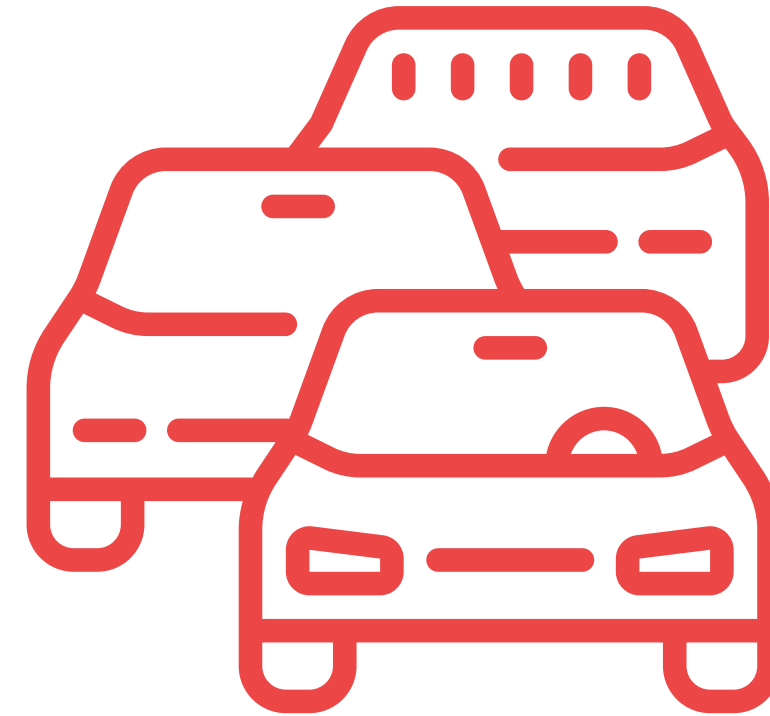
6

**2026**  
Follow Up:

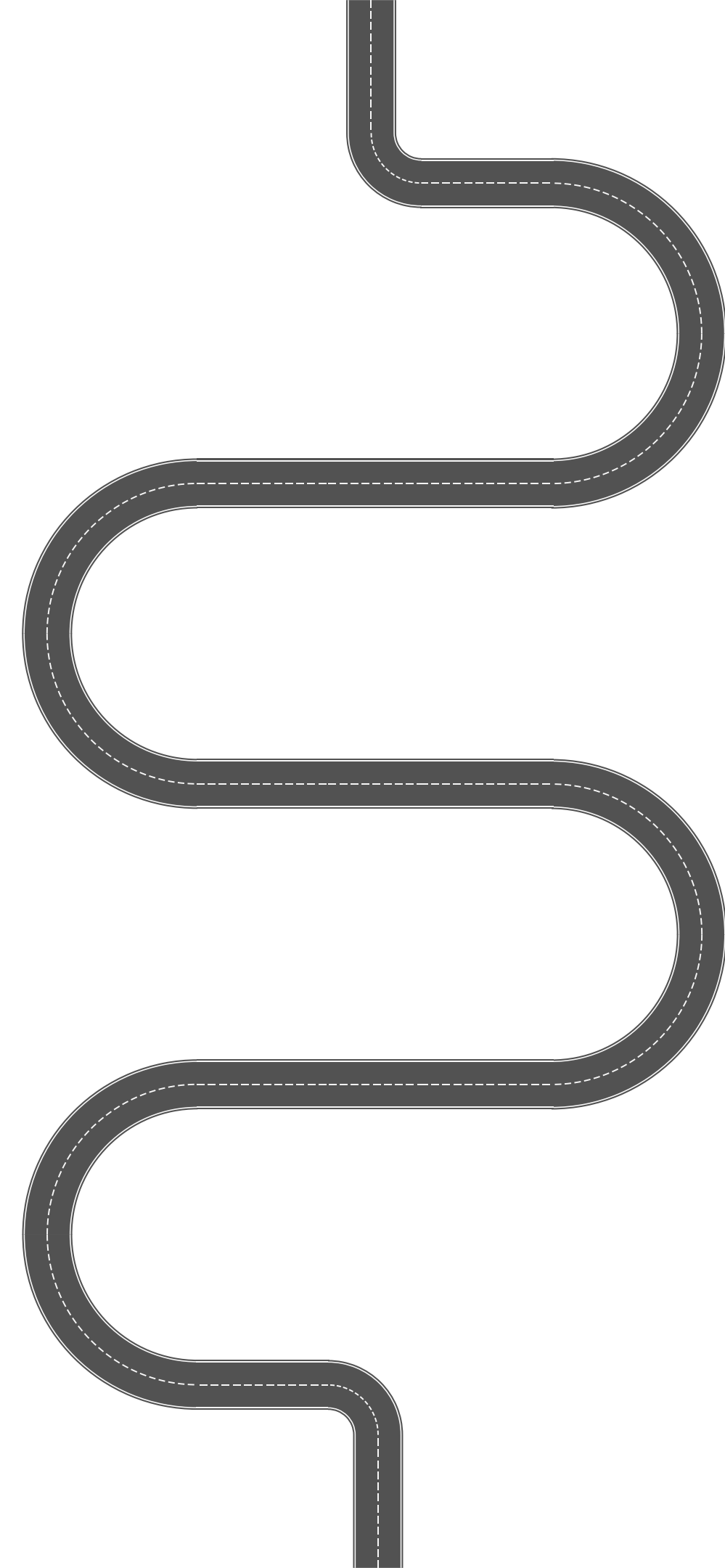
- Post construction  
data collection

# Data Collection

Date Collected:	7/7/23 - 7/13/23
85th Percentile Speed:	37 mph
Average Daily Traffic:	2424 vpd
Heavy Trucks:	0.2%
Five-year Bike/Ped Crash History:	2
Five- year Injury Crash:	4



**This data qualifies Ethan Allen Parkway under the Traffic Calming Program.**



# Program Goals



- **Reduce speeds proximate to frequent and vulnerable pedestrian use**
  - CP Smith Elementary
  - Ethan Allen Park
- **Improve visibility at high conflict zones**
  - Mid block pedestrian crossings
  - Side-street entrances

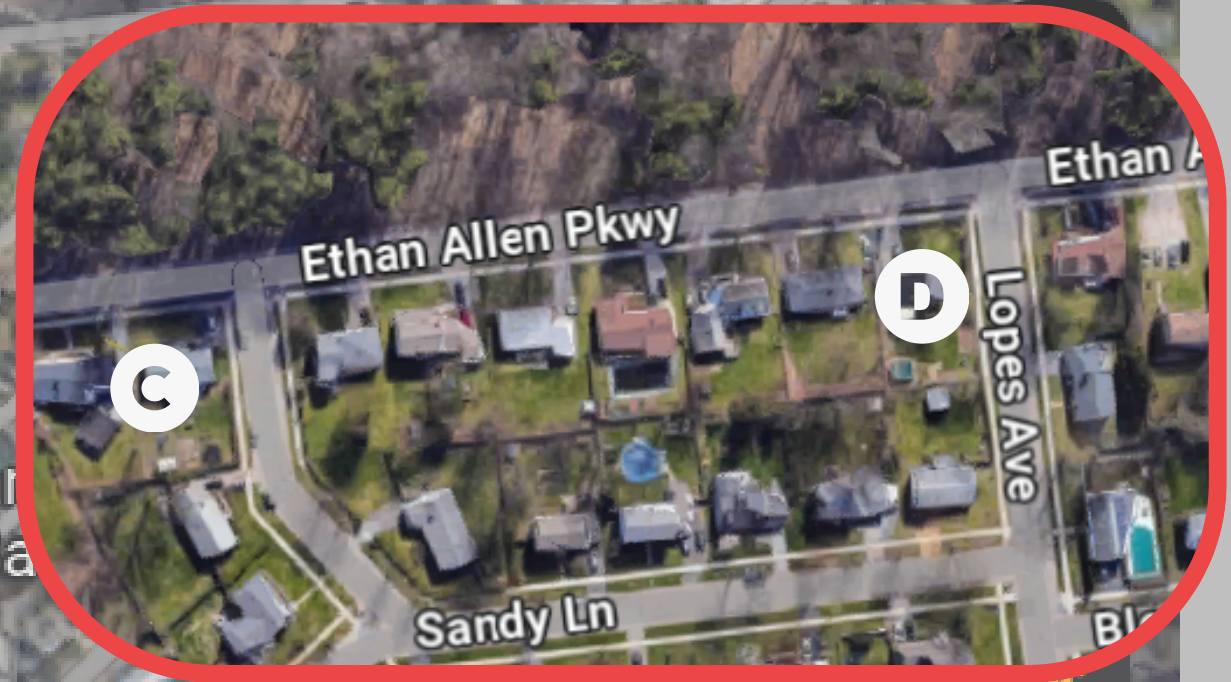
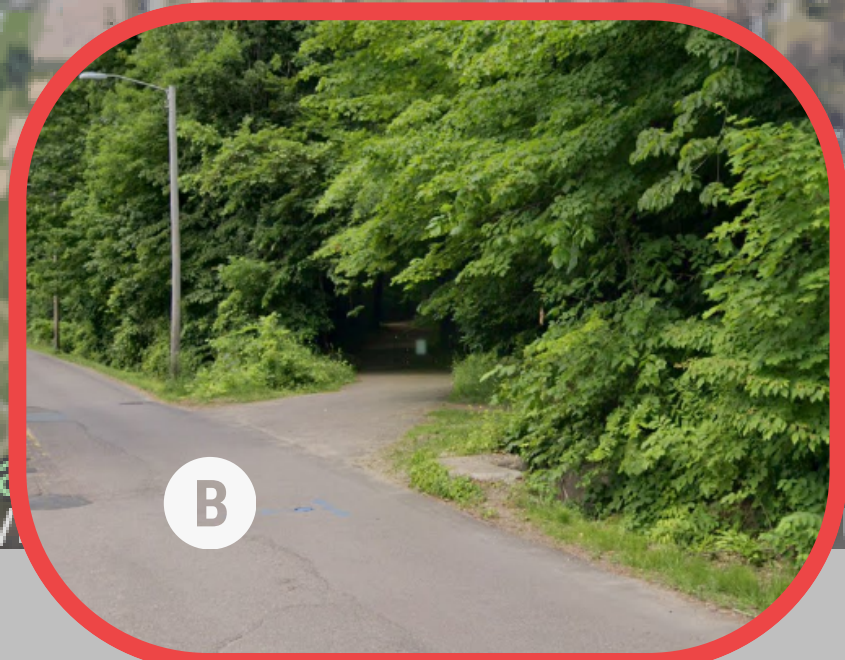
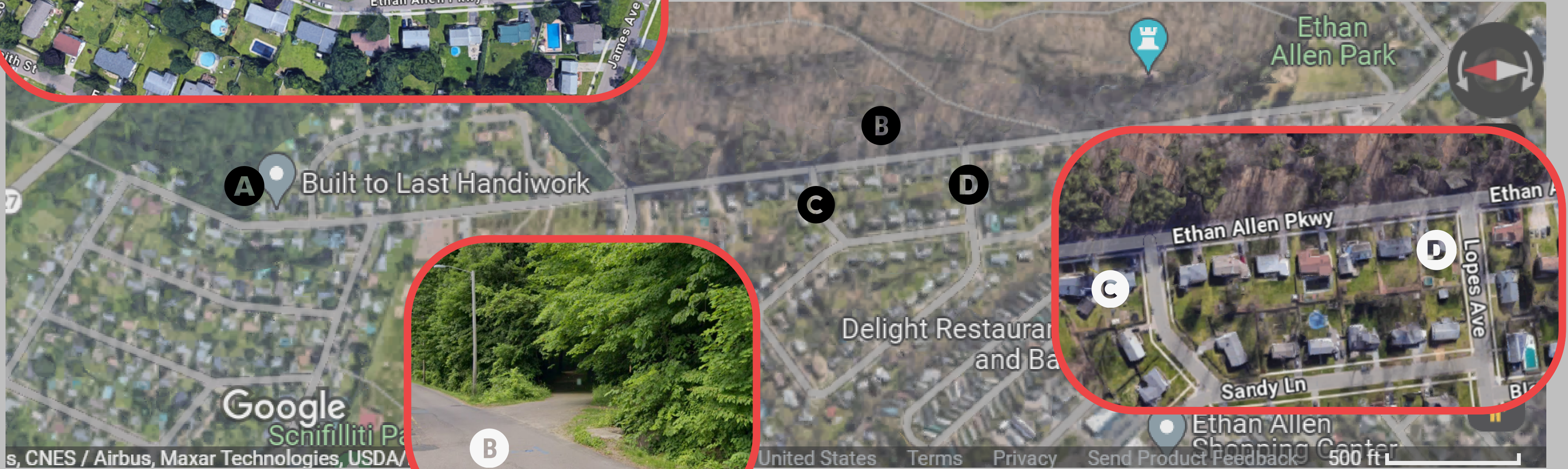


# Proposed Updates

## SIGHT LINE IMPROVEMENTS

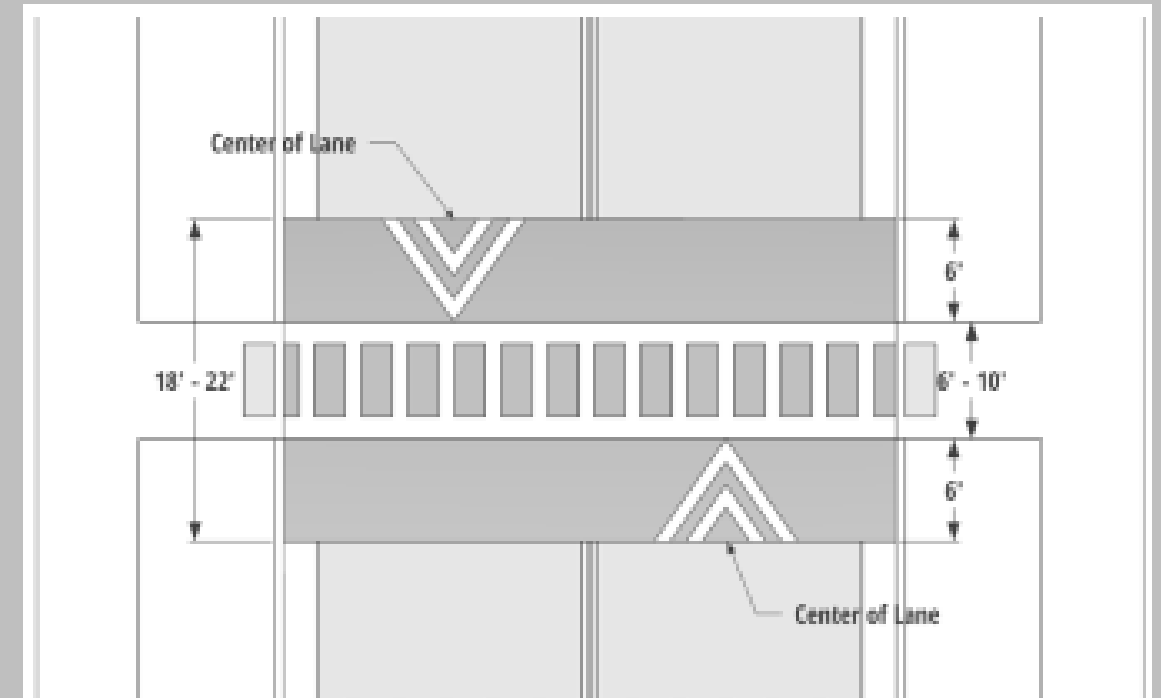


- Trim vegetation at all park entrances **B**
- Parking setbacks on side-streets **C** **D**
- Improve sight distance at the curve **A**

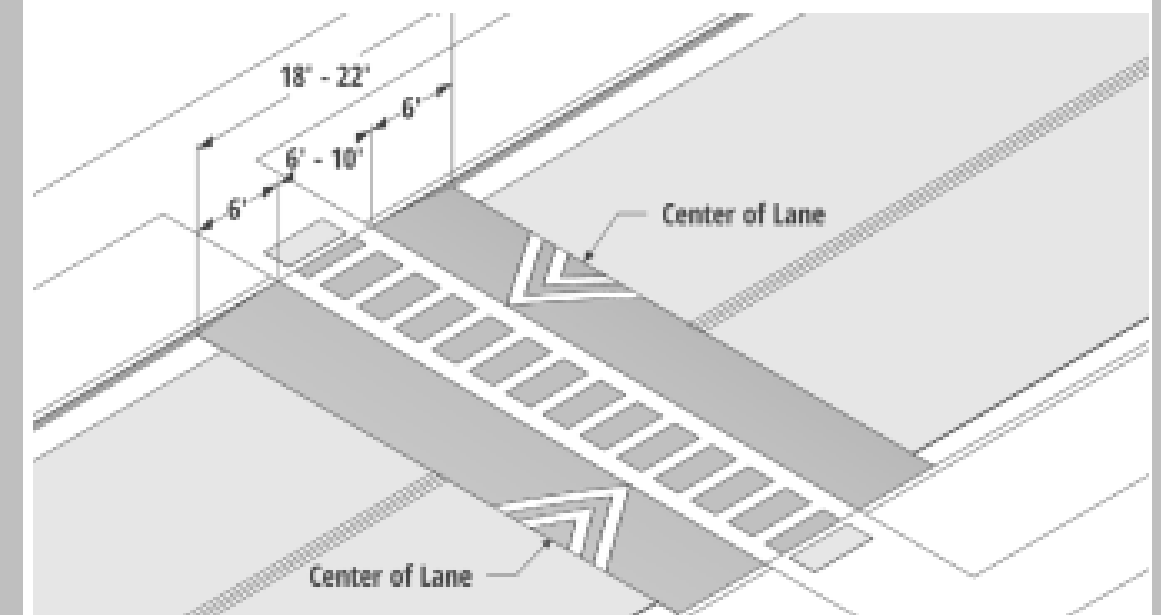


# Proposed Updates

## RAISED CROSSWALKS

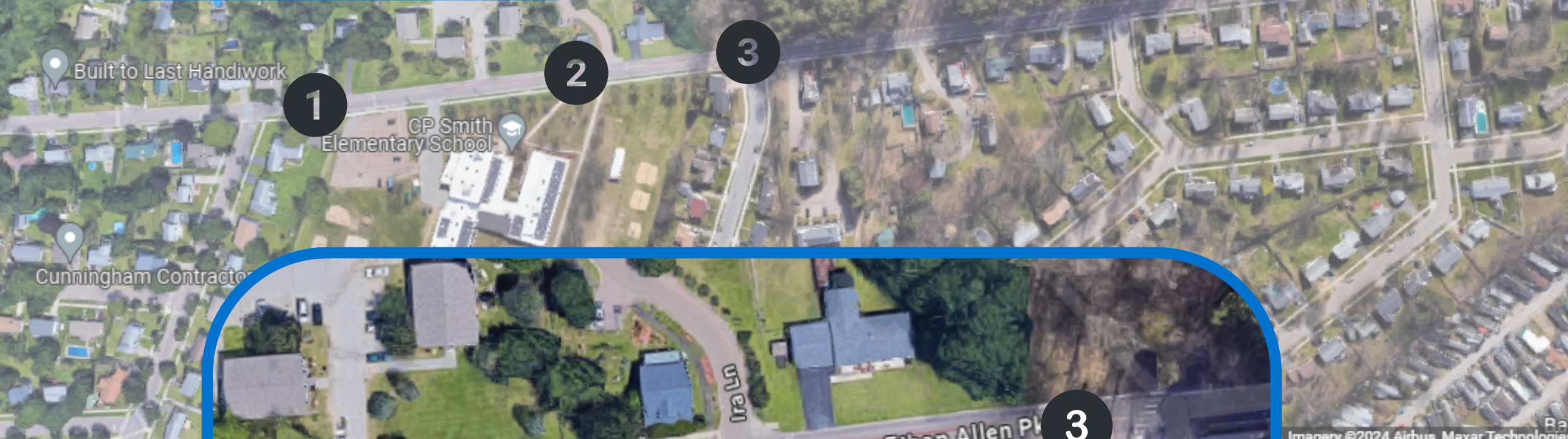


Plan View Detail



Oblique Angle Detail

# Raised Crosswalk Locations



- 1 Near James Ave intersection
- 2 Ira Ln crosswalk
- 3 Farrington Pkwy crosswalk
- 4 Crosswalk to the Park

# Proposed Updates

## RRFB





# Raised Crossings with RRFB



- 2 Ira Ln crosswalk
- 4 Crosswalk to the Park

**What do you think?**



**Contact Info:**

**DORA BEAN**

[dbean@burlingtonvt.gov](mailto:dbean@burlingtonvt.gov)

802-829-6046