

# East Ave Traffic Calming

December 14, 2022 | Ward 1 NPA Meeting

Julia Ursaki, PE and Laura Wheelock, PE

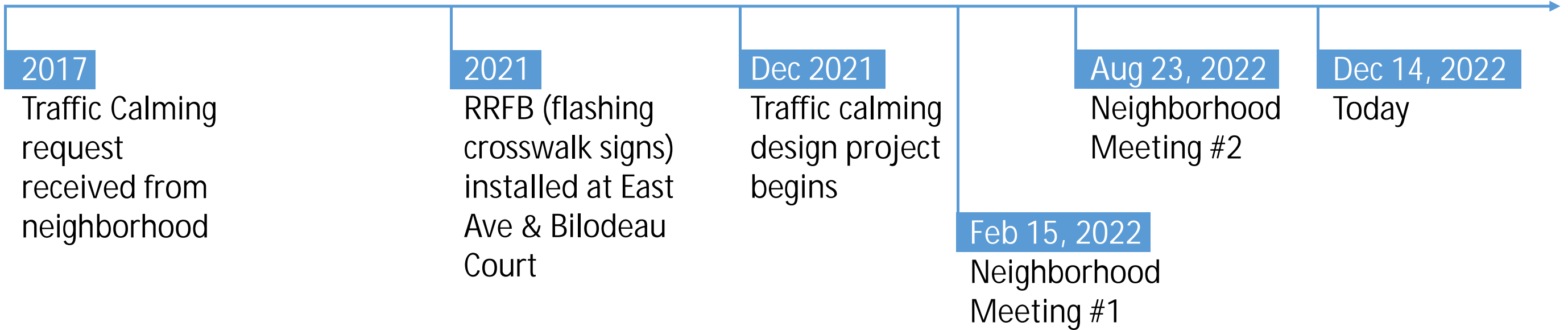


# Scope of this Project

- Design and evaluate traffic calming features along East Ave



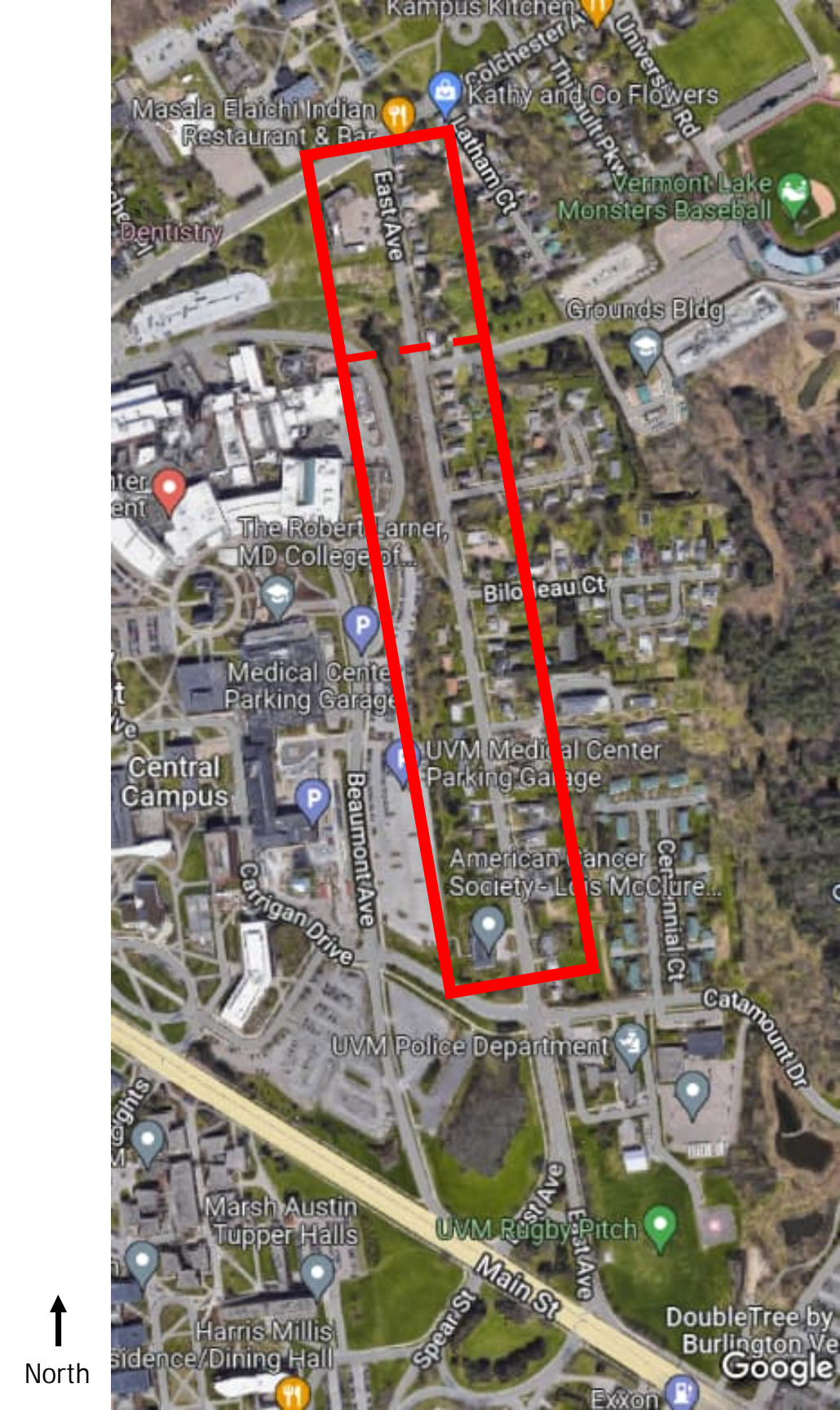
# Project History





# Project Area

- Carrigan Drive – University Road
- Originally included northern block of East Ave, removed due to concerns over parking loss



# Traffic Calming Features Median/Chicanes

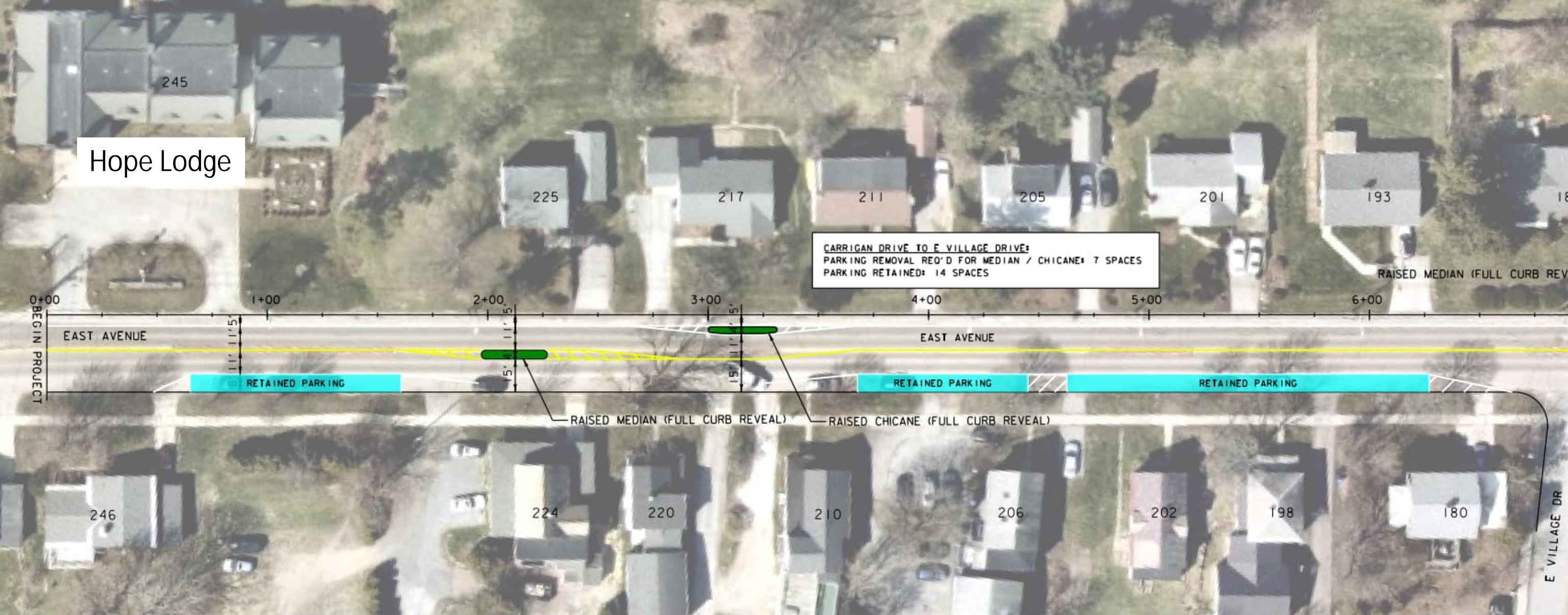




# Traffic Calming Features Raised Crosswalks







Hope Lodge

CARRIGAN DRIVE TO E VILLAGE DRIVE:  
 PARKING REMOVAL REQ'D FOR MEDIAN / CHICANE: 7 SPACES  
 PARKING RETAINED: 14 SPACES

RAISED MEDIAN (FULL CURB REVEAL)

BEGIN PROJECT

EAST AVENUE

RETAINED PARKING

RETAINED PARKING

RETAINED PARKING

RAISED MEDIAN (FULL CURB REVEAL)

RAISED CHICANE (FULL CURB REVEAL)

E VILLAGE DR

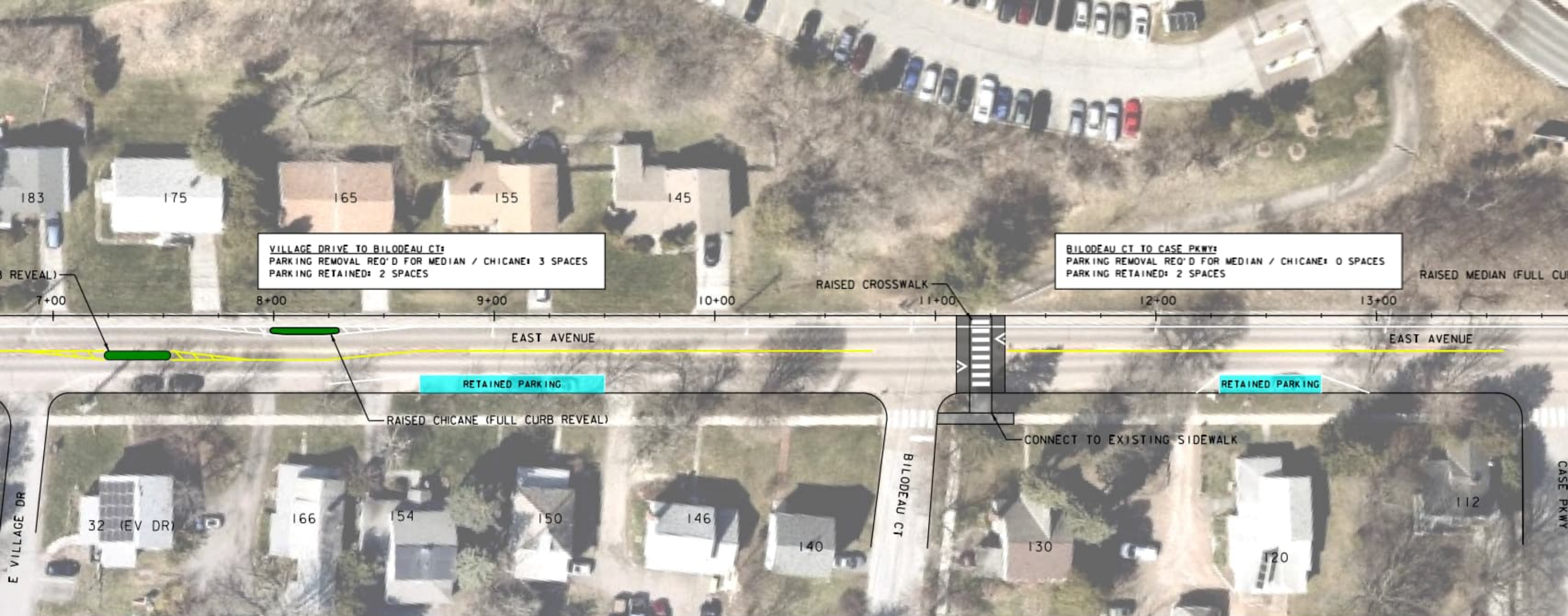


# Carrigan Drive to East Village Drive

- 1 median/chicane
- Remove 7 parking spaces; retain 14







## East Village Drive to Bilodeau Court

- 1 median/chicane
- Remove 3 parking spaces; retain 2

## Bilodeau Court to Case Parkway

- 1 raised crosswalk
- Retain 2 parking spaces







## Case Parkway to University Road

- 1 median/chicane
- 1 raised crosswalk
- Remove 3 parking spaces; retain 4





# Next Steps

Spring 2023

Final design and construction documents

2023 or 2024 Construction Season (April-October)

Anticipated construction





# Contact

Julia Ursaki, PE

[jursaki@burlingtonvt.gov](mailto:jursaki@burlingtonvt.gov)

802-809-1355

