

Streetscapes - HOW DO YOU WANT TO MOVE?

Below are four examples of streetscapes that could be developed in the Innovation District, each with varying amounts of pedestrian, cyclist, and vehicle interaction. What type do you prefer?

Car Free

Stickers go here!

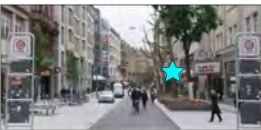






Have other thoughts? Tell us here with a Post-It Note

Shared Streets

Stickers go here!

Have other thoughts? Tell us here with a Post-It Note

Complete Streets

Stickers go here!








Have other thoughts? Tell us here with a Post-It Note

Car-Priority Streets

Stickers go here!

Have other thoughts? Tell us here with a Post-It Note

What do you want the character of public spaces in the Innovation District to be? Below are four examples - use your stickers to decide what you want public spaces to prioritize!

other thoughts? Tell us here with a Post-It Note

Champlain Parkway Public Realm

Below are examples of the different ways that Champlain Parkway can coincide with the Innovation District. How do you imagine the edges along the parkway to look?

Green



Stickers go here!



Green, green, green! How can the better, more urban housing businesses could be made to work with the future in mind and the needs of the community?

"Green" urban housing for the city, due to the close proximity of the highway.

Urban for water catchment and water retention.

Will this project encourage, excite, or have the effect on potential effects of the Champlain Parkway?



other thoughts? Tell us here with a Post-It Note

Urban, Fine Grain Blocks



Stickers go here!



Relative to most urban centers, this is a tiny site - and hard to stuff as much as that small acreage as possible. This is not Brooklyn or Boston.

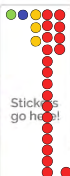
The green space that I think is most important here is the one we get when having great buildings that are not just green space, but also green space.

Building has an increased amount of green space in development. Encourage new building-year building and development, not just green space in development.



other thoughts? Tell us here with a Post-It Note

Urban, limited access parkway



Stickers go here!



Have other thoughts? Tell us here with a Post-It Note

GROUND FLOOR USES - WHERE AND HOW MUCH?

Below are four unique approaches to ground floor uses in urban districts. Use your stickers to tell us which arrangement you like best at each location. Use your Post-It notes to tell us what you think about the South End Innovation District.

Unlimited Commercial

Stickers go here!





Ground floor commercial space allows for a lot of flexibility in how the space is used. It can be used for a variety of commercial uses, including retail, office, and service. It also allows for a lot of flexibility in how the space is used, including for a variety of commercial uses, including retail, office, and service.

Have other thoughts? Tell us here with a Post-It Note

Limited Commercial

Stickers go here!





Ground floor commercial space allows for a lot of flexibility in how the space is used. It can be used for a variety of commercial uses, including retail, office, and service. It also allows for a lot of flexibility in how the space is used, including for a variety of commercial uses, including retail, office, and service.

Have other thoughts? Tell us here with a Post-It Note

Limited Commercial + Unlimited Community

Stickers go here!





Ground floor commercial space allows for a lot of flexibility in how the space is used. It can be used for a variety of commercial uses, including retail, office, and service. It also allows for a lot of flexibility in how the space is used, including for a variety of commercial uses, including retail, office, and service.

Have other thoughts? Tell us here with a Post-It Note

Residential Only

Stickers go here!





Ground floor commercial space allows for a lot of flexibility in how the space is used. It can be used for a variety of commercial uses, including retail, office, and service. It also allows for a lot of flexibility in how the space is used, including for a variety of commercial uses, including retail, office, and service.

Have other thoughts? Tell us here with a Post-It Note

HOUSING - WHAT CAN YOU EXPECT?

Below are examples of multi-family building types that are allowed in the Innovation District. Use your stickers to think about which buildings you'd build if it were up to you:

Title of work:
Description:

...affirming ...
...affirming ...

Rowhouse/Townhouse



other thoughts? Tell us here with a Post-it Note

Triplex/Quad



Have other thoughts? Tell us here with a Post-It Note

Mid-Size Apt. Building



Would include
Bridges, Inc. and

includes options for
size of building
size

Unfortunately, however, none of the

© 2005 Blackwell Publishing Ltd

outside purchasers and
not access with:

Note

Large Apartment Building
(full-block)



This city needs housing! Increased supply will help keep housing affordable for all income levels. It will strengthen the downtown

Maximize possible development diversity, particularly for housing opportunities. Encourage

Let's build an email list

I like the largest scale apartment options for some of the space. If, and ~~unless~~, there is commercial space for

consider parking for why housing that is added makes no sense. Not working, any rule housing needs to be the result of working more. Otherwise, we're just being

parking garage 1 stories, with housing all the way around it, not

Figure 1. The large apartments are good as long as they are modern and have

architecture should reflect history of the neighborhood.

Based on wanting the
• it starts, it would be

Trade parking could
access large building,
but not across town.

USE TYPES

These two boards show eight groups of uses that could be allowed in the Innovation District. Use your stickers to tell us which groups you think are most important to have in the District!

Food and Drink



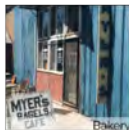
Stickers go here!



Cafe/Coffee Shop



Restaurant



Bakery



Bar/Tavern

Stickers go here!

I want to see everything on this board included in the district. Top choice food and drink, but not only that.

Have other thoughts? Tell us here with a Post-It Note

Retail



Stickers go here!



General Retail



Bank/Credit Union



Bike Shop



Maker/Artist Market

Stickers go here!

Stickers go here!

Have other thoughts? Tell us here with a Post-It Note

Provision housing and job creation.

Personal Service



Stickers go here!



Hair Salon



Dry Cleaner/Laundry



Nail Salon



Pet Shop

Stickers go here!

Stickers go here!

Have other thoughts? Tell us here with a Post-It Note

Stickers go here!

Stickers go here!

Care Work



Stickers go here!



Childcare



Dentist



Health Ctr./Dr. Office



Veterinarian

Stickers go here!

Stickers go here!

Have other thoughts? Tell us here with a Post-It Note

Stickers go here!

Stickers go here!

USE TYPES

These two boards show eight groups of uses that could be allowed in the Innovation District. Use your stickers to tell us which groups you think are most important to have in the District!

Art and Making

Stickers go here!










other thoughts? Tell us here with a Post-It Note

Agriculture





Stickers go here!

other thoughts? Tell us here with a Post-It Note

Community

Stickers go here!

Have other thoughts? Tell us here

Entertainment/Hospitality

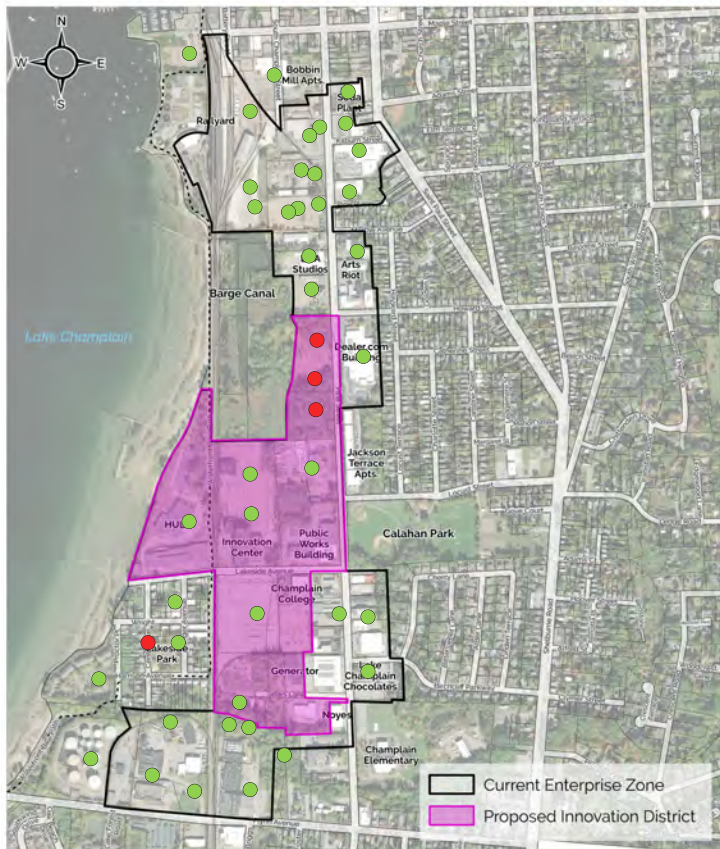
Stickers go here!






other thoughts? Tell us here with a Post-It Note

Build Your Own Innovation District



0 0.05 0.1 0.2 miles