



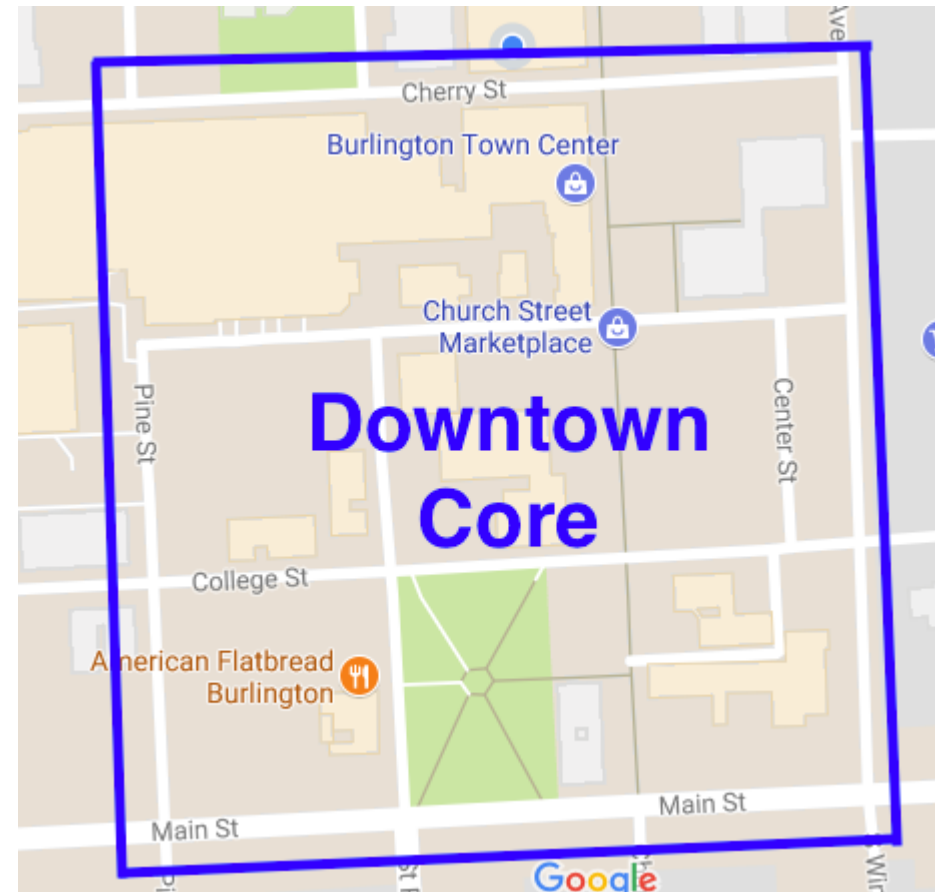
On-Street Utilization Data Review
DPW Commission
11/15/17



History

Fall of 2014 – last major parking policy change:

- 300+ New Smart Meters in “Downtown Core”
- \$1.50/Hr.
- No time limits
- Extended enforcement to 10pm
- Goal:
 - Open up parking spaces
 - Ensure turnover in prime parking spots downtown
 - 85% utilization as benchmark





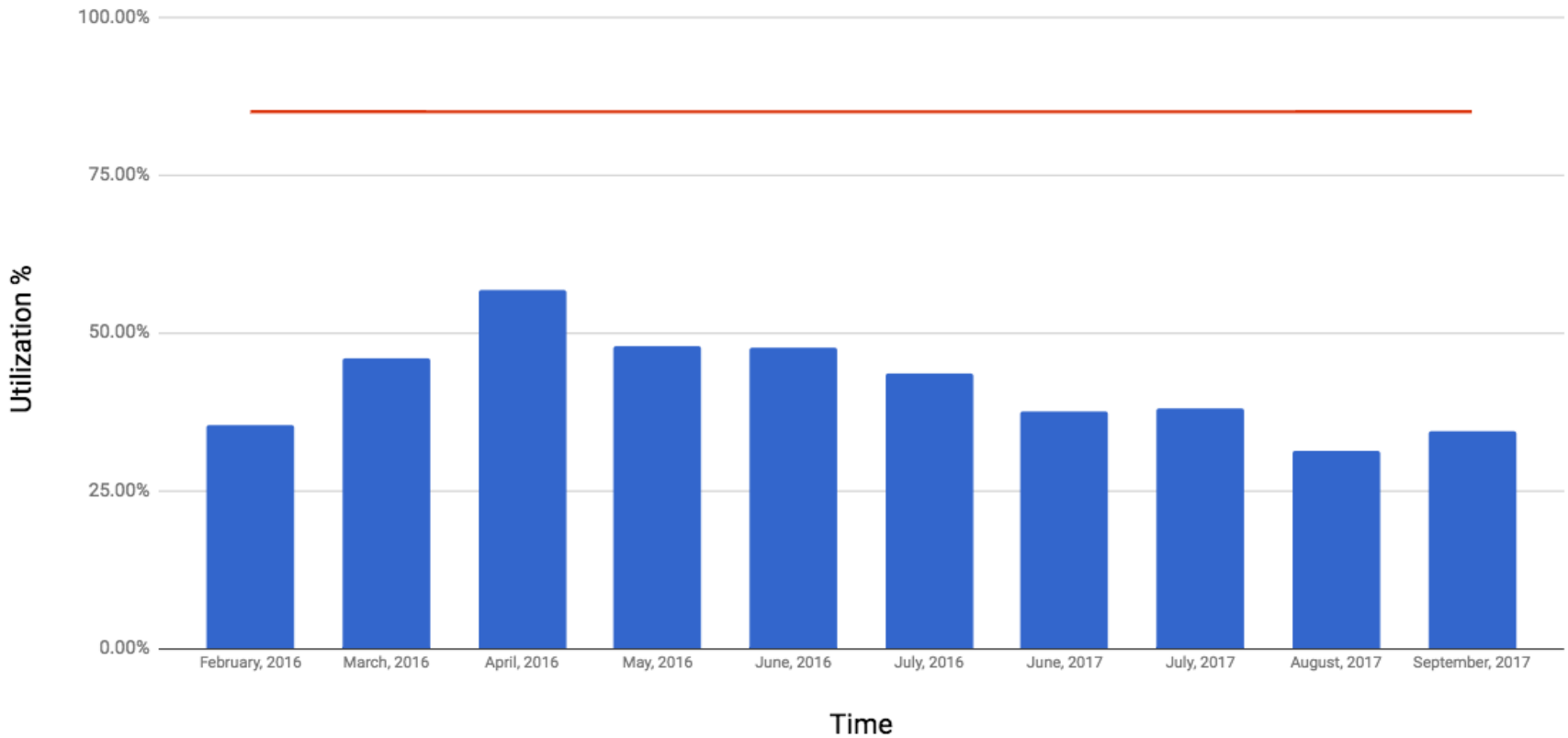
Data-Driven Approach

- [DPTM Plan](#) recommends 85% occupancy as goal
- Collect data on-street
 - Second Thursday of Month
 - 8am, 12-1pm, 6-7:30pm, 8-9pm
 - Second Saturday of Month
 - 8am, 12-1pm, 7-7:30pm, 8-9pm
 - Second Sunday of Month
 - 1pm & 5pm
- Months data was collected:
 - February-September 2016
 - June-September 2017



Thursday, 8am – Downtown Core

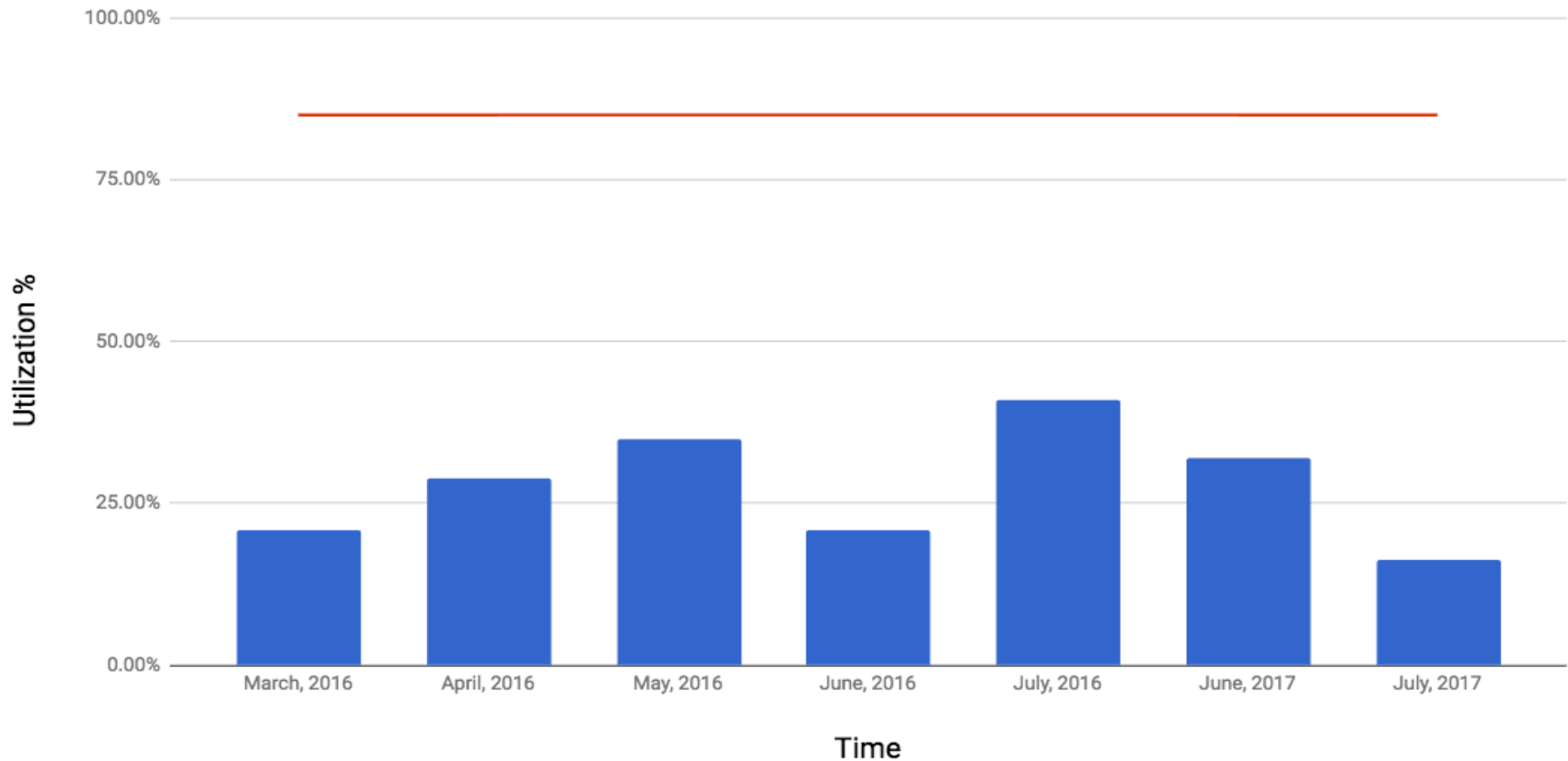
Thursday, 8am - On-Street Utilization





Saturday, 8am – DPTM Study Area, Excluding Core

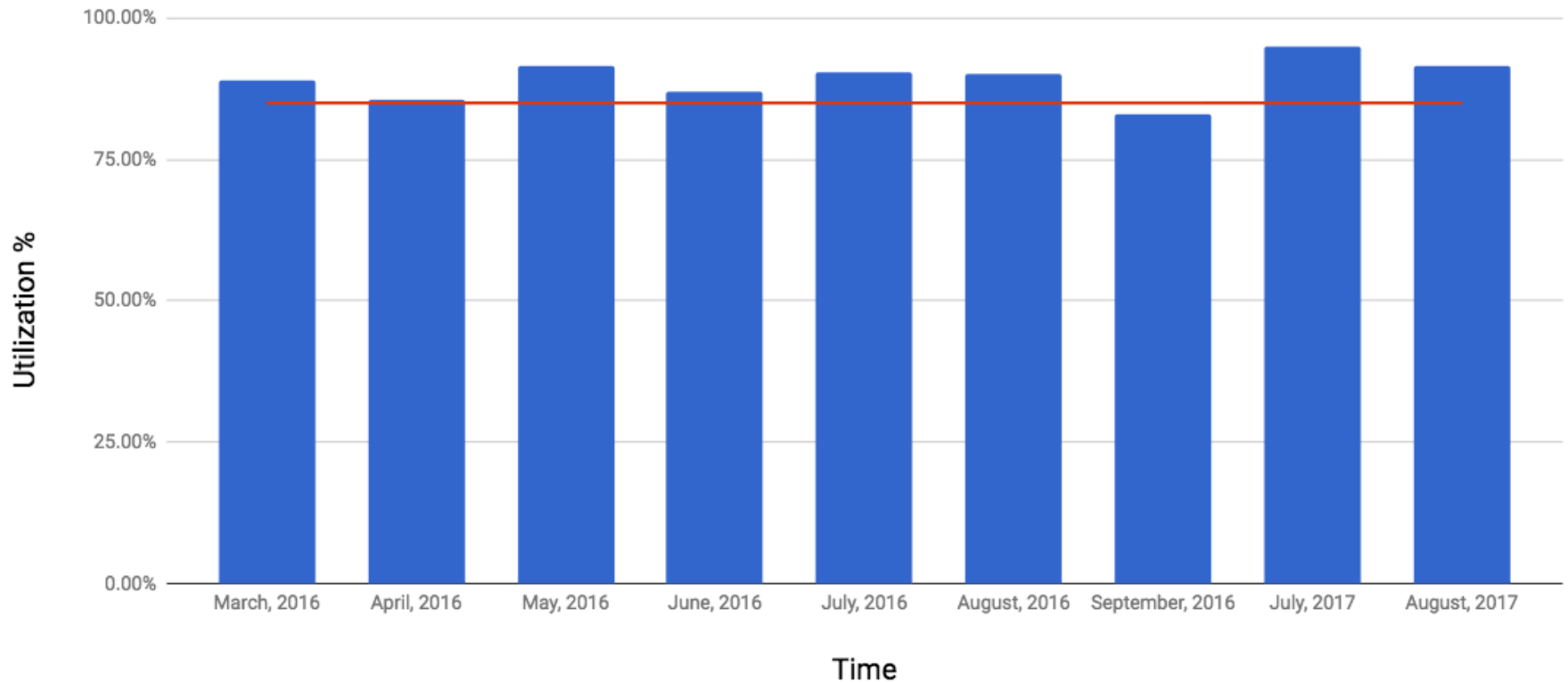
Saturday, 8am: DPTM Study Area, Excluding Core





Thursday, 12-1pm – Downtown Core

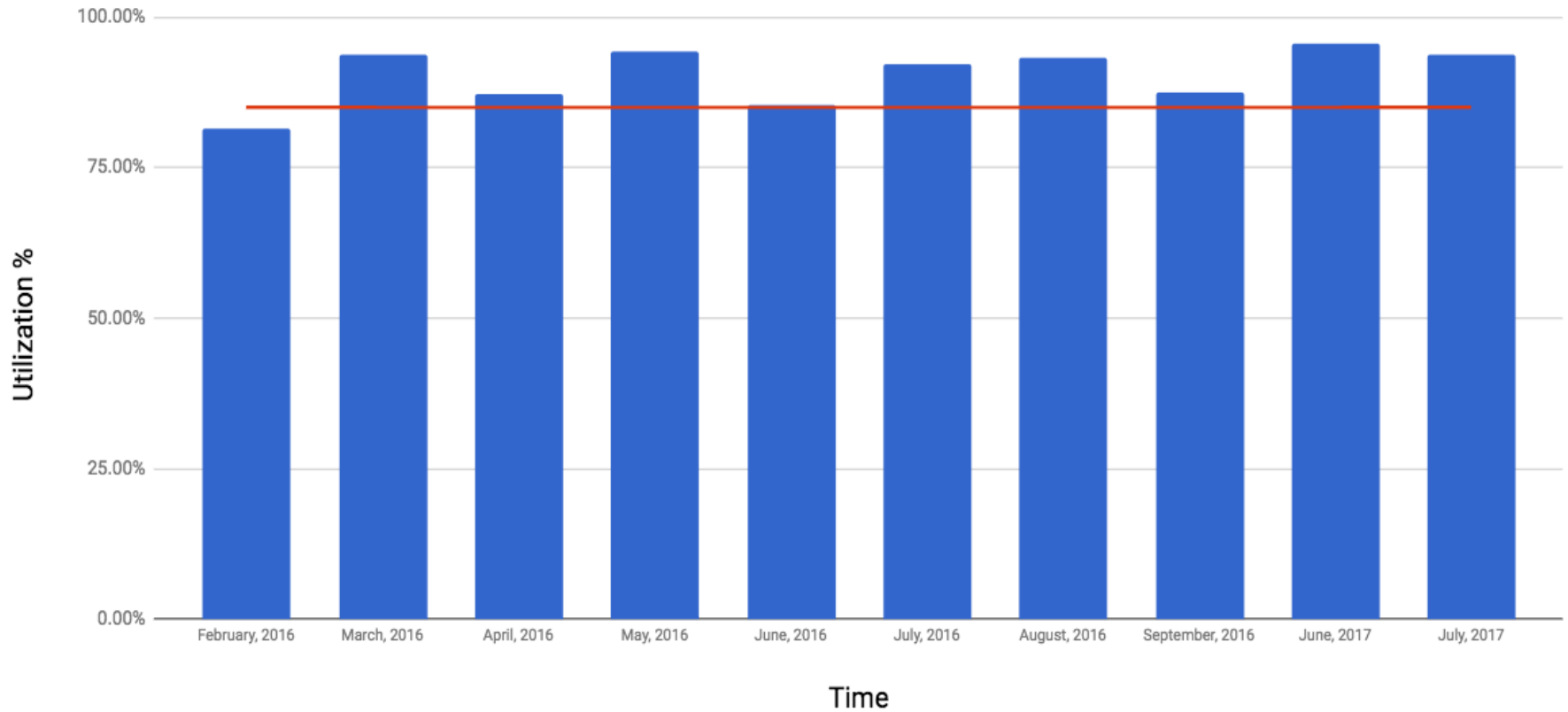
Thursday, 12-1pm: On-Street Utilization





Saturday, 7-7:30pm – Downtown Core

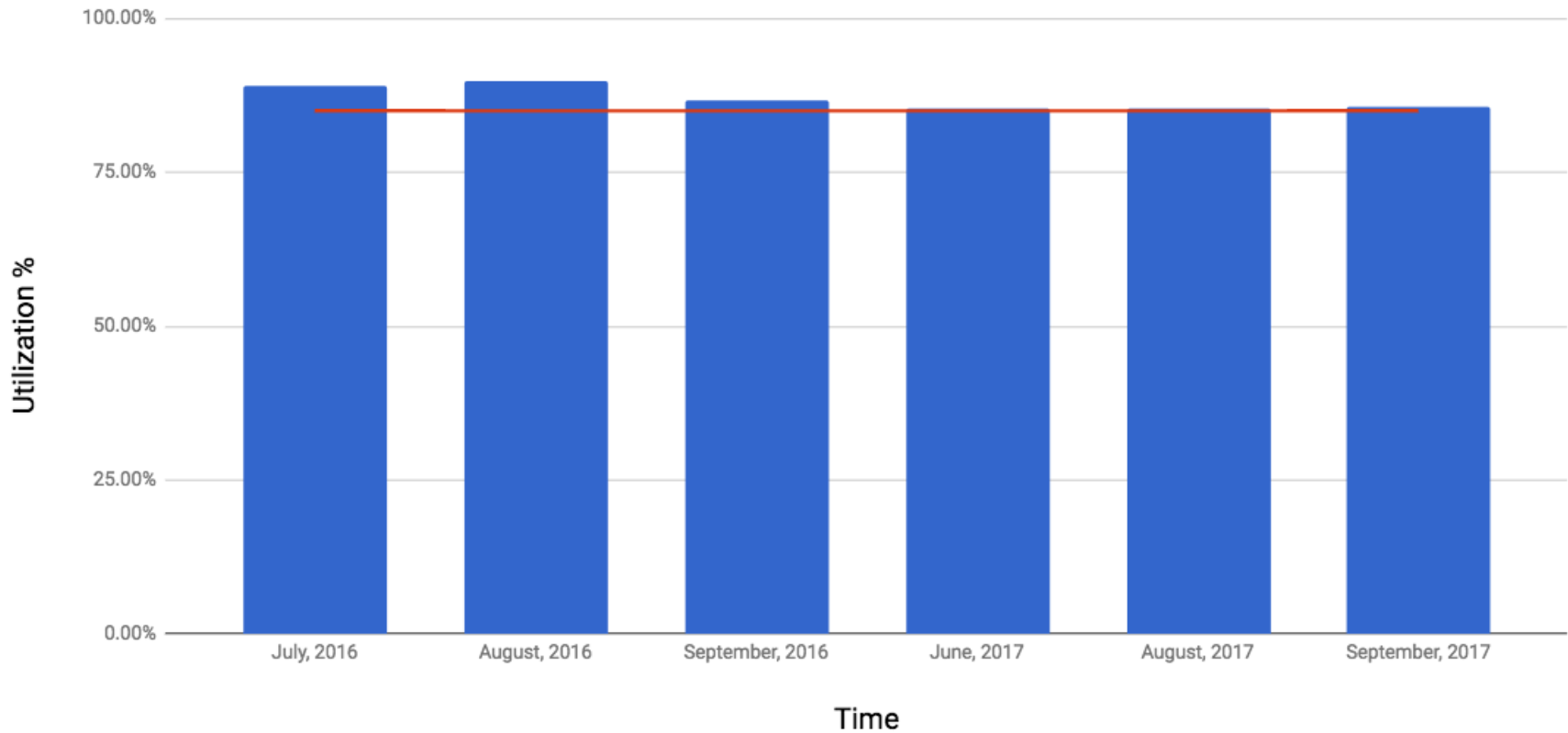
Saturday Evening, 7-7:30pm: On-Street Utilization





Saturday, 8-9pm – Downtown Core

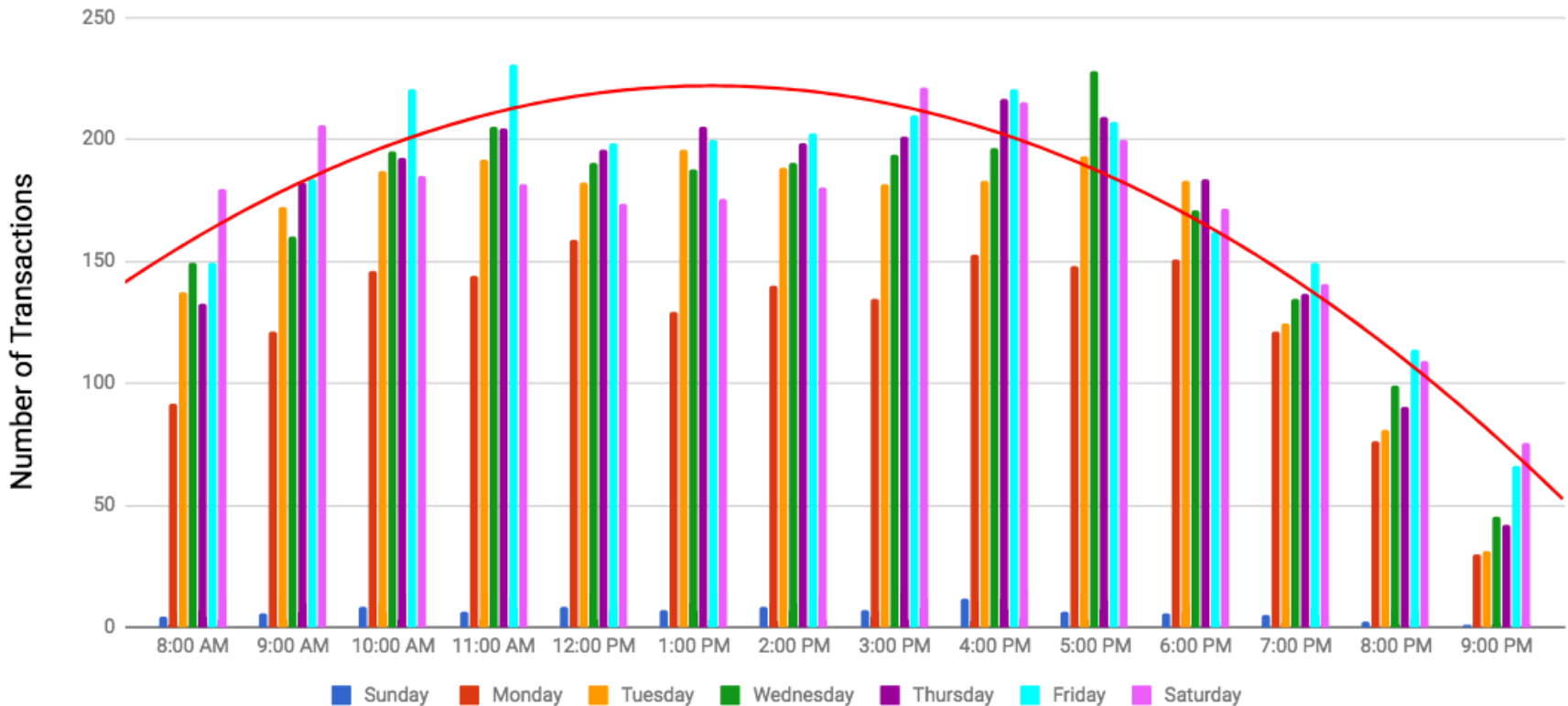
Saturday Evening, 8-9pm: Downtown Core





Transaction Data - Sep. 2017: Daily Averages

New Parking Transactions - Daily Averages: September, 2017

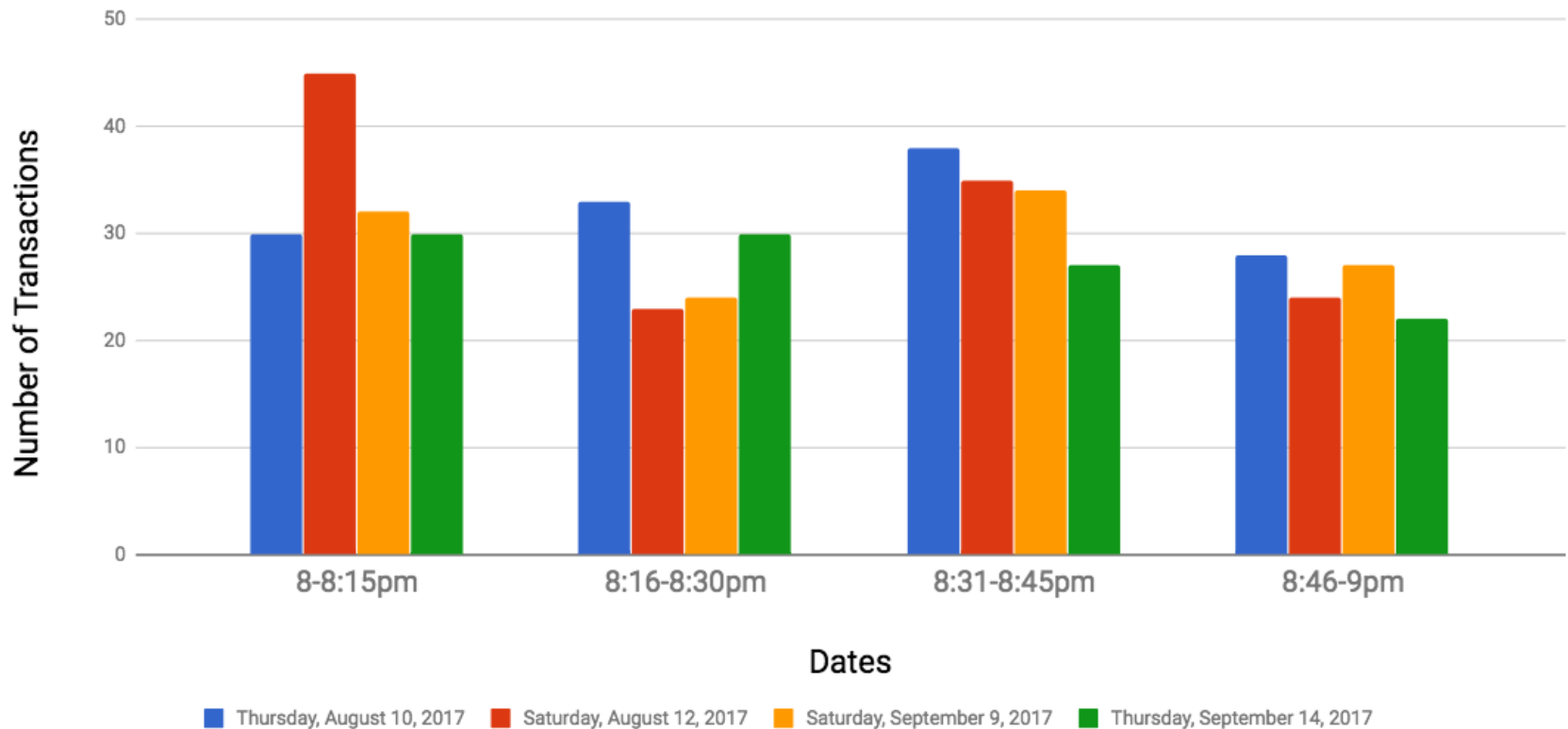


*DATA NOTE: Data extracted from IPS (Smart Meter Software)



Transaction Data, 8-9pm

New Parking Transactions in Downtown Core: 8-9pm



*DATA NOTE: Data extracted from IPS (Smart Meter Software)



What We Learned

- On-street parking use low at 8am
 - Inside and outside downtown core (~37%)
- Short-term meter use low (~58%)
- On-street parking use high through early evening (~86%)
- Drop-off in new parking transactions after 9pm*:
 - Thursday (8/10/17): 69.21% drop-off
 - Saturday (8/12/17): 72.26% drop-off
 - Saturday (9/9/17): 79.77% drop-off
 - Thursday (9/14/17): 85.01% drop-off

*From IPS, compared to average # of new transactions from 6-9pm on same date



Recommendations

- Delay morning on-street enforcement until 9am in all of Burlington (including Main & Winooski Lot)
- Reduce on-street enforcement to 9pm in Downtown Core (including Main & Winooski Lot)
- Convert all 15-minute meters to 30-minute meters in Downtown Core