

Homelessness in Chittenden County

Marcy Esbjerg

CDNR

11.16.17

Background Information

- Who is the Chittenden County Homeless Alliance and what does the Alliance do?
- What are the housing and service options for the homeless in our area?
 - Emergency shelter – by population, high/low barrier
 - Motel Vouchers
 - Minimal transitional housing
 - Permanent Supportive Housing
 - Showers, meals, Daystation

How do we know how many homeless are in the area?

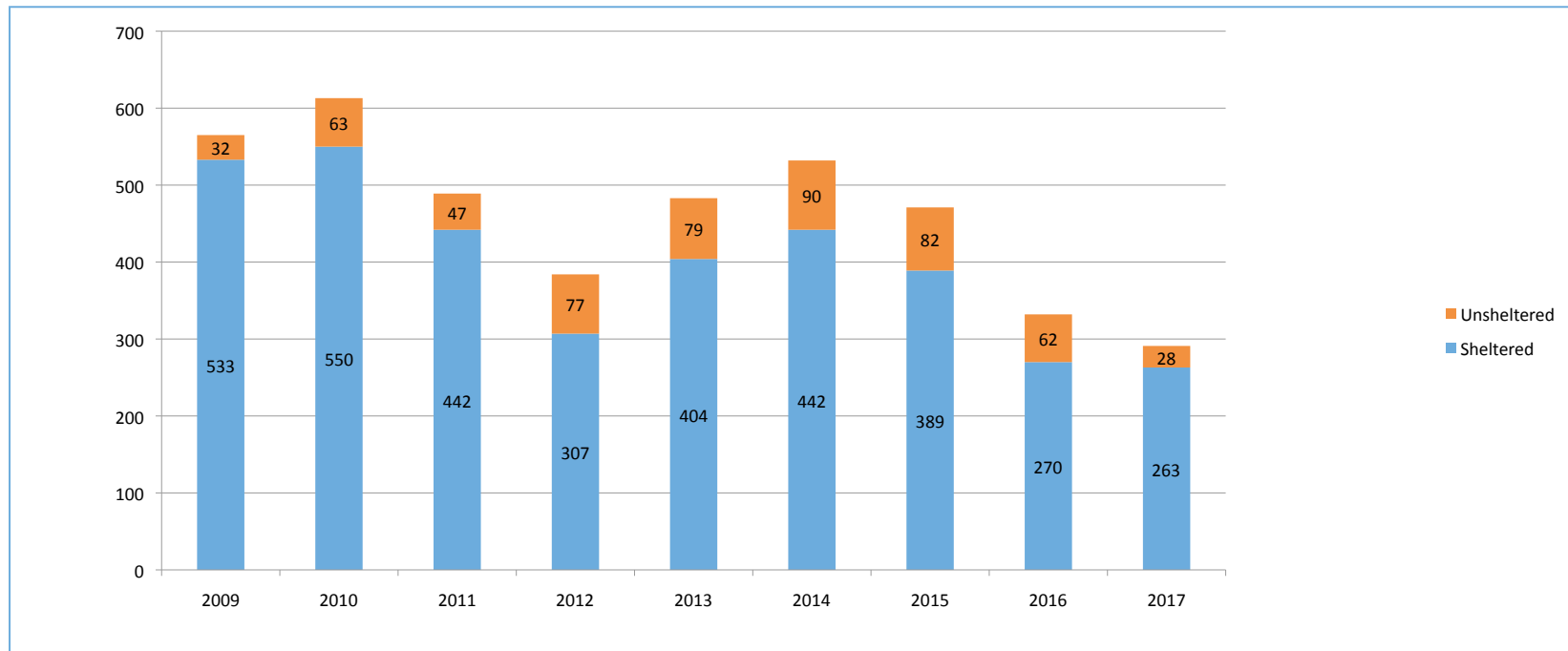
- ▶ Annual point in time count, the last Wednesday of January
- ▶ Statistics since 2009 show community trends
- ▶ 2017 numbers reflect HUD's definition of literal homelessness:
Individuals and families who live in a place not meant for human habitation (including the streets or in their car), emergency shelter, transitional housing, and hotels paid for by a government or charitable organization.
- ▶ Up through 2013, the *precariously housed* count was sent to the State, but not sent to HUD. The precariously housed figure was **not** included in the last four years of total State homelessness counts.
- ▶ Precariously housed figures are counted in other ways, including using data from the Department of Education. 'Precariously housed' is a subjective category.

Chittenden County 2017 Numbers

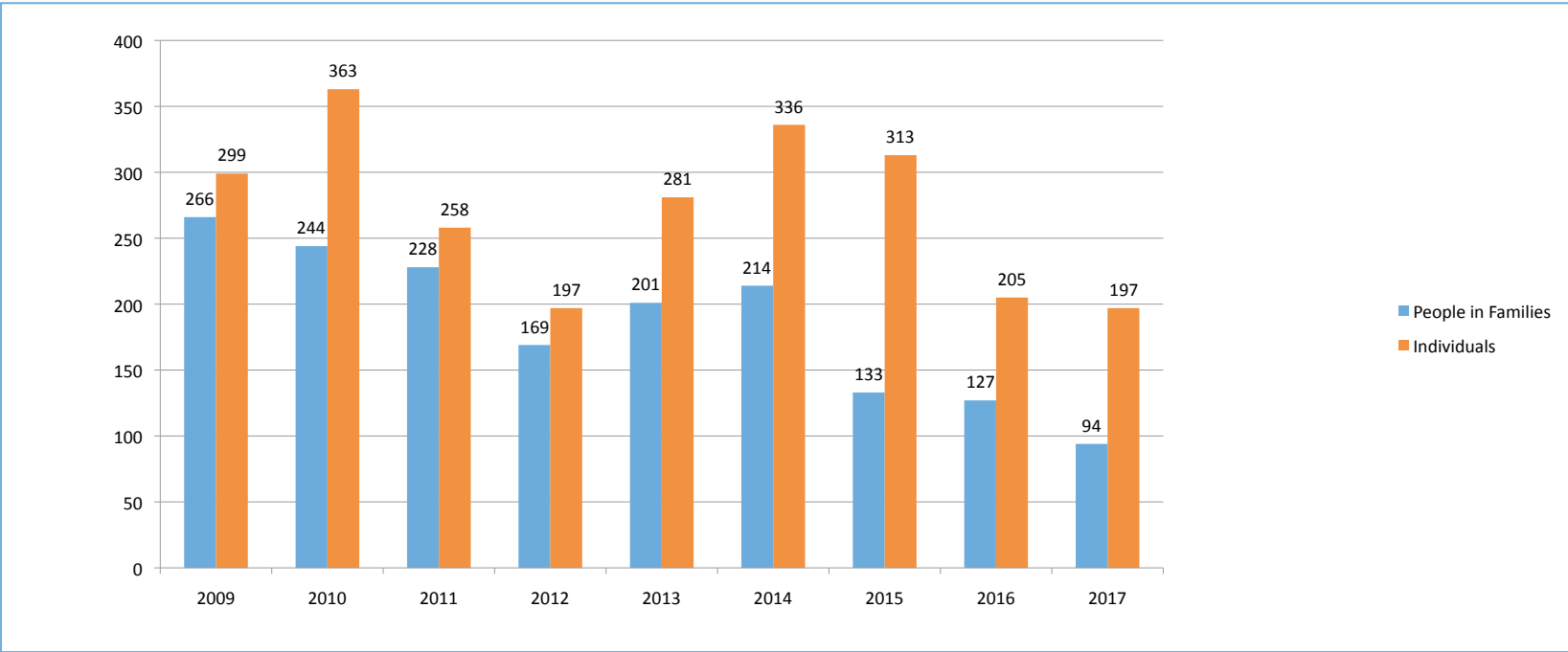
Total: 291

| SHELTERED 263 | UNSHELTERED 28 |
|---|------------------------------------|
| EMERGENCY HOUSING 217 | TRANSITIONAL HOUSING 46 |
| PEOPLE IN FAMILIES 94 | INDIVIDUAL HOMELESS 197 |
| HOUSEHOLDS WITH CHILDREN 37 | HOUSEHOLDS WITHOUT CHILDREN 193 |
| HOMELESS POPULATION BY SUBPOPULATION | |
| Chronically Homeless | 44 |
| Veterans | 25 |
| Severely Mentally Ill | 88 |
| Chronic Substance Abuse | 53 |
| HIV/AIDS | 0 |
| Victims of Domestic Violence | 80 |
| Unaccompanied Children | 0 |

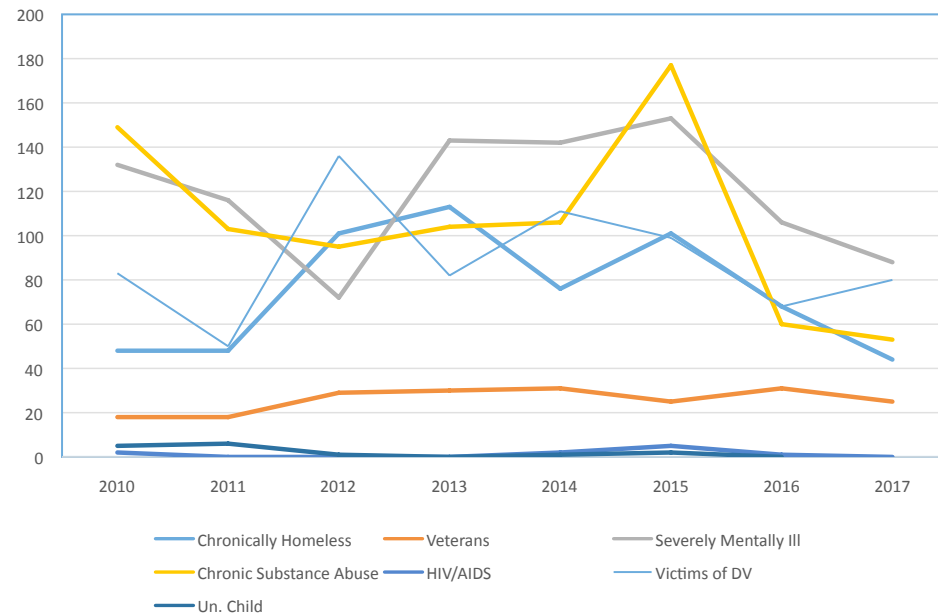
Homeless Population by Sheltered vs Unsheltered



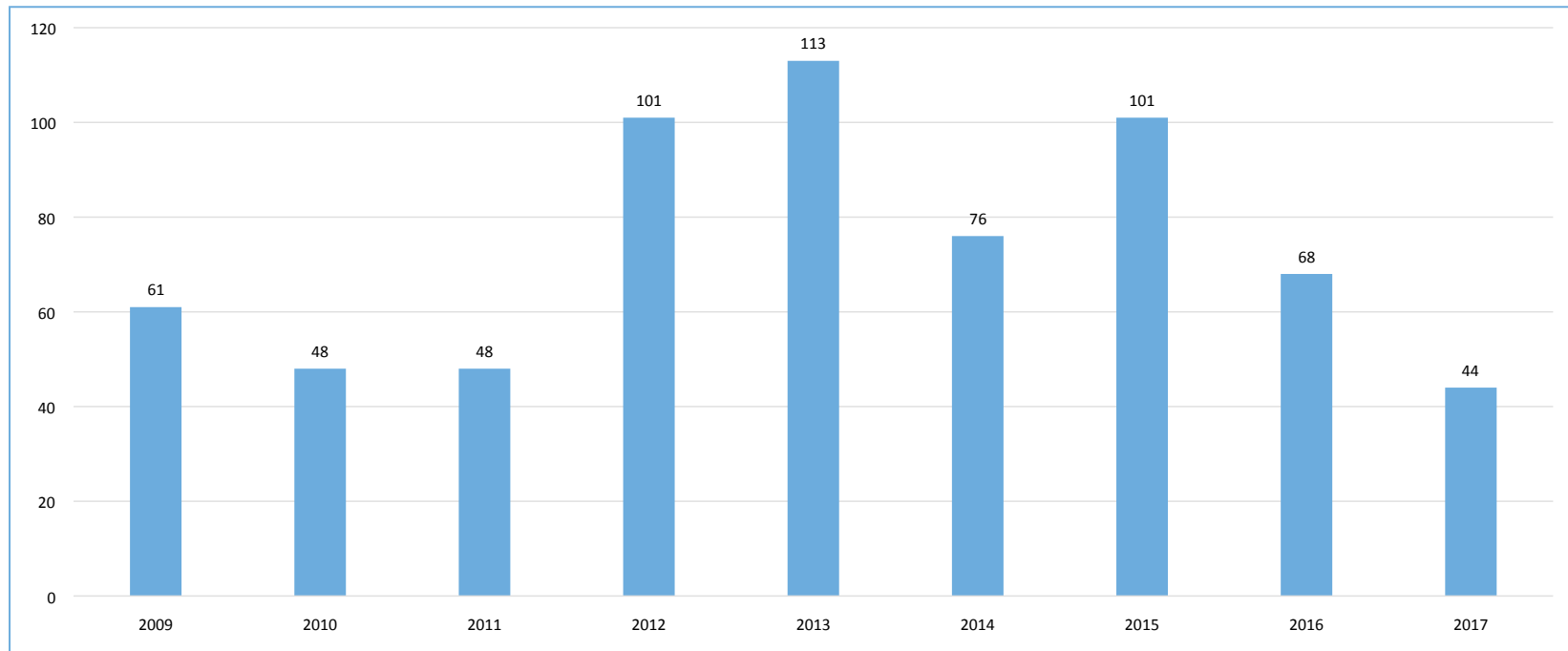
Homeless Population – Individuals vs. Families



Homeless Population by Subpopulation

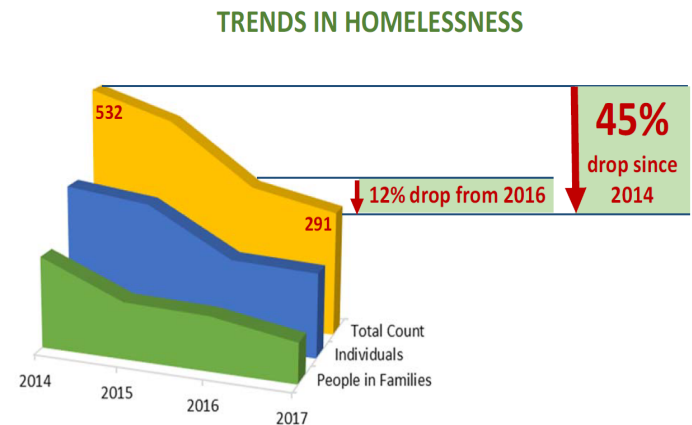


Chronic Homeless Population



How did we get here?

- Ranking of projects
- 100,000 Homes initiative – by person count; community wait list; standardized assessment; prioritizes the most in need
- Difficult conversations and decisions
- Reallocation of funds to PSH projects – project/voucher based
- Coordinated entry for PSH – includes standardized assessment
- Low barrier shelter



How to make homelessness rare and brief

- Next steps – decide on a standardized assessment tool for each population (individuals, youth, families, veterans and survivors of domestic violence)
- Implement coordinated entry process for all
- Implement a prioritization for each category with a community-wide list
- Move people quickly from homelessness to permanent housing

Burlington's Response to Encampments

- Coordinated effort with several departments
- Significant outreach and effort made to connect people to housing and services
- Warming shelter opened on 11/1

