



# WINOOSKI AVE TRANSPORTATION STUDY

---



## North Winooski Ave Parking Management Plan (PMP)

City Council-Stakeholder Committee Meeting #1 | Project Initiation

March 4, 2021

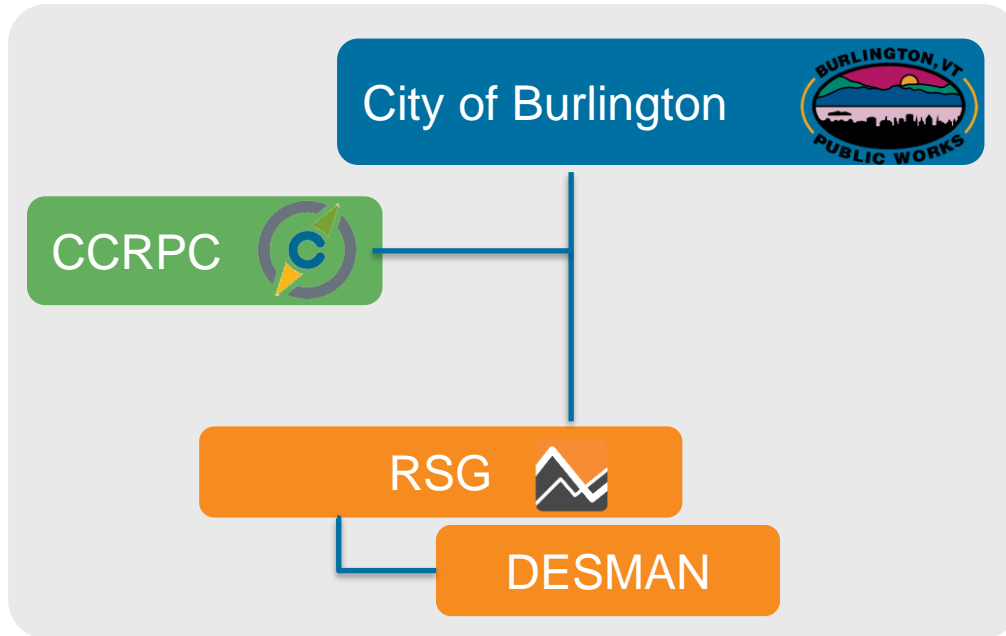


# **Committee Meeting #1: Agenda**

- 1. Welcome, Project Team Introductions, Changes to the Agenda**
- 2. Committee Introductions, Roles & Responsibilities**
- 3. Public Comment Period**
- 4. Parking Management Plan: Purpose, Goals, and Schedule**
- 5. Phase A Scope of Work: Introduction & Committee Discussion**
- 6. Public Comment Period**
- 7. Action: Approve Phase A Scope of Work**
- 8. Next Steps**



# Project Team Structure



## City of Burlington

- Nicole Losch

## CCRPC

- Bryan Davis
- Chris Dubin
- Sai Sarepalli

## RSG/DESMAN

- Corey Mack
- Jonathan Slason
- Aaron Lee
- Justin Culp
- Andy Hill [ DESMAN ]





# City Council-Stakeholder Committee

# Stakeholder Committee

## Seven Members

### City Council TEUC:

- Franklin Paulino
- Jack Hanson
- Jane Stromberg

### Community members:

- Charles Sizemore
- Kelly Duggan
- Kirsten Merriman Shapiro
- Maxwell Horovitz

Introduction, affiliation, community members: why did you volunteer to be on the committee, and what are your goals for this project?



# Committee Role & Responsibilities

City Council direction:

- Approve the Scope of Work, methodology, and public engagement plan
  - Today: Phase A Scope of Work and technical methodology
  - May: Phase B Scope of Work, public engagement, and final methodology
- Review recommendations of the draft PMP
- Approve the final PMP
  - Ward 2/3 NPA presentation before final approval



# Committee Structure

- Committee will function as a public body
- Committee members may not meet in person or via email to discuss the Parking Management Plan outside of established meetings
- Follow open meeting law requirements
  - DPW will advertise meetings
  - Meeting materials available online
- Meetings are open to the public and include time for public comments





# Public Comment Period

## **To participate in public comment:**

- If signed in via Zoom, please use the “Raise Your Hand” feature to alert the project team that you wish to speak during public comment period. When it’s your turn to speak, your name will be called and you will be unmuted. In the event of challenges with Zoom video, please use the call-in option.
- If you are calling in, please press \*9 which will alert the project team that you wish to speak. Your phone # will be called out and you will be unmuted when it’s your turn to speak.
  - Comments in the YouTube livestream are not monitored – please participate through Zoom platform or phone, connection details:  
<https://www.burlingtonvt.gov/dpw/WinAveImprovements>

If you encounter any difficulties when attempting to speak during public forum, please email [nlosch@burlingtonvt.gov](mailto:nlosch@burlingtonvt.gov).





# **Parking Management Plan: Purpose, Goals, and Schedule**

# Purpose and Goals

## Interim Actions resulting from Corridor Study

As directed by City Council, the North Winooski Avenue Parking Management Plan (PMP) will **identify practical strategies for balancing parking supply and demand north of Pearl Street, with the goal of meeting essential parking needs while freeing up space for dedicated bike lanes.**

### Achieving this goal by:

- Convening this Stakeholder Committee
- Model how actual demand compares to parking supply based on observed conditions (data on parking occupancy in the corridor and the overlapping demands of the various land uses)
- Management strategies to influence the demand for parking in the corridor
- Engage with the community to account for impacts and identification of the essential parking needs.



# Scope of Work

Phased approach:

**PHASE A:** technical work not directly impacted by COVID

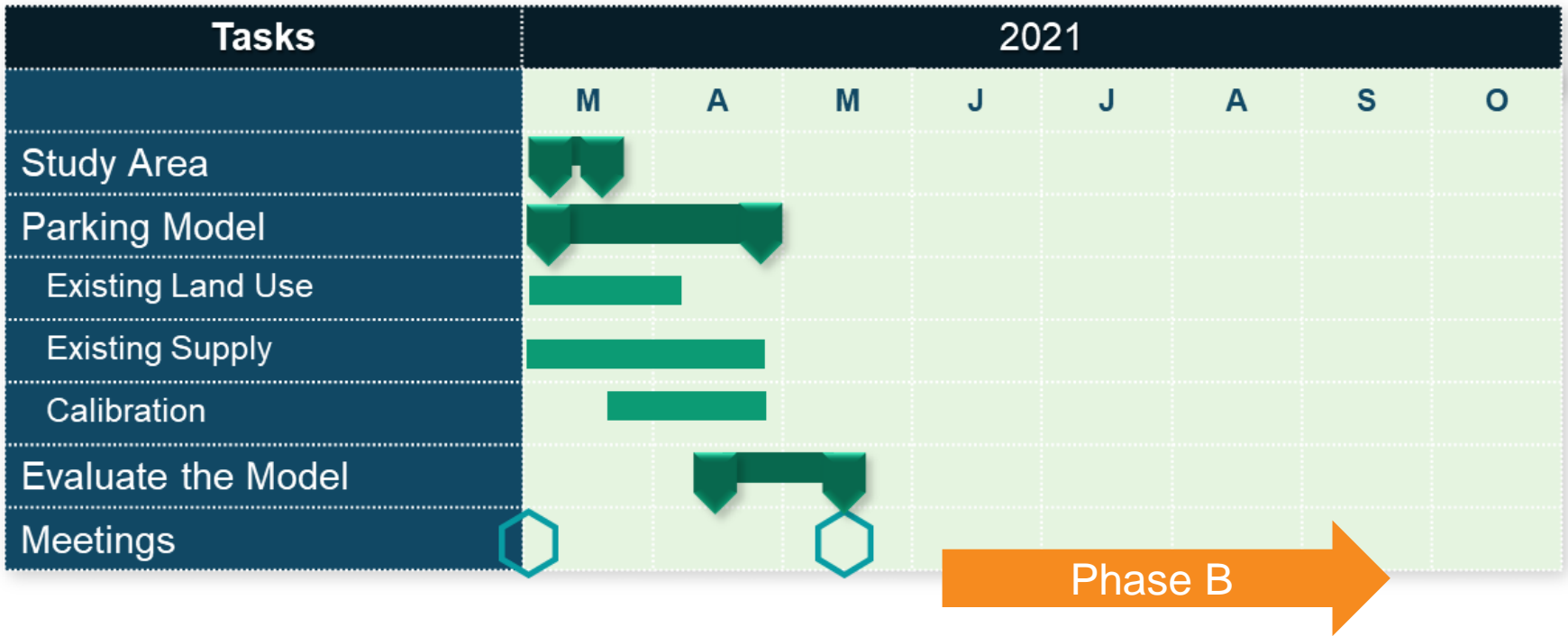
- Beginning conversation with Stakeholder Committee
- Understand the source of parking demand

**PHASE B:** management strategies and public engagement

- Scope to be informed by the results of Phase A



# Schedule



Phase B  
Scope and tasks of Phase B to be discussed at next meeting with results of modeling





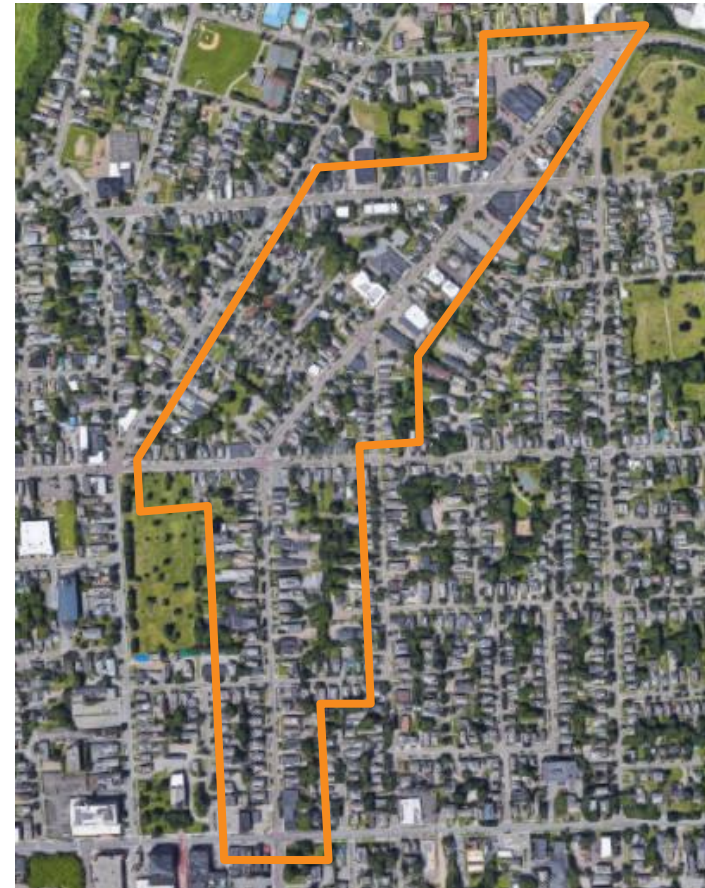
# Phase A Scope of Work

# Phase A Scope of Work

## TASK 1: DEFINE THE GEOGRAPHIC SCOPE OF THE STUDY AREA

All on- and off-street parking fronting along:

- Winooski Ave between Pearl St and Riverside Ave
- All intersecting side streets between Winooski Ave and next intersection
  - Riverside Ave, Archibald St, Decatur St, Crombie St, North St, Grant St, Pearl St
- Parallel streets not included
  - Bright St / Willard St
  - Intervale Ave / Hyde St
  - Elmwood Ave / N Union St



Source: RSG using Google Earth background image

# Phase A Scope of Work

## **TASK 2: DETERMINE EXISTING CONDITIONS**

### 2.1: Document the Existing Supply

Count all parking spaces:

- On-street or off-street spaces (public and private, shared or reserved).
- Restrictions by time or use (loading, accessible, 15-minute).
- Georeference location, number of spaces, lot size or curb length.

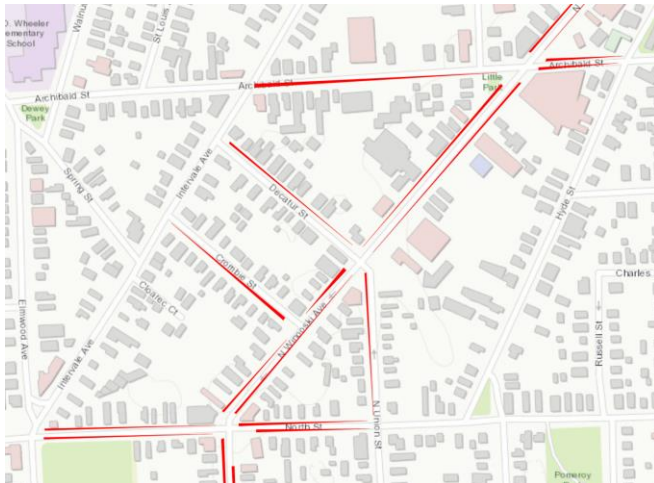


# Phase A Scope of Work

## HOW IT'S DONE: DOCUMENTING EXISTING SUPPLY

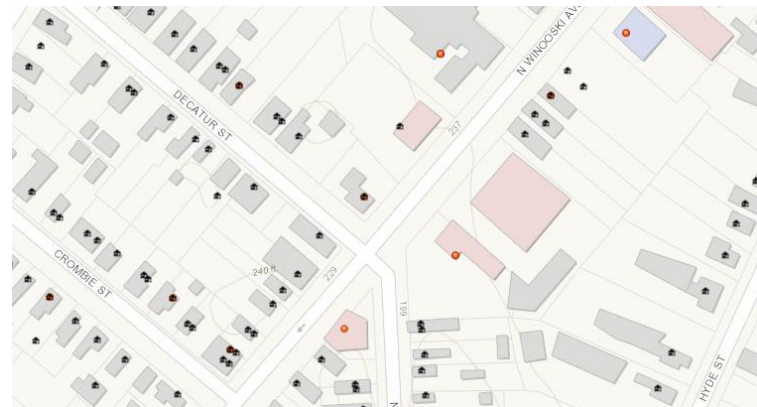
### On-Street

- Block by block number of spaces
- Restrictions noted
- Coded into GIS shapefile
- Approx. 28 segments



### Off-Street

- Address by address estimate of supply of parking
- Field work and desktop
- Create address-based polygons in GIS
- Currently 386 parcels



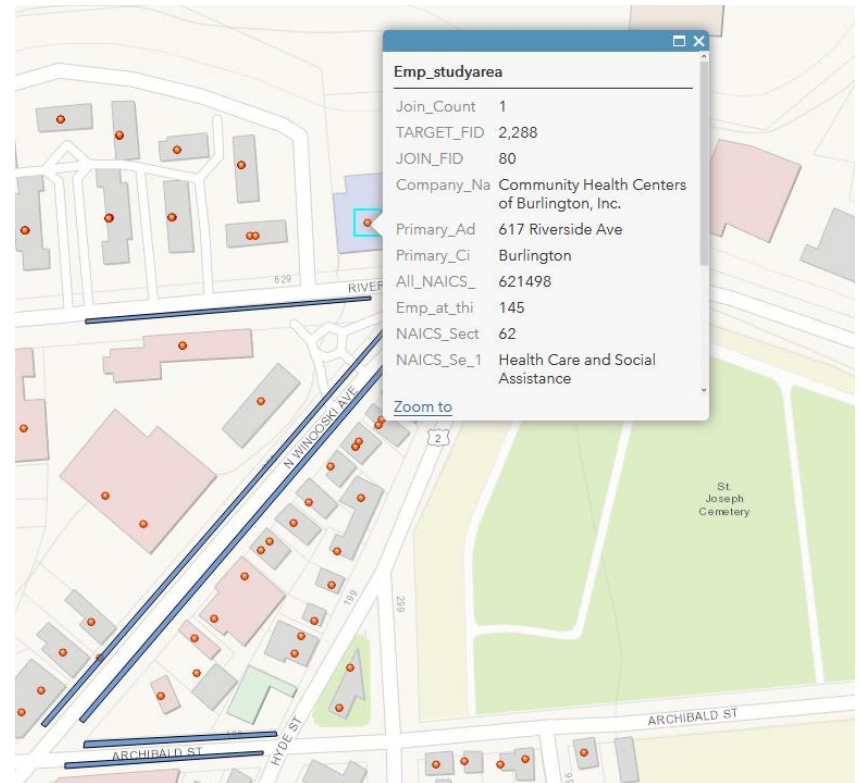


# Phase A Scope of Work

## TASK 2: DETERMINE EXISTING CONDITIONS

### 2.2: Estimate Parking Demand

Develop Parking Analysis Model  
based on land uses



# Phase A Scope of Work

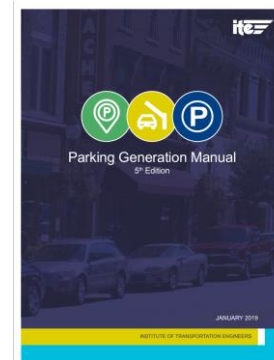
## HOW IT'S DONE: ESTIMATING PARKING DEMAND

For each block, calculate:

- Number of residential units
- Size and type of businesses

Use national data sources to estimate parking demand associated with each land use

Estimate parking demand for each block



(ITE) Traditional stand-alone land use parking demand. Ignores nearby land uses

(ULI) Parking generation rates and sensitivity for how a collection of land uses may lower net parking supply needed to meet individual land use demands



# Phase A Scope of Work

## **TASK 2: DETERMINE EXISTING CONDITIONS**

2.3: Develop model to assign parking and estimate occupancy

### **HOW IT'S DONE: DEVELOPING THE MODEL**

A python script GIS platform to assign parking based on time of day / day of week demand, supply, distance, and restrictions

Compare how the model reflects local conditions

- Pre-COVID on-street parking counts on North Winooski Ave
- Parking counts from other local parking studies (e.g. Downtown Parking Study)

Refine the model to reflect local conditions and present to the Committee





# Committee Discussion



# Public Comment Period

## **To participate in public comment:**

- If signed in via Zoom, please use the “Raise Your Hand” feature to alert the project team that you wish to speak during public comment period. When it’s your turn to speak, your name will be called and you will be unmuted. In the event of challenges with Zoom video, please use the call-in option.
- If you are calling in, please press \*9 which will alert the project team that you wish to speak. Your phone # will be called out and you will be unmuted when it’s your turn to speak.
  - Comments in the YouTube livestream are not monitored – please participate through Zoom platform or phone, connection details:  
<https://www.burlingtonvt.gov/dpw/WinAveImprovements>

If you encounter any difficulties when attempting to speak during public forum, please email [nlosch@burlingtonvt.gov](mailto:nlosch@burlingtonvt.gov).

# Action: Approve Draft Scope of Work

**TASK 1: DEFINE THE GEOGRAPHIC SCOPE OF THE STUDY AREA**

**TASK 2: DETERMINE EXISTING CONDITIONS**

**2.1:** Document the Existing Supply

**2.2:** Estimate Parking Demand

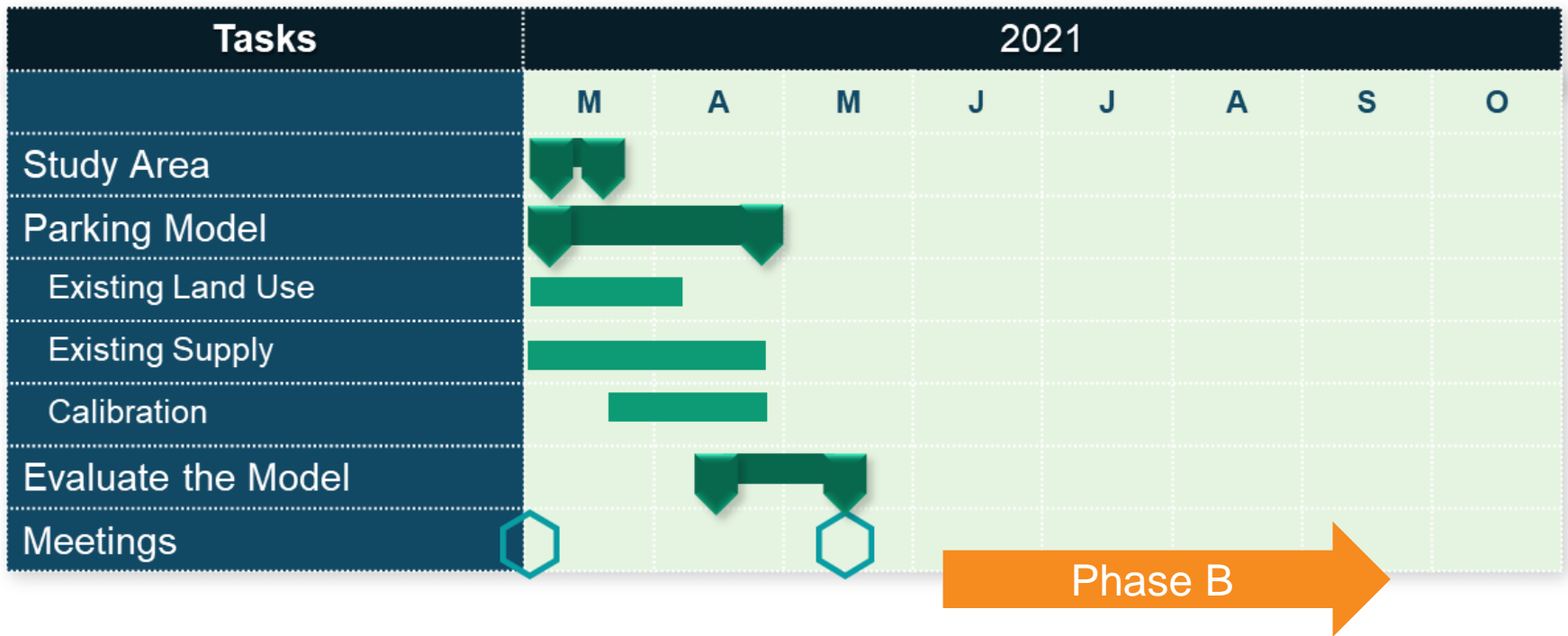
**2.3:** Develop and Evaluate the Model





## Next Steps

# Next Steps



Phase B

Scope and tasks of Phase B to be discussed at next meeting with results of modeling





# Thank You!

## PROJECT INFORMATION:

Burlington Public Works Website: <https://www.burlingtonvt.gov/dpw/WinAveImprovements>

CCRPC Website: [Winooski Avenue Corridor Study](#)

## CONTACTS:

**COREY MACK | PROJECT MANAGER**

RSG

Corey.Mack@rsginc.com

802.861.0513

**JONATHAN SLASON**

RSG

Jonathan.Slason@rsginc.com

802.861.0508

**BRYAN DAVIS**

CCRPC

bdavis@ccrpcvt.org

802.861.0129

**NICOLE LOSCH**

CITY OF BURLINGTON PUBLIC WORKS

nlosch@burlingtonvt.gov

802.391.6809

*Steering Committee*



**CHITTENDEN COUNTY RPC**  
Communities Planning Together



**DESMAN**

*Consultant Team*