

SITE LOCATION

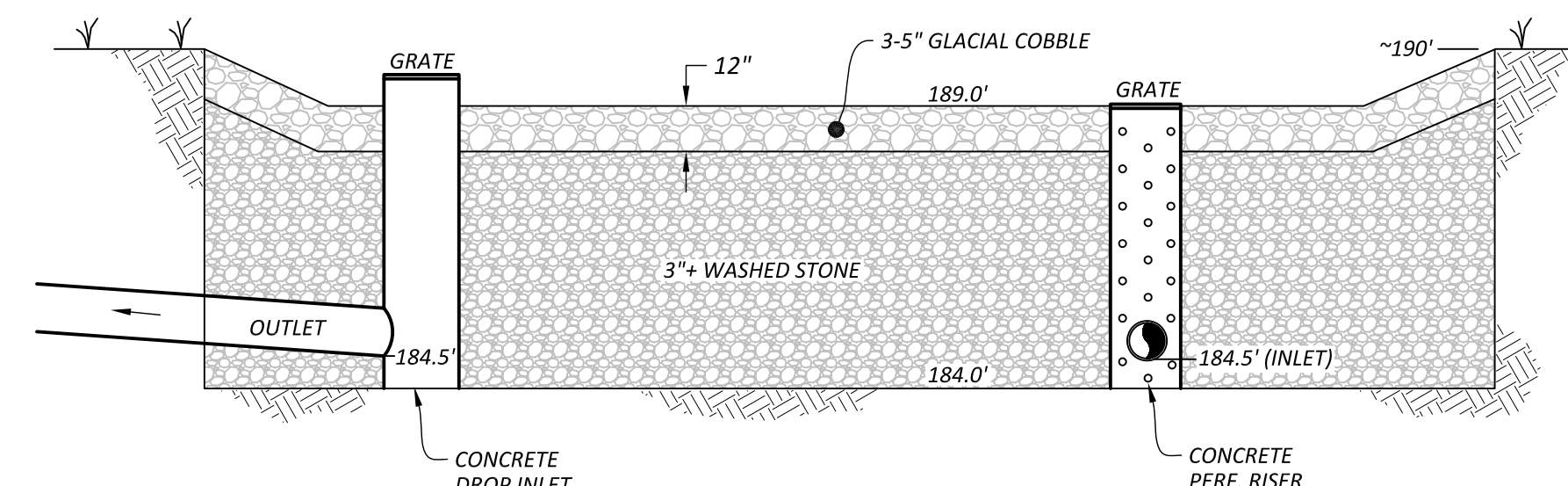
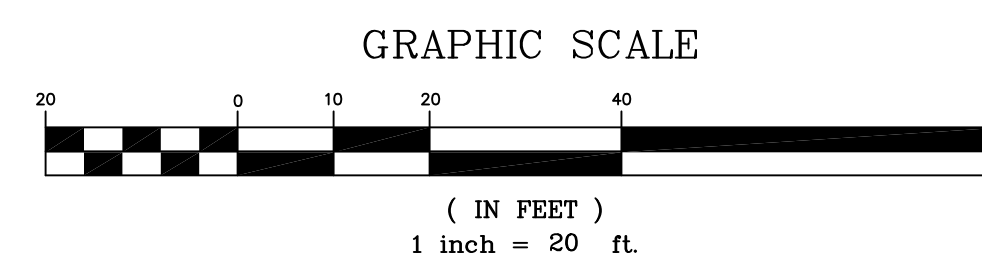
NTS

LEGEND

- S SANITARY SEWER
- W WATER LINE
- T UNDERGROUND TELEPHONE
- E UNDERGROUND ELECTRIC
- G GAS LINE
- ST STORM SEWER
- CATCH BASIN
- HYDRANT
- UTILITY POLE
- ☆ LIGHT POLE
- +212.8 SPOT ELEVATION
- EXISTING TREE
- PROPOSED PLANTING

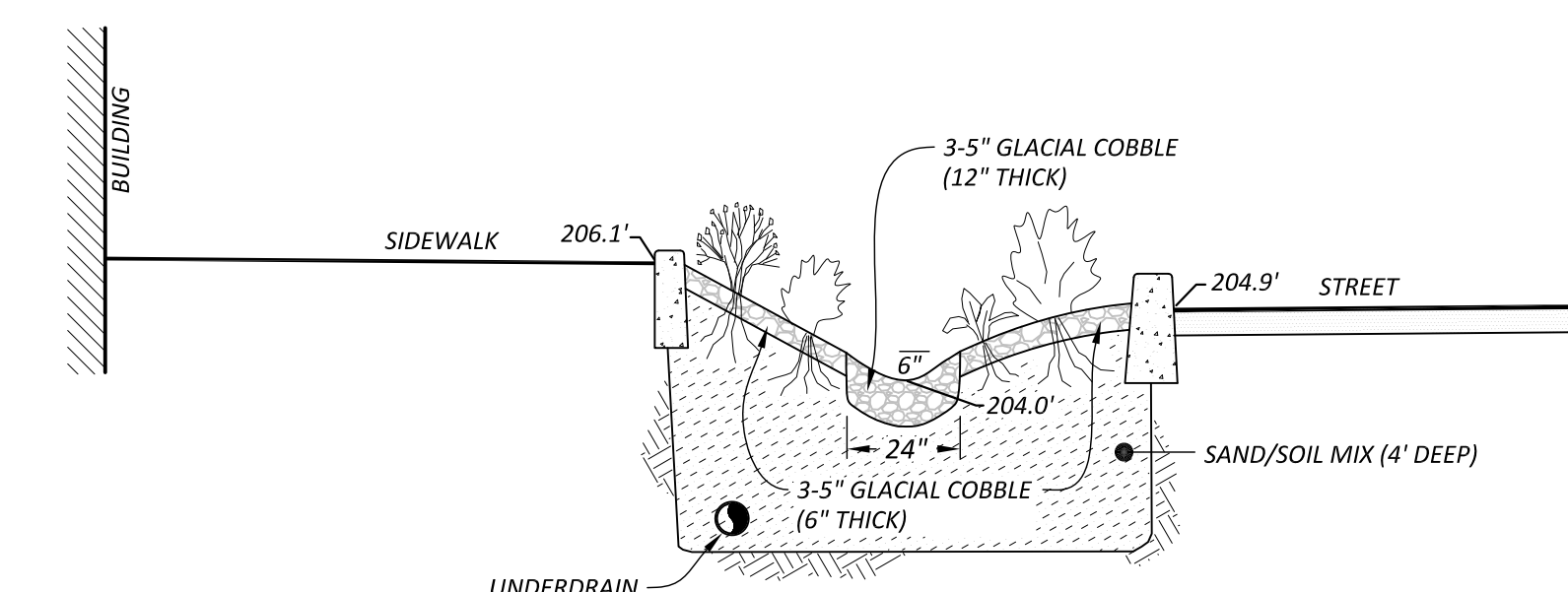
NOTES

- AGE/QUALITY OF EXISTING STORM INFRASTRUCTURE HAS NOT BEEN COMPREHENSIVELY ASSESSED AND MUST BE VERIFIED.
- EXISTING UTILITY INFORMATION BASED ON HISTORIC PLANS AND SITE SURVEY BY THIS OFFICE ON 11-13-13. LOCATIONS AND DEPTH OF UNDERGROUND UTILITIES TO BE FIELD CONFIRMED.
- "GREEN": AREA TO BE AMENDED WITH LANDSCAPING FEATURES FOR SOIL STABILIZATION AND IMPROVED AESTHETICS.



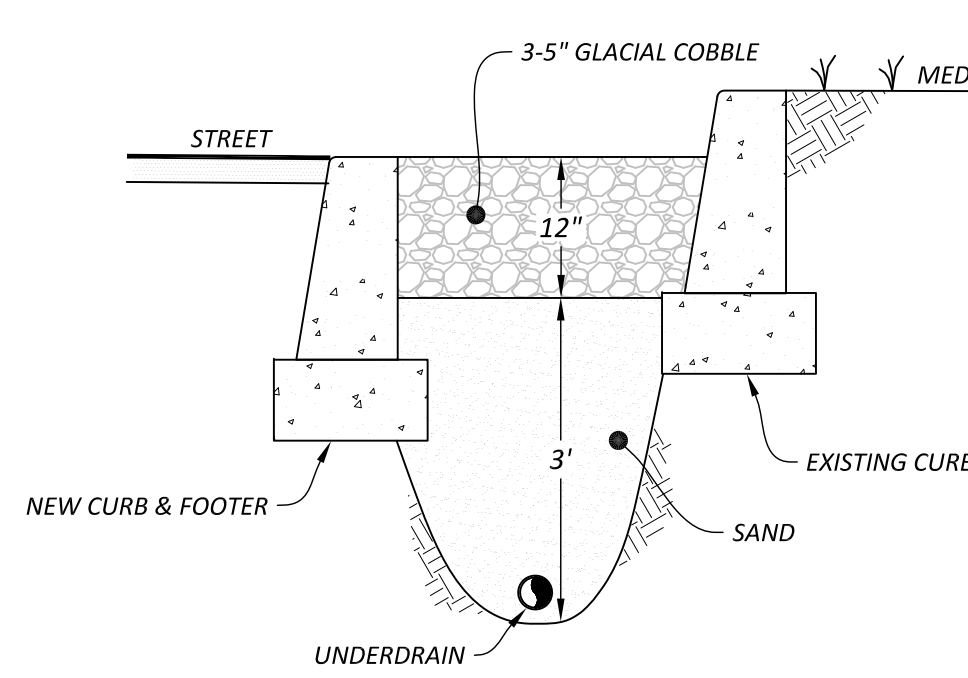
SECTION 1

NTS



SECTION 2

NTS



SECTION 3

NTS

DRAFT

COLLEGE STREET STORM DRAIN SYSTEM
BURLINGTON, VERMONT

BANK STREET STORMWATER IMPROVEMENT PLAN

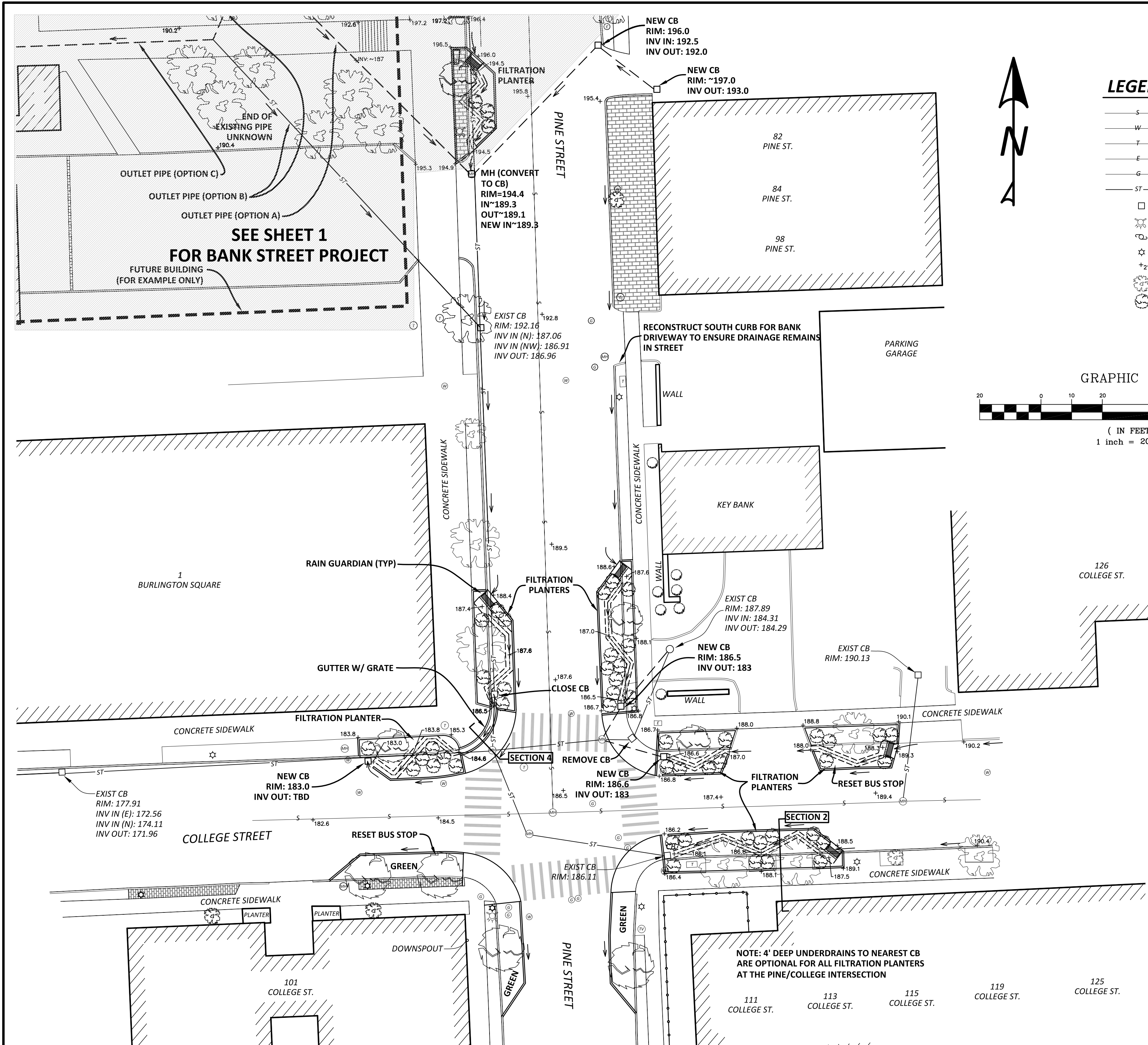


Stormwater Management | Water Quality | Erosion Control
430 Shelburne Road P.O. Box 4413
Burlington, VT 05406
Mobile: 802.922.4871 | Main: 802.497.2367
www.watershedca.com

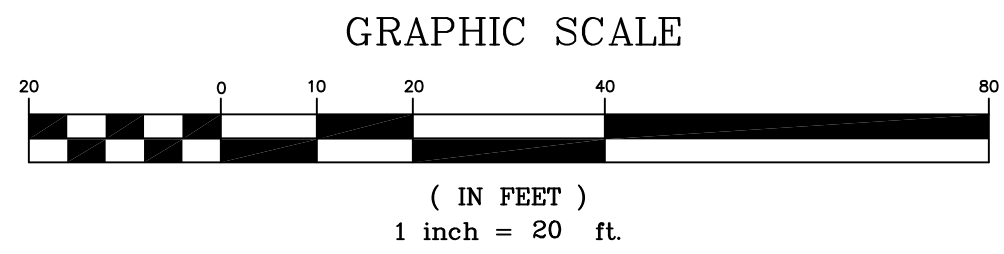
DRAWN BY: SMS
CHECKED BY: AT/ATS/SMM
APPROVED BY: AT
DATE: 11-22-13
SCALE: NOTED
SHEET: 1 OF 5



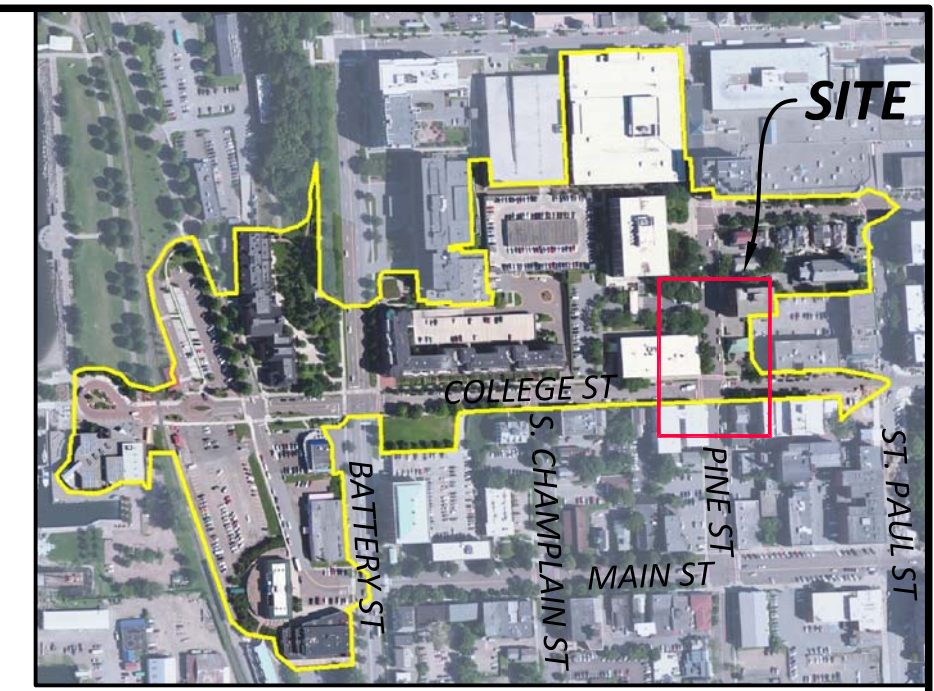
SMM
SCOTT MICHAEL MAPES
POST OFFICE BOX 5517
BURLINGTON, VERMONT
802-964-8100



- LEGEND**
- S SANITARY SEWER
 - W WATER LINE
 - T UNDERGROUND TELEPHONE
 - E UNDERGROUND ELECTRIC
 - G GAS LINE
 - ST STORM SEWER
 - CATCH BASIN
 - HYDRANT
 - UTILITY POLE
 - LIGHT POLE
 - SPOT ELEVATION
 - EXISTING TREE
 - PROPOSED PLANTING

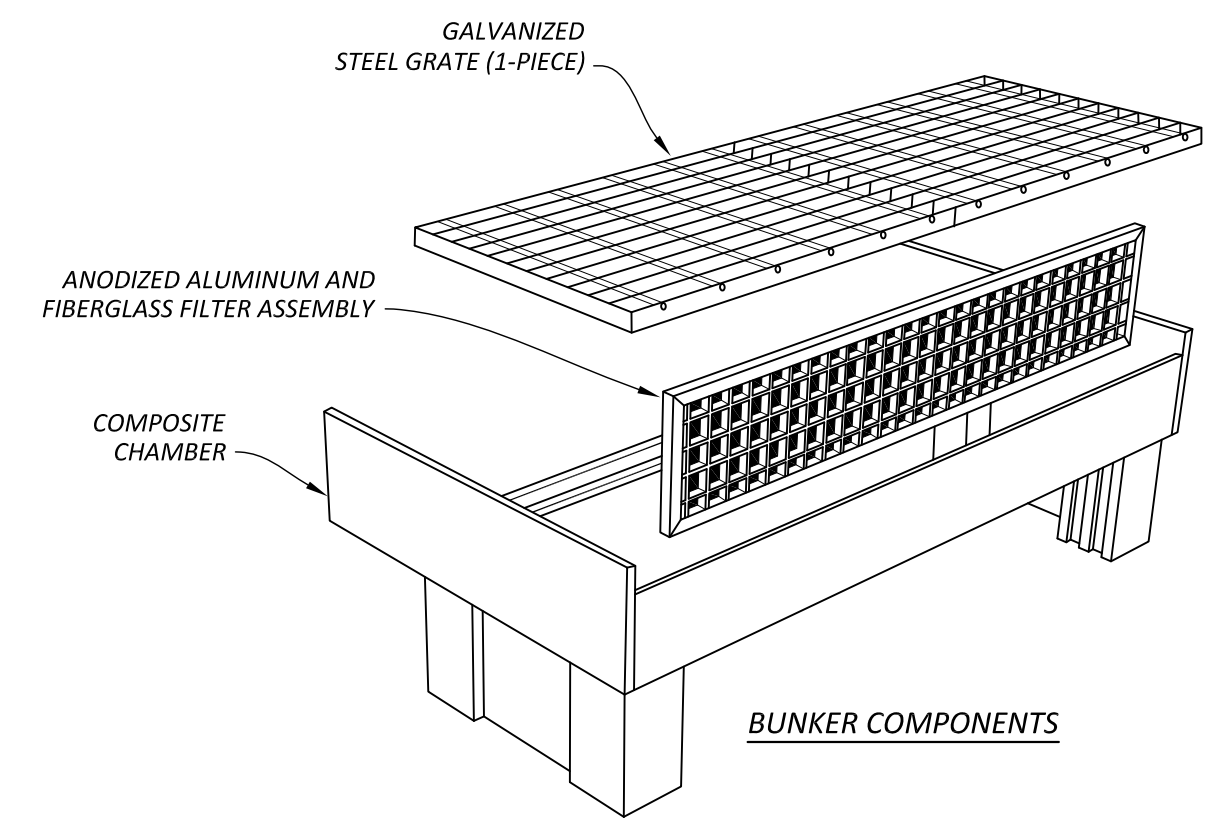


- NOTES**
1. AGE/QUALITY OF EXISTING STORM INFRASTRUCTURE HAS NOT BEEN COMPREHENSIVELY ASSESSED AND MUST BE VERIFIED.
 2. EXISTING UTILITY INFORMATION BASED ON HISTORIC PLANS AND SITE SURVEY BY THIS OFFICE ON 11-13-13 AND 12-3-13. LOCATIONS AND DEPTH OF UNDERGROUND UTILITIES TO BE FIELD CONFIRMED.
 3. "GREEN": AREA TO BE AMENDED WITH LANDSCAPING FEATURES FOR SOIL STABILIZATION AND IMPROVED AESTHETICS.

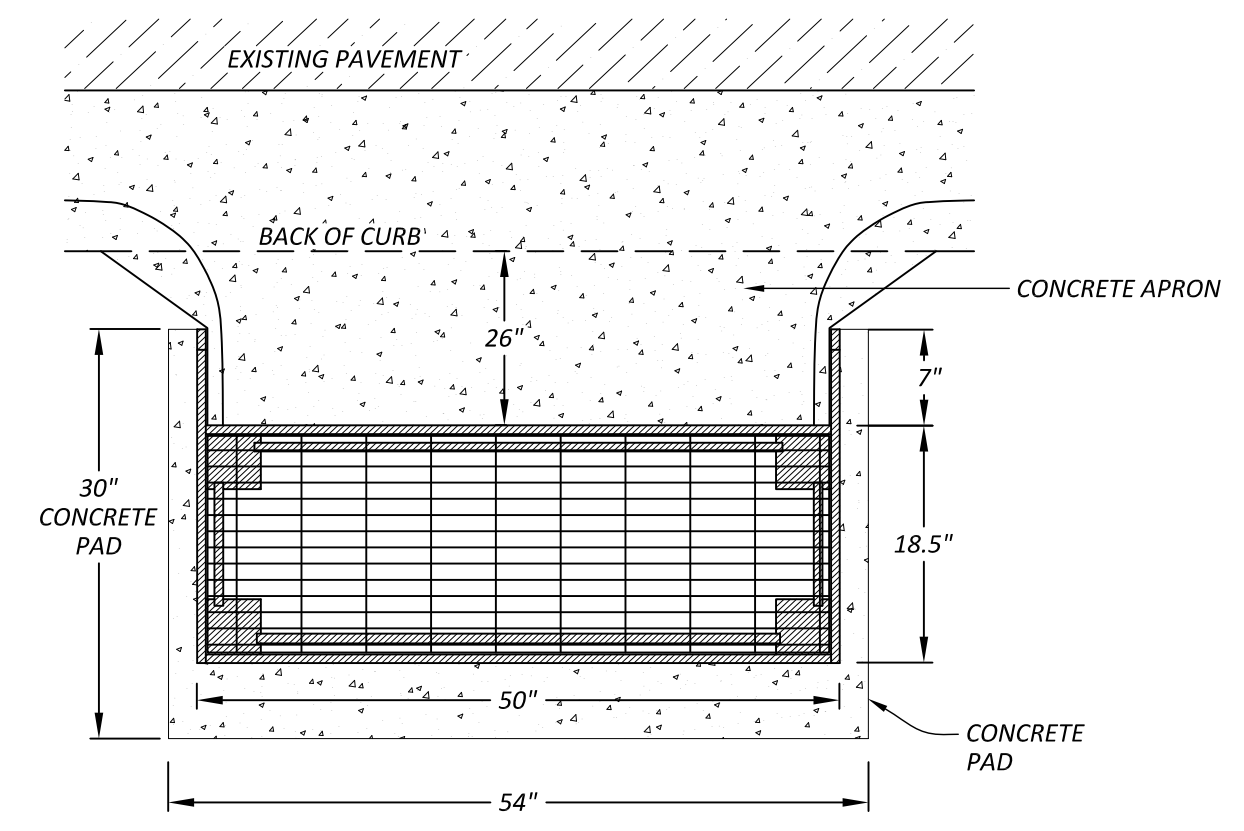


SITE LOCATION

NTS

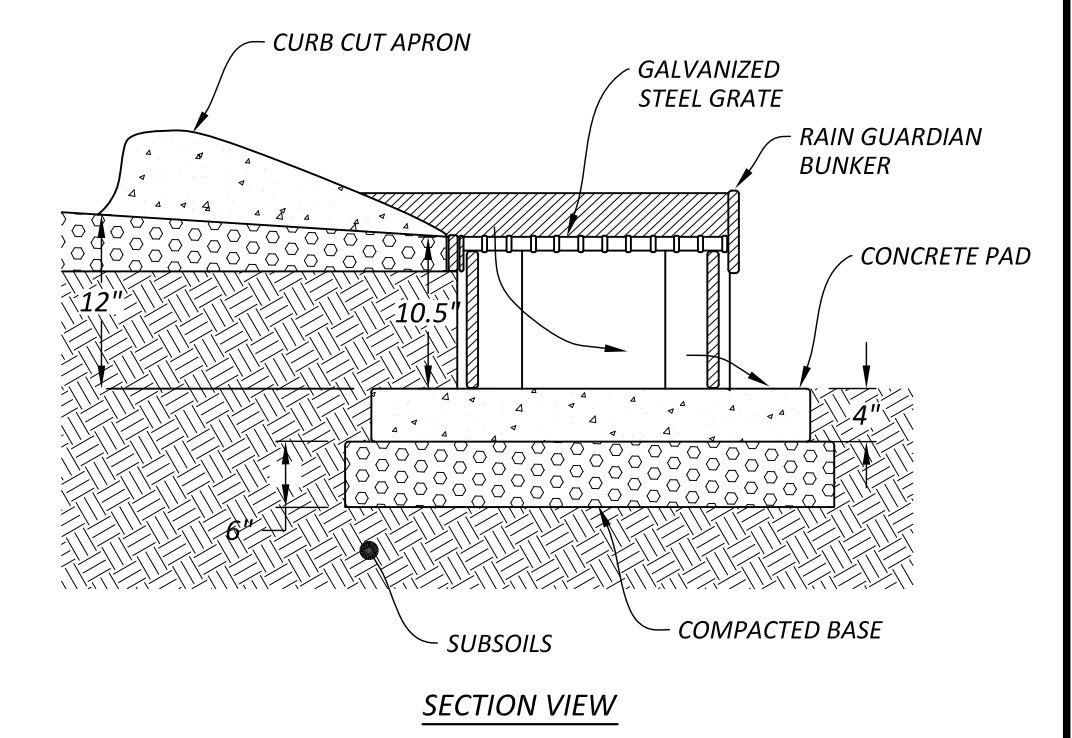


BUNKER COMPONENTS



RAIN GUARDIAN DETAIL

NTS



SECTION VIEW

DRAFT

COLLEGE STREET STORM DRAIN SYSTEM

BURLINGTON, VERMONT

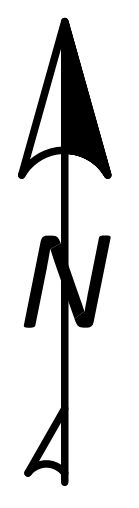
COLLEGE/PINE ST. INTERSECTION STORMWATER IMPROVEMENT PLAN



Stormwater Management | Water Quality | Erosion Control
430 Shelburne Road P.O. Box 4413
Burlington, VT 05406
Mobile: 802.922.4871 | Main: 802.497.2367
www.watershedca.com

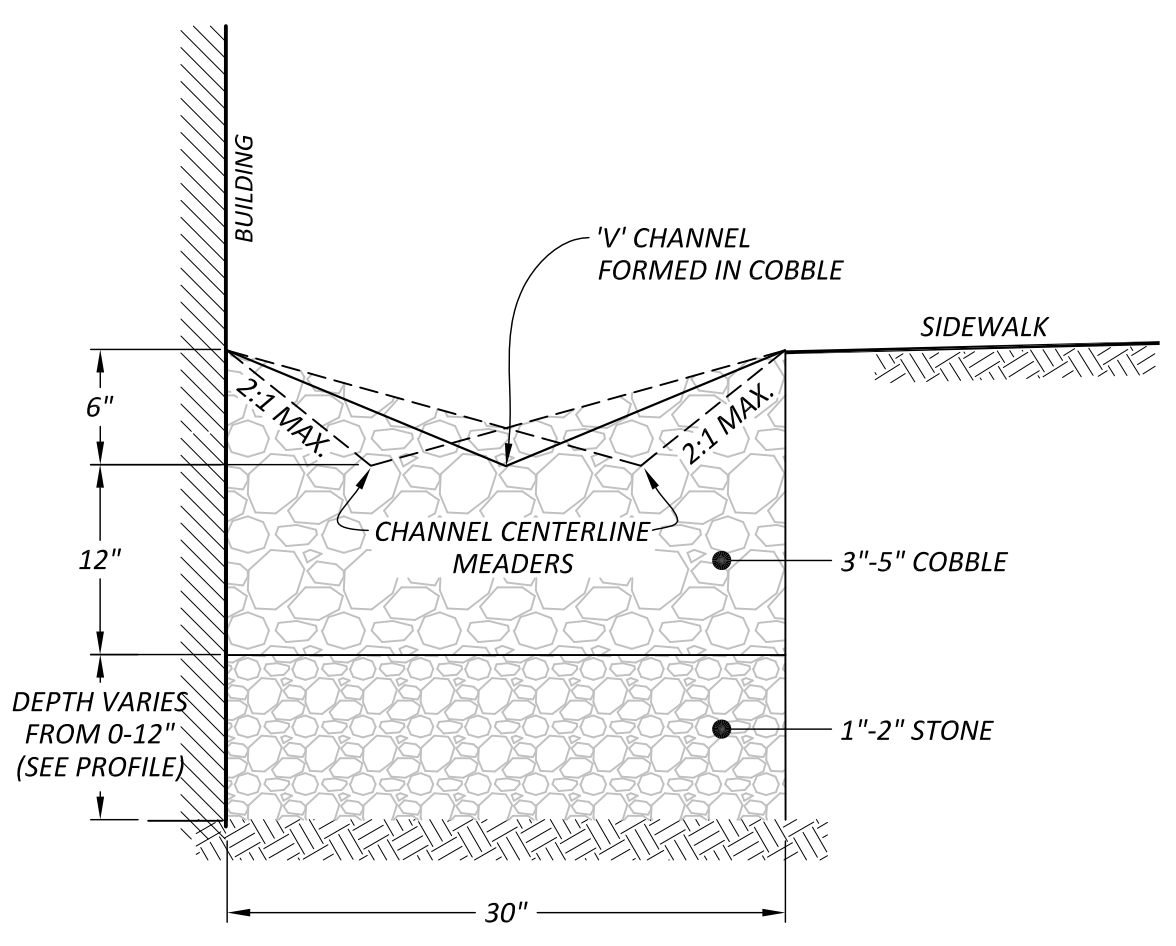
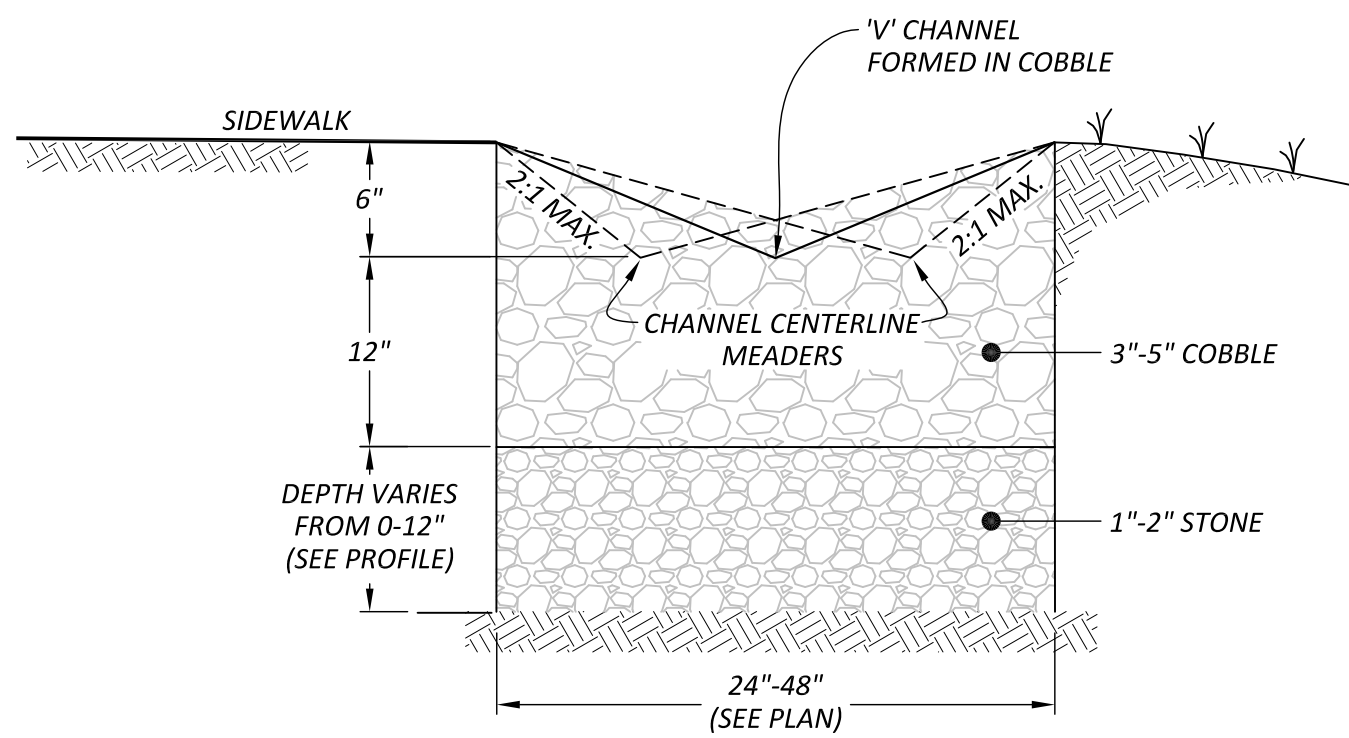
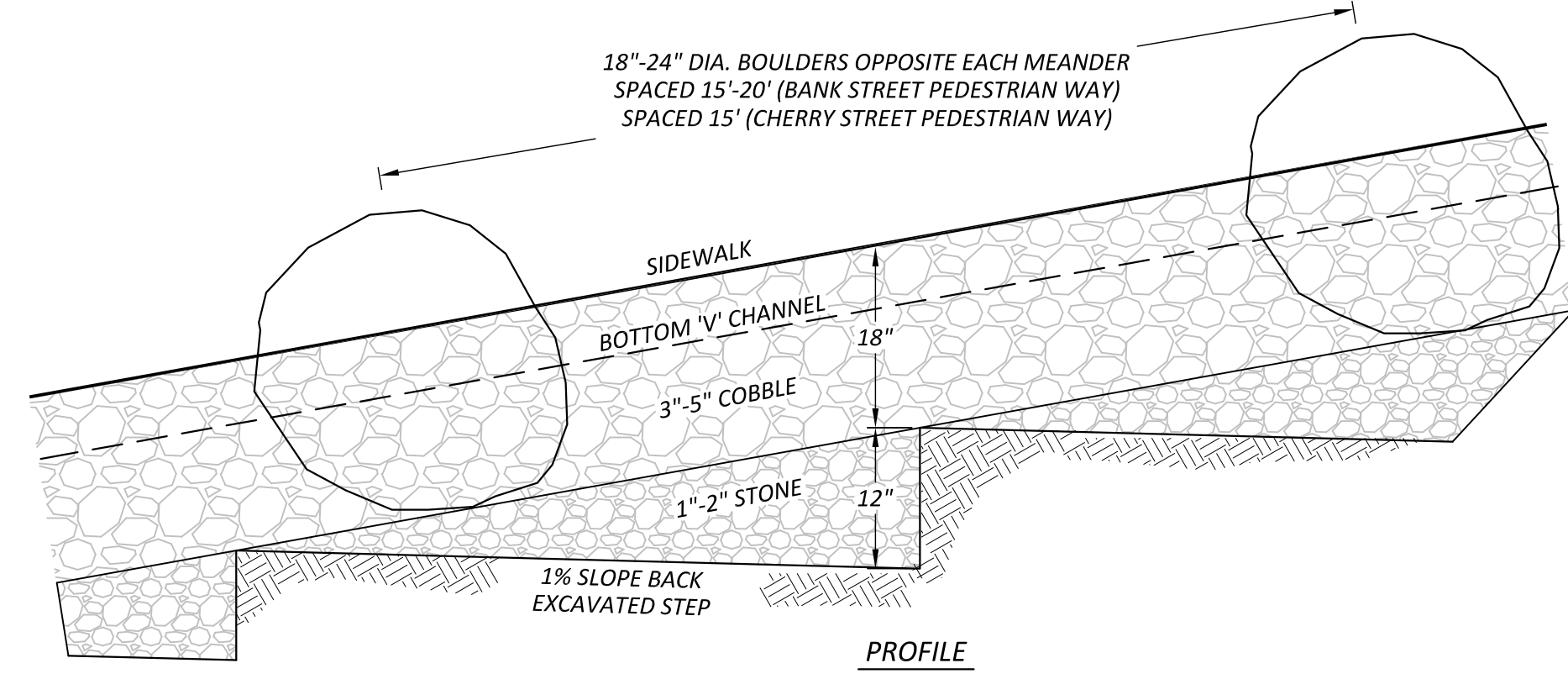
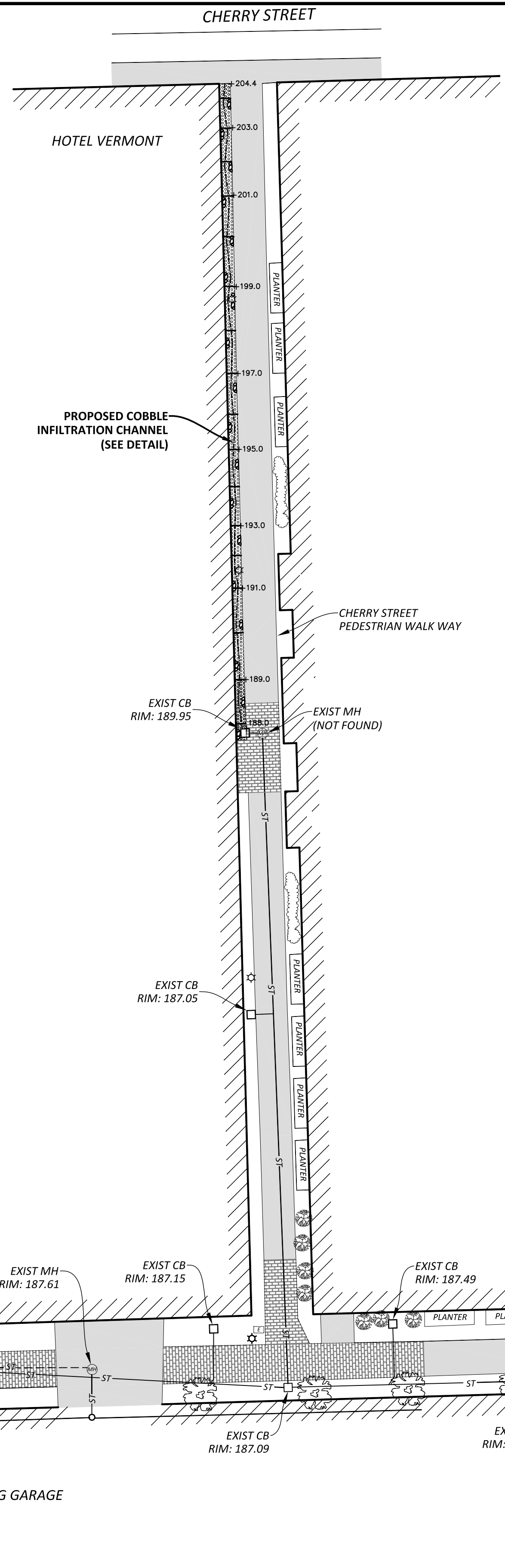
DRAWN BY:	SMS
CHECKED BY:	AT/ATS/SMM
APPROVED BY:	AT
DATE:	12-12-13
SCALE:	NOTED
SHEET:	2 OF 5





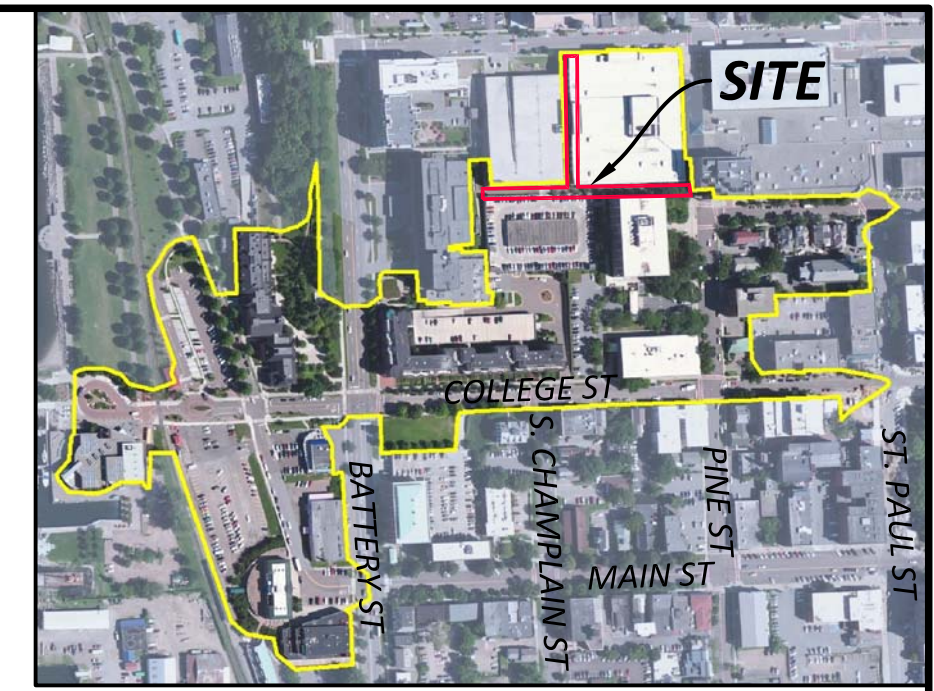
LEGEND

- S SANITARY SEWER
- W WATER LINE
- T UNDERGROUND TELEPHONE
- E UNDERGROUND ELECTRIC
- G GAS LINE
- ST STORM SEWER
- CATCH BASIN
- ⊕ HYDRANT
- ⊕ UTILITY POLE
- ⊕ LIGHT POLE
- +212.8 SPOT ELEVATION
- ⊕ EXISTING TREE



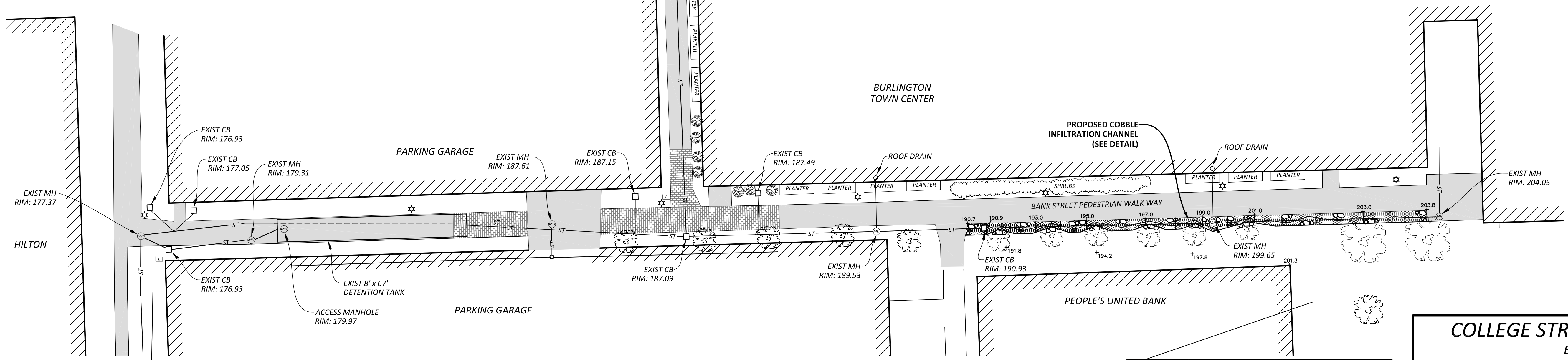
COBBLE INFILTRATION CHANNEL DETAIL

NTS

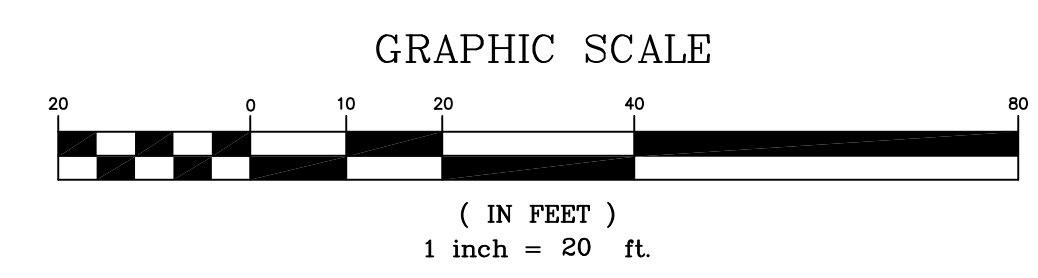


SITE LOCATION

NTS



Soil Boring	Depth Below Ground Surface	Color	Texture and Description
BS #2	0-6"	Very Dark Grayish Brown (10 YR 3/2)	Fine Sandy Loam, loose, roots to 6"
	9-30"	Brown (10 YR 3/4)	Fine Sand, poorly graded, granular, loose
	30-72"	Olive Brown (2.5 Y 4/3)	Fine Sand, poorly graded, granular, loose
	End of Boring		
	45-72"	Infiltration Test Zone	



NOTES

- AGE/QUALITY OF EXISTING STORM INFRASTRUCTURE HAS NOT BEEN COMPREHENSIVELY ASSESSED AND MUST BE VERIFIED.
- EXISTING UTILITY INFORMATION BASED ON HISTORIC PLANS AND SITE SURVEY BY THIS OFFICE ON 11-13-13 AND 12-3-13. LOCATIONS AND DEPTH OF UNDERGROUND UTILITIES TO BE FIELD CONFIRMED.

Soil Boring	Depth Below Ground Surface	Color	Texture and Description
BS #4	0-10"	Very Dark Grayish Brown (10 YR 3/2)	Fine Sandy Loam, loose, roots
	10-17"	Reddish Brown (2.5 YR 4/3)	Fine Sand, well graded, granular, loose
	17-48"	Reddish Brown (2.5 YR 4/3)	Fine Sand, light iron staining
	48-76"	Dark Reddish Brown (2.5 YR 5/3)	Fine Sand, no iron staining, firming
	End of boring		
Infiltration Test Zone			

DRAFT

COLLEGE STREET STORM DRAIN SYSTEM
BURLINGTON, VERMONT

BANK ST. & CHERRY ST. PEDESTRIAN WALK WAYS



Stormwater Management | Water Quality | Erosion Control
430 Shelburne Road P.O. Box 4413
Burlington, VT 05406
Mobile: 802.922.4871 | Main: 802.497.2367
www.watershedca.com

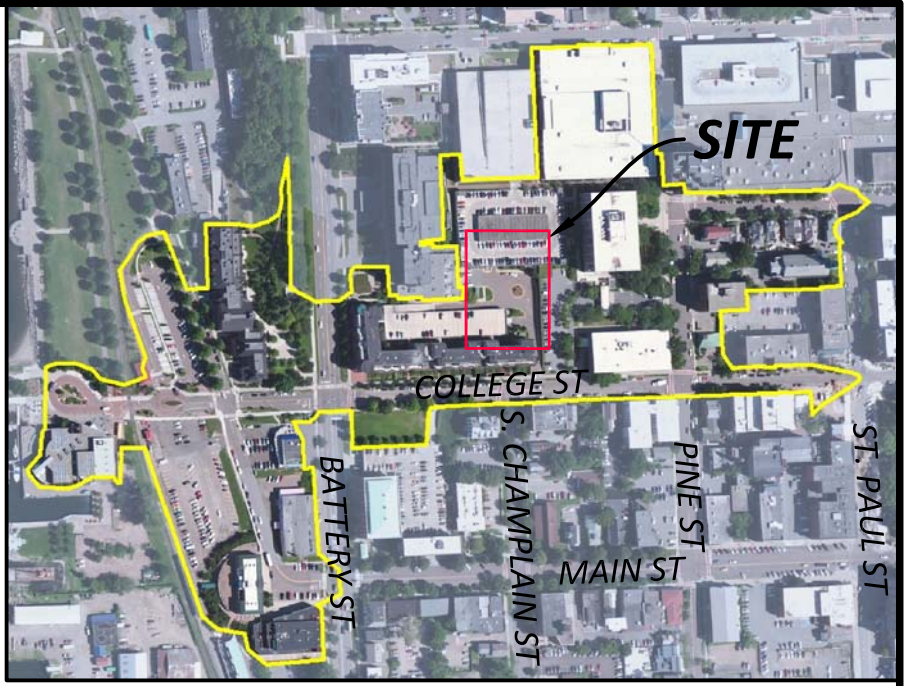
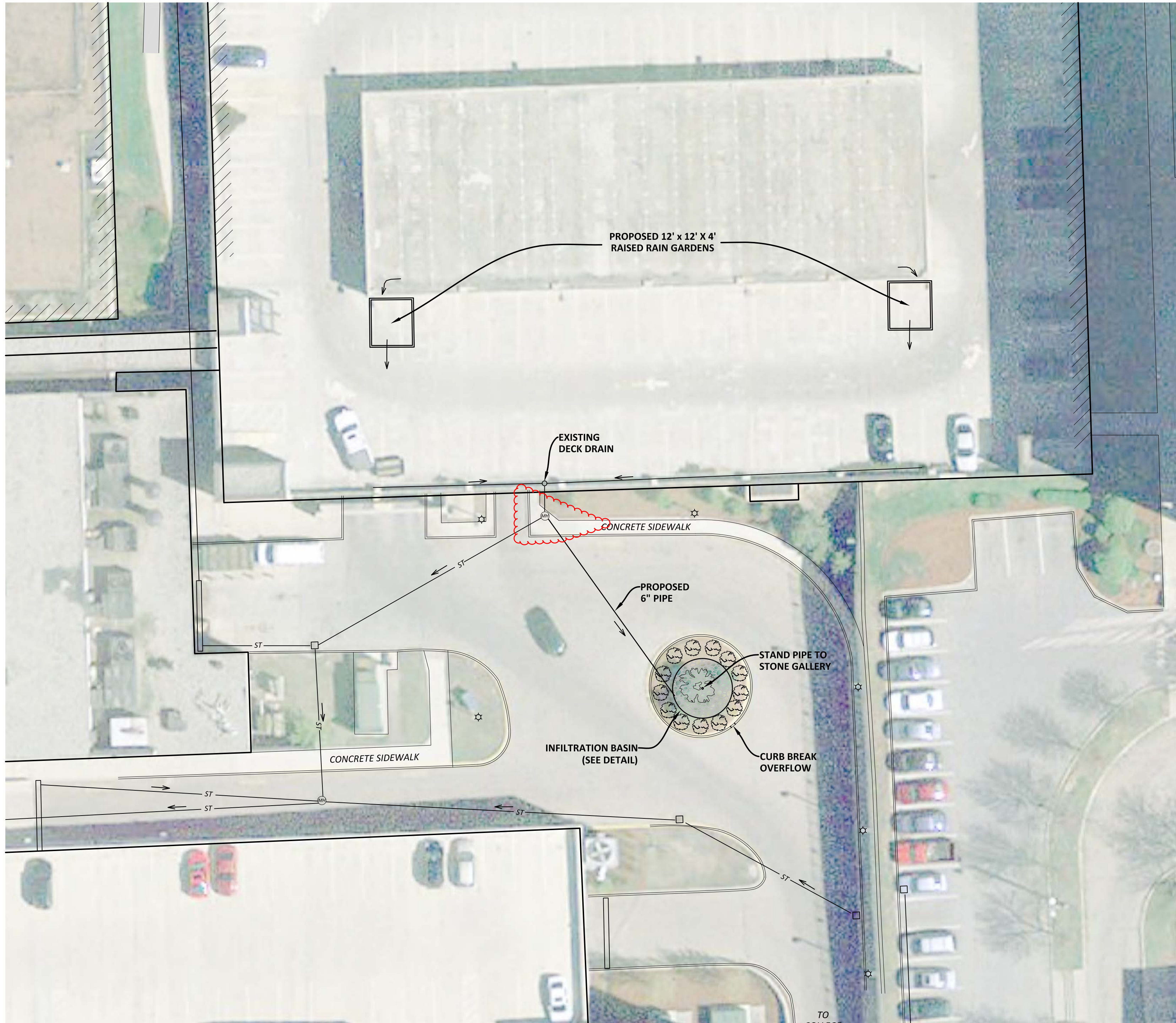
DRAWN BY:	SMS
CHECKED BY:	AT/ATS/SMM
APPROVED BY:	AT
DATE:	2-19-14
SCALE:	NOTED
SHEET:	3 OF 5



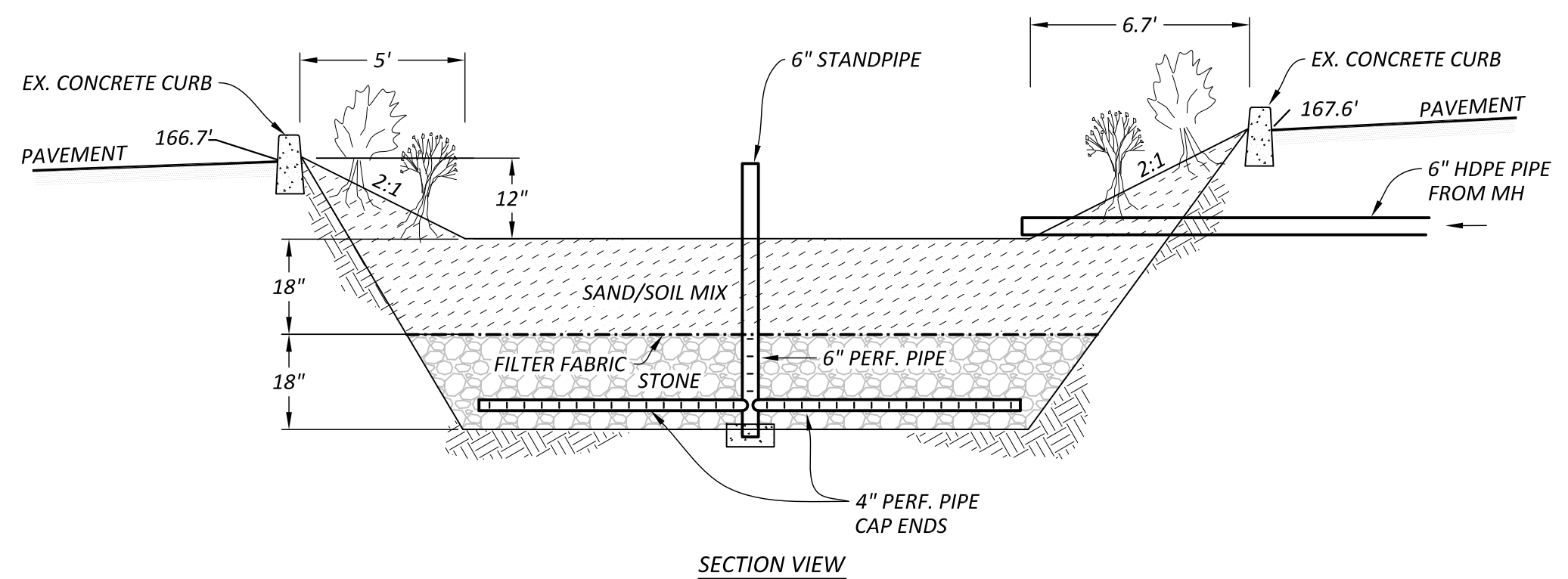
P.O. Box 4081 Burlington, VT 05406
P: (802) 489-5214
www.legvl.com



POST OFFICE BOX 5517
BURLINGTON, VERMONT
802-864-8100



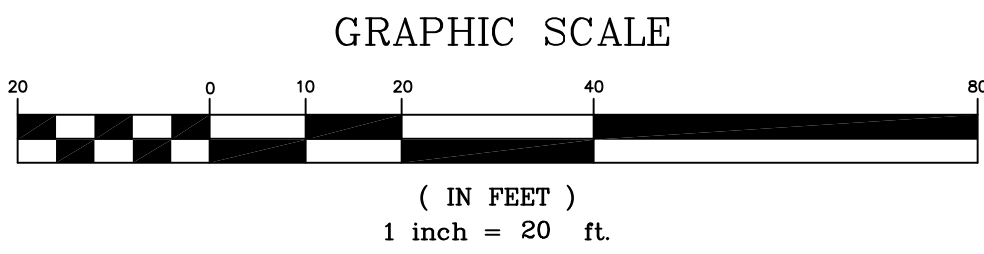
SITE LOCATION
NTS



INFILTRATION BASIN DETAIL
NTS

NOTES

1. AGE/QUALITY OF EXISTING STORM INFRASTRUCTURE HAS NOT BEEN COMPREHENSIVELY ASSESSED AND MUST BE VERIFIED.
2. EXISTING UTILITY INFORMATION BASED ON HISTORIC PLANS AND SITE SURVEY BY THIS OFFICE ON 12/5/13. LOCATIONS AND DEPTH OF UNDERGROUND UTILITIES TO BE FIELD CONFIRMED.



LEGEND

- S — SANITARY SEWER
- W — WATER LINE
- T — UNDERGROUND TELEPHONE
- E — UNDERGROUND ELECTRIC
- G — GAS LINE
- ST — STORM SEWER
- CATCH BASIN
- ⊕ HYDRANT
- ⊙ UTILITY POLE
- ☆ LIGHT POLE
- *212.8 SPOT ELEVATION
- ⊙ EXISTING TREE
- ⊙ PROPOSED PLANTING

DRAFT

COLLEGE STREET STORM DRAIN SYSTEM
BURLINGTON, VERMONT

HILTON LOADING CIRCLE STORMWATER IMPROVEMENT PLAN



Stormwater Management | Water Quality | Erosion Control
430 Shelburne Road P.O. Box 4413
Burlington, VT 05406
Mobile: 802.922.4871 | Main: 802.497.2367
www.watershedca.com

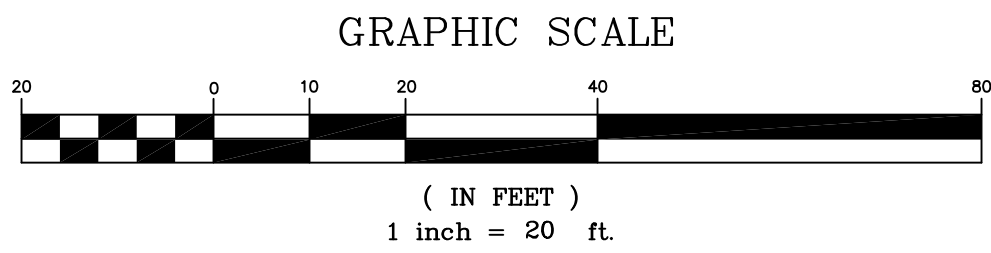
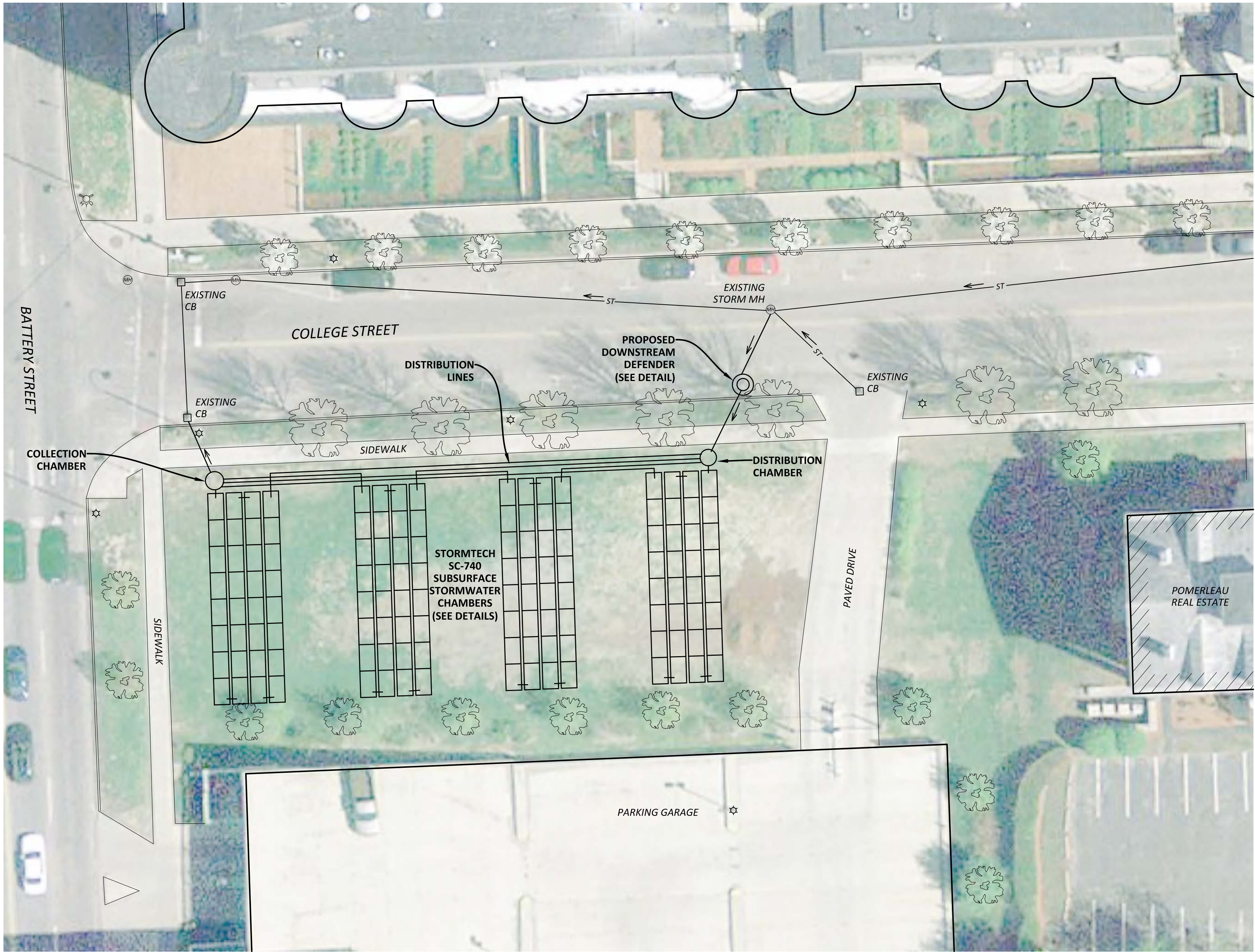
DRAWN BY:	SMS
CHECKED BY:	AT/ATS/SMM
APPROVED BY:	AT
DATE:	2-21-14
SCALE:	NOTED
SHEET:	4 OF 5



P.O. Box 4081 Burlington, VT 05406
P: (802) 489-5214
www.legvl.com



POST OFFICE BOX 5517
BURLINGTON, VERMONT
802-864-8100

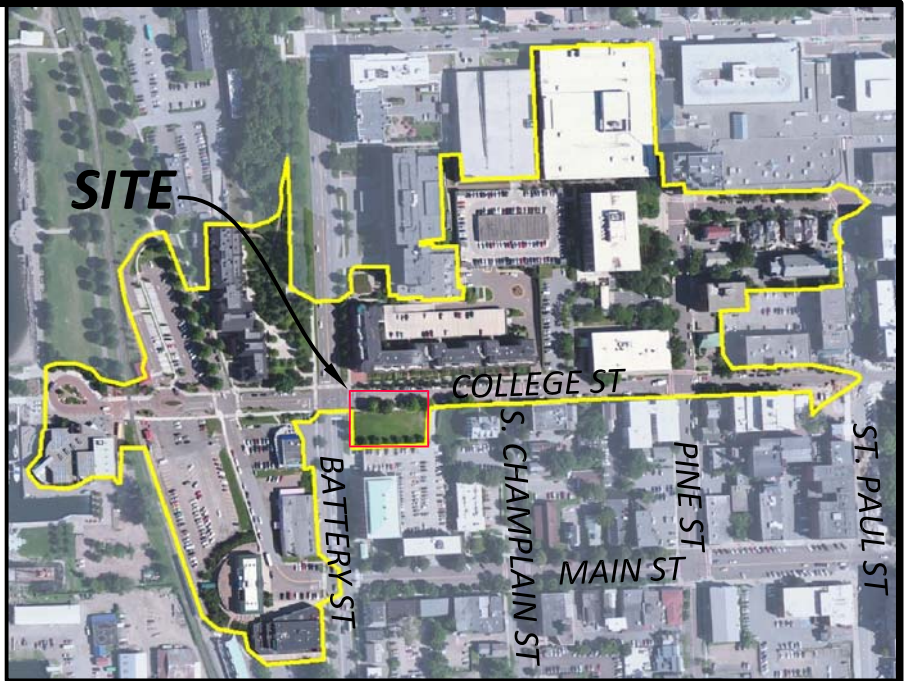


LEGEND

- S SANITARY SEWER
- W WATER LINE
- T UNDERGROUND TELEPHONE
- E UNDERGROUND ELECTRIC
- G GAS LINE
- ST STORM SEWER
- CATCH BASIN
- HYDRANT
- UTILITY POLE
- ☆ LIGHT POLE
- EXISTING TREE

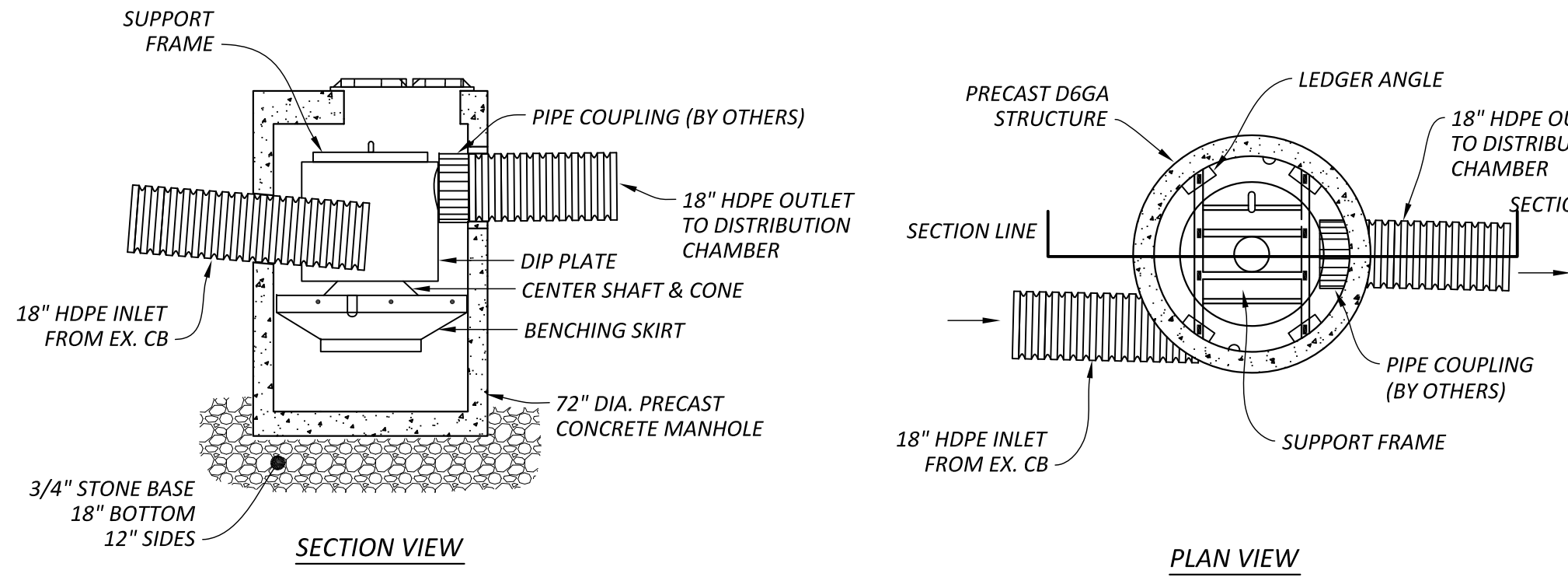
NOTES

1. AGE/QUALITY OF EXISTING STORM INFRASTRUCTURE HAS NOT BEEN COMPREHENSIVELY ASSESSED AND MUST BE VERIFIED.
2. EXISTING UTILITY INFORMATION BASED ON HISTORIC PLANS AND SITE SURVEY BY THIS OFFICE. LOCATIONS AND DEPTH OF UNDERGROUND UTILITIES TO BE FIELD CONFIRMED.



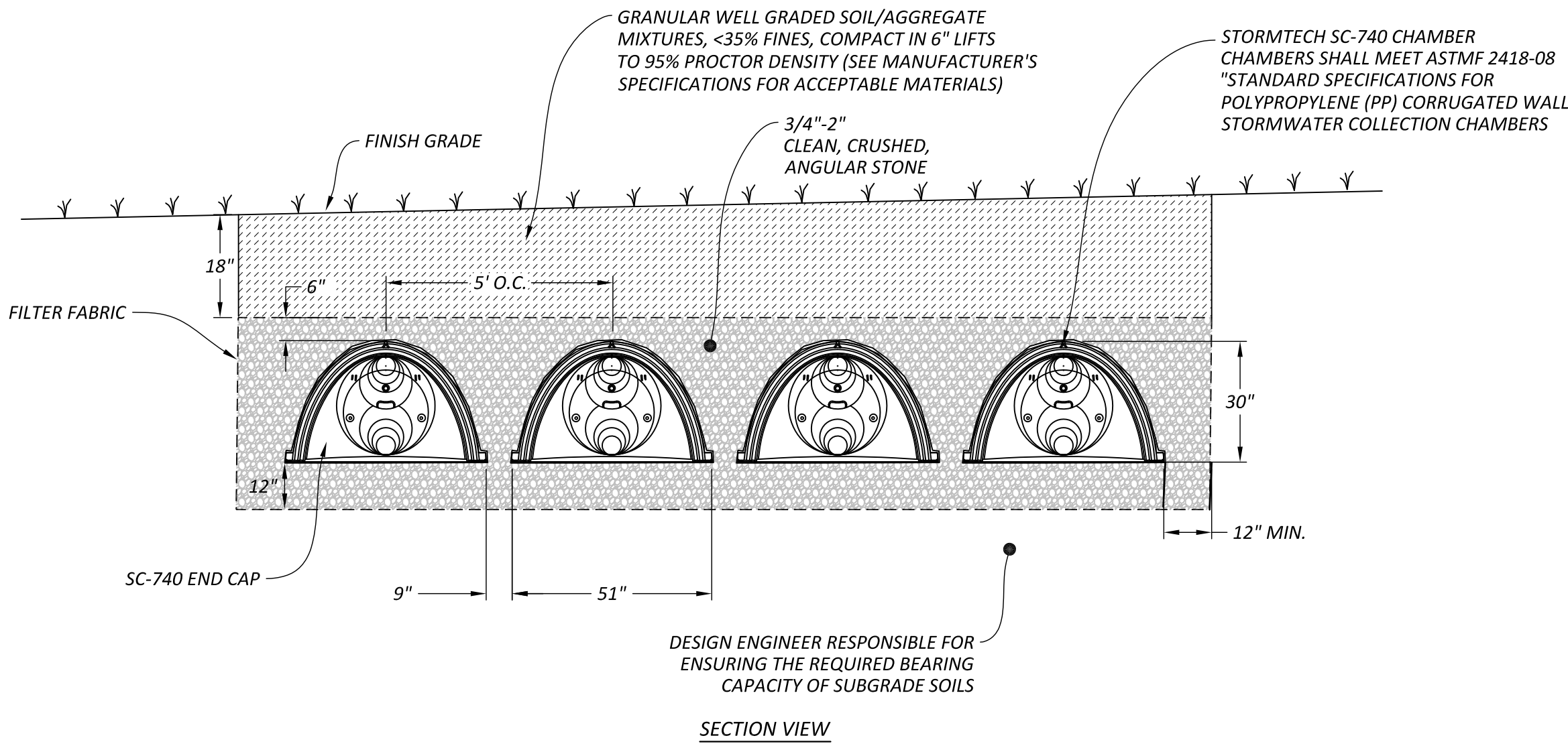
SITE LOCATION

NTS



HYDRO INT'L MODEL D6GA DOWNSTREAM DEFENDER DETAIL

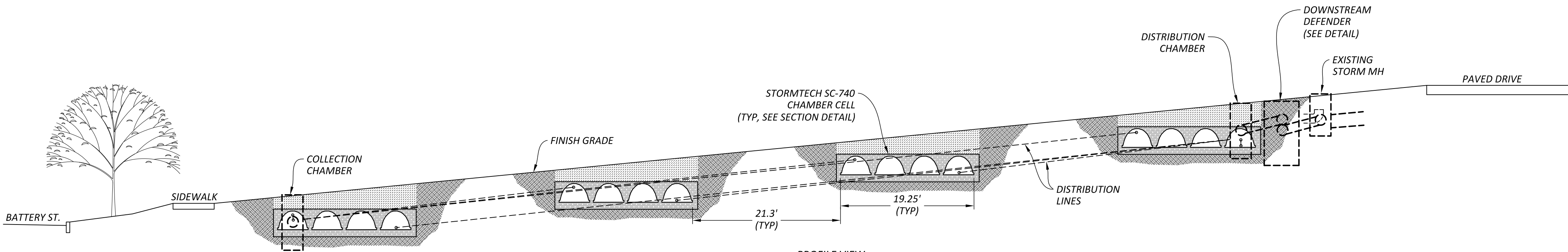
NTS



SUBSURFACE STORMWATER CHAMBER CELL DETAIL

NTS

DRAFT



SUBSURFACE STORMWATER CHAMBER SYSTEM DETAIL

NTS

COLLEGE STREET STORM DRAIN SYSTEM
BURLINGTON, VERMONT

ICV PROPERTY STORMWATER IMPROVEMENT PLAN



Stormwater Management | Water Quality | Erosion Control
430 Shelburne Road P.O. Box 4413
Burlington, VT 05406
Mobile: 802.922.4871 | Main: 802.497.2367
www.watershedca.com

DRAWN BY:	SMS
CHECKED BY:	AT/ATS/SMM
APPROVED BY:	AT
DATE:	2-21-14
SCALE:	NOTED
SHEET:	5 OF 5



SMM
ENVIRONMENTAL ENGINEERING
SCOTT MICHAEL MAPES
P.O. Box 4081 Burlington, VT 05406
P: (802) 489-5214
www.legyl.com
802-864-8100