

CITY OF BURLINGTON, VERMONT

MAIN STREET AND SOUTH WINOOSKI AVENUE STORMWATER IMPROVEMENTS

MARCH, 2014

AE
Aldrich + Elliott
WATER RESOURCE ENGINEERS
6 Market Place, Suite 2
Essex Jct., VT 05452
P: 802.879.7733
AEngineers.com



MAYOR

HON. MIRO WEINBERGER

PUBLIC WORKS COMMISSIONERS

NATHAN AVERY, CHAIR
MARK PORTER, VICE CHAIR
ROBERT ALBERRY
TIKI ARCHAMBEAU
ASA HOPKINS
SULVEIG OVERBY
JEFF PADGETT

DIRECTOR OF PUBLIC WORKS

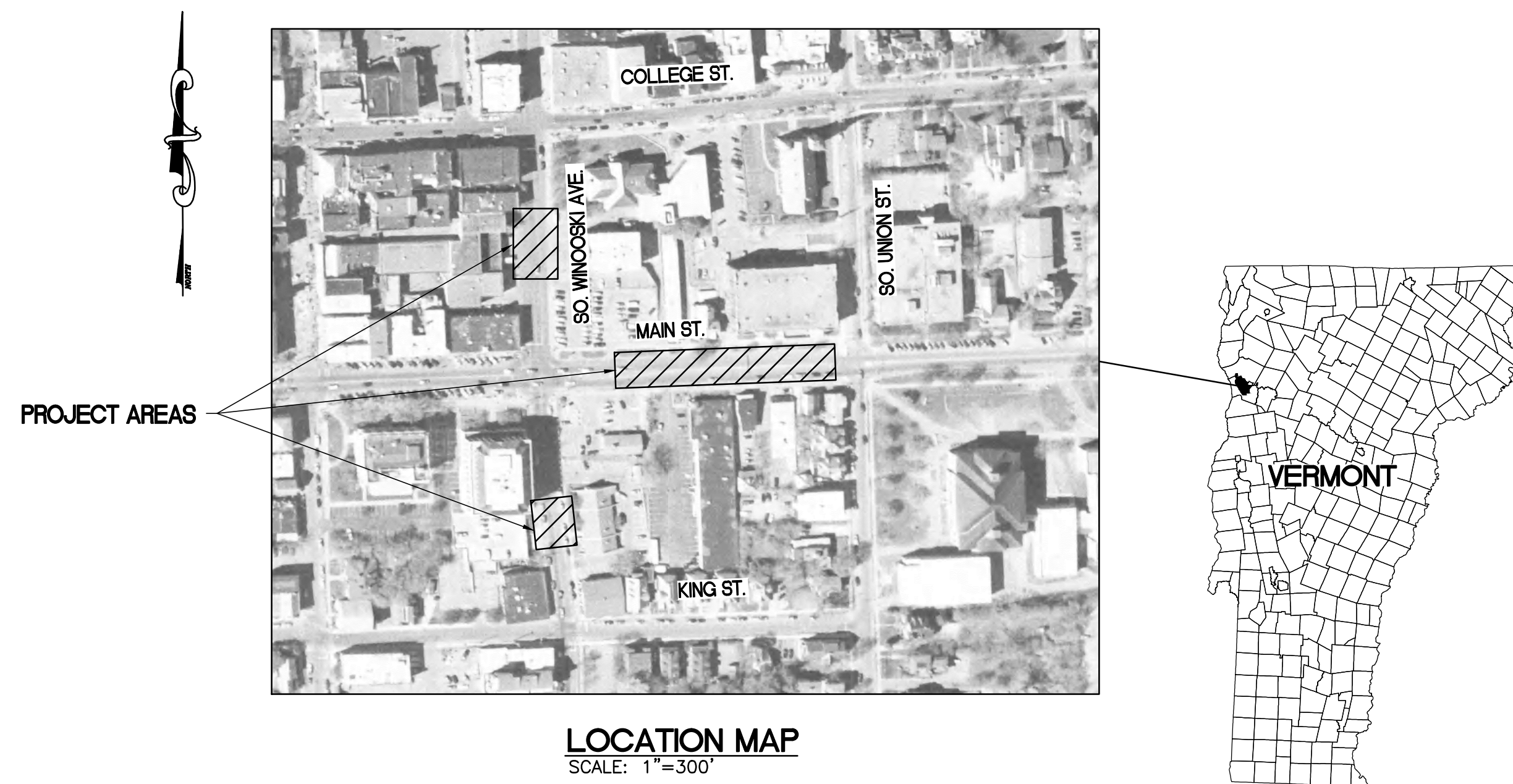
CHAPIN SPENCER

CITY ENGINEER

NORM BALDWIN, PE

WATER RESOURCES

LAURIE ADAMS
MEGAN MOIR, CPESC, CPWQ
STEVE ROY, PE



LOCATION MAP
SCALE: 1"=300'

INDEX OF DRAWINGS

DRAWING NO.	TITLE
T	TITLE SHEET AND INDEX OF DRAWINGS
1	LEGEND AND OVERALL PLAN
2	MAIN STREET
3	SOUTH WINOOSKI AT FIREHOUSE
4	SOUTH WINOOSKI AT COURTHOUSE
5	DETAILS

4/14/14

FINAL

CHECKED	DESCRIPTION	DATE	NO.

CITY OF
BURLINGTON,
VERMONT

MAIN STREET AND
SOUTH WINOOSKI
AVENUE
STORMWATER
IMPROVEMENTS

TITLE SHEET AND
INDEX OF
DRAWINGS

DESIGNED CM	PROJECT NO. 13059
DRAWN JEB	DRAWING NO. T
CHECKED JJD	
DATE MAR. 2014	

LEGEND

EXISTING

PLAN

PROPERTY LINE	— PL — — — — PL — — — —	
RIGHT-OF-WAY	— ROW — — — — ROW — — — —	
CONTOUR	— — — — — 360 — — — — —	
WATERLINE	— — — — — W — — — — —	
TELEPHONE CONDUIT (UNDERGROUND)	— — — — — UGT — — — — —	
ELECTRICAL CONDUIT (UNDERGROUND)	— — — — — UGE — — — — —	
OVERHEAD POWER	— — — — — OHP — — — — —	
SANITARY SEWER	- - - - - S - - - - -	
STORMDRAIN	- - - - - SD - - - - -	
UNDERGROUND GAS	- - - - - GAS - - - - -	
CULVERT	- - - - -	
TREE/BRUSH LINE	- - - - -	
GRAVEL ROAD OR DRIVE	- - - - -	
BITUMINOUS PAVEMENT	- - - - -	
SIDEWALK-CONCRETE	- - - - -	
CURB	- - - - -	
TELEPHONE POLE	⊕	
POWER POLE	⊕	
COMBINATION POLE	⊕	
GUY WIRE	— — — — —	
MANHOLE	⊙	
CATCH BASIN	⊕	
HYDRANT	⊕	
CURB STOP	⊕	
VALVE	⊕	
SIGN	⊕	
DECIDUOUS TREE	⊕	
CONIFEROUS TREE	⊕	
STUMP	⊕	
SURVEY POINT SET	⊕	
BENCHMARK	⊕	
LIGHT POLE	⊕	
R.O.W. MONUMENT	⊕	
ELECTRICAL PULLBOX	⊕	
MAILBOX	⊕	

PROFILE

GROUND SURFACE	— — — — —
--------------------------	-----------

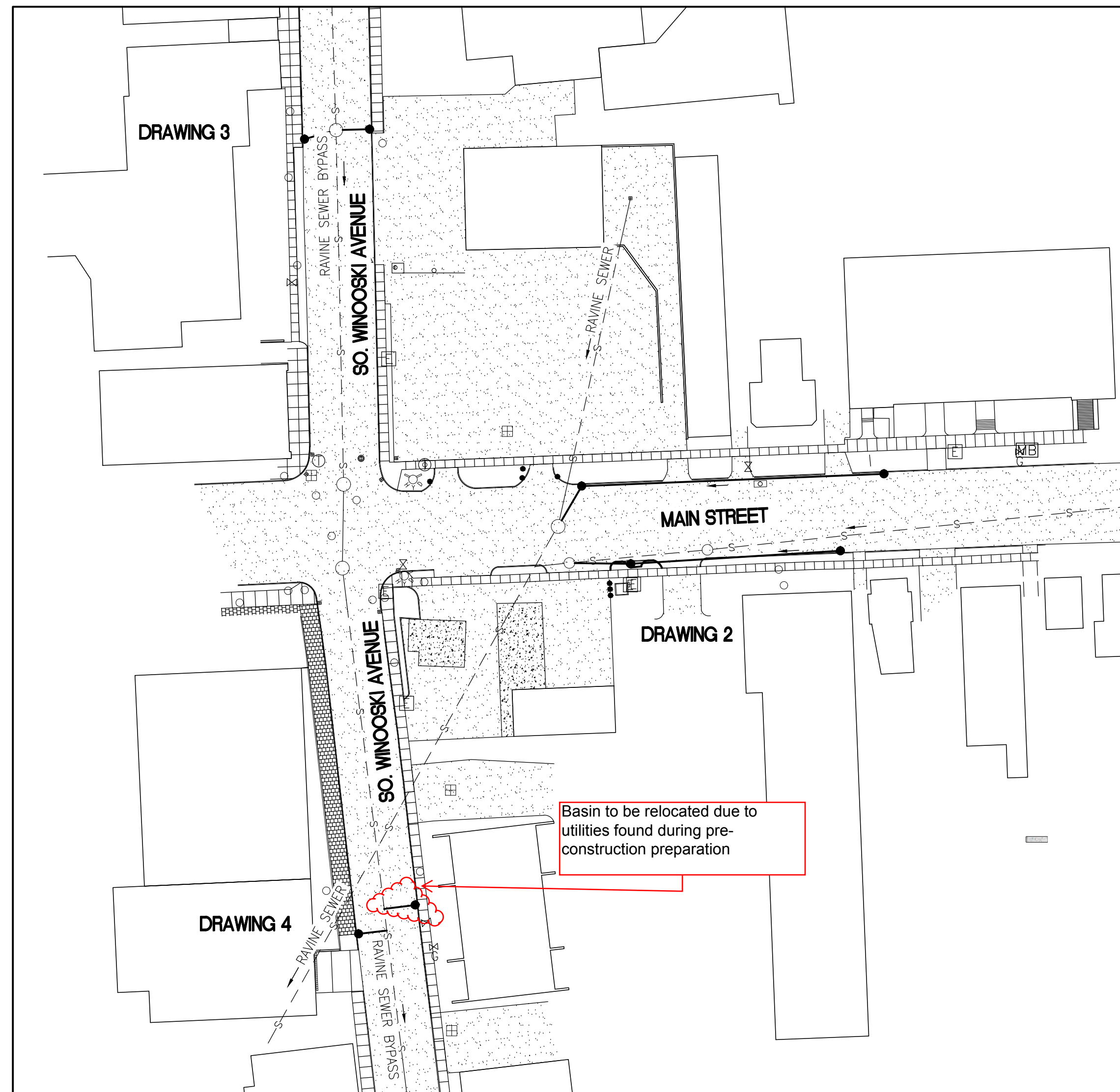
PROPOSED

PLAN

STORMDRAIN	— — — — — SD — — — — —
CONCRETE CURB	— — — — —
CATCH BASIN	⊕
TEST PIT	⊕

PROFILE

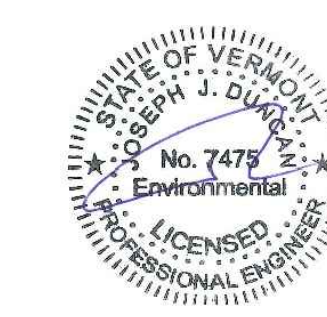
PIPELINE	— — — — —
INSULATION OVER PIPE	— — — — —



OVERALL SITE PLAN
SCALE: 1"=60'

4/14/14

FINAL



CHECKED	DESCRIPTION	DATE	No.

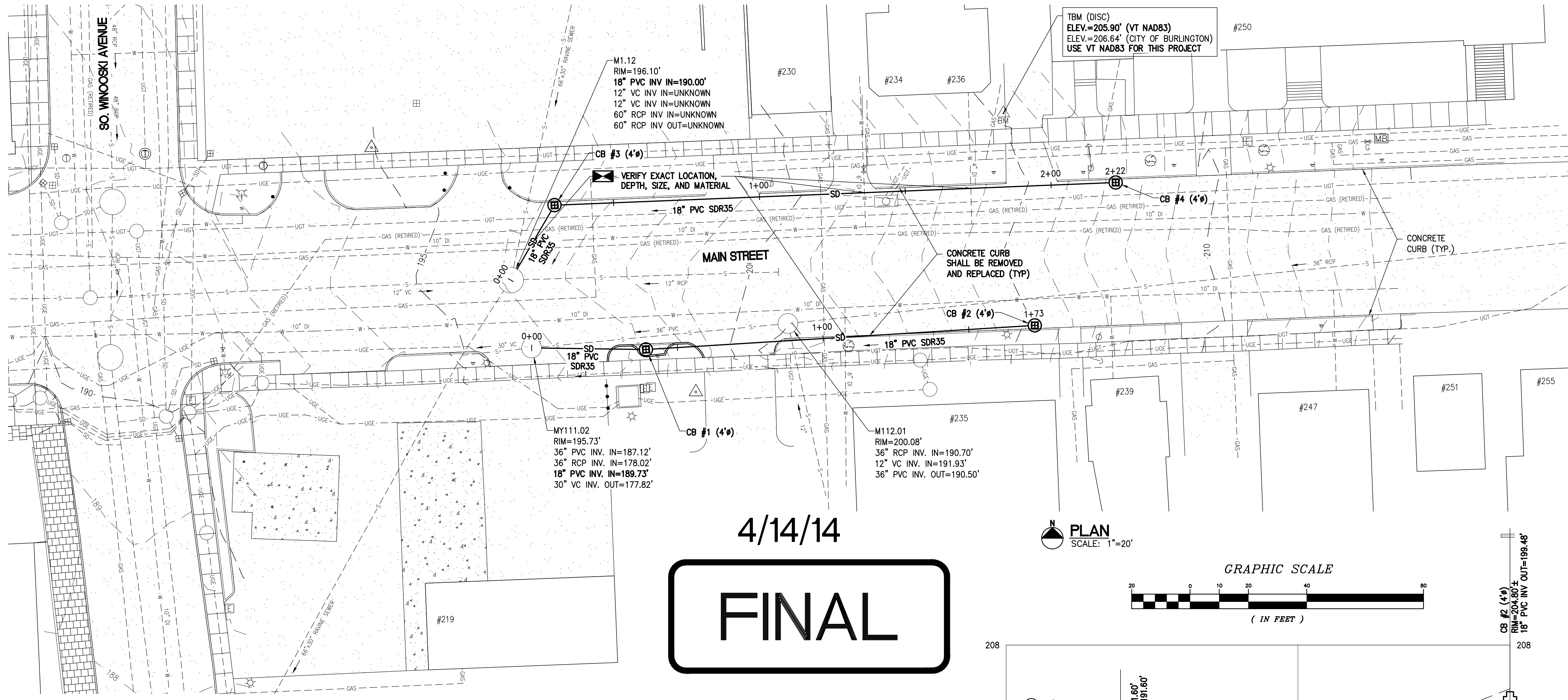
CITY OF BURLINGTON, VERMONT

MAIN STREET AND SOUTH WINOOSKI AVENUE STORMWATER IMPROVEMENTS

LEGEND AND OVERALL PLAN

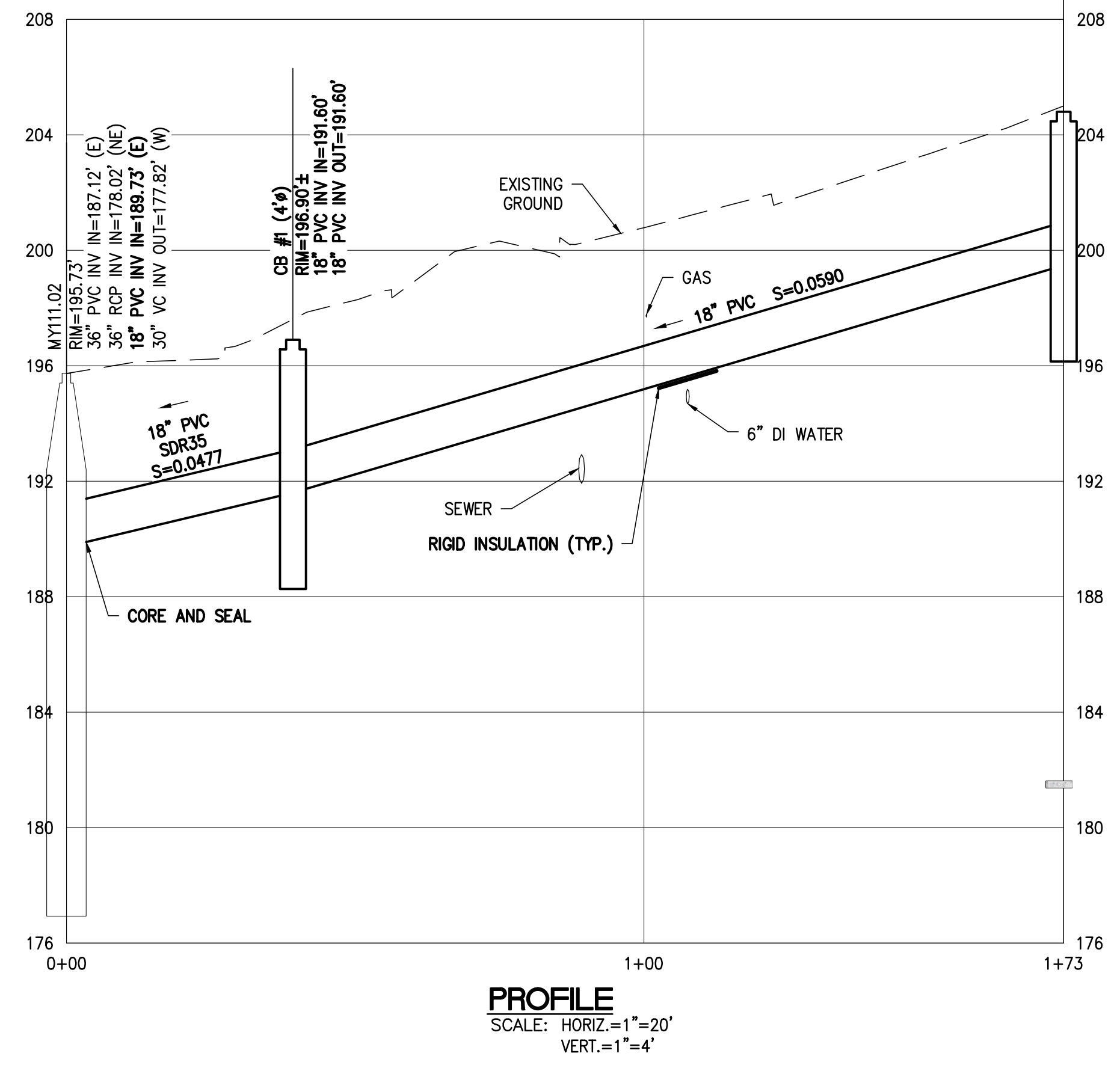
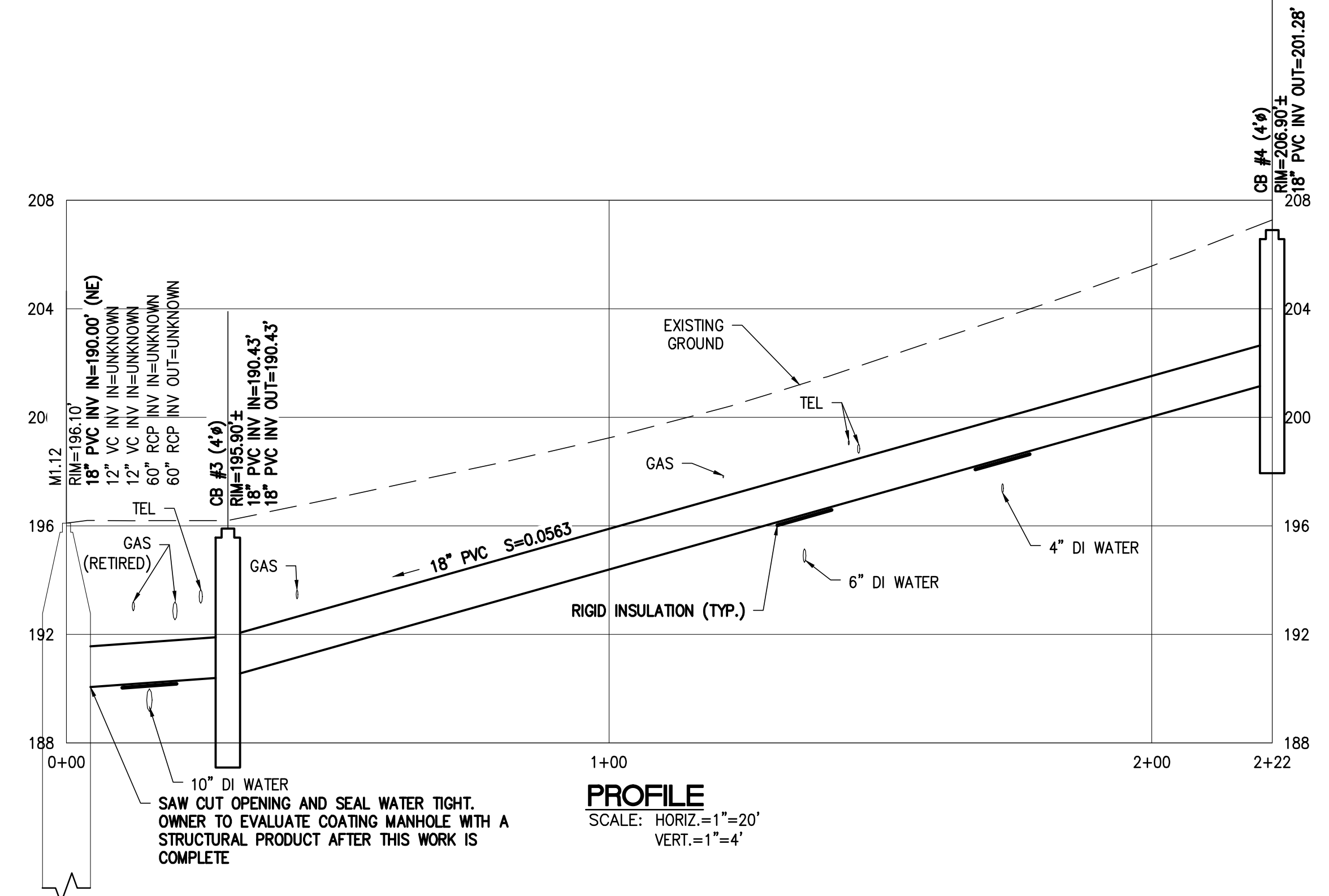
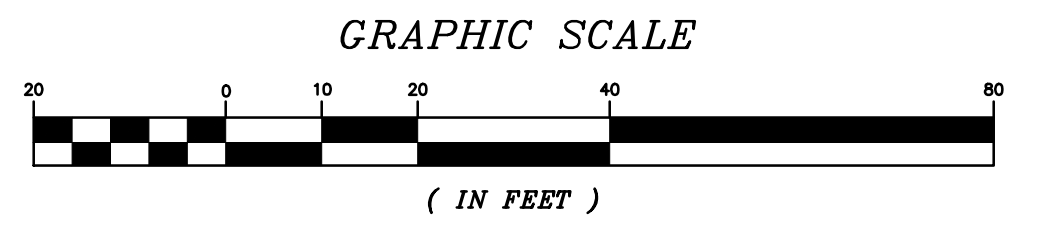
DESIGNED CM	PROJECT NO. 13059
DRAWN JEB	DRAWING NO. 1
CHECKED JJD	
DATE MAR. 2014	

Y:\13059-BURLINGTON\13059-1.dwg, 4/17/2014 12:41:56 PM, jeff16G



4/14/14
FINAL

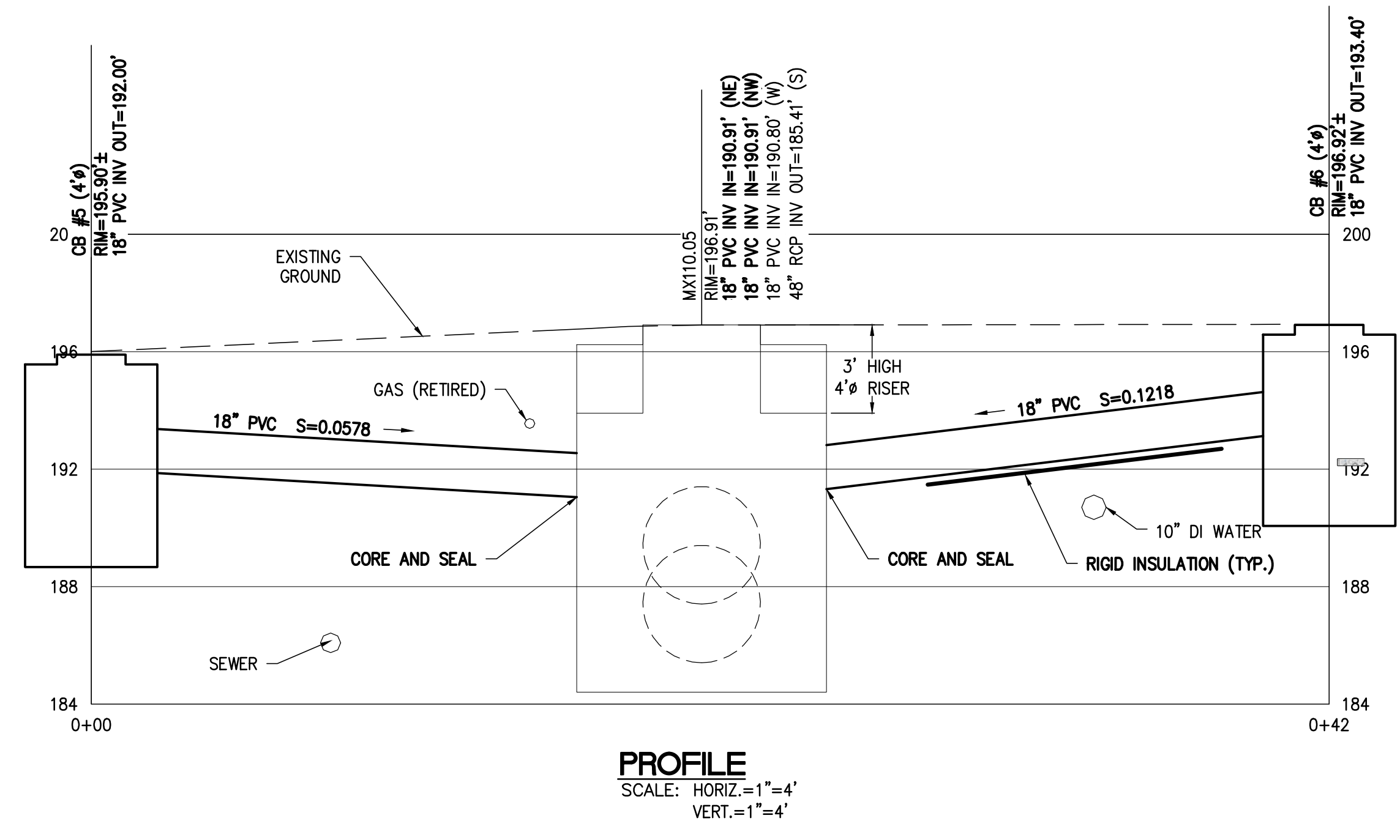
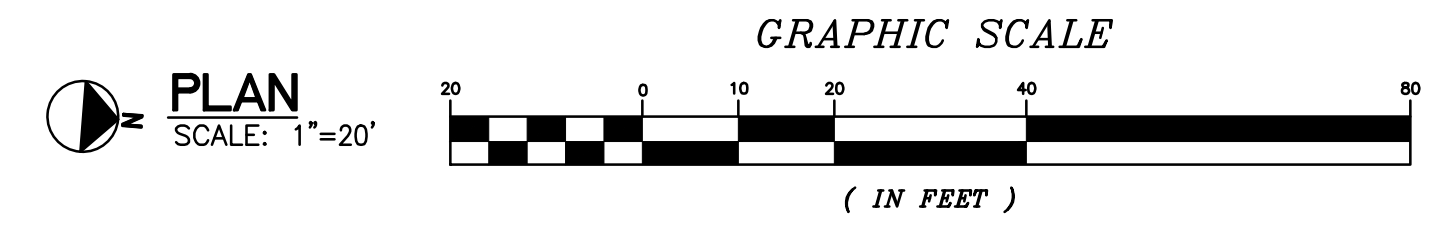
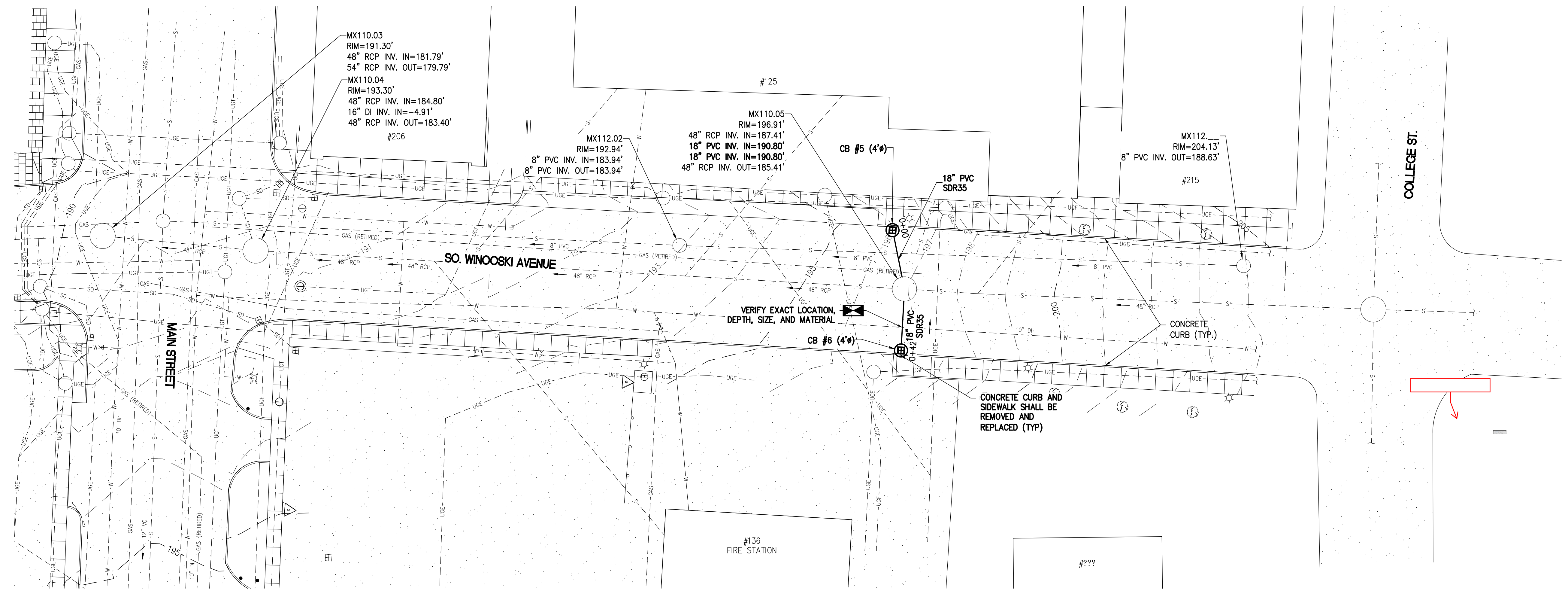
PLAN
 SCALE: 1"=20'



CHECKED	DESCRIPTION	DATE	NO.

CITY OF BURLINGTON, VERMONT
 MAIN STREET AND SOUTH WINOOSKI AVENUE
 STORMWATER IMPROVEMENTS

DESIGNED CM		PROJECT NO. 13059
DRAWN JEB		DRAWING NO. 2
CHECKED JJD		
DATE MAR. 2014		



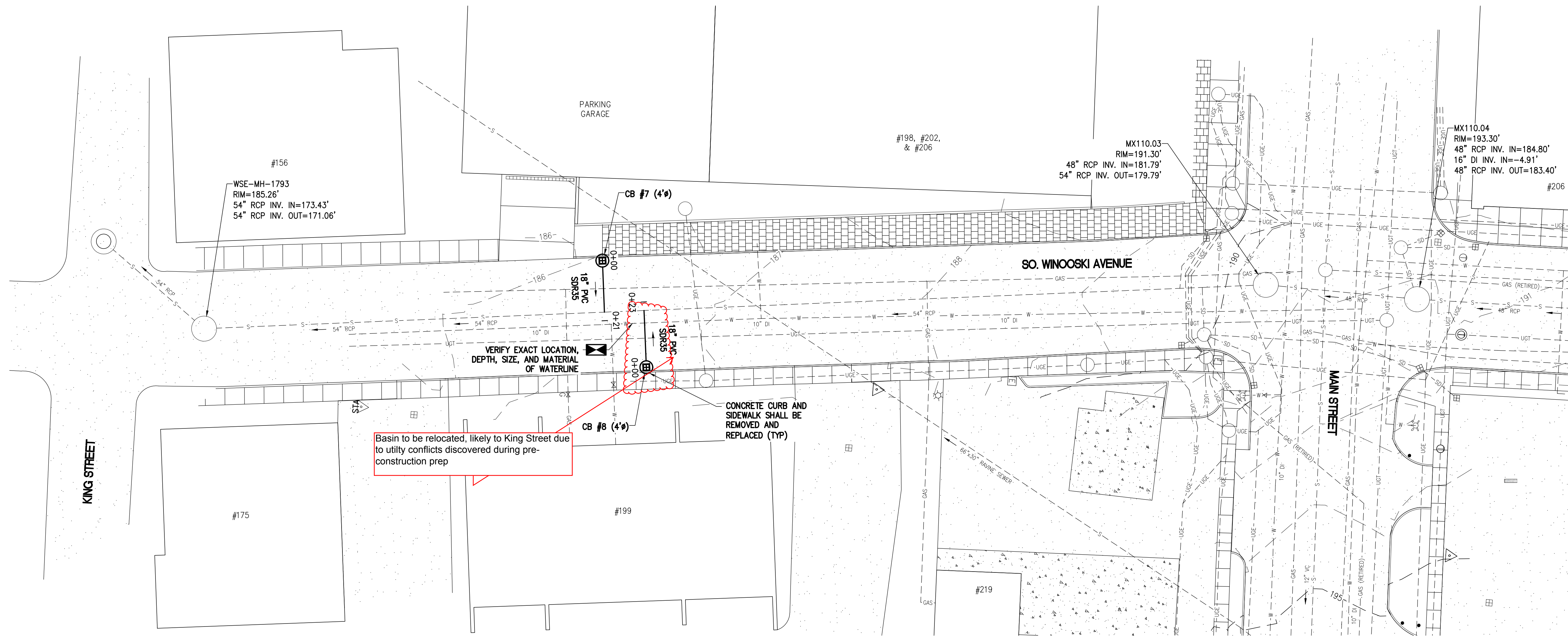
4/14/14
FINAL

CHECKED	DESCRIPTION	DATE	No.

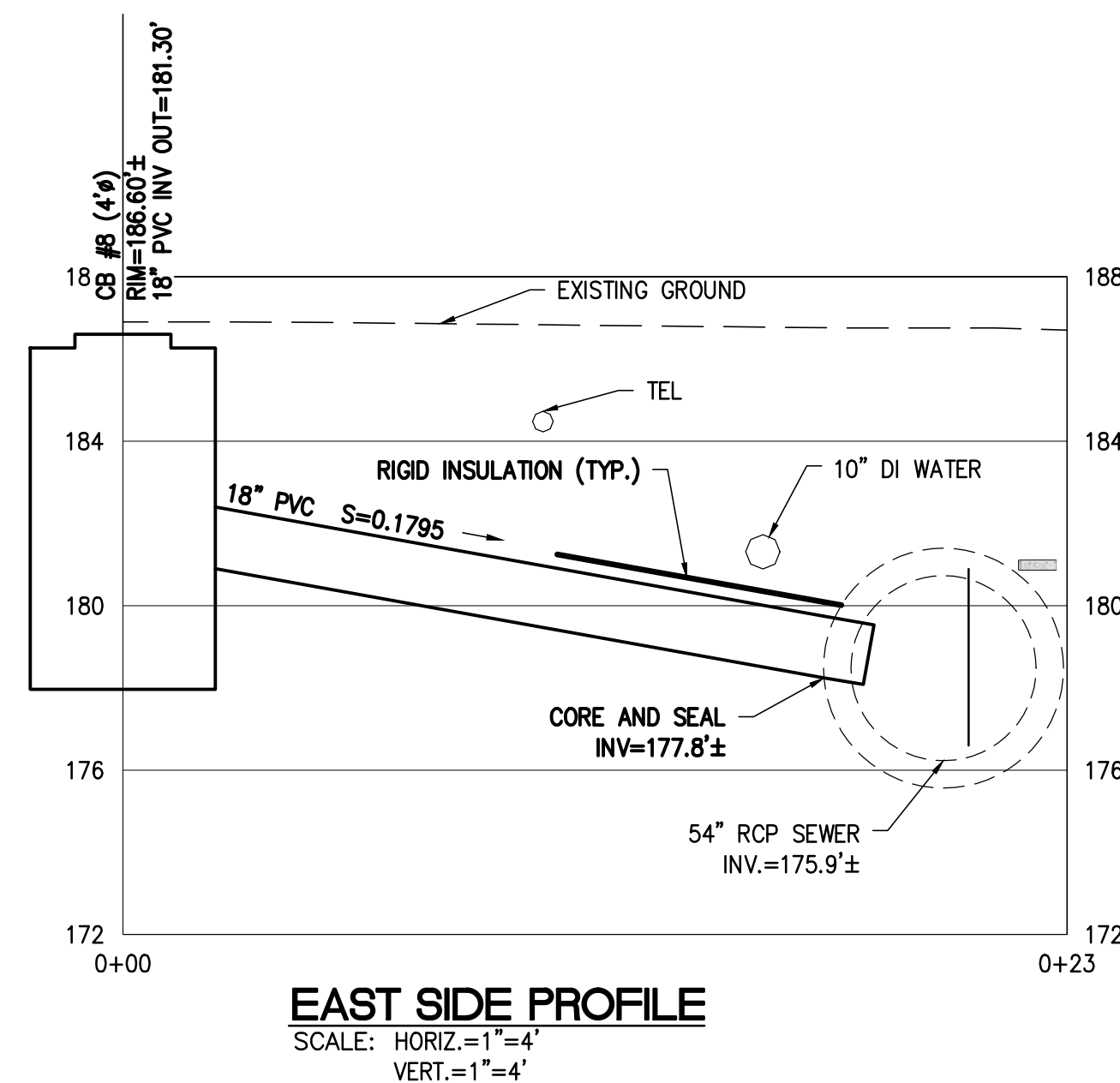
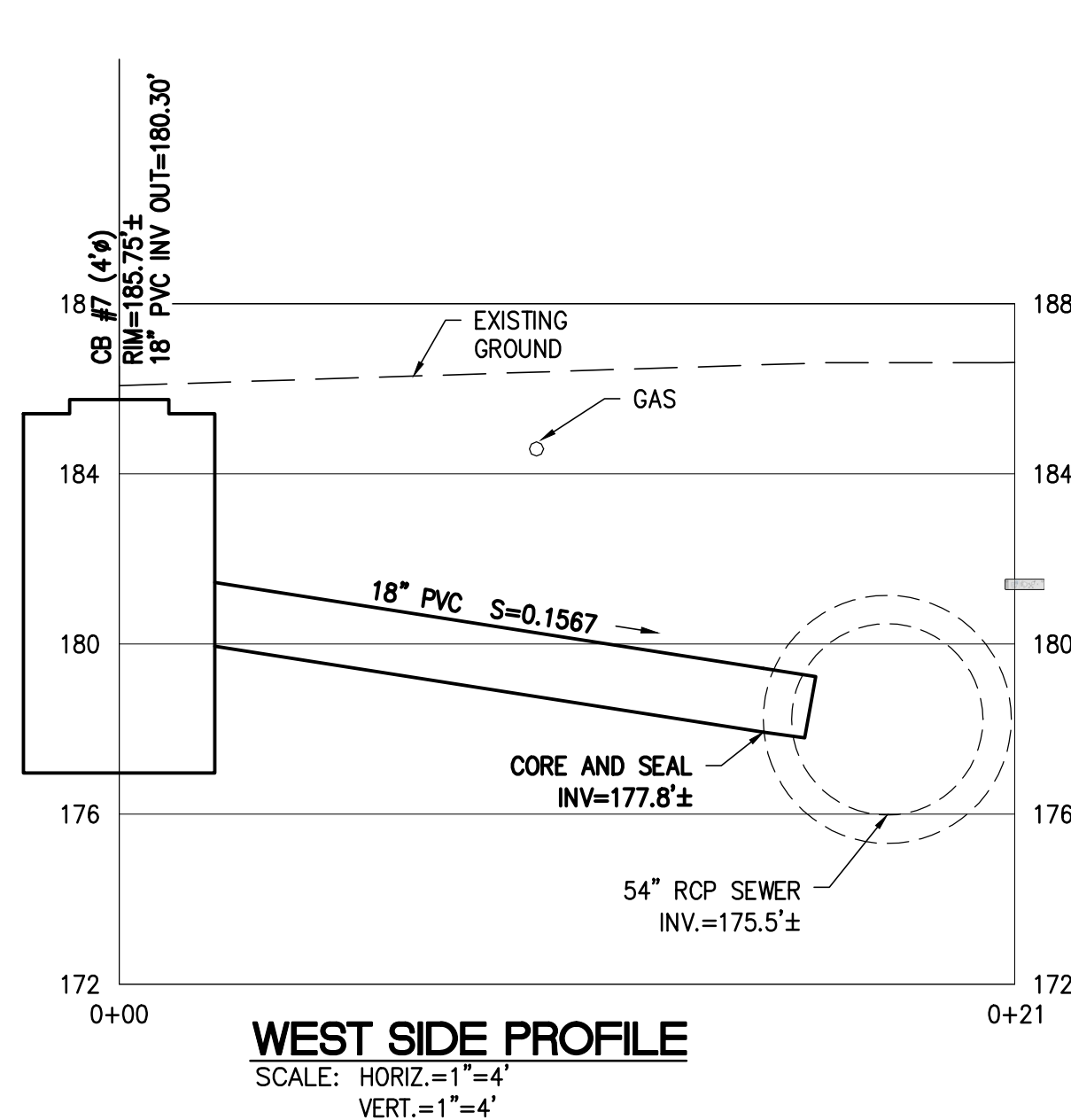
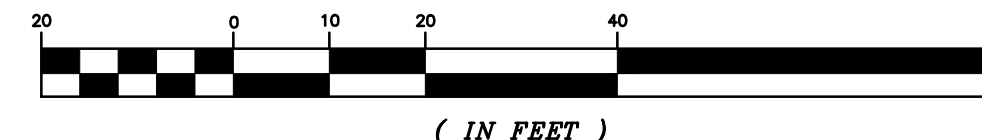
CITY OF
 BURLINGTON,
 VERMONT
 MAIN STREET AND
 SOUTH WINOOSKI
 AVENUE
 STORMWATER
 IMPROVEMENTS

SOUTH
 WINOOSKI AVENUE
 AT
 FIREHOUSE

DESIGNED CM	PROJECT NO. 13059
DRAWN JEB	DRAWING NO. 3
CHECKED JJD	
DATE MAR. 2014	



PLAN
SCALE: 1"=20'



4/14/14

FINAL

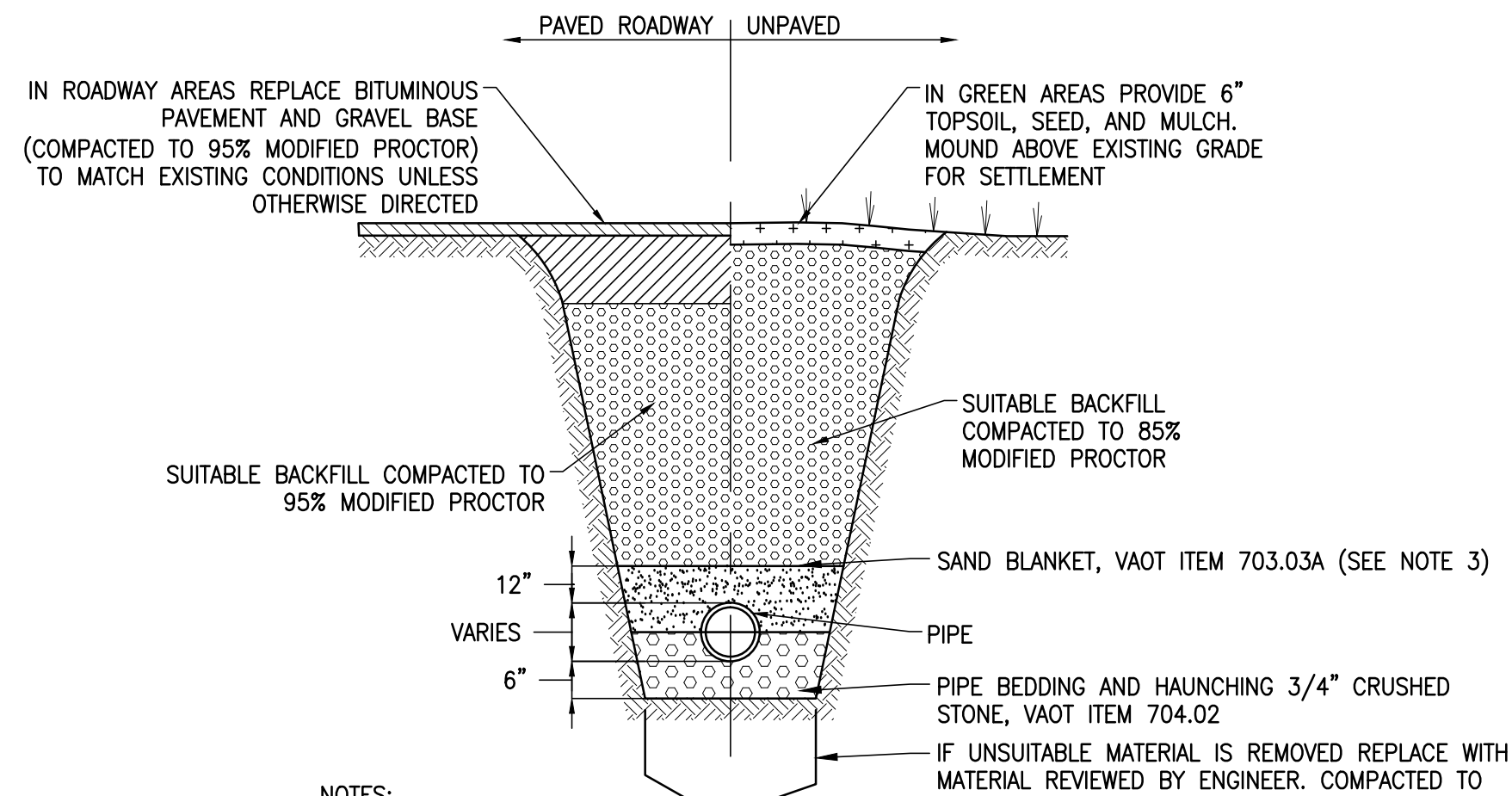
CHECKED	DESCRIPTION	DATE	NO.

CITY OF BURLINGTON, VERMONT

MAIN STREET AND SOUTH WINOOSKI AVENUE STORMWATER IMPROVEMENTS

SOUTH WINOOSKI AVENUE AT COURTHOUSE

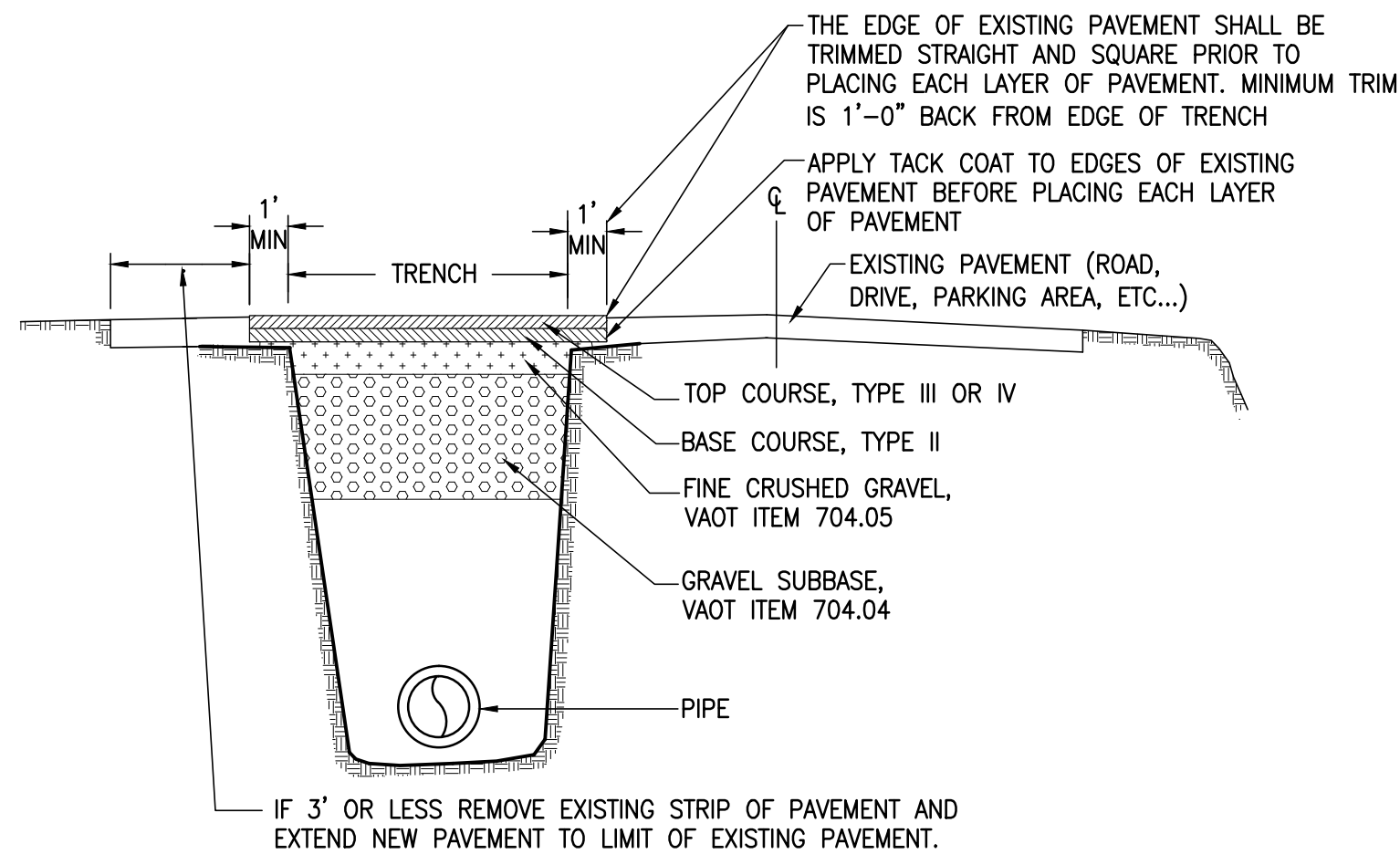
DESIGNED CM	PROJECT NO. 13059
DRAWN JEB	DRAWING NO. 4
CHECKED JJD	DATE MAR. 2014



NOTES:

1. NO MECHANICAL TAMPERS SHALL BE USED DIRECTLY OVER PVC PIPE TO ENSURE PIPE IS NOT DAMAGED.
2. BEDDING TO PROVIDE A FIRM, STABLE, CONTINUOUS AND UNIFORM SUPPORT FOR THE FULL LENGTH OF THE PIPE.
3. 3/4\"/>

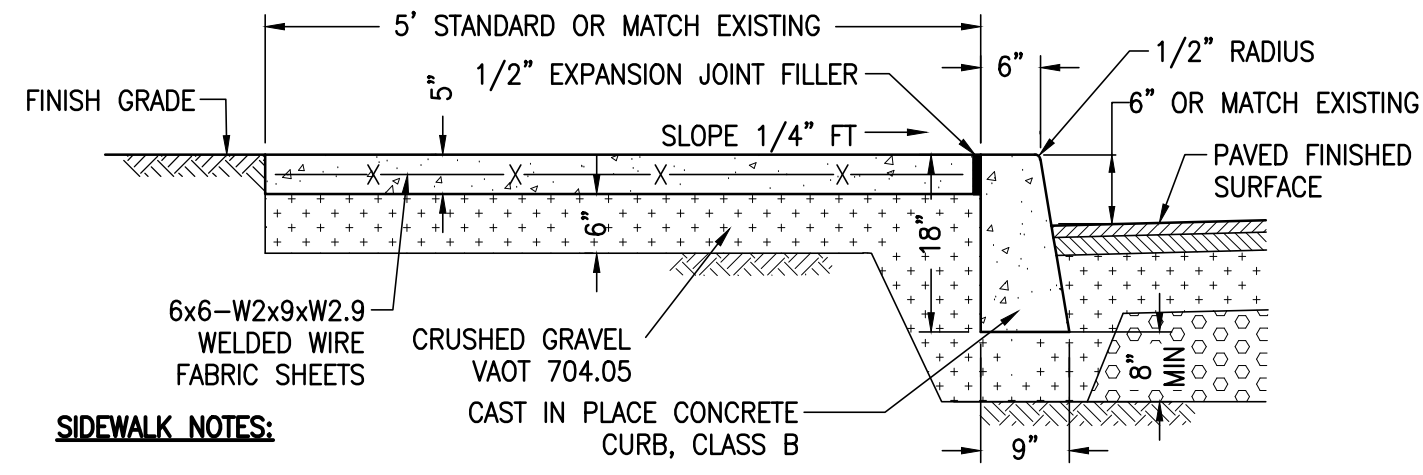
A
5
TYPICAL PIPE TRENCH DETAIL
SCALE: NONE



PAVEMENT REPAIR NOTES:

1. ALL PAVEMENT REPAIR THICKNESS SHALL BE DETERMINED IN THE FIELD BASED UPON EXISTING CONDITIONS.
2. IF NECESSARY, SHOULDER SHALL BE REPLACED TO A CONDITION EQUAL OR BETTER THAN BEFORE CONSTRUCTION ACTIVITIES.
3. ALL EXISTING PAVEMENT MARKINGS SHALL BE RE-PAINTED AS NECESSARY.

B
5
TRENCH PAVEMENT REPAIR DETAIL
SCALE: NONE



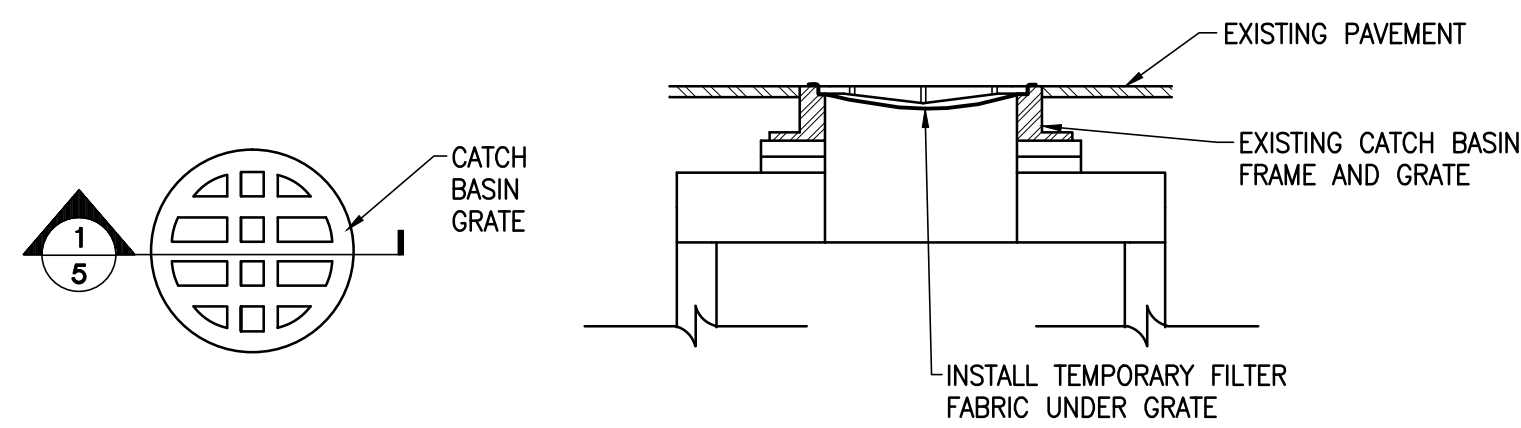
SIDEWALK NOTES:

1. PLACE A TOOLED JOINT 1/8\"/>

CONCRETE CURB NOTES:

1. CONSTRUCT IN 10'-0\"/>

C
5
CONCRETE SIDEWALK AND CURB DETAIL
SCALE: NONE

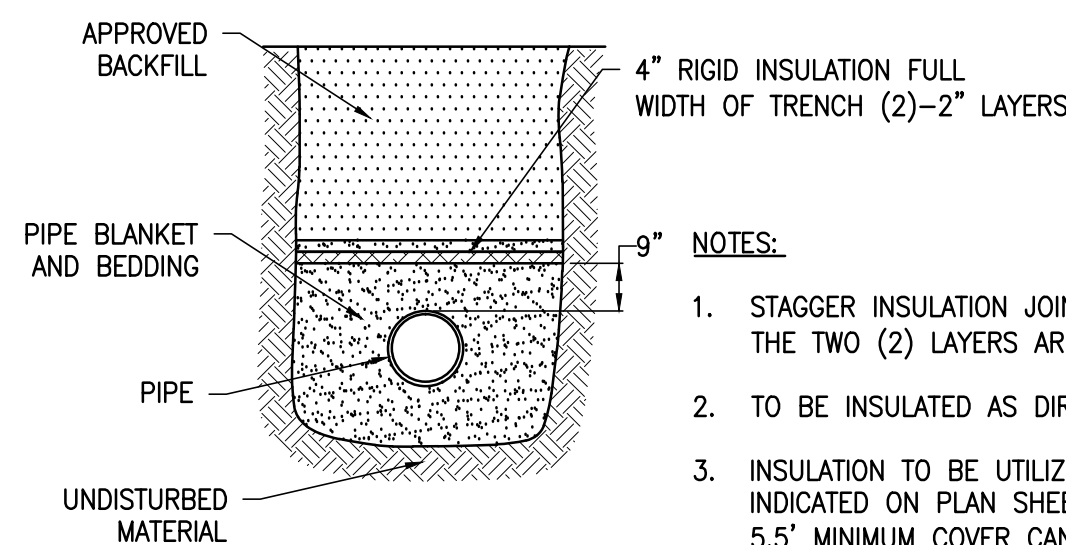


1
5
SECTION
SCALE: NONE

TEMPORARY INLET PROTECTION NOTES:

1. UNDERGRATE FABRIC INLET PROTECTION SHALL ONLY BE USED WHERE SHOWN ON PLANS. IT SHOULD ONLY BE USED FOR EXISTING CATCH BASINS IN EXISTING PAVED AREAS FOR LINEAR PIPELINE PROJECTS WHERE AMOUNT OF SEDIMENT RUN OFF IS MINIMAL AND DURATION OF CONSTRUCTION IS SHORT.
2. LIFT THE GRATE AND INSTALL FILTER FABRIC (MIRAFI 140NL OR EQUAL) OVER THE FRAME, AND THEN SET GRATE BACK IN PLACE.
3. INSPECT EACH INLET AT LEAST ONCE A WEEK AND WITHIN 24 HOURS AFTER EVERY RAINFALL. REPAIR AND REPLACEMENT OF INLET PROTECTION SHALL BE MADE AT TIME OF INSPECTION.
4. UPON STABILIZATION OF THE AREA UPSTREAM FROM THE INLET, THE PROTECTION SHALL BE REMOVED WITH THE APPROVAL OF THE ENGINEER.

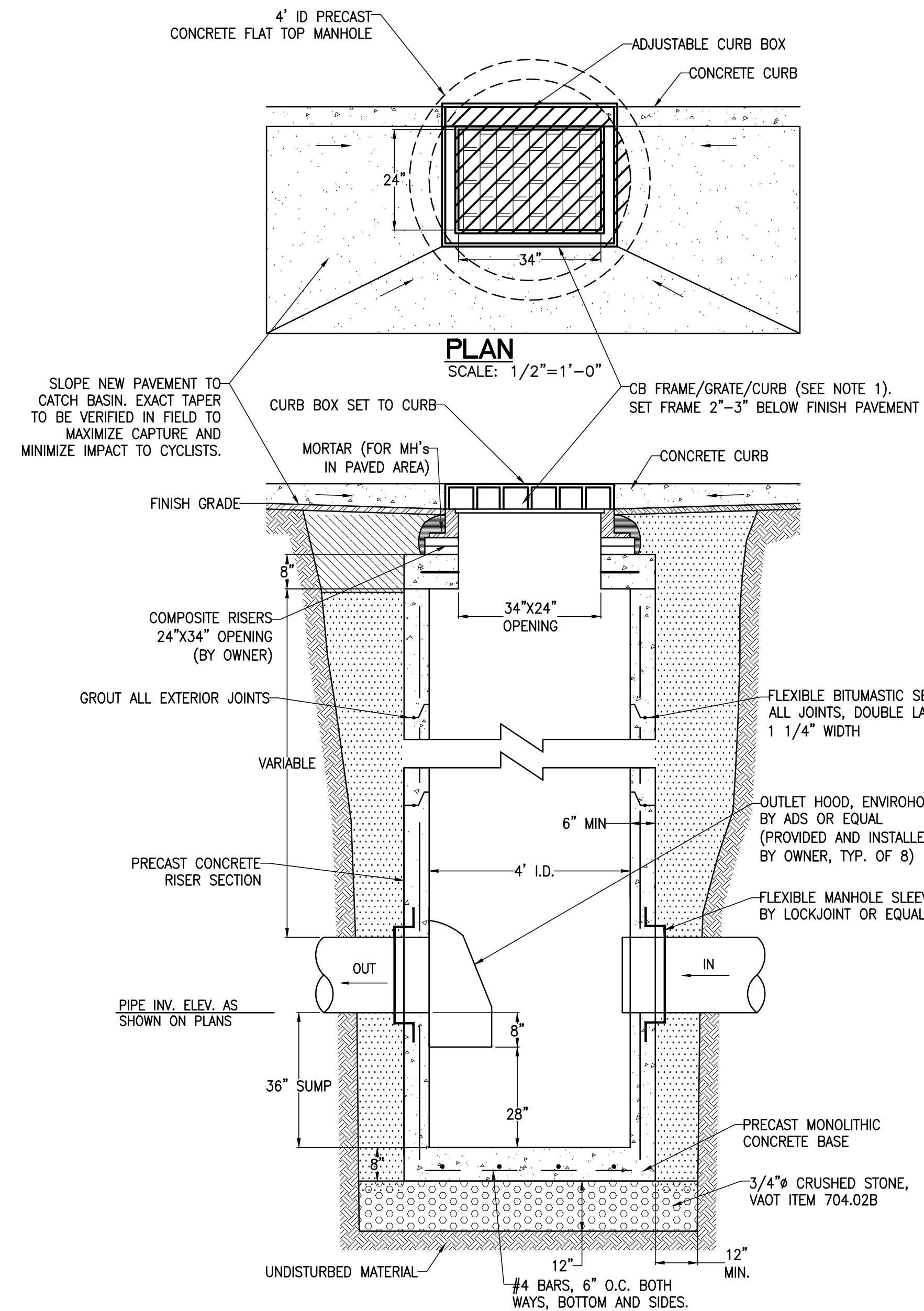
D
5
TEMPORARY FABRIC UNDER GRATE INLET PROTECTION DETAIL
SCALE: NOT TO SCALE



NOTES:

1. STAGGER INSULATION JOINTS SO THAT NO JOINTS OF THE TWO (2) LAYERS ARE ONE OVER THE OTHER.
2. TO BE INSULATED AS DIRECTED BY THE ENGINEER.
3. INSULATION TO BE UTILIZED AT ALL LOCATIONS INDICATED ON PLAN SHEETS AND OTHER AREAS WHERE 5.5' MINIMUM COVER CANNOT BE MAINTAINED.

E
5
TYPICAL PIPE INSULATION DETAIL
SCALE: NONE



NOTES:

1. PROVIDE CATCH BASIN FRAME/GRATE/CURB BY EAST JORDAN IRON WORKS, FRAME-7510Z1, GRATE-7510M3, BACK CURB GRATE-7030T4, NEENAH STYLE, OR EQUAL.
2. CONCRETE=4,000 psi; STEEL REBAR=40,000 psi
3. STRUCTURES SHALL BE DESIGNED TO WITHSTAND AN H2O LOADING.
4. STANDARD 4' CATCH BASIN BY CAMP PRECAST, SD IRELAND, OR EQUAL.
5. MANUFACTURER SHALL PROVIDE SHOP DRAWINGS FOR EACH NEW STRUCTURE DESIGN TO OWNER FOR REVIEW ALONG WITH THEIR PRICE PROPOSAL.
6. PRICING FROM CATCH BASIN MANUFACTURER SHALL INCLUDE THE STRUCTURE, COVER, FRAME, GRATE, AND CURB BOX.
7. VERTICAL DISTANCE BETWEEN THE TOP OF THE CONCRETE STRUCTURE AND PROPOSED RIM ELEVATION SHALL BE MINIMUM 12\"/>

F
5
TYPICAL CATCH BASIN DETAIL
SCALE: 1/2\"/>

4/14/14

FINAL



CHECKED	DESCRIPTION	DATE	NO.

CITY OF BURLINGTON, VERMONT

MAIN STREET AND SOUTH WINOOSKI AVENUE STORMWATER IMPROVEMENTS

DETAILS

DESIGNED CM	PROJECT NO. 13059
DRAWN JEB	DRAWING NO. 5
CHECKED JJD	
DATE MAR. 2014	