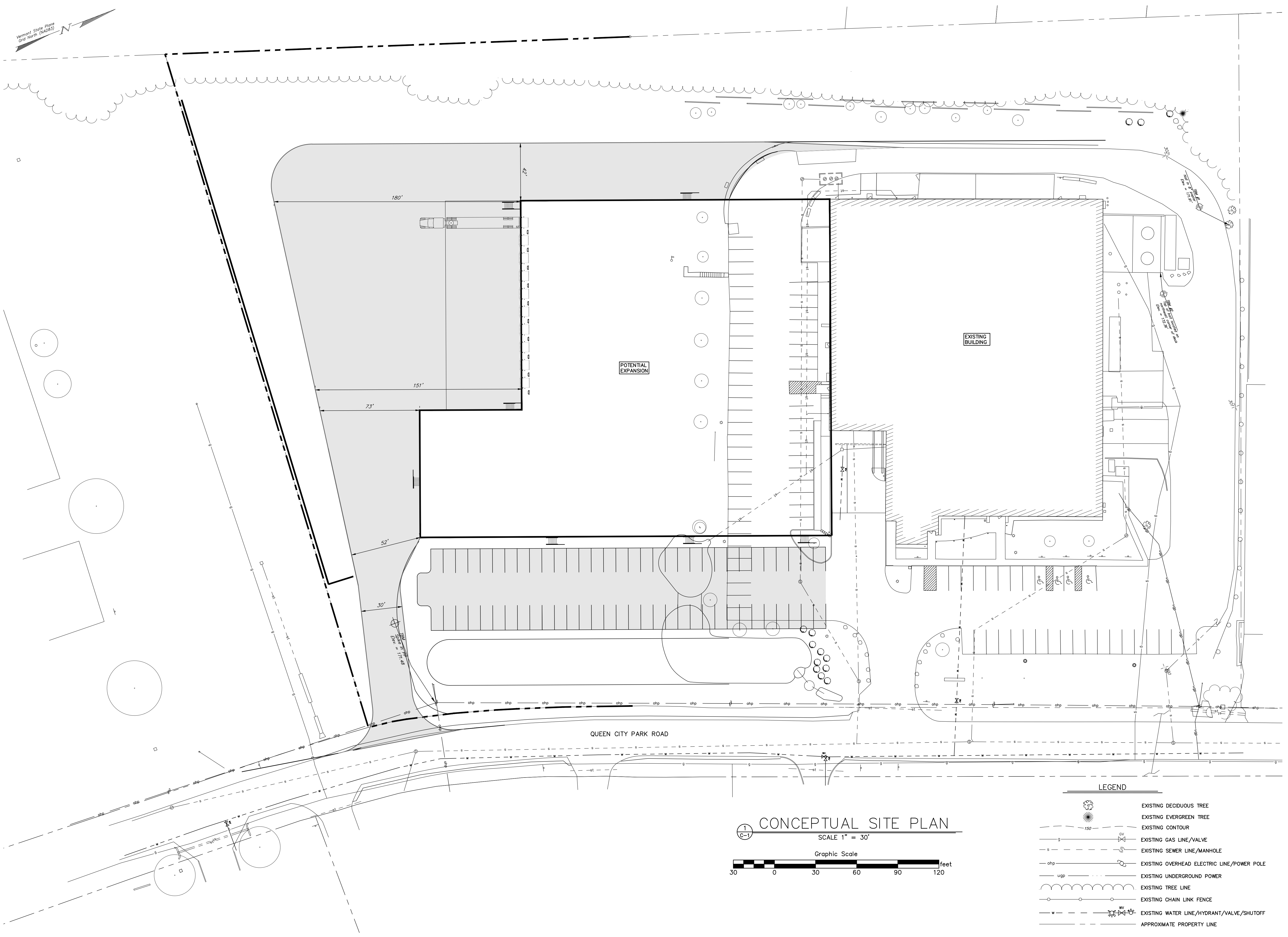


Vermont State Plane
Grid North (NAD83)



1
C-1 CONCEPTUAL SITE PLAN
SCALE 1" = 30'
Graphic Scale 0 30 60 90 120 feet

LEGEND

	EXISTING DECIDUOUS TREE
	EXISTING EVERGREEN TREE
	EXISTING CONTOUR
	EXISTING GAS LINE/VALVE
	EXISTING SEWER LINE/MANHOLE
	EXISTING OVERHEAD ELECTRIC LINE/POWER POLE
	EXISTING UNDERGROUND POWER
	EXISTING TREE LINE
	EXISTING CHAIN LINK FENCE
	EXISTING WATER LINE/HYDRANT/VALVE/SHUTOFF
	APPROXIMATE PROPERTY LINE

REVISION DATE & DESCRIPTION	BY

Champlain Consulting
ENGINEERS
185 PRIM ROAD, P.O. BOX 453
COLCHESTER, VERMONT 05446
(802) 863-8060 - 864-1878 FAX
www.champlainconsulting.com
COPYRIGHT © 2021 CHAMPLAIN CONSULTING ENGINEERS ALL RIGHTS RESERVED

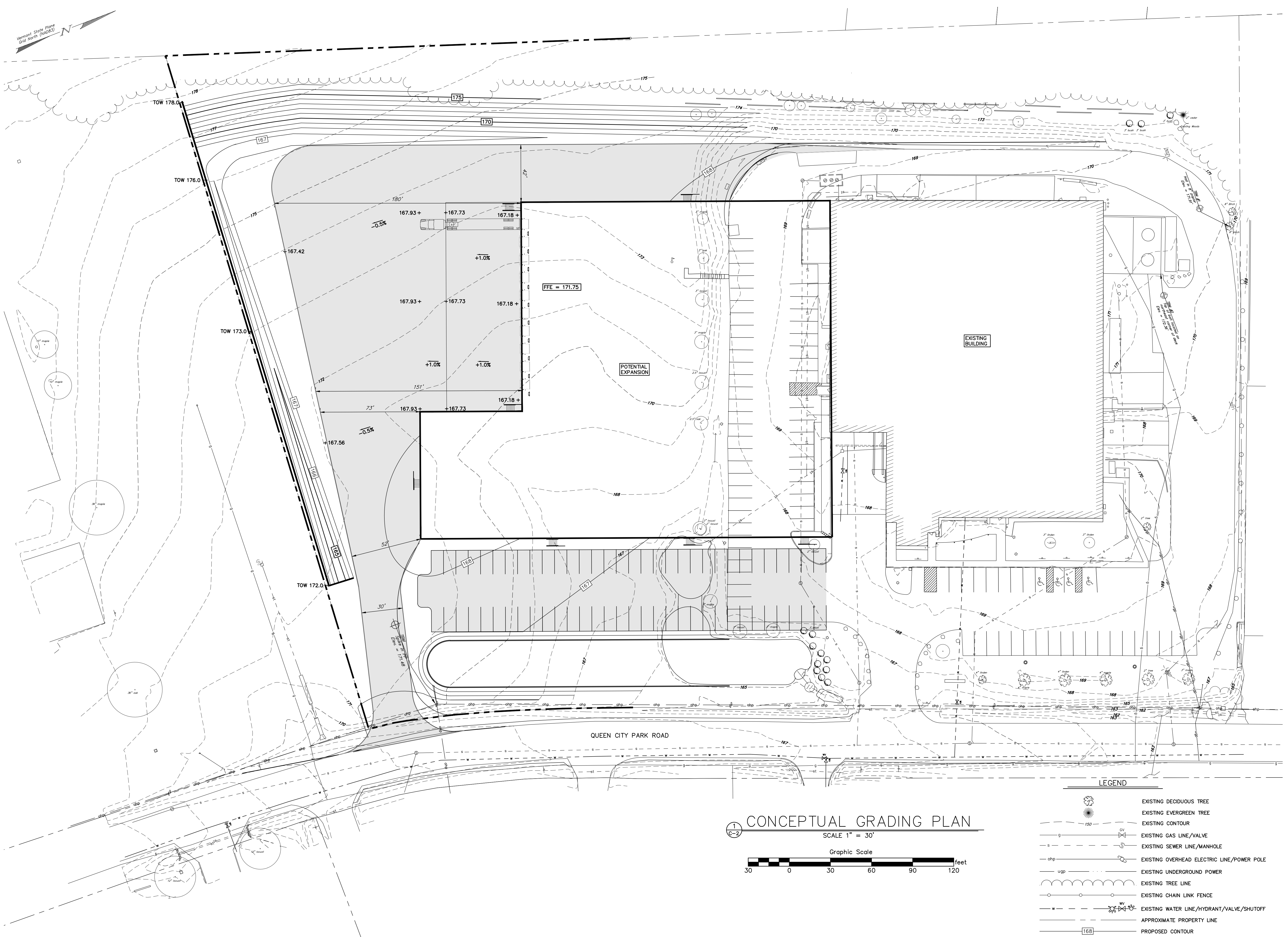
NOT FOR REVIEW FOR CONSTRUCTION
DATE: 3/10/23
Champlain Consulting ENGINEERS

RHINO FOODS
179 QUEEN CITY PARK ROAD
POTENTIAL EXPANSION
CONCEPTUAL SITE PLAN
BURLINGTON VERMONT

DRAWN
CCE
CHECKED
MEC
SCALE
1" = 30'
DATE
3/09/23
JOB NO.
2022.032
SHEET

C-1
OF 2 SHEETS

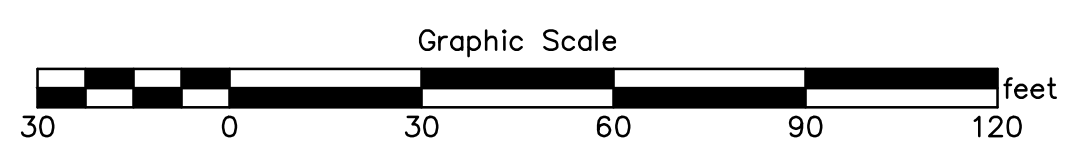
Vermont State Plane
Grid North (NAD83)



1
C-2

CONCEPTUAL GRADING PLAN

SCALE 1" = 30'



LEGEND

- EXISTING DECIDUOUS TREE
- EXISTING EVERGREEN TREE
- EXISTING CONTOUR
- EXISTING GAS LINE/VALVE
- EXISTING SEWER LINE/MANHOLE
- EXISTING OVERHEAD ELECTRIC LINE/POWER POLE
- EXISTING UNDERGROUND POWER
- EXISTING TREE LINE
- EXISTING CHAIN LINK FENCE
- EXISTING WATER LINE/HYDRANT/VALVE/SHUTOFF
- APPROXIMATE PROPERTY LINE
- PROPOSED CONTOUR

REVISION DATE & DESCRIPTION	BY

Champlain Consulting ENGINEERS

185 PRIM ROAD, P.O. BOX 453
COLCHESTER, VERMONT 05446
(802) 863-8060 - 864-1878 FAX
www.champlainconsulting.net

COPYRIGHT © 2021 CHAMPLAIN CONSULTING ENGINEERS. ALL RIGHTS RESERVED.

NOT FOR REVIEW FOR CONSTRUCTION

DATE: 3/23/23
Champlain Consulting ENGINEERS

RHINO FOODS
179 QUEEN CITY PARK ROAD
POTENTIAL EXPANSION
CONCEPTUAL GRADING PLAN
BURLINGTON VERMONT

DRAWN: CCE
CHECKED: MEC
SCALE: 1" = 30'
DATE: 3/09/23
JOB NO.: 2022.032
SHEET

C-2

OF 2 SHEETS