



ENGINEERING SURVEY

PLANNING • ENVIRONMENTAL

478 BLAIR PARK ROAD | WILLISTON, VERMONT 05495
802.879.6331 | WWW.TCEVT.COM

Revisions	No.	Description	Date	By
	1	For Local Submittal	2/15/19	AAD
	2	Per DPW Comments	11/6/19	AAD
	3	Geotech Notes & Dumpster	1/16/20	AAD

Use of These Drawings
1. Unless otherwise noted, these Drawings are intended for preliminary planning, coordination with other disciplines or utilities, and/or approval from the regulatory authorities. They are not intended as construction drawings unless noted as such or marked approved by a regulatory authority.

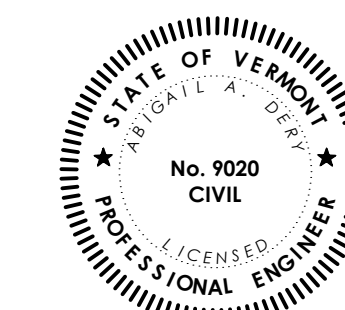
2. By use of these drawings for construction of the Project, the Owner represents that they have reviewed, approved, and accepted the drawings, obtained all necessary permits, and have met with all applicable parties/disciplines, including but not limited to, the Engineer and the Architect, to insure these plans are properly coordinated including, but not limited to, contract documents, specifications, owner/contractor agreements, building and mechanical plans, private and public utilities, and other pertinent permits for construction.

3. Owner and Architect, are responsible for final design and location of buildings shown, including an area measured a minimum five (5) feet around any building and coordinating final utility connections shown on these plans.

4. Prior to using these plans for construction layout, the user shall contact TCE to ensure the plan contains the most current revisions.

5. These Drawings are specific to the Project and are not transferable. As instruments of service, these drawings, and copies thereof, furnished by TCE are its exclusive property. Changes to the drawings may only be made by TCE. If errors or omissions are discovered, they shall be brought to the attention of TCE immediately.

6. It is the User's responsibility to ensure this copy contains the most current revisions.



Project Title

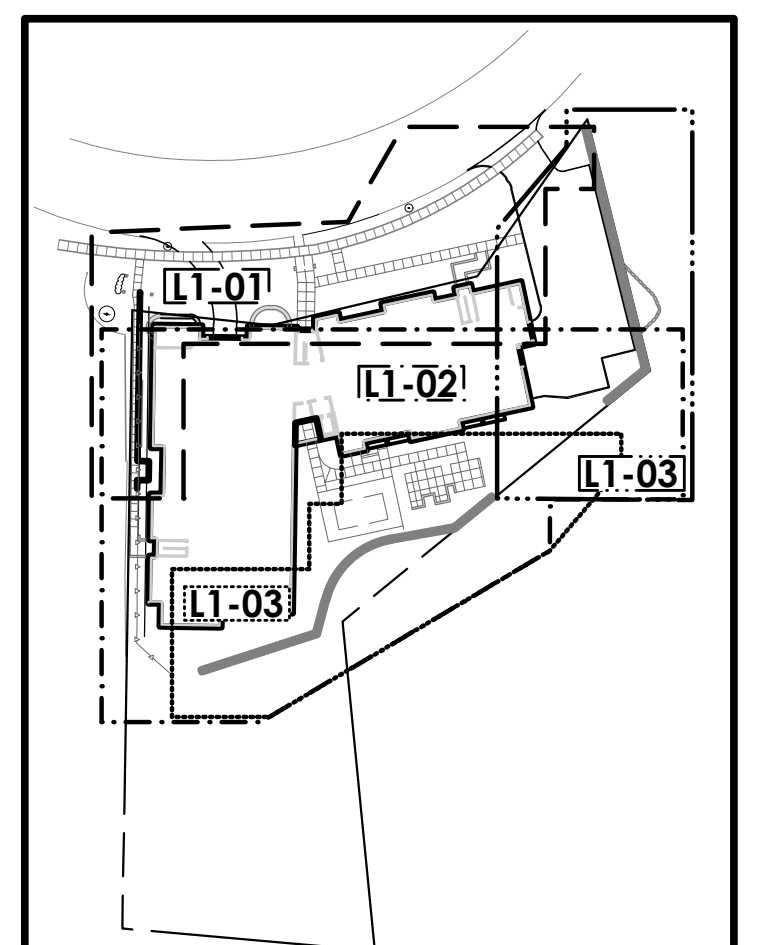
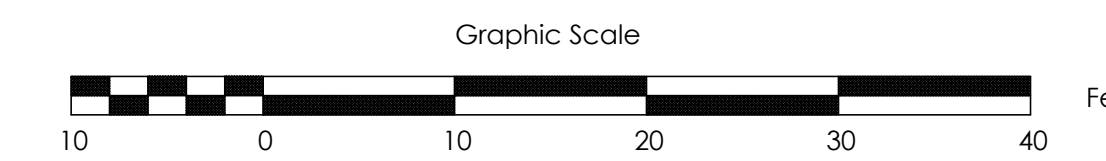
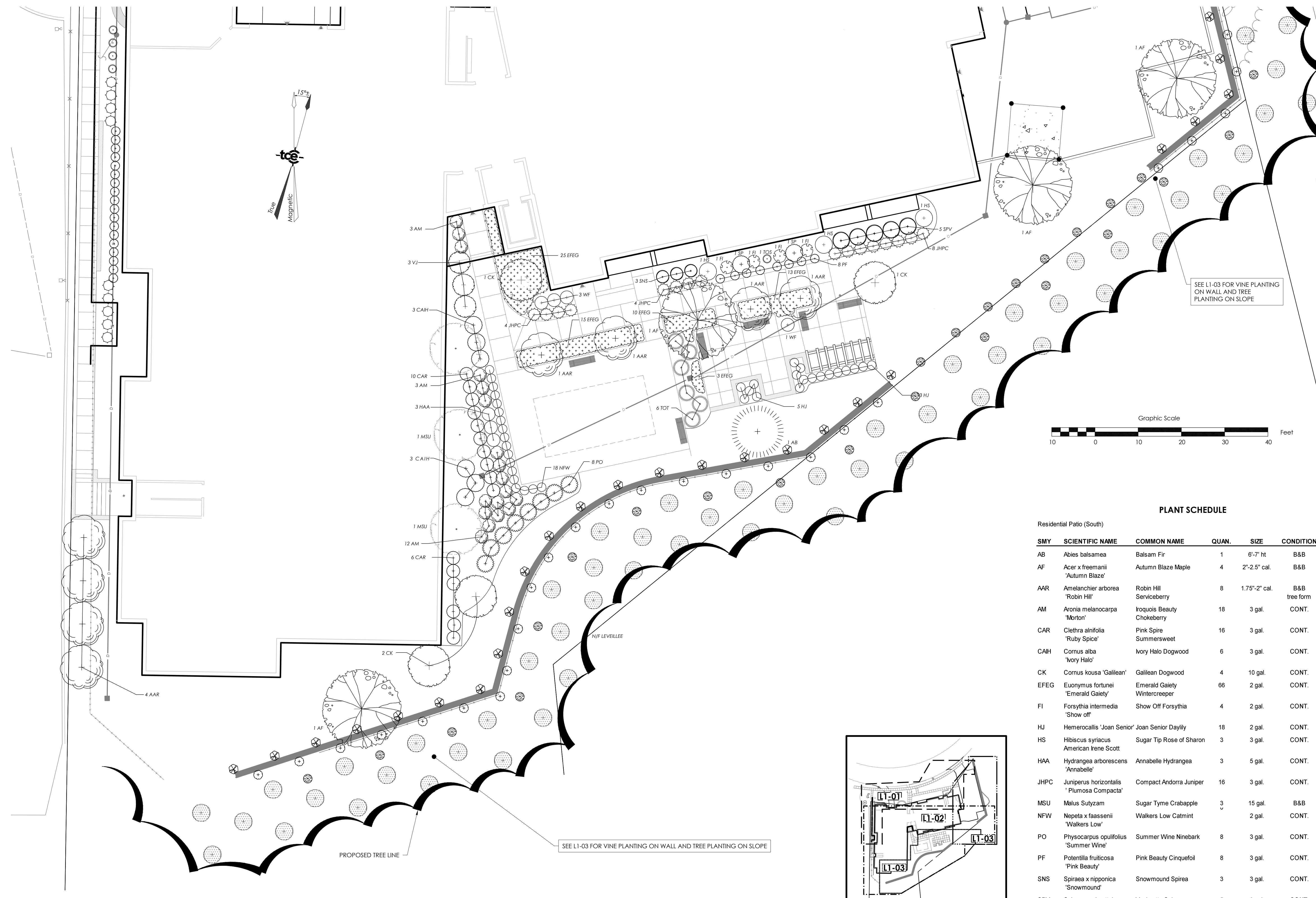
Sisters and Brothers Investment Group
110 Riverside Ave.
Burlington, Vermont

Sheet Title

Planting Plan: South

Date: 11/21/2012
Scale: 1" = 10'
Project Number: 2010083
Drawn By: RMP
Project Engineer: AAD
Approved By:
Field Book:

L1-02



LANDSCAPE PLAN SHEET INDEX
1" = 100'

PLANT SCHEDULE

SMY	SCIENTIFIC NAME	COMMON NAME	QUAN.	SIZE	CONDITION
AB	<i>Abies balsamea</i>	Balsam Fir	1	6'-7' ht	B&B
AF	<i>Acer x freemanii</i> 'Autumn Blaze'	Autumn Blaze Maple	4	2"-2.5" cal.	B&B
AAR	<i>Amelanchier arborea</i> 'Robin Hill'	Robin Hill Serviceberry	8	1.75"-2" cal.	B&B tree form
AM	<i>Aronia melanocarpa</i> 'Morton'	Iroquois Beauty Chokeberry	18	3 gal.	CONT.
CAR	<i>Clethra alnifolia</i> 'Ruby Spice'	Pink Spire Summersweet	16	3 gal.	CONT.
CAIH	<i>Cornus alba</i> 'Ivory Halo'	Ivory Halo Dogwood	6	3 gal.	CONT.
CK	<i>Cornus kousa</i> 'Galilean'	Galilean Dogwood	4	10 gal.	CONT.
EFEG	<i>Euonymus fortunei</i> 'Emerald Gaiety'	Emerald Gaiety Wintercreeper	66	2 gal.	CONT.
FI	<i>Forsythia intermedia</i> 'Show off'	Show Off Forsythia	4	2 gal.	CONT.
HJ	<i>Hemerocallis</i> 'Joan Senior'	Joan Senior Daylily	18	2 gal.	CONT.
HS	<i>Hibiscus syriacus</i> 'American Irene Scott'	Sugar Tip Rose of Sharon	3	3 gal.	CONT.
HAA	<i>Hydrangea arborescens</i> 'Annabelle'	Annabelle Hydrangea	3	5 gal.	CONT.
JHPC	<i>Juniperus horizontalis</i> 'Plumosa Compacta'	Compact Andorra Juniper	16	3 gal.	CONT.
MSU	<i>Malus Sutyzam</i>	Sugar Tyme Crabapple	3	15 gal.	B&B
NFW	<i>Nepeta x faassenii</i> 'Walkers Low'	Walkers Low Catmint	2	2 gal.	CONT.
PO	<i>Physocarpus opulifolius</i> 'Summer Wine'	Summer Wine Ninebark	8	3 gal.	CONT.
PF	<i>Potentilla fruticosa</i> 'Pink Beauty'	Pink Beauty Cinquefoil	8	3 gal.	CONT.
SNS	<i>Spiraea x nipponica</i> 'Snowbound'	Snowbound Spirea	3	3 gal.	CONT.
SPV	<i>Spiraea vanhouttei</i>	Vanhoutte Spirea	5	3 gal.	CONT.
SP	<i>Syringa patula</i> "Miss Kim"	Miss Kim Manchurian Lilac	2	2.5-3' ht	CONT.
TOS	<i>Thuja occidentalis</i> 'Smaragd'	Smaragd Arborvitae	1	5'-6' ht	B&B
TOT	<i>Thuja occidentalis</i> 'Techny'	Techny Arborvitae	6	3 gal.	CONT.
VJ	<i>Viburnum x juddii</i>	Judd Viburnum	3	5 gal.	CONT.
WF	<i>Weigela florida</i> 'French Lace'	French Lace Weigela	4	3 gal.	CONT.