

2021 JOINT INSTITUTION PARKING MANAGEMENT PLAN ANNUAL UPDATE

BURLINGTON Planning
Commission

February 23rd, 2022



CHAMPLAIN
COLLEGE



The University of Vermont

THE
University of Vermont
MEDICAL CENTER



CATMA Brief Overview

Founding Hill Institutions in 1992

Transportation Management Associations (TMAs)

Transportation Demand Management Strategies (TDM)

- Supports coordinated & more efficient land use
- Reduces environmental impacts (VMTs & GHGs)
- Provides sustainable travel options

Expanded to regional TMA in 2015

- Opened membership to businesses & developers
- Support TDM needs in region



JIPMP Annual Update Overview

Purpose of JIPMP Annual Update

Burlington CDO Article 8

Current Parking Utilization

Manage parking demand & resources holistically

Collective TDM strategies

Current and Future Parking Conditions

2021 Annual Update
Table 2.1

Current Conditions	Champlain College	UVM	UVM Medical Center
Current Potential Users	2,967	17,647	6,493
Current Peak Parking Utilization	429	3,512	2,015
Minimum Parking Required by CDO	1,677	11,159	3,284
Current Parking Supply	646	5,147	2,509

2020-2022 JIPMP
Table 2.2

Future Conditions	Champlain College	UVM	UVM Medical Center
Future Potential Users ¹	2,910	17,931	6,197
Future Demand ²	591	5,044	2,330
Minimum Parking Required by CDO ³	1,754	11,313	3,284
Net Impact of Planned Projects (2020-2025)	-	128	-
Future Parking Supply	660	5,067	2,509
Waiver Request ⁴	1,094	6,246	775

Collective TDM Strategies

CATMA Bike/Walk Reward Program

Transit Discounts & Subsidies (*GMT Fares are Suspended until July 2022*)

- UVM & CC, Unlimited Access program
- UVMMC, discount bus (and ferry) passes

Campus and employee shuttles

Real-time shuttle app

Off-site parking & shuttles

Bicycle Infrastructure & Parking (incl Green Mtn Bike/Walkway)

Bikeshare Membership Discounts

CarShare Vt Campus Program (UVM & CC)

Education, Outreach & Awareness



CHAMPLAIN
COLLEGE



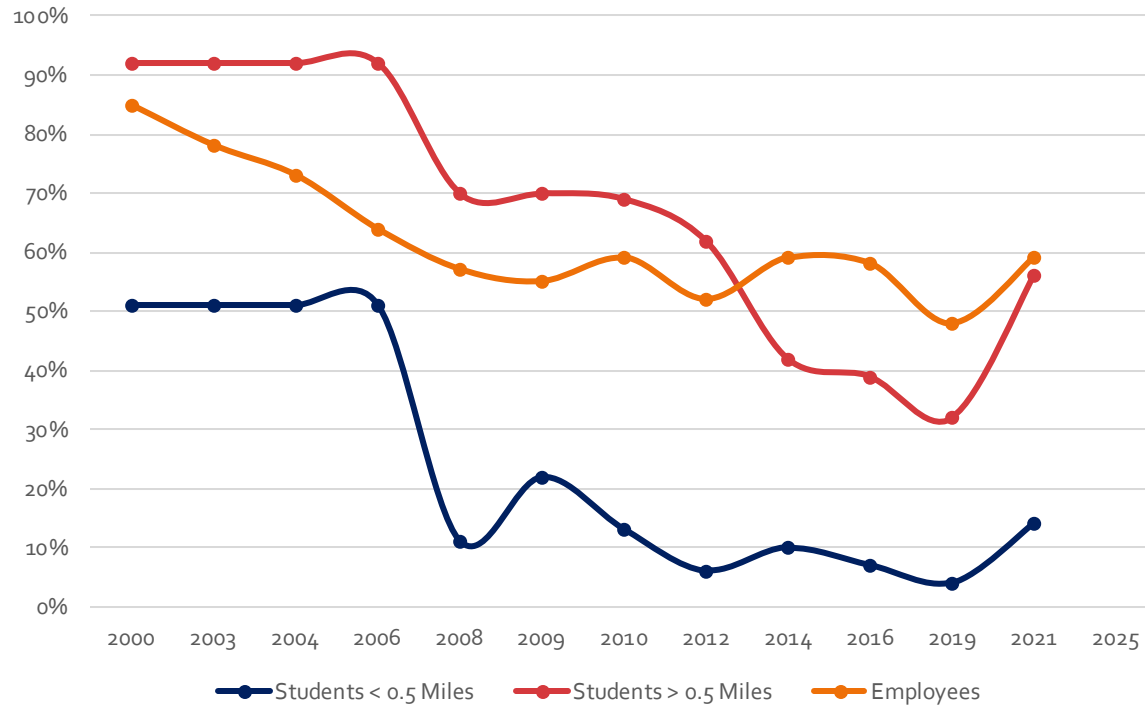
The University of Vermont

THE
University of Vermont
MEDICAL CENTER

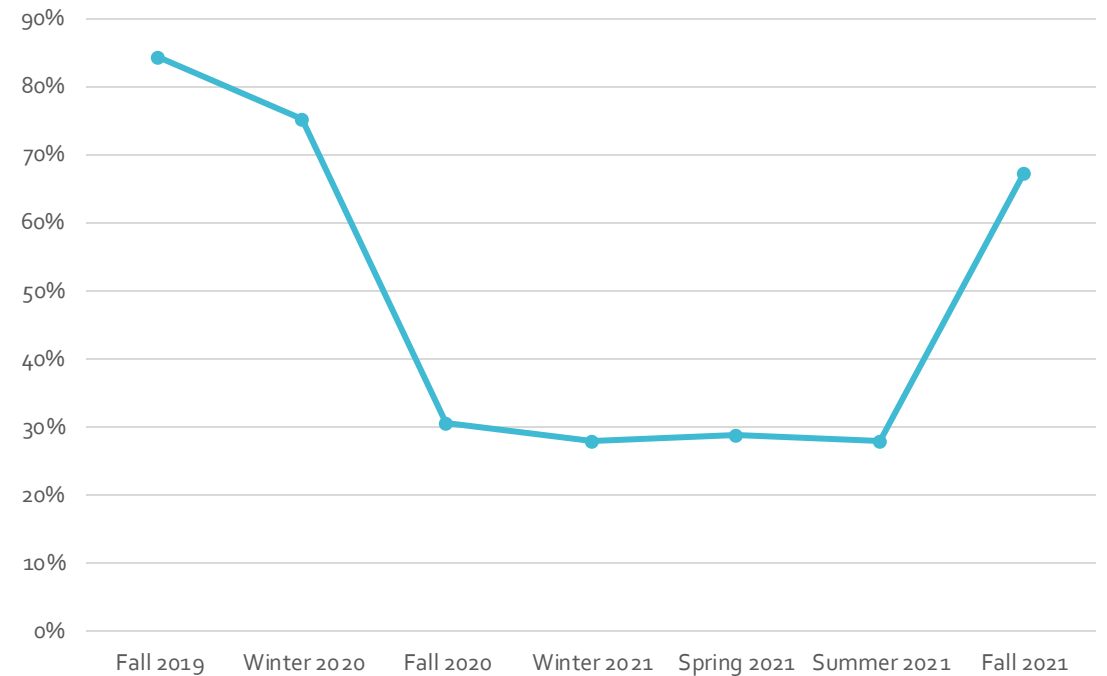


CHAMPLAIN COLLEGE

Drive Alone Trend Figure 3.6



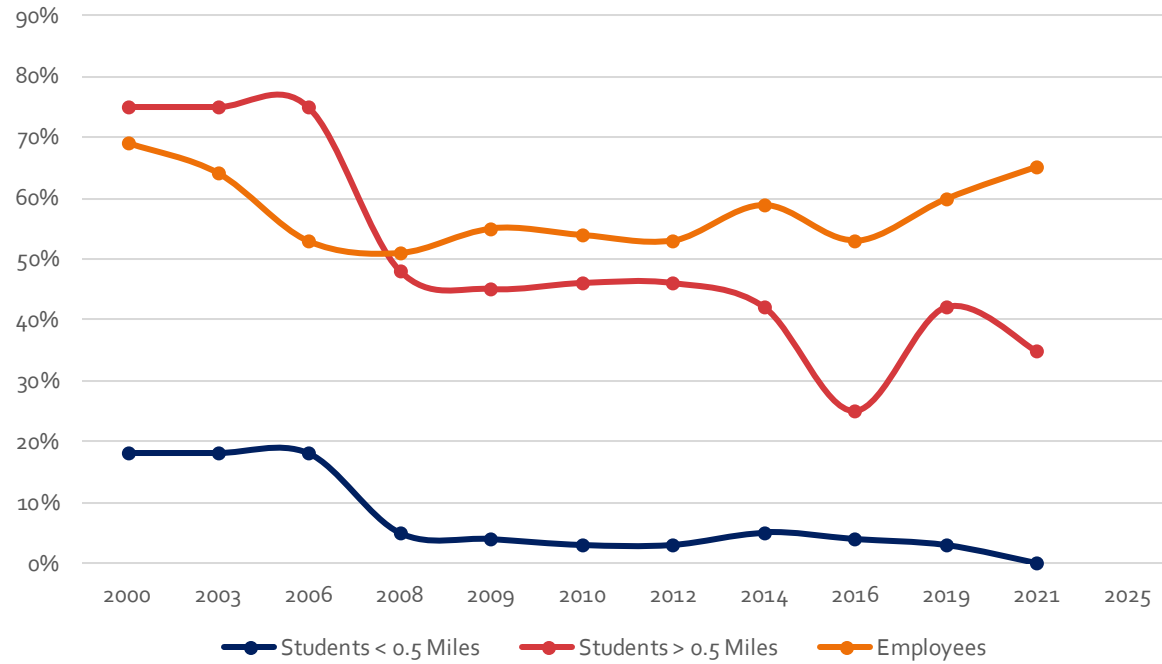
Parking Utilization Trend Figure 3.1



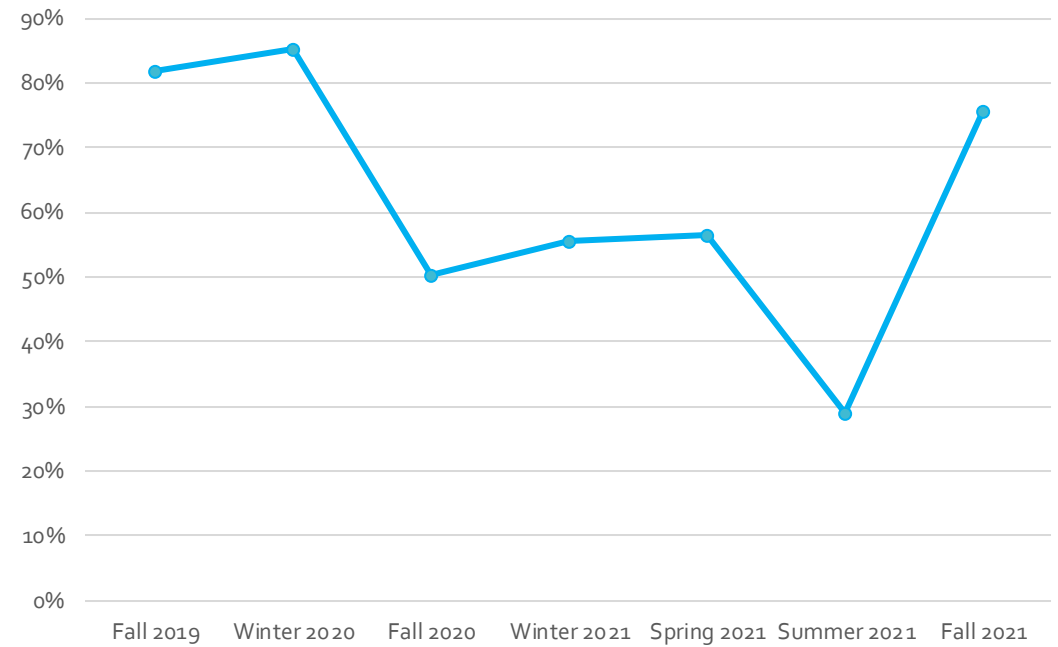


The University of Vermont

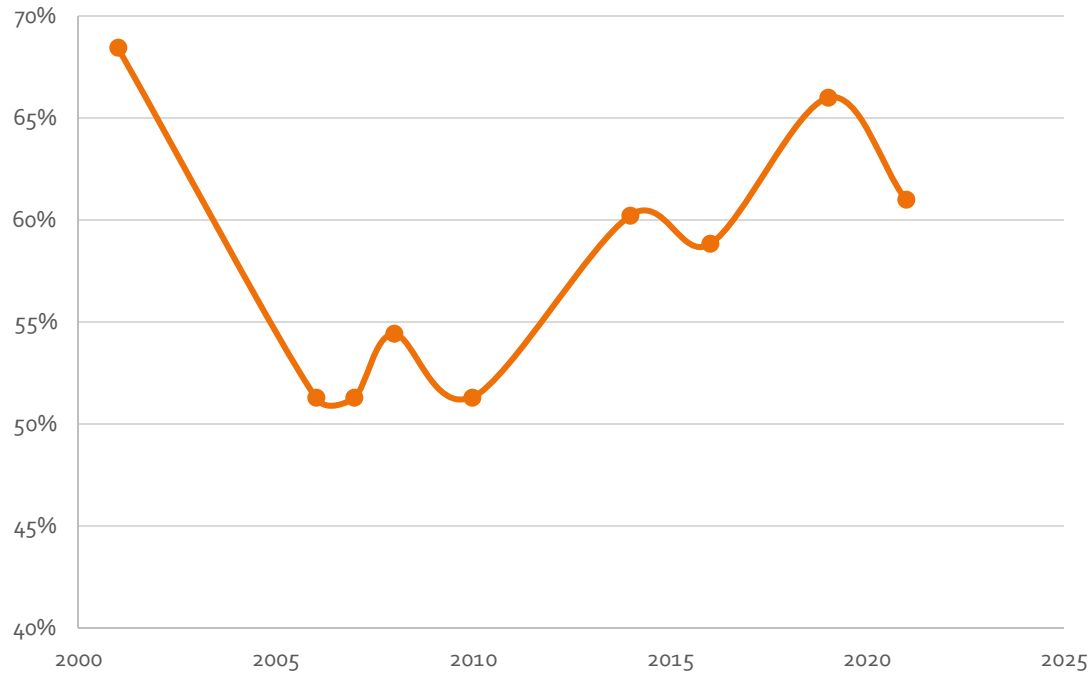
Drive Alone Trend Figure 4.6



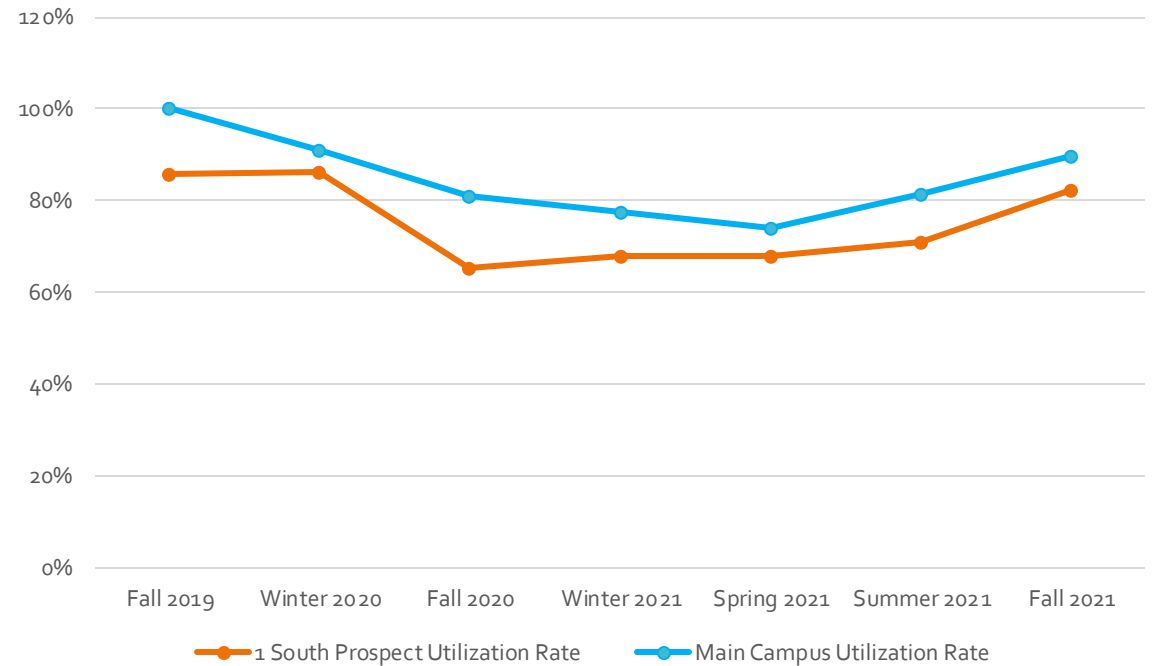
Parking Utilization Trend Figure 4.3



Drive Alone Trend
Figure 5.5



Parking Utilization Trend
Figure 5.1



Moving Forward

CATMA will begin work on the next 5-year plan, the 2023-2028 JIPMP, in the coming months

CATMA will look to incorporate DRB findings in the next 5-year JIPMP

CATMA looks forward to the findings of the City of Burlington study on the impact of TDM, will look to incorporate those into further iterations of the JIPMP

Questions

Executive Director, Sandy Thibault
sandy@catmavt.org

Transportation Analyst, Josh Katz
josh@catmavt.org

Office Phone #: 802-881-0283

