

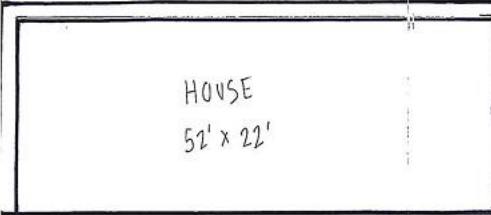
NORTH



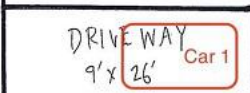
← 165' →

DEPARTMENT OF PLANNING & ZONING

Existing Parking



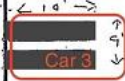
HOUSE
52' x 22'



DRIVEWAY
9' x 26' Car 1



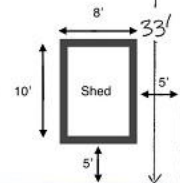
10' x 78' Car 2



Car 3

Unsafe parking and driving conditions, especially in winter.

No room for maneuvering or turning around.
Need to back out into the main road
with the risk of hitting the house

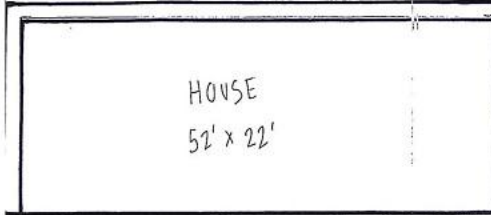


Shed

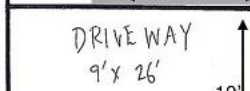
← 165' →

DEPARTMENT OF PLANNING & ZONING

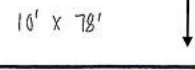
Proposed Parking



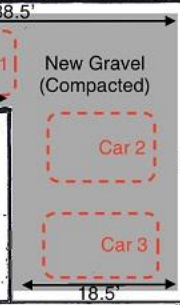
HOUSE
52' x 22'



DRIVEWAY
9' x 26'



10' x 78'



New Gravel
(Compacted)

38.5'

9'

20'

Car 1

Car 2

Car 3

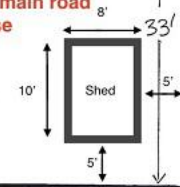
19'

18.5'

28'

New Gravel for the extended parking area
is marked in grey.

Will allow for safer parking and maneuvering,
eliminate the need to back out into the main road
and the risk of hitting the house



Shed