

**NORTH ELEVATION - MATERIALS LEGEND**

MATERIAL	NORTH BUILDING AREA (SQ. FT.)	% OF WHOLE
PRIMARY MATERIAL 1A RED BRICK	16,784	52
PRIMARY MATERIAL 1B BUFF BRICK	3,406	11
PRIMARY MATERIAL 2 - CURTAINWALL GLAZING* (TRANSPARENT/ SPANDREL)	7,073	22
SECONDARY MATERIAL 1 METAL PANEL (COLORS VARY)	3,415	10
SECONDARY MATERIAL 2 GRANITE	402	1
SECONDARY MATERIAL 3 LIMESTONE OR PRECAST SILL	119	1
LOUVERS, PAINTED TO MATCH ADJ. METAL PANEL OR CURTAIN WALL FRAME	1,188	3
TOTAL ELEVATION, EXCLUDING WINDOWS	32,387	100
TOTAL ELEVATION, INCLUDING WINDOWS**	38,151	**

**NOTES:**  
 \* METAL PANEL WITHIN CURTAINWALL AREAS IS COUNTED AS METAL PANEL  
 \*\* EXCEPT FOR CURTAINWALL, GLAZING IS EXCLUDED FROM MATERIALS TAKEOFFS

**1 NORTH (CHERRY STREET) ELEVATION**  
 SCALE: 1/16" = 1'-0" REF.: A102A

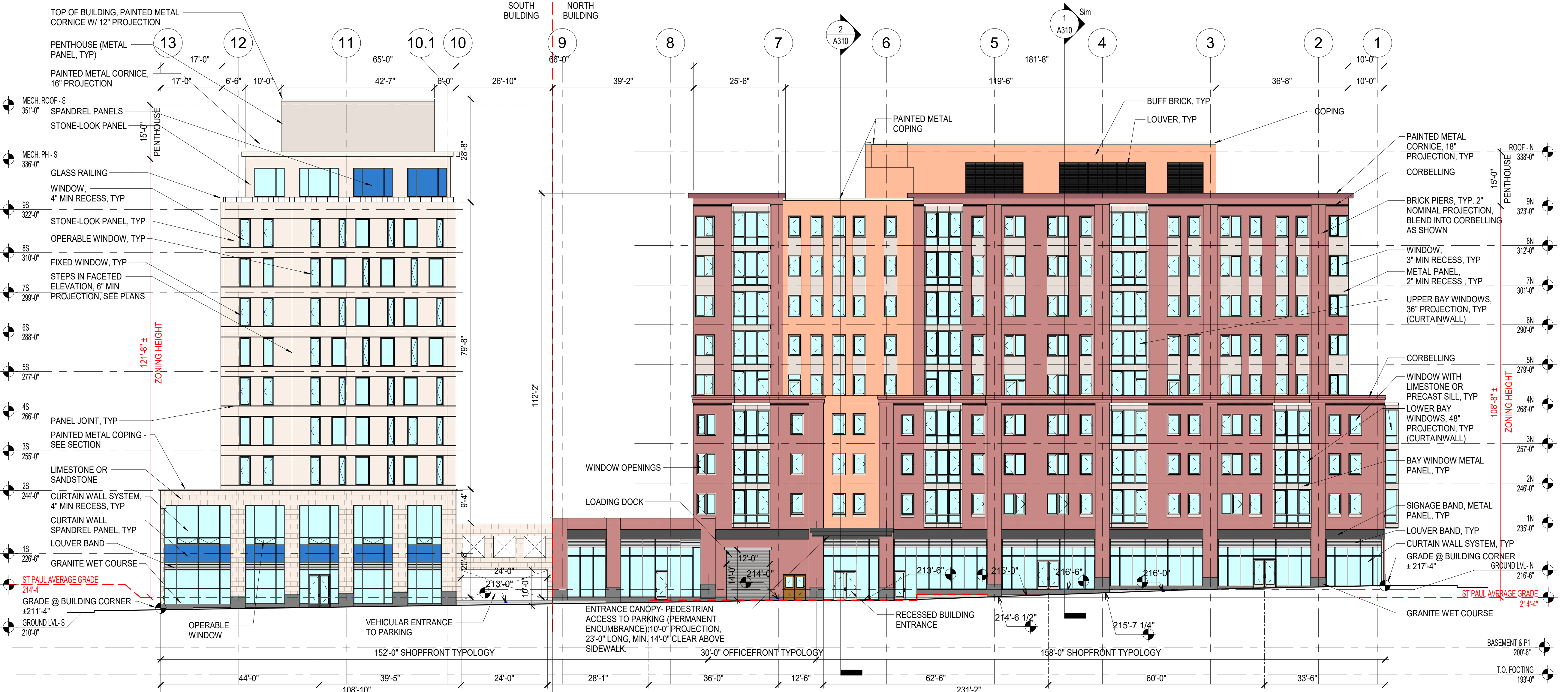
**EAST ELEVATION - MATERIALS LEGEND**

MATERIAL	NORTH BUILDING AREA (SQ. FT.)	SOUTH BUILDING AREA (SQ. FT.)	TOTAL AREA (SQ. FT.)	% OF WHOLE
PRIMARY MATERIAL 1A RED BRICK	9,192	N/A	9,192	34
PRIMARY MATERIAL 1B BUFF BRICK	2,488	N/A	2,488	9
PRIMARY MATERIAL 2 - CURTAINWALL GLAZING* (TRANSPARENT/ SPANDREL)	4,410	1,724	6,134	22
SECONDARY MATERIAL 1 METAL PANEL (COLORS VARY)	2,173	N/A	2,173	8
SECONDARY MATERIAL 2 GRANITE	334	140	474	2
SECONDARY MATERIAL 3 LIMESTONE OR PRECAST SILL	27	N/A	27	0
LOUVERS, PAINTED TO MATCH ADJ. METAL PANEL OR CURTAIN WALL FRAME	834	N/A	834	3
PRIMARY MATERIAL 3A STONE-LOOK PANEL	N/A	5,040	5,040	18
PRIMARY MATERIAL 3B LIMESTONE OR SANDSTONE	N/A	1,190	1,190	4
TOTAL ELEVATION, EXCLUDING WINDOWS	19,458	8,094	27,552	100
TOTAL ELEVATION, INCLUDING WINDOWS**	23,050	9,581	32,631	**

**NOTES:**  
 \* METAL PANEL WITHIN CURTAINWALL AREAS IS COUNTED AS METAL PANEL  
 \*\* EXCEPT FOR CURTAINWALL, GLAZING IS EXCLUDED FROM MATERIALS TAKEOFFS

**ELEVATION & SECTION GENERAL NOTE**

1. BUILDING HEIGHTS MEASURED FROM AVERAGE GRADE AT FACE OF BUILDING SIDEWALK TO ROOF DECK ABOVE THE HIGHEST OCCUPIED LEVEL.



**2 EAST (ST PAUL STREET) ELEVATION**  
 SCALE: 1/16" = 1'-0" REF.: A410

**fff**  
**fremam | french | freeman**  
 81 Maple Street • Burlington VT 05401  
 802-464-0844 • www.frm.com  
 Architecture • Planning • Interiors

**ENGINEERING VENTURES INC.**  
 100 New Haven Street • Burlington VT 05401  
 802-255-1111 • www.engv.com  
 Civil / Site Engineering

**SE GROUP**  
 111 Church St. Suite 330  
 Burlington, VT 05401 | 802.362.0090  
 www.segroup.com  
 Landscape Architecture / Streetscape

**CITYPLACE**  
**BURLINGTON**  
 ZONING SUBMISSION - NOT FOR CONSTRUCTION

**BTC MALL ASSOCIATES, LLC**  
 A PROJECT BY  
**DEWONWOOD INVESTORS, LLC**  
 DONA SNEY, MANAGING DIRECTOR

PROJECT NO: **A1947.00** CONSULTANT PROJ. NO:  
 ORIGINATOR DATE: **10/15/2020** SCALE: **1/16" = 1'-0"**  
 DRAWN BY: **CL/NE/JC** CHECKED BY: **JR**

SUBMISSION DATE: **15 Oct 2020**  
 SUBMISSION CLASSIFICATION: **9 Nov 2020**  
 Rev. 2 **15 Jan 2021**

**EXTERIOR ELEVATIONS**

SHEET NO: **A200**



**WEST ELEVATION - MATERIALS LEGEND**

MATERIAL	NORTH BUILDING AREA (SQ. FT.)	% OF WHOLE
PRIMARY MATERIAL 1A RED BRICK	11,533	59
PRIMARY MATERIAL 1B BUFF BRICK	1,760	9
PRIMARY MATERIAL 2 - CURTAINWALL GLAZING* (TRANSPARENT/ SPANDREL)	3,717	19
SECONDARY MATERIAL 1 METAL PANEL (COLORS VARY)	1,438	7
SECONDARY MATERIAL 2 GRANITE	344	1
SECONDARY MATERIAL 3 LIMESTONE OR PRECAST SILL	66	1
LOUVERS, PAINTED TO MATCH ADJ. METAL PANEL OR CURTAIN WALL FRAME	769	4
TOTAL ELEVATION, EXCLUDING WINDOWS	19,627	100
TOTAL ELEVATION, INCLUDING WINDOWS**	22,920	**

**NOTES:**  
 \* METAL PANEL WITHIN CURTAINWALL AREAS IS COUNTED AS METAL PANEL  
 \*\* EXCEPT FOR CURTAINWALL, GLAZING IS EXCLUDED FROM MATERIALS TAKEOFFS

**1 WEST (PINE STREET) ELEVATION**

A201 SCALE: 1/16" = 1'-0" REF.: A090A



**SOUTH ELEVATION - MATERIALS LEGEND**

MATERIAL	SOUTH BUILDING AREA (SQ. FT.)	% OF WHOLE
PRIMARY MATERIAL 3A STONE-LOOK PANEL	15,000	60
PRIMARY MATERIAL 3B LIMESTONE OR SANDSTONE	3,600	14
PRIMARY MATERIAL 2 - CURTAINWALL GLAZING* (TRANSPARENT/ SPANDREL)	4,122	17
SECONDARY MATERIAL 1 METAL PANEL (COLORS VARY)	1,520	6
SECONDARY MATERIAL 2 GRANITE	360	1
LOUVERS, PAINTED TO MATCH ADJ. METAL PANEL OR CURTAIN WALL FRAME	480	12
TOTAL ELEVATION, EXCLUDING WINDOWS	25,082	100
TOTAL ELEVATION, INCLUDING WINDOWS**	32,540	**

**NOTES:**  
 \* METAL PANEL WITHIN CURTAINWALL AREAS IS COUNTED AS METAL PANEL  
 \*\* EXCEPT FOR CURTAINWALL, GLAZING IS EXCLUDED FROM MATERIALS TAKEOFFS

**ELEVATION & SECTION GENERAL NOTE**

1. BUILDING HEIGHTS MEASURED FROM AVERAGE GRADE AT FACE OF BUILDING SIDEWALK TO ROOF DECK ABOVE THE HIGHEST OCCUPIED LEVEL.

**2 SOUTH (BANK STREET) ELEVATION**

A201 SCALE: 1/16" = 1'-0" REF.: A090A

**CITYPLACE**  
**BURLINGTON**  
 ZONING SUBMISSION - NOT FOR CONSTRUCTION

**BTC MALL ASSOCIATES, LLC**  
 A PROJECT BY  
**DEVONWOOD INVESTORS, LLC**  
 DONA SNEY, MANAGING DIRECTOR

PROJECT NO: **A1947.00**  
 CONSULTANT PROJ. NO:  
 ORIGINATOR DATE: **10/15/2020** SCALE: **1/16" = 1'-0"**  
 DRAWN BY: **CL/NE/JC** CHECKED BY: **JR**  
 DATE TOC: **15 Oct 2020**  
 Submission Clarifications: **6 Jun 2021**  
 Rev. 2: **15 Jun 2021**

**EXTERIOR ELEVATIONS**

**A201**