

N/F CHRISTOPHER H. MASON
VOL. 900, PG. 679
PARCEL #049-2-017-000

N/F CITIZENS PROPERTIES, INC.
VOL. 879, PG. 74
PARCEL #053-1-006-000

N/F S&S VENDING CO.
VOL. 877, PG. 127
PARCEL #053-1-005-000

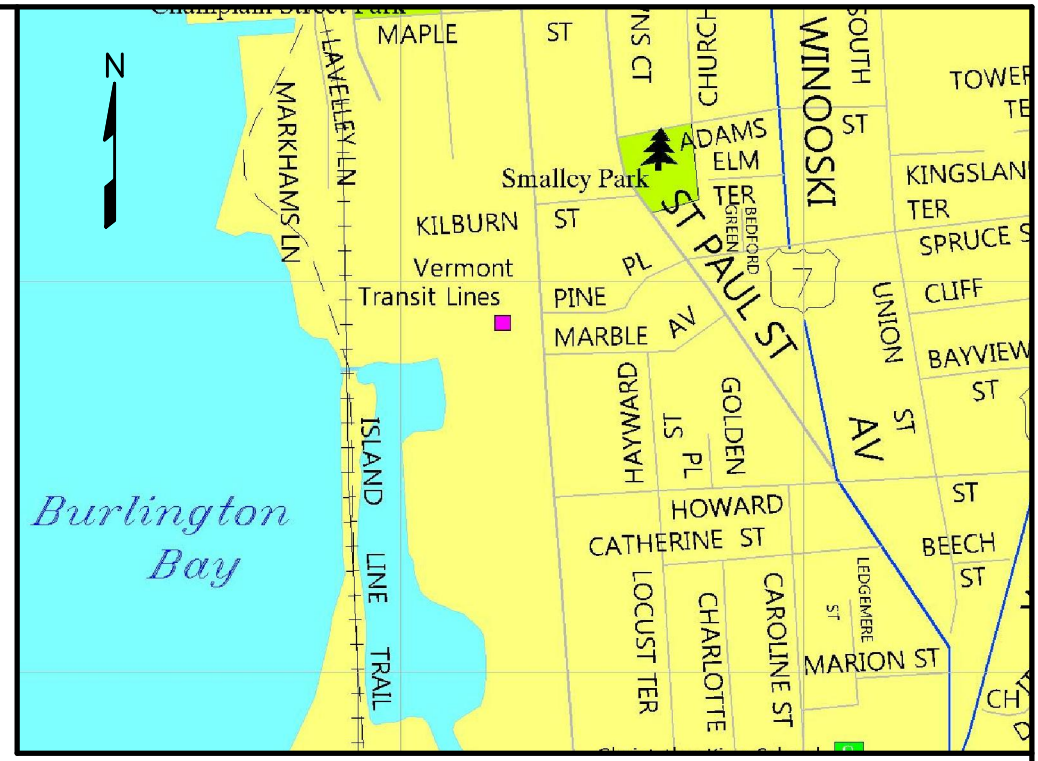
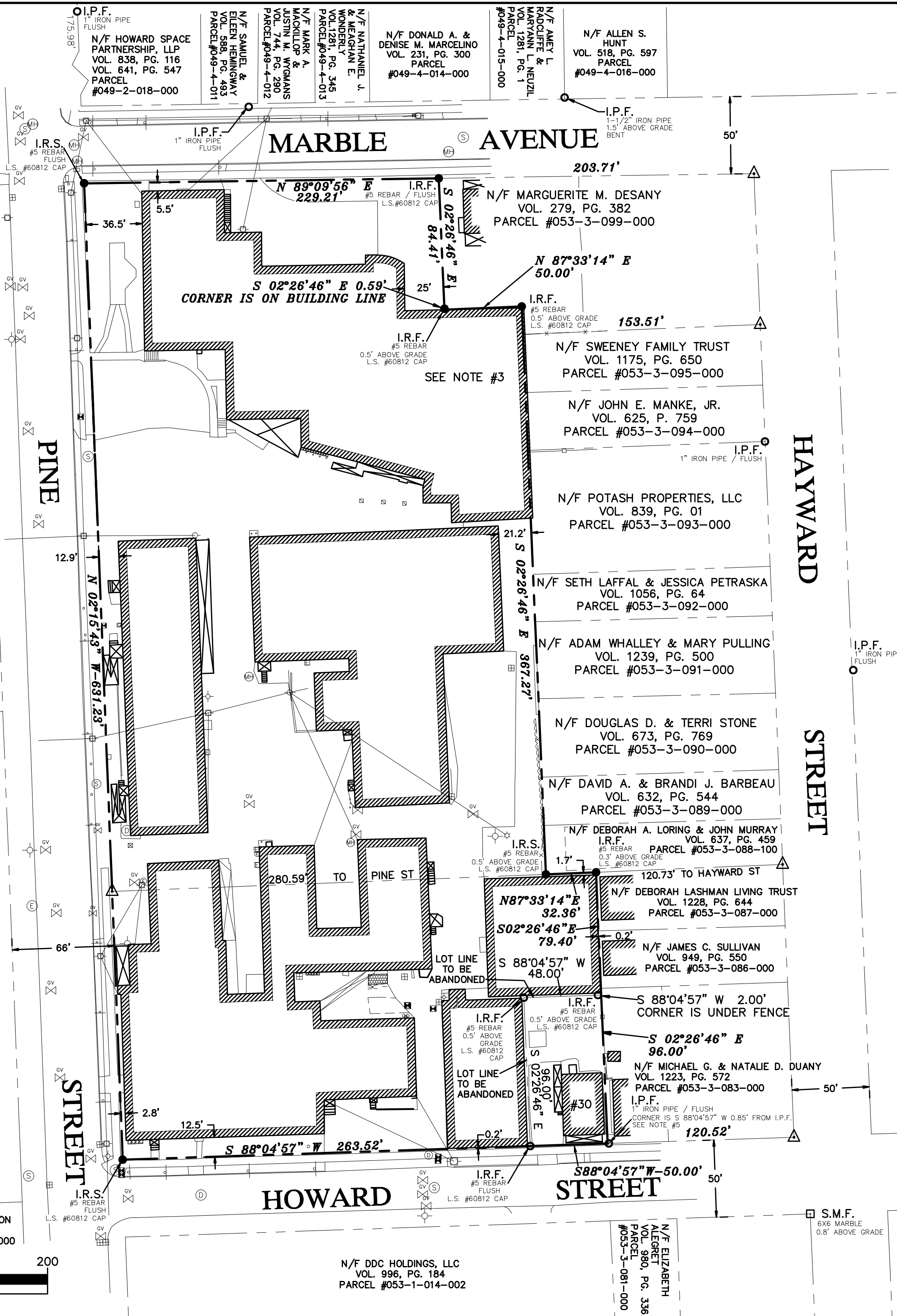
SUBJECT PARCELS
HOWARD SPACE PARTNERSHIP, LLP
VOL. 838, PG. 116
VOL. 616, PG. 547
PARCEL #053-3-082-000
4800± SQ. FT.
0.11± ACRES
PARCEL #053-1-015-100
172,752± SQ. FT.
3.97± ACRES
TOTAL NEW AREA AFTER MERGER:
177,552± SQ. FT.
4.08± ACRES
SEE REFERENCE #6 ON SH. 2 OF 2
SEE SHEET 2 OF 2 FOR
FOR NOTES & REFERENCES

N/F MALTEX PARTNERSHIP
VOL. 877, PG. 102
PARCEL #053-1-004-000

N/F CITY OF BURLINGTON
VOL. 877, PG. 64
PARCEL #053-1-003-000

N/F DDC HOLDINGS, LLC
VOL. 996, PG. 184
PARCEL #053-1-014-002

N/F ELIZABETH ALBERT
VOL. 980, PG. 336
PARCEL #053-1-081-000



LOCUS-NOT TO SCALE

LEGEND

- PROPERTY LINE
- - - RIGHT OF WAY OR PARCEL LINE
- x - WIRE FENCE
- o - WOOD FENCE
- I.R.F. IRON ROD FOUND
- I.P.F. IRON PIPE FOUND
- △ CALCULATED POINT
- S.M.F. STONE MONUMENT FOUND
- POLE
- HYDRANT
- ☆ LIGHT POLE
- - - GUY WIRE
- ⊠ CB RIM CATCH BASIN
- ⊙ S RIM SEWER MANHOLE
- ⊙ D RIM DRAIN MANHOLE
- ⊠ GATE VALVE
- ⊠ SIGN
- ⊠ GAS METER
- ⊠ GAS SHUT OFF
- ⊠ WATER SHUT OFF
- ⊠ ELECTRIC METER
- ⊠ ELECTRIC MANHOLE
- ⊠ MANHOLE
- ⊠ COMBINATION POLE

CERTIFICATION

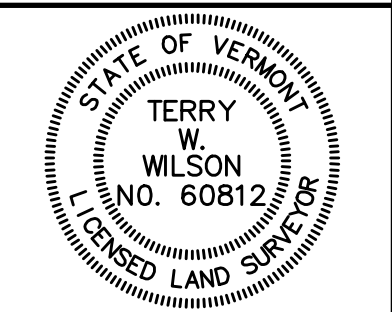
I CERTIFY THAT THE SUBJECT PARCEL BOUNDARIES SHOWN HEREON ARE TRUE TO THE BEST OF MY KNOWLEDGE AND BELIEF. SAID BOUNDARIES WERE DETERMINED FROM PERTINENT RECORDS AND RESOURCES AND EVIDENCE FOUND IN THE FIELD. THIS SURVEY WAS PERFORMED WITH AN ELECTRONIC TOTAL STATION WITH A POSITIONAL TOLERANCE LEVEL EXCEEDING 95%. I FURTHER CERTIFY THAT THIS PLAT MEETS ALL THE REQUIREMENTS OF TITLE 27 V.S.A. SECTION 1403.

DATED _____
PRELIMINARY
TERRY W. WILSON, L.S. #60812 VT

© COPYRIGHT 2017
PROJ. #17540
DATE: MARCH, 2017
SCALE: 1"=50'
SURVEYED BY: TWW/JMD
DRAWN BY: TWW/JMD
CHECKED BY: TWW

**MERGER OF LANDS OF
HOWARD SPACE PARTNERSHIP, LLP
30 HOWARD ST & 400 PINE ST
BURLINGTON, VERMONT**

SHEET 1 OF 2 DWG. # M-540



Vermont Mapping & Survey Co., LLC
8 Essex Way, Suite 200B
Essex Jct., VT 05452
(802) 857-5207
www.vermontmapping.com

I CERTIFY THAT THIS PLAT IS AN ORIGINAL INK ON MYLAR DRAWING. TERRY W. WILSON, L.S.

