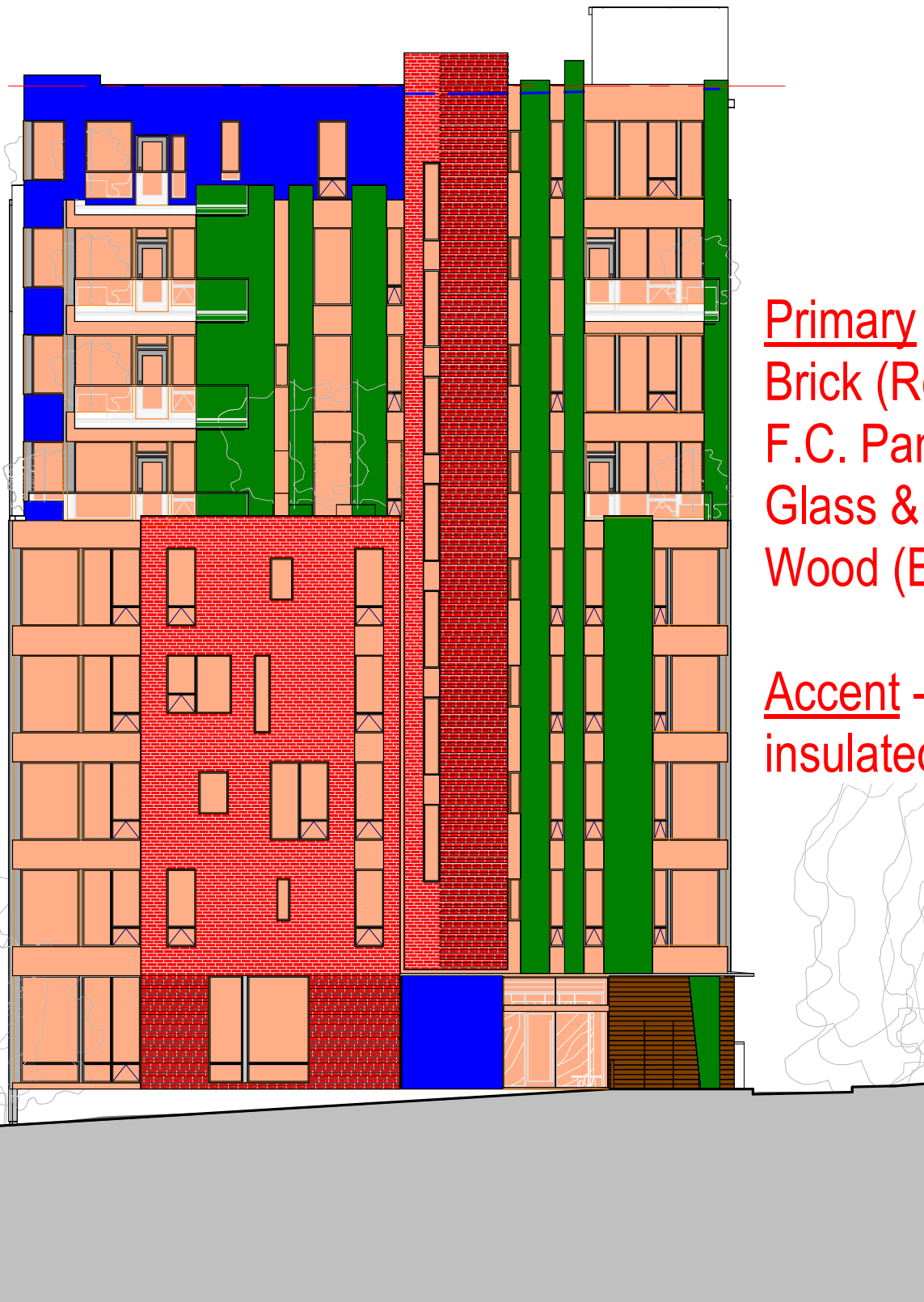


Roof area (red): 4,426 sf
HVAC Equip (blue): 324 sf (7%)

note: equipment cannot be seen from street.

- MAX. BLDG. HGT. (105')
- T.O. DECK - ROOF
101' - 10"
- LEVEL 9
91' - 0"
- LEVEL 8
80' - 0"
- LEVEL 7
69' - 0"
- LEVEL 6
58' - 0"
- LEVEL 5
47' - 0"
- LEVEL 4
36' - 0"
- LEVEL 3
25' - 0"
- LEVEL 2
14' - 0"
- LEVEL 1
0"
- LEVEL 0 P.G.
-10' - 0"



Primary - 82%
 Brick (Red)
 F.C. Panel (Blue)
 Glass & Spandrel (Orange)
 Wood (Brown)

Accent - 18%
 insulated Metal Panel (Green)