



Narrow Streets Implementation & Update

CITY OF BURLINGTON, BURLINGTON FIRE DEPARTMENT (BFD)

CITY OF BURLINGTON, DEPARTMENT OF PUBLIC WORKS (DPW)

Purpose & Background



- A. To balance community needs, BFD Emergency Services needs, and DPW Maintenance needs for sufficient mobility and access to narrow streets.
- B. Narrow Streets Policy drafted in January 2018
 1. Collaboration with BFD Emergency Services and DPW Winter Maintenance Team
 2. Presented to DPW Commission , January 17 2018
 3. Approved, March 8 2018
- C. Narrow Streets Recommendations Fall 2018
 1. Restrict Parking to one-side on Germain, Latham, and Hoover from December 1 to April 1
 2. Continue data collection efforts


Narrow Streets Criteria



1. 28 feet wide or less
2. 116 Narrow Streets in the City of Burlington
 - A. 95 of the 116 Narrow Streets have existing parking restrictions
 - B. BFD Emergency Services and DPW Winter Maintenance have determined 14 feet of effective travel width is the desired minimum width
 - a) 19 Narrow Streets currently have less than 14 feet of effective travel width with no existing restrictions

City Approach



1. Acknowledge challenge of balancing needs
 2. Incremental approach allows us to learn and adjust as we move forward
 3. We have addressed the most constrained narrow streets first
 4. Winter data collection efforts
- 

Data Collection



1. All Narrow Streets for future efforts
2. Adjacent Streets to Germain and Hoover
 - A. Germain, Alfred, Pomeroy, Hoover, Perrotta, and Ludwig
 - B. No substantial statistical changes on adjacent streets

Data Collection

Street Information	Previous Conditions	Current Conditions
Name	Occupancy Summer 2018	Occupancy Winter 2019
Germain St	69%	50%
Latham Ct	42%	56%
Alfred St	42%	25%
Charles St	48%	56%
Russell St	63%	63%
Pomeroy St	15%	22%
Gove Ct	9%	9%
Hoover St	22%	19%
Perrotta Pl	15%	10%
Ludwig Ct	37%	28%

Charles Street & Russell Street – Winter Condition




Charles Street & Russell Street – Winter Condition

1. See, Click, Fix

Snow Plowing ▸ Archived

17 Russell St Burlington, VT, 05401, USA • [Show on Map](#)

Issue ID: 5319342
Submitted To: Burlington, VT
Category: Snow Plowing
Viewed: 17 times
Neighborhood: [Burlington](#)
Reported: on 01/23/2019
Tagged: [snow](#)

REPORTER
Hughes
Civic Points: 95 

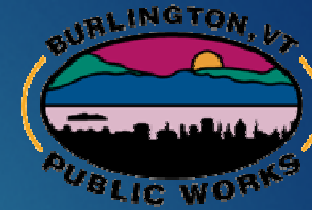
DESCRIPTION

Russell Street is nearly impassable if folks are parked on both sides of the street. There's no way fire or ambulance could get down the street. Thank you.

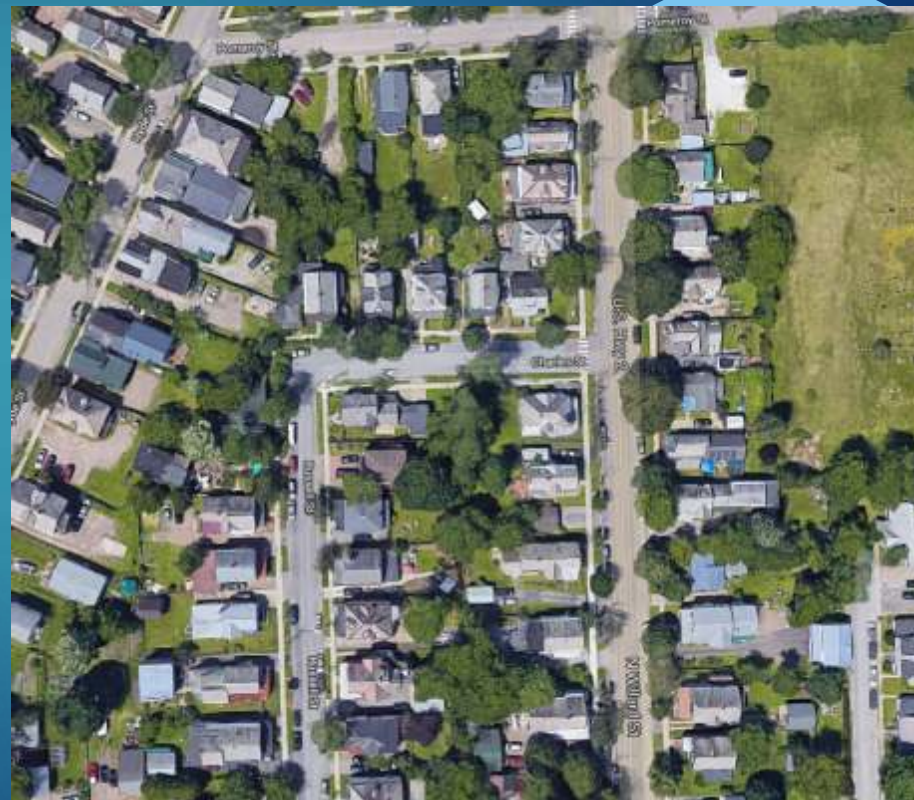
also asked...

Q. Is plowing required on the sidewalk, street or bikelane?
A. street

Charles Street - Statistics



- ▶ Location: Old North End
- ▶ One-way traffic (one lane)
- ▶ 26' wide
- ▶ Parking on both sides (16' total)
- ▶ Average occupancy rate: 48%



Charles Street - Observation

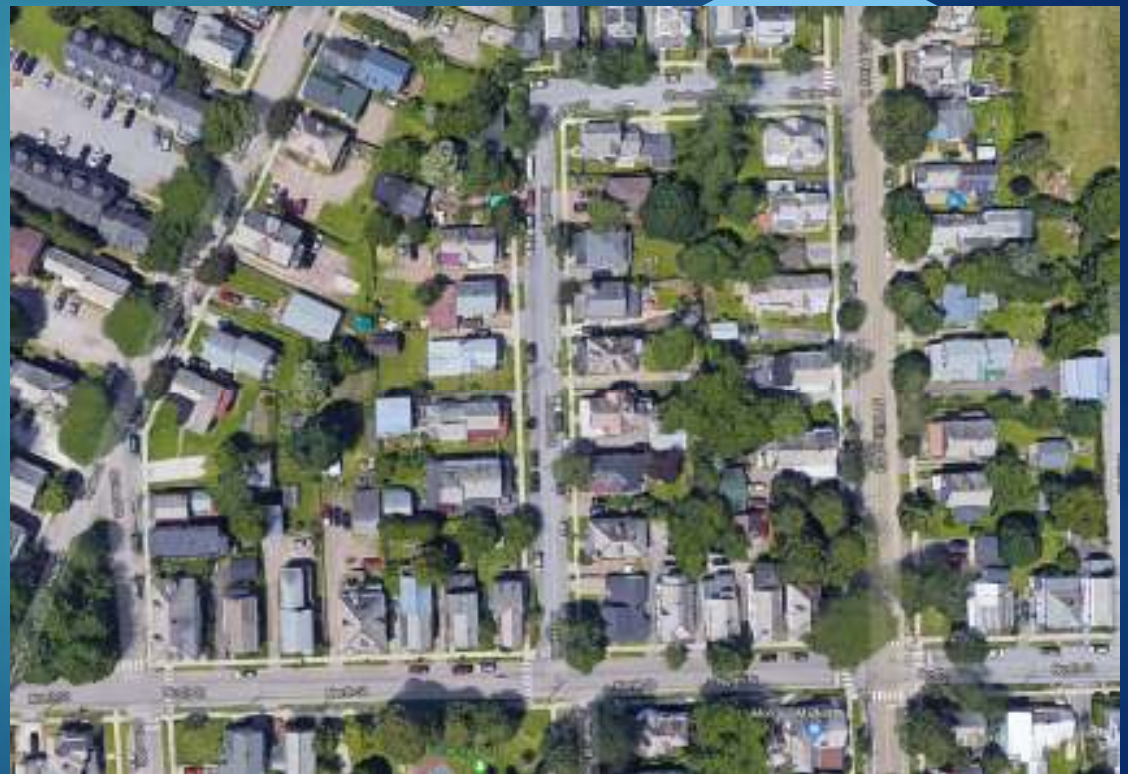
- ▶ 10' of existing roadway available for emergency vehicles during the winter
- ▶ Consideration: restrict parking on south side of street from December 1 to April 1 (left side in picture)



Russell Street - Statistics



- ▶ Location: Old North End
- ▶ One-way traffic (one lane)
- ▶ 26' wide
- ▶ Parking on both sides (16' total)
- ▶ Average occupancy rate: 63%



Russell Street - Observation

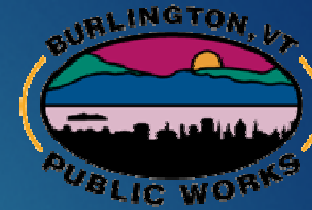
- ▶ 10' of existing roadway available for emergency vehicles during the winter
- ▶ Consideration: restrict parking on east side of street from December 1 to April 1 (left side in picture)



Timeline Narrow Streets



1. April 2019: Commission Narrow Streets Update on Winter Data Collection
2. Spring 2019: Russel and Charles Neighborhood Meeting
3. Summer 2019: Data Collection and Evaluation on other Narrow Streets
4. Autumn 2019: Staff Recommendations to DPW Commission Prior to Winter 2020



Questions?

Contact:

Phillip Peterson, Associate Engineer

Desk: 802.865.5832

Email: ppeterson@burlingtonvt.gov