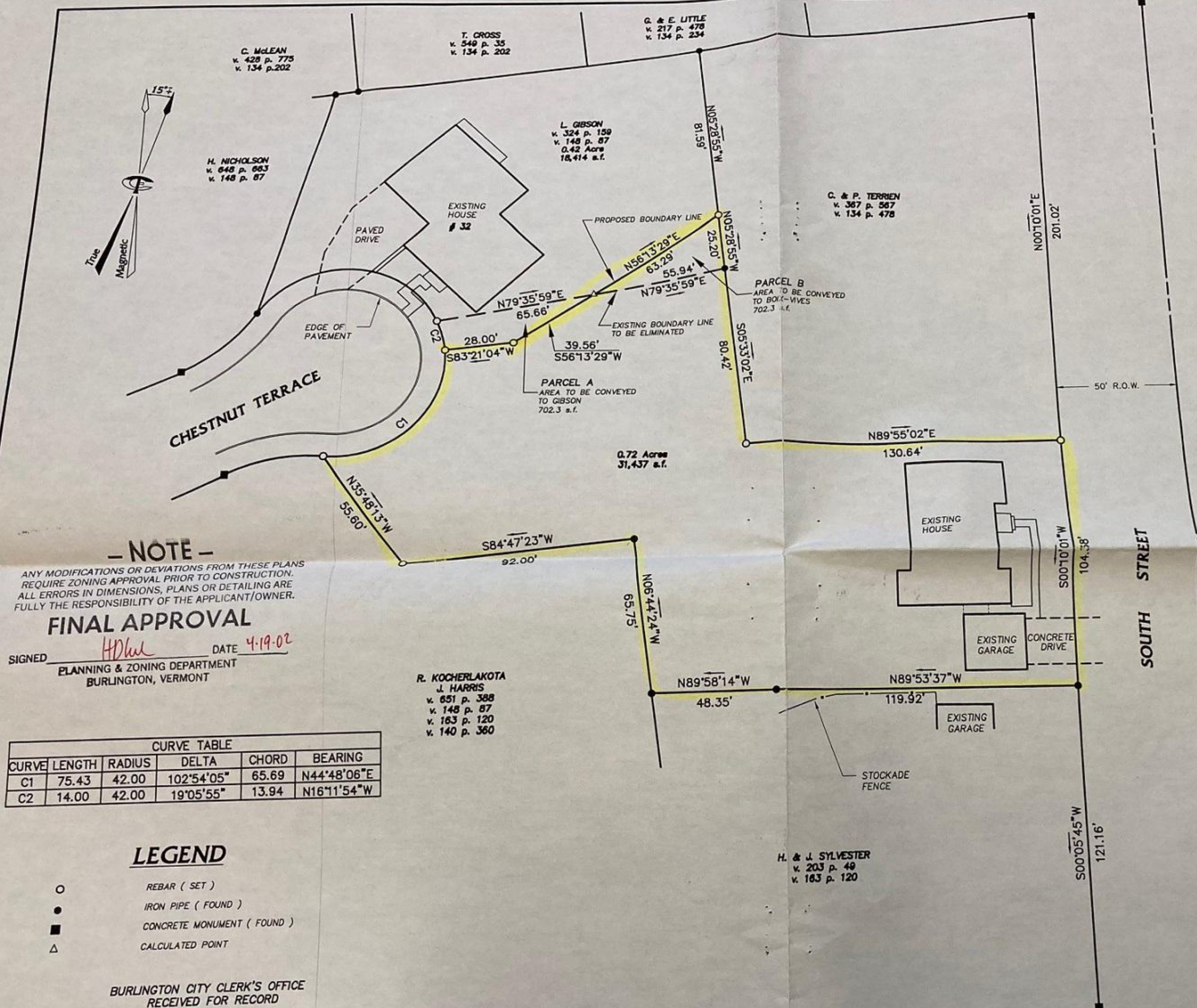


PROJECT LOCATION



**- NOTE -**  
 ANY MODIFICATIONS OR DEVIATIONS FROM THESE PLANS REQUIRE ZONING APPROVAL PRIOR TO CONSTRUCTION. ALL ERRORS IN DIMENSIONS, PLANS OR DETAILING ARE FULLY THE RESPONSIBILITY OF THE APPLICANT/OWNER.

**FINAL APPROVAL**  
 SIGNED HP DATE 4-19-02  
 PLANNING & ZONING DEPARTMENT  
 BURLINGTON, VERMONT

CURVE	LENGTH	RADIUS	DELTA	CHORD	BEARING
C1	75.43	42.00	102°54'05"	65.69	N44°48'06"E
C2	14.00	42.00	19°05'55"	13.94	N16°11'54"W

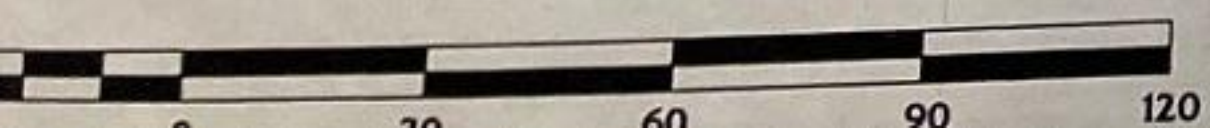
**LEGEND**

- REBAR ( SET )
- IRON PIPE ( FOUND )
- CONCRETE MONUMENT ( FOUND )
- △ CALCULATED POINT

BURLINGTON CITY CLERK'S OFFICE  
 RECEIVED FOR RECORD

\_\_\_\_\_ A.D. 19 \_\_\_\_\_  
 at \_\_\_\_\_ O'clock \_\_\_\_\_ minutes \_\_\_\_\_ m  
 and recorded in plat hanger # \_\_\_\_\_  
 Attest: \_\_\_\_\_ City Clerk

Graphic Scale



ADD BOUNDARY ADJUSTMENT 12/12/01 SDT

Revisions	Description	Date	By

ZONING DISTRICT - RL (RESIDENTIAL LOW DENSITY)

	LOT COVERAGE	
	EXISTING	PROPOSED
GIBSON	24.0%	24.0%
BOIX-VIVES	11.5%	11.5%

- THIS PLAT IS BASED ON THE FOLLOWING:
- 1) DEEDS RESEARCHED ON 11/10/98 IN THE CITY OF BURLINGTON LAND RECORDS.
  - 2) A CLOSED FIELD TRAVERSE CONDUCTED WITH A TOTAL STATION ON 11/18/98.
  - 3) BEARINGS ARE BASED ON MAGNETIC NORTH TAKEN ALONG A LINE OF THE TRAVERSE.
  - 4) REBAR SET ARE NO. 5 REINFORCING BAR WITH ALUMINIUM CAPS. THIS PARCEL BEING THE LAND CONVEYED TO LAURENT BOIX-VIVES VOLUME 227 PAGE 702.
  - 5) AN ATTEMPT HAS BEEN MADE TO IDENTIFY OR DELINEATE EASEMENTS, RIGHTS OF WAY, LEASE LANDS, ENCROACHMENT ETC. OBSERVED IN THE FIELD OR READILY FOUND IN THE LAND RECORDS. ADDITIONAL ENCUMBRANCES MAY EXIST WHICH ARE NOT SHOWN ON THIS PLAT.

RECEIVED

APR 17 2002

DEPT. OF PLANNING & ZONING



**Boundary Line Adjustment**  
**LAURENT BOIX-VIVES**  
 41 South Street, Burlington, Vt.

**TRUDELL CONSULTING ENGINEERS, INC.**  
 14 Blair Park Road Box 308 Williston, Vermont 05495 879-6331

Project number 98076  
 Project mgr. SDT  
 Date 12/04/98  
 Field Book 164