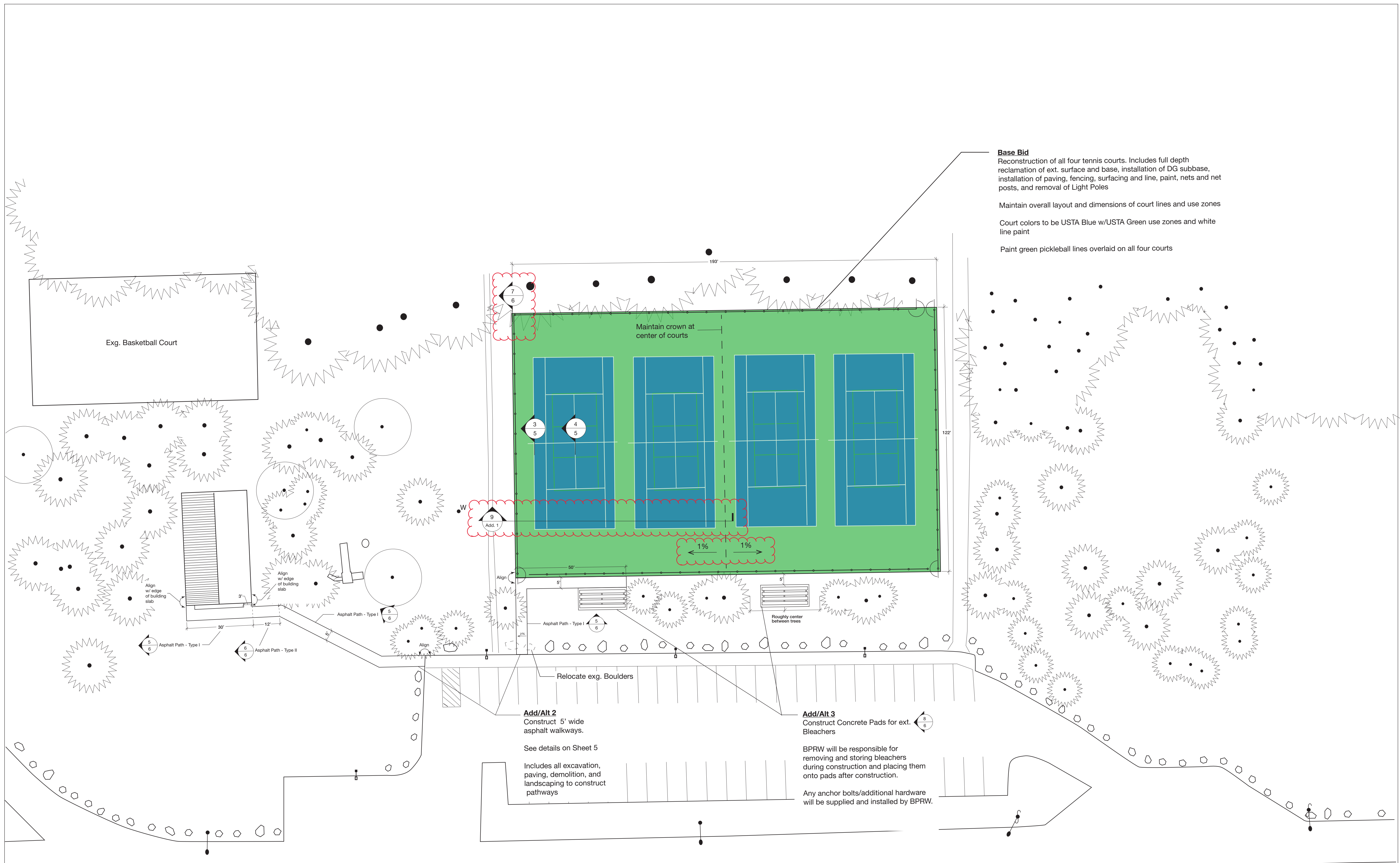


Leddy Park
Tennis Court
Reconstruction

216 Leddy Park Rd.
Burlington, VT 05401



Base Bid

Reconstruction of all four tennis courts. Includes full depth reclamation of ext. surface and base, installation of DG subbase, installation of paving, fencing, surfacing and line, paint, nets and net posts, and removal of Light Poles

Maintain overall layout and dimensions of court lines and use zones

Court colors to be USTA Blue w/USTA Green use zones and white line paint

Paint green pickleball lines overlaid on all four courts

Add/Alt 2
Construct 5' wide asphalt walkways.
See details on Sheet 5

Includes all excavation, paving, demolition, and landscaping to construct pathways

Add/Alt 3
Construct Concrete Pads for ext. Bleachers

BPRW will be responsible for removing and storing bleachers during construction and placing them onto pads after construction.

Any anchor bolts/additional hardware will be supplied and installed by BPRW.

Site Plan
Sheet 4 of 6

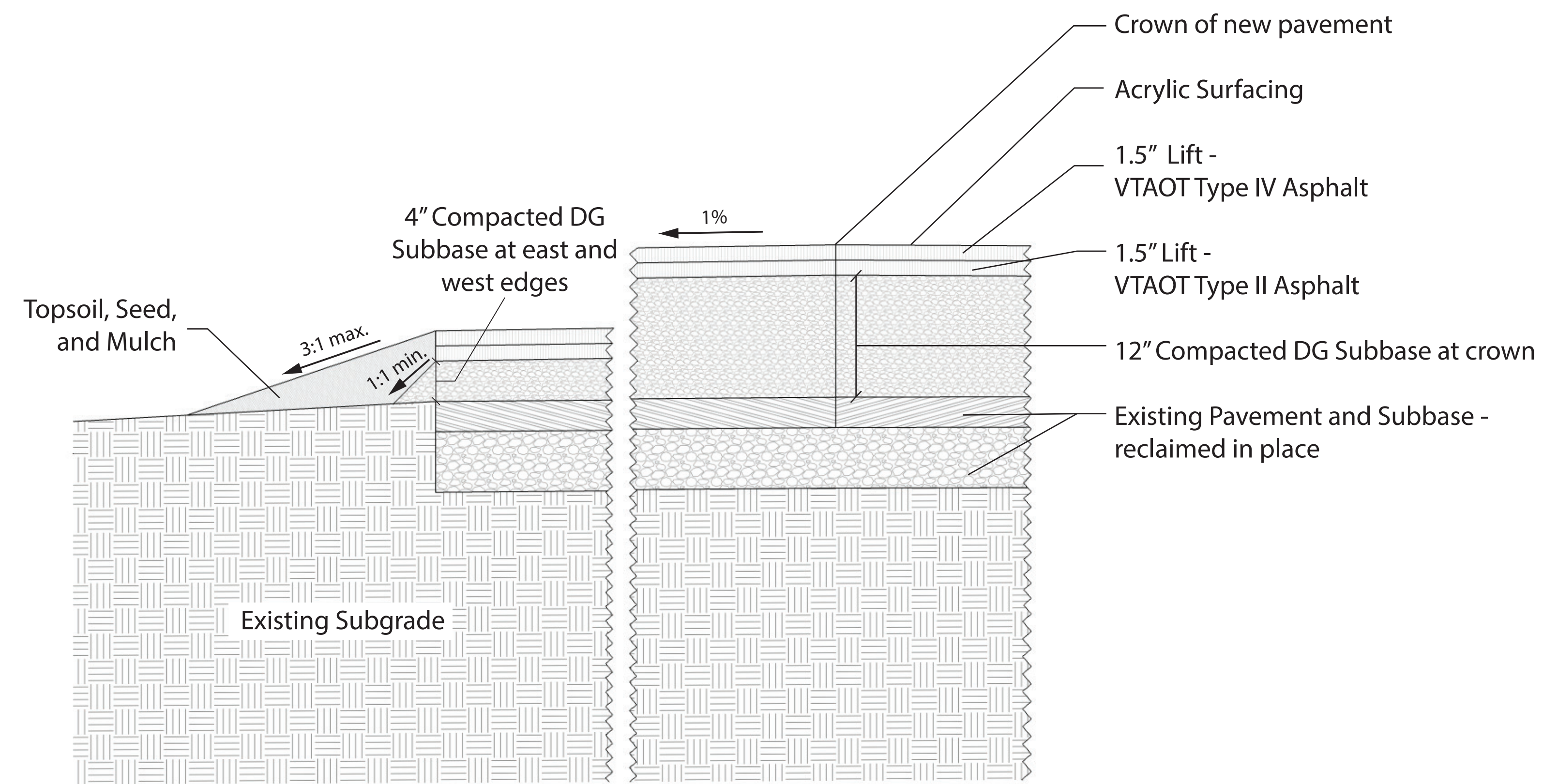
Prepared by:

Max Madalinski
Parks Project Coordinator
mmadalinski@burlingtonvt.gov
(802)881-4000

Revision 1:
January 28, 2020



645 Pine St, Suite B.
Burlington, VT 05401



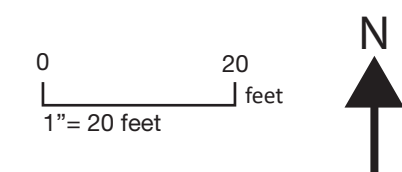
9 Court Reconstruction Cross Section (N.T.S.)

Site Details
Addendum 1

Prepared by:

Max Madalinski
Parks Project Coordinator
mmadalinski@burlingtonvt.gov
(802)881-4000

January 28, 2020



645 Pine St, Suite B.
Burlington, VT 05401