

Welcome to CityPlace Burlington

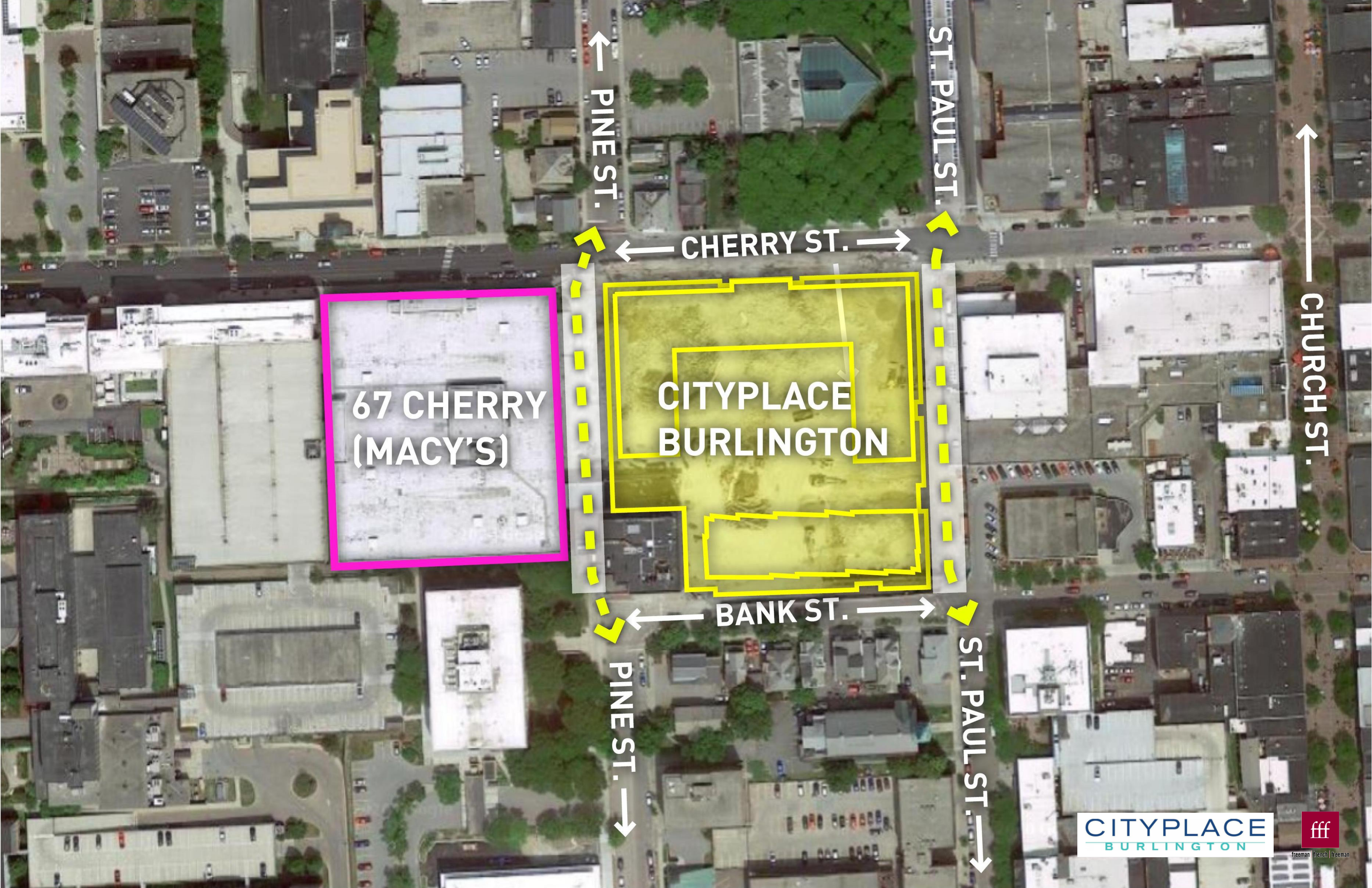
PROJECT REDESIGN SESSION



CITYPLACE
BURLINGTON

fff

freeman french freeman
24 JAN. 2020



← PINE ST.

ST. PAUL ST.

↑ CHURCH ST.

← CHERRY ST. →

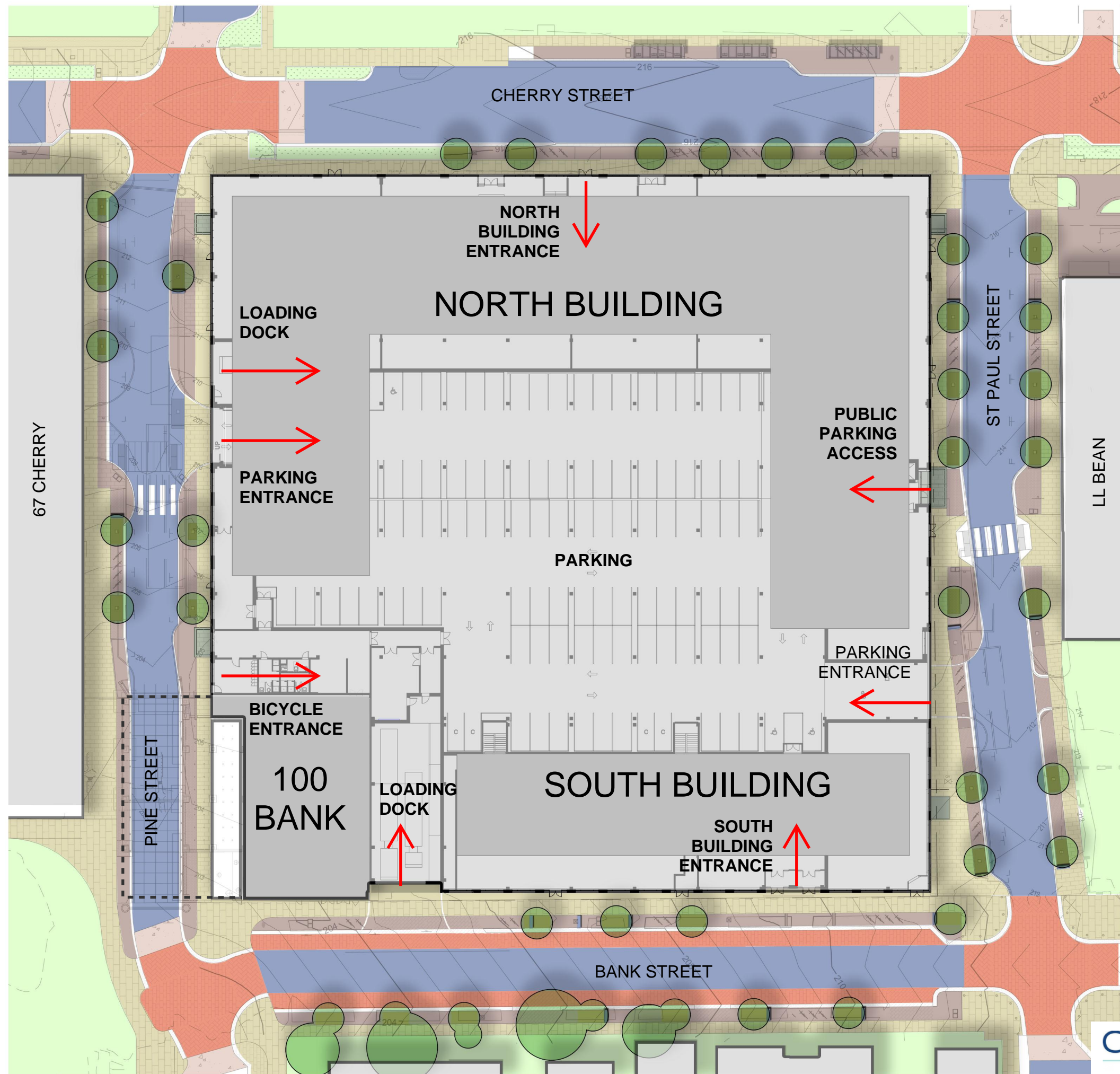
67 CHERRY
(MACY'S)

CITYPLACE
BURLINGTON

← BANK ST. →

PINE ST. →

ST. PAUL ST. →



CityPlace Burlington- Program Summary

- ❑ 357 Housing units, including 72 affordable units
- ❑ 196 Room Hotel
- ❑ 45,000sf of Street Level Retail
- ❑ Reconnect St Paul and Pine Streets
- ❑ 550 Parking spaces (297 bike parking spaces)
- ❑ 763,200 total gross square feet

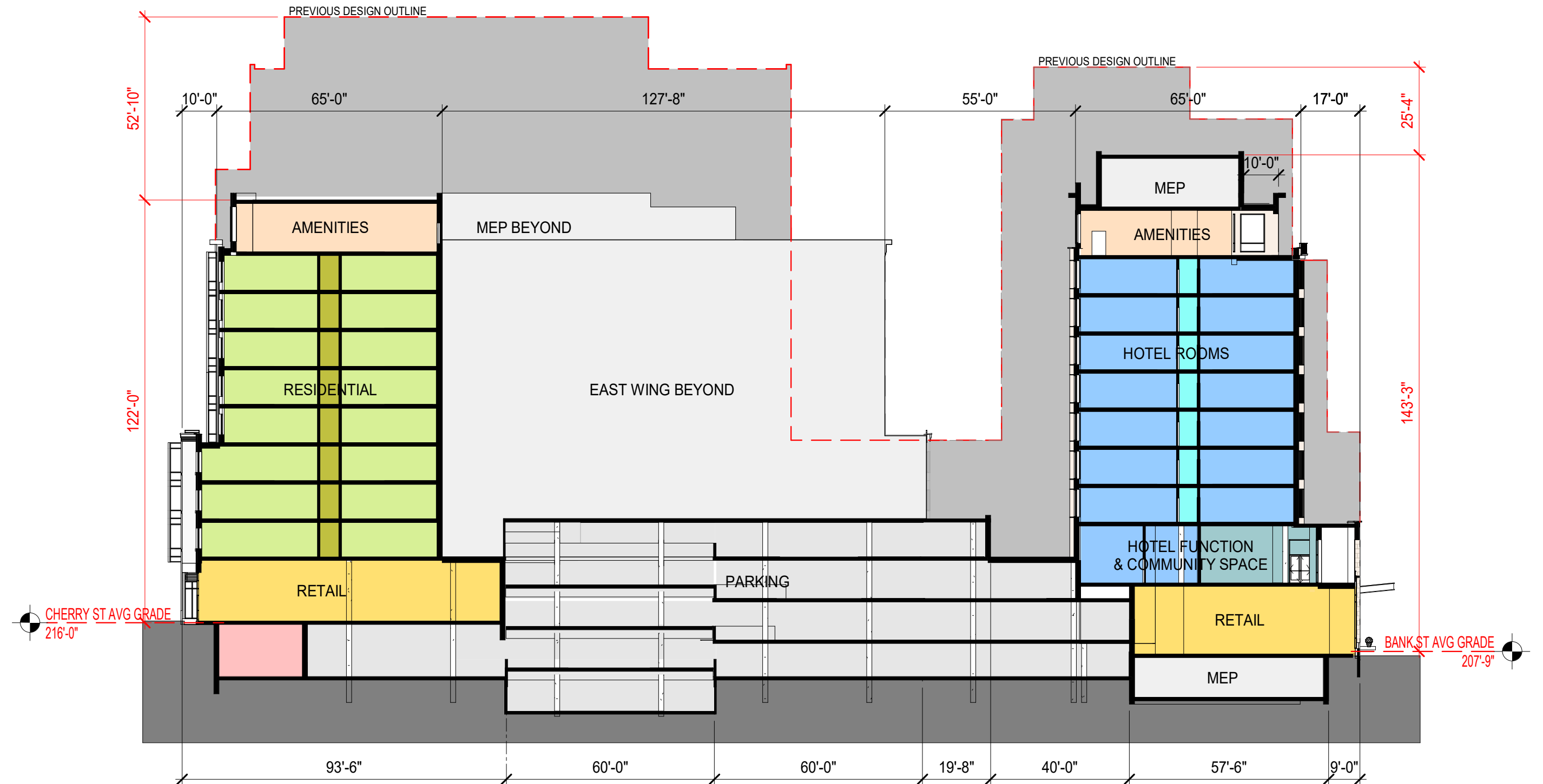






NORTH BUILDING

SOUTH BUILDING



PR-300a

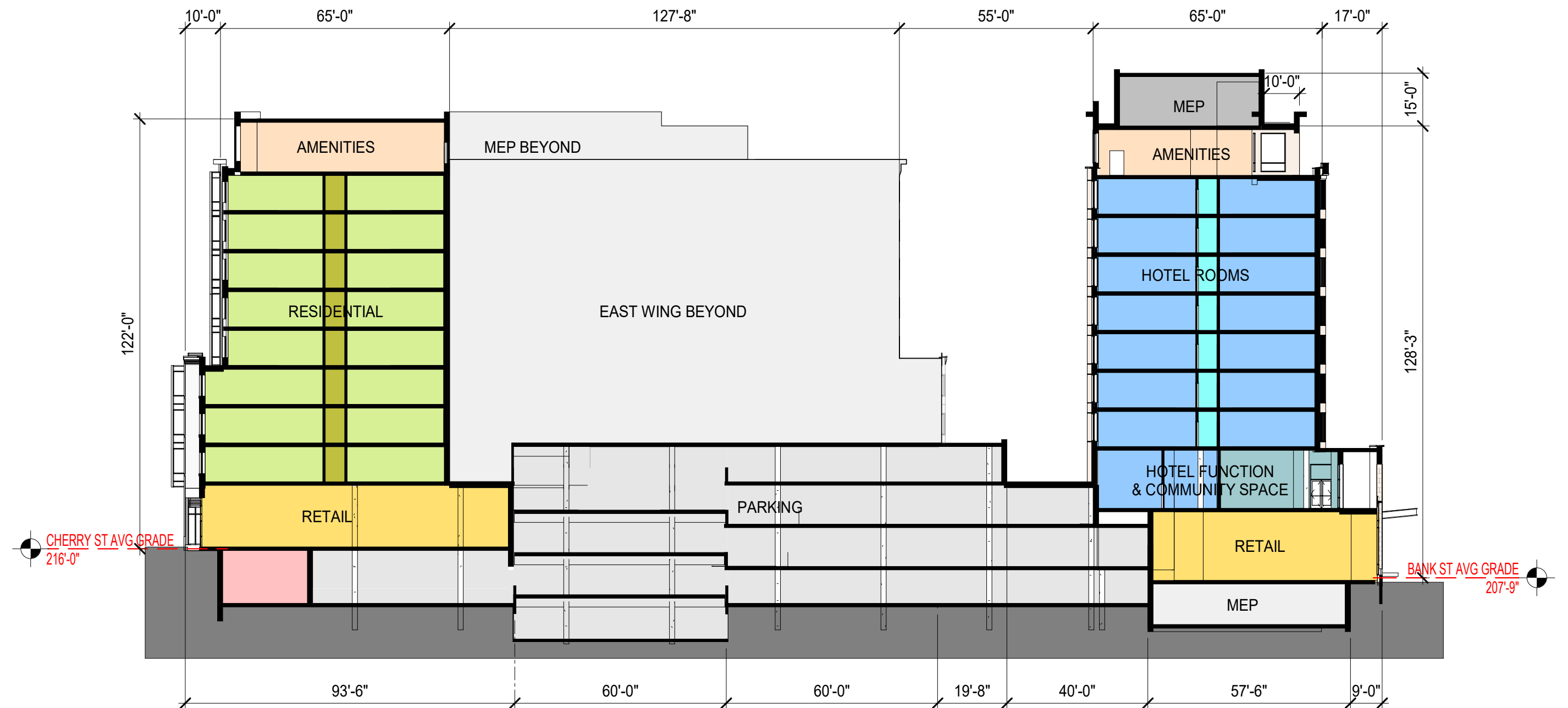
N-S SECTION

LOOKING EAST

SCHEMATIC DESIGN

NORTH BUILDING

SOUTH BUILDING



PR-300

N-S SECTION

LOOKING EAST

SCHEMATIC DESIGN



CITYPLACE
BURLINGTON



CITYPLACE
BURLINGTON



Burl Gallery

KBC

CITYPLACE
BURLINGTON

fff
freeman french freeman





CITYPLACE
BURLINGTON



freeman, french, freeman



PUBLIC BENEFITS

- ☐ **More downtown housing, including affordable units**
- ☐ **Two reconnected public streets - Pine and St. Paul**
- ☐ **Sustainable Design**
 - LEED Gold certification**
 - Green roof areas and Solar PV panels**
 - 100% treatment of stormwater runoff from site**
- ☐ **Community Access**
 - Community Meeting Space**
 - Observation deck open to the public**
 - Bike Parking**
- ☐ **Enhanced Grand List & Rooms and Meals tax revenues**



FIN.