



**CITY OF BURLINGTON
DEPARTMENT OF PUBLIC WORKS**

645 Pine St. Suite A
Burlington, VT 05401
802.864.0166 VOX
802.863-0466 FAX
802.863.0450 TTY

Chapin Spencer
DIRECTOR OF PUBLIC WORKS

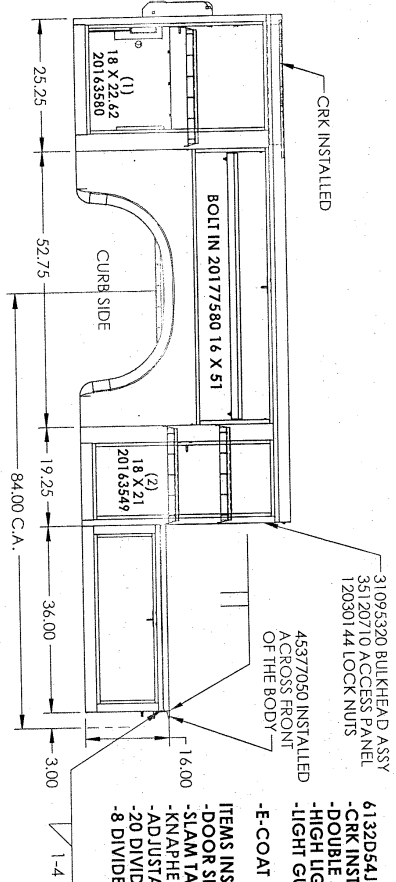
Dave Hammond
FLEET MANAGER

The City of Burlington respectfully requests a quote on a new 19,000gvw truck. Try to meet the following specifications as close as possible. Explain any exceptions to the specifications and identify any proposed alternatives. Please include delivery time. Quotes can be emailed to Dhammond@burlingtonvt.gov or mailed to Attention: Dave Hammond, Burlington Public Works 645 Pine Street, Burlington VT 05401. All quotes must be received by 6/30/22. All quotes must be valid for a minimum of 180 days. If not, clearly state the length that the quote is valid for. The City of Burlington, VT has the right to accept or refuse any and all quotes. The City of Burlington has right to award the contract to the vendor that best suits the needs of the City of Burlington. Any question please contact Dave Hammond at 802-865-7243 or DHammond@burlingtonvt.gov

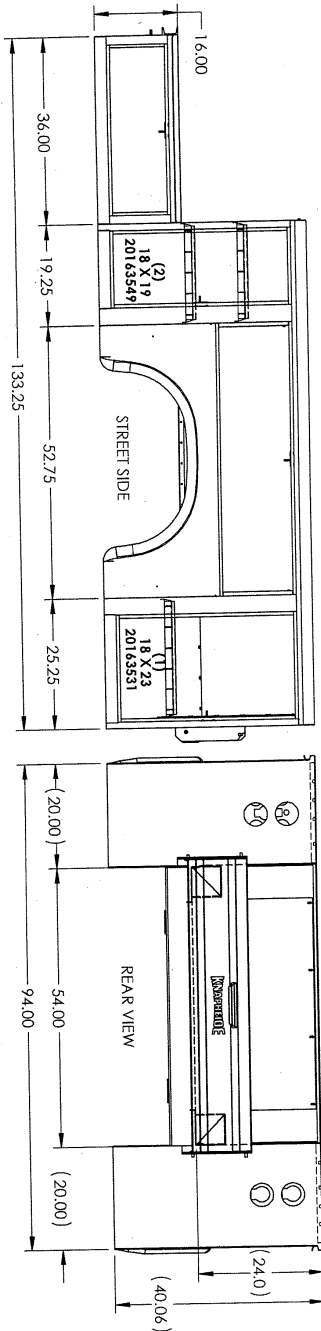
- 165" wheelbase 84" cab to axle
- Dual rear wheels
- V-8 gasoline engine
- Largest capacity alternator available
- Automatic transmission
- Limited slip rear axle
- 225/70R19.5 tires (all terrain)
- Spare tire and wheel
- Heavy duty vinyl bench seat
- Air conditioning
- Vinyl floor covering
- Power windows, locks, mirrors
- Bluetooth
- Backup camera
- 3 spare keys
- Cab steps
- Trailer tow package
- Integrated trailer brake controller
- Exterior color Forest Green Metallic preferred. List available color options
- Upfitter switches
- Vermont Municipal registration, title, lien and all related fees

SERVICE BODY:

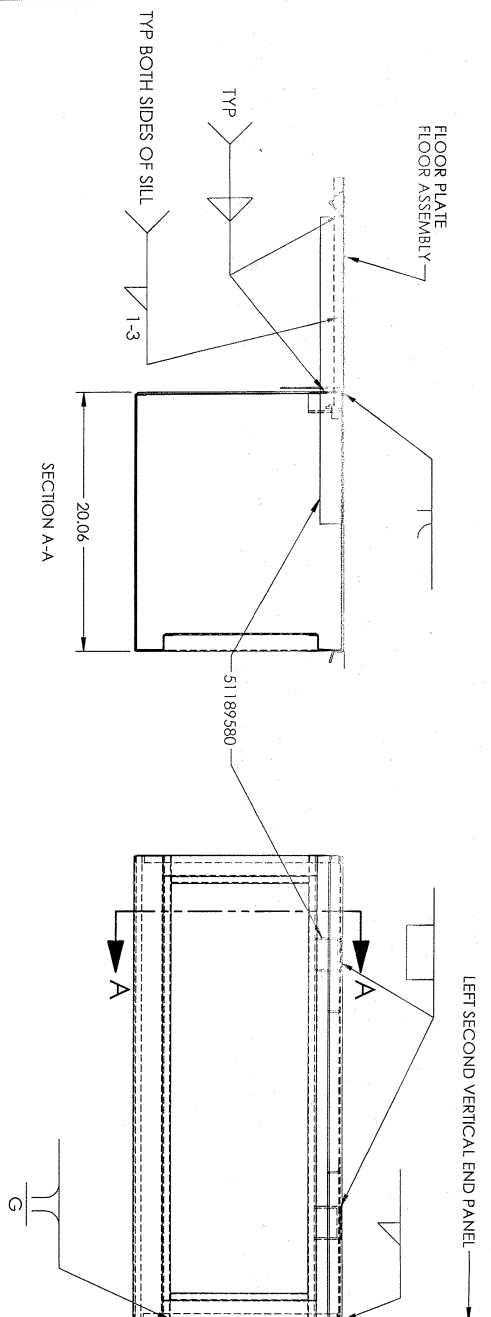
- 36" space between cab and body to fit a chassis mounted air compressor. The space under the compressor to have tool compartments
- Standard compartment layout with standard amount of shelves
- Stainless steel door latches and hinges
- Galvanneal steel construction
- Crane reinforcement on right rear corner of body.
- Rear bumper, extra heavy duty, deck plate and recess,
- Safety cone holders fabricated for front and rear bumpers.
- Welded Peg mounted in the cargo area for a jack hammer to mount
- Combination pintle hook with 2" ball
- Strobe lights (Whelen LED) front hideaways (amber Vertex series)
- One roof mounted L31 amber strobe
- One strobe light recessed into each side of rear of body
- (1) LED work light mounted on the right rear of the body
- Backup alarm.
- Stop,tail and turn lights mounted in the body
- License plate bracket
- RV style 7 wire trailer connector with flat terminals.
- Undercoating
- Painted ,color to match truck (color to be determined)
- Sprayed on bed liner on top of body, top of rear bumper and the exterior cargo area.
- Electric crane, approximately 2700 lb. lift capacity. Hydraulic telescoping,
- Rotation, lift and extend to be controlled by pendent.(remote)
- Tool racking and storage built above left side of body as picture shown, overall height of shelves is 28"
- Hooks to hold ladder on drivers side of body, mounted onto the shelving unit, mounted at an angle so tail end of ladder is above 6'
- All wiring to be weather proof ,circuit protected and labeled.
- Blueprints of body are below



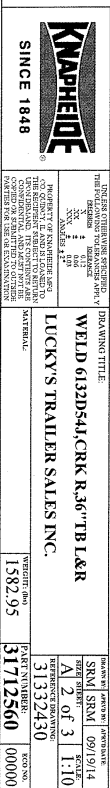
- 6132D54J BODY WELDMENT
- CRK INSTALLED IN CURB-SIDE REAR COMPARTMENT.
- DOUBLE SPRING DOOR RETAINERS INSTALLED.
- HIGH LIGHT HOLES PER 20001053.
- LIGHT GUARDS INSTALLED EACH REAR END PANEL.
- E-COAT PRIME AND UNDERCOAT
- ITEMS INSTALLED AFTER E-COAT.
- DOOR SEAL INSTALLED.
- SLAM TAILGATE INSTALLED.
- KNAPHEIDE NEXT GENERATION ROTARY LATCHES INSTLD.
- ADJUSTABLE AND BOLT IN SHELVING AS SHOWN.
- 20 DIVIDERS FOR VERT SHELVES 20170510.
- 8 DIVIDERS FOR HORIZ SHELF 20170502.

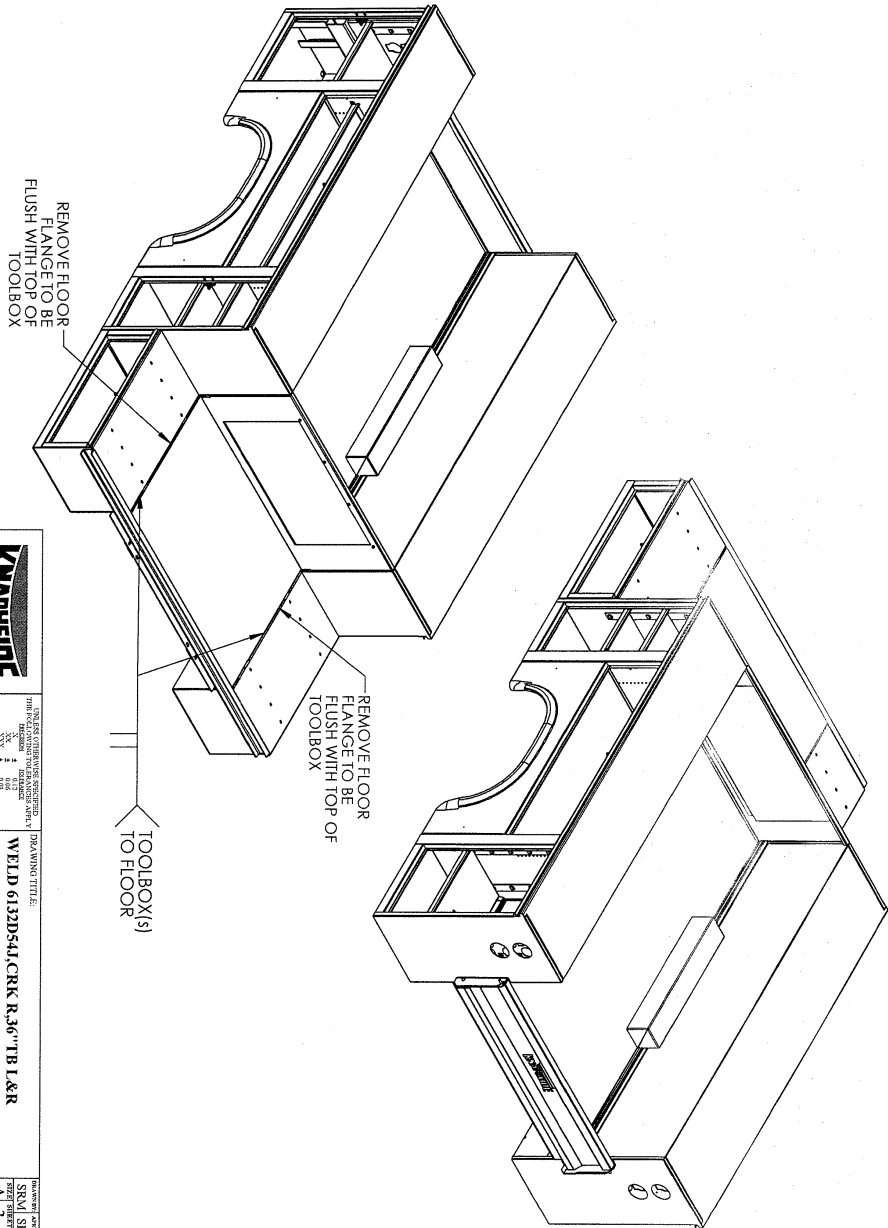



KNAPHEIDE SINCE 1848	THIS DRAWING IS THE PROPERTY OF LUCKY'S TRAILER SALES INC. IT IS TO BE USED FOR THE TRAILER SPECIFICALLY IDENTIFIED HEREIN. IT IS NOT TO BE REPRODUCED OR USED FOR ANY OTHER PURPOSE WITHOUT THE WRITTEN PERMISSION OF LUCKY'S TRAILER SALES INC.	
	DRAWING TITLE: WELD 6132D54J/CRK R.36"TB L&R LUCKY'S TRAILER SALES INC.	DRAWN BY: SRM CHECKED BY: SRM DATE: 09/19/14 SCALE: 1:25 SHEET: 1 of 3 PART NUMBER: 31332430
	WEIGHT: 1582.95 PART NUMBER: 31712560	KGS: 3500 PART NUMBER: 000000



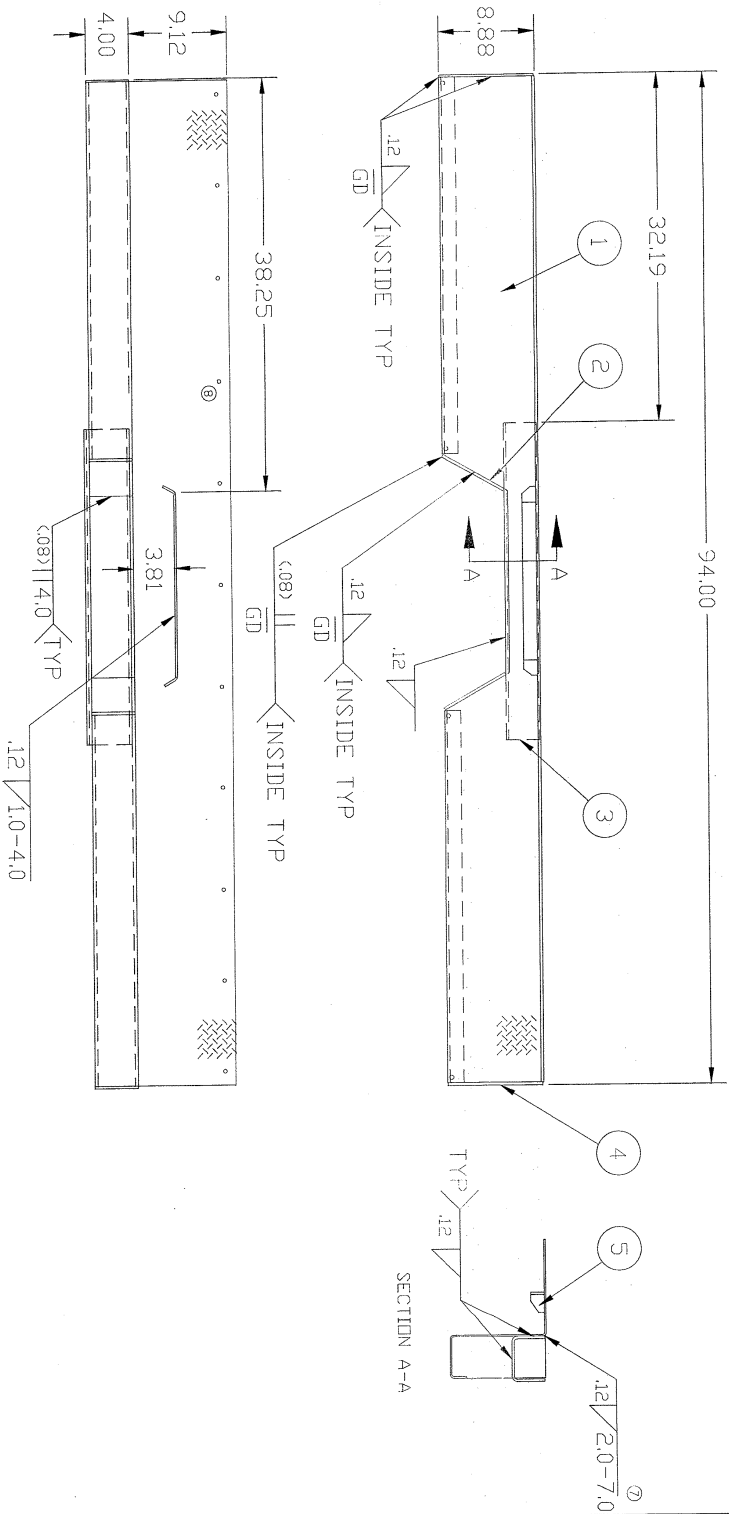
SLIDE SILL 51189580 INTO SLOTS PROVIDED IN THE BACK PANEL OF THE TOOLBOX BEFORE POSTIONING AND INSTALLING THE TOOLBOX ON THE BODY. AFTER POSTIONING THE TOOLBOX ON THE BODY WELD 51189580 TO THE FLOOR ASSEMBLY AND INTERIOR OF TOOLBOX.





 SINCE 1848		THIS DRAWING IS THE PROPERTY OF Knapheide, Inc. and is to be used only for the purpose intended. It is not to be reproduced, stored in a retrieval system, or transmitted, in any form or by any means, electronic, mechanical, photocopying, recording, or by any information storage and retrieval system, without the prior written permission of Knapheide, Inc.	
DRAWING TITLE: WELD 612D541CRK R.36" TB L&R LUCKY'S TRAILER SALES INC.		DATE: 09/19/14 BY: A 3 of 3 REVISION: 31332430	
MATERIAL: 1582.95		PRICE: 31712560	

26 05 033 6



THE KNAFFHIDE MFG CO			
QUINCY, ILLINOIS			
TITLE		BUMPER ASS'Y 94B	
W/RECESS		J MODEL	
MATERIAL		SCALE	
DRAWN BY & DATE		CHECKED BY & DATE	
JLS 5-19-98		20 05 457 3	
ENT. BY: JLB		SHEET 1 OF 1	
1069		26 05 033 6	

UNLESS OTHERWISE SPECIFIED, THE FOLLOWING TOLERANCES APPLY			
X ± .12			
XX ± .06			
XXX ± .03			
ANGLES ± 2°			
PROPERTY OF THE INVENTOR. NO PART OF THIS DRAWING IS TO BE REPRODUCED OR TRANSMITTED IN ANY FORM OR BY ANY MEANS, ELECTRONIC OR MECHANICAL, INCLUDING PHOTOCOPYING, RECORDING, OR BY ANY INFORMATION STORAGE AND RETRIEVAL SYSTEM, WITHOUT PERMISSION IN WRITING FROM THE INVENTOR.			
REVISIONS			
NO.	CHANGE	BY	DATE
6	ECN 9329	JLS	5-19-98
7	9900	JLB	4/4/01
8	1006	JLB	8/8/01

REDRAWN				
5	1	20 05 251	04OFF	SHROUD R.I.D.
4	2	20 05 249	44OFF	END CAP
3	1	20 05 425	04OFF	CHANNEL
2	2	20 05 247	84OFF	COVER
1	1	26 05 063	3	STEP PLATE
ITEM	QTY.	PART NUMBER	DESCRIPTION	

