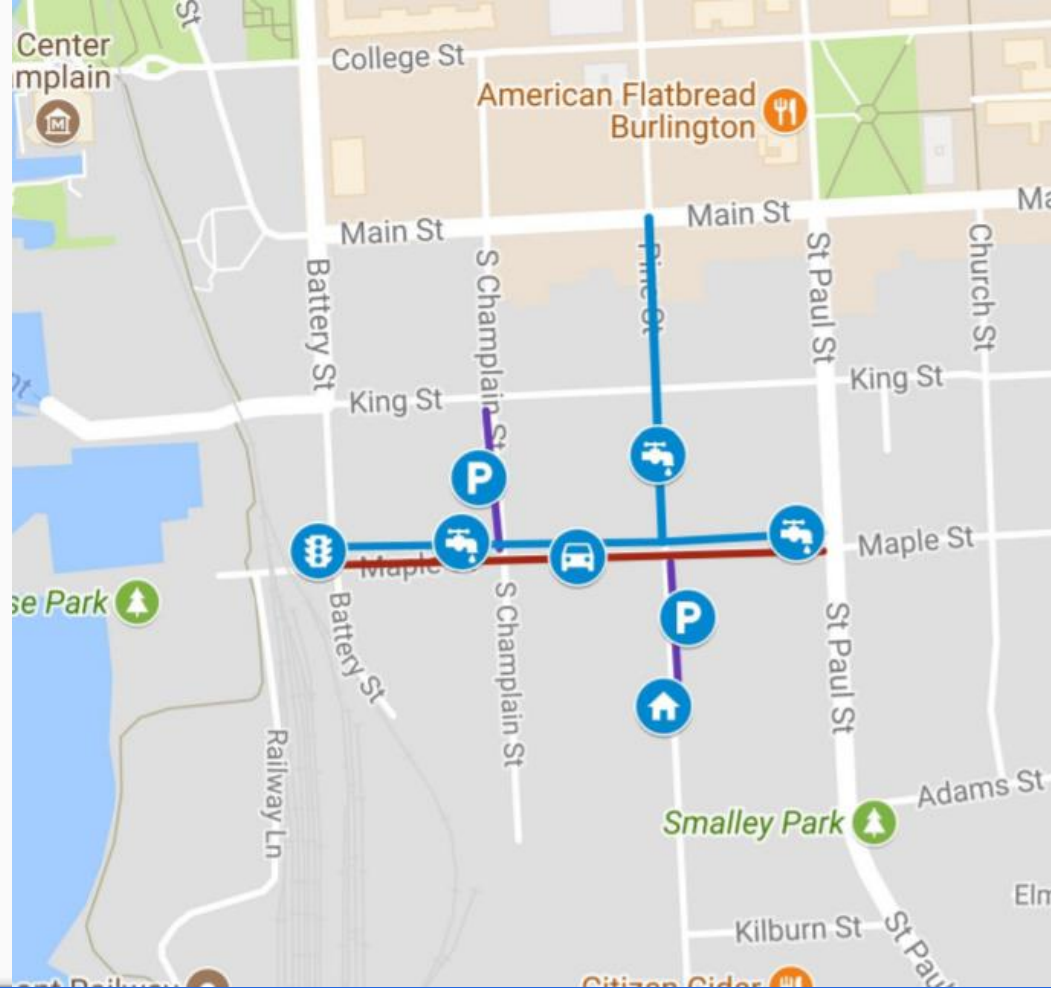


Lower Downtown Sustainable Infrastructure

14 March 2018



- 3 Water Mains
 - Pine: Main -> Maple
 - Maple: Battery -> Pine
 - Maple: Pine -> St. Paul
- Paving
 - Maple: Battery -> St. Paul
- Traffic Intersection
 - Battery & Maple



OVERVIEW


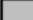
Sustainable Infrastructure

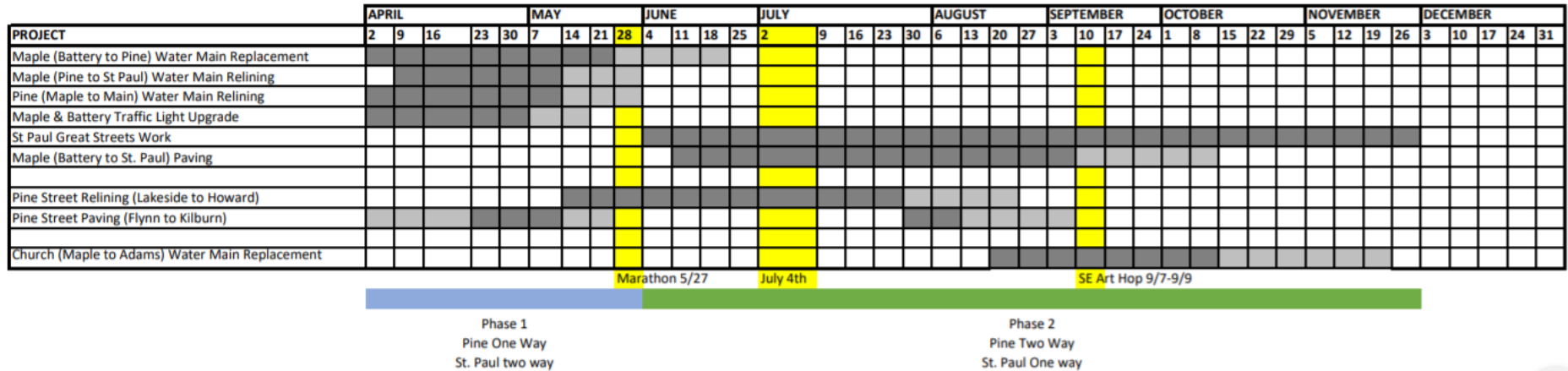
- Previous Under-Investment
 - 42% of water mains older than 75 years; 25% older than 100 years
- 2016: Infrastructure Bonds
 - Water Infrastructure
 - Capital Infrastructure
- Sustainable Infrastructure Plan
 - Coordinated Investments
 - Sustainable Schedule for Asset Replacement
 - Preventative Maintenance

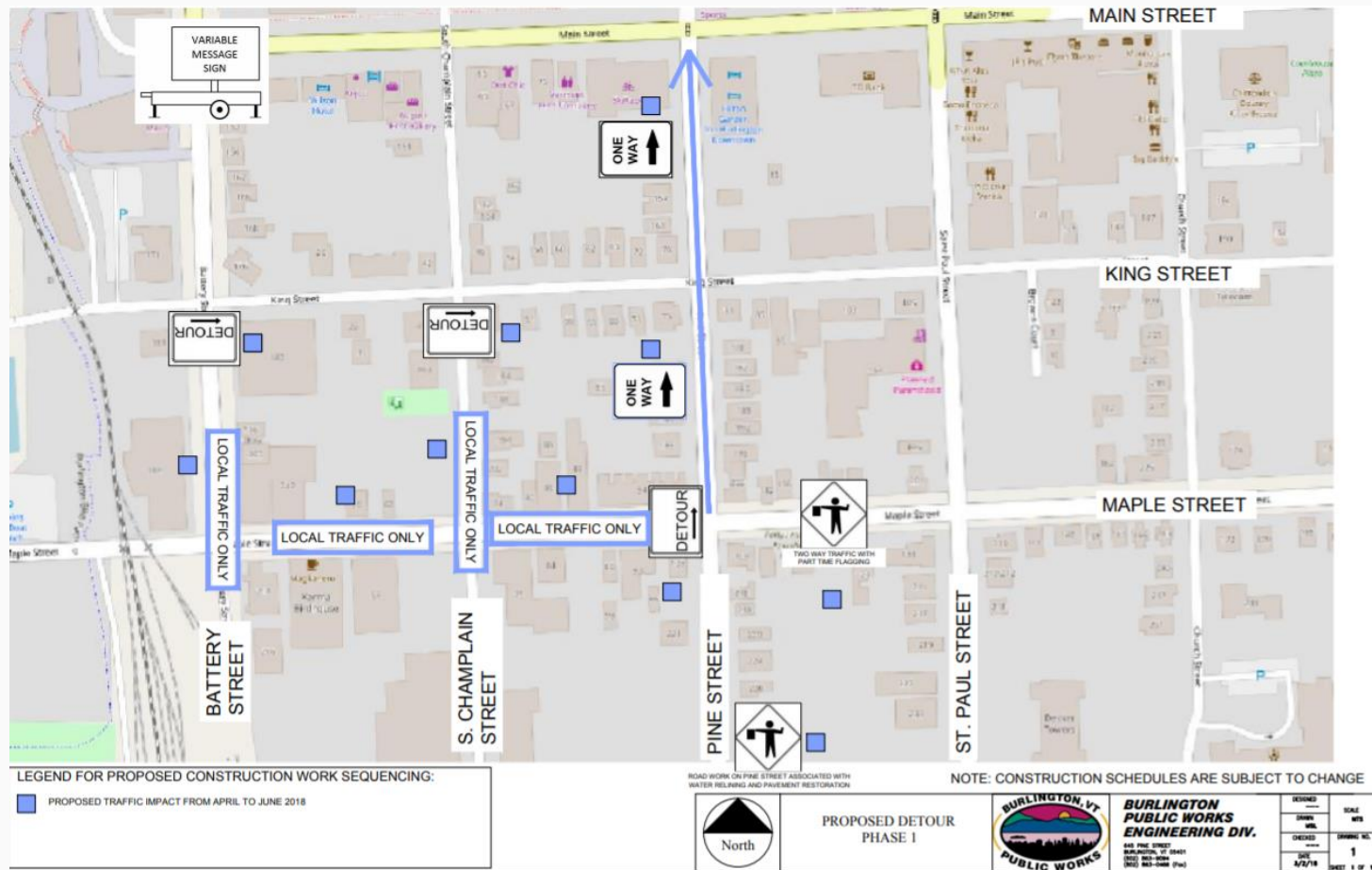
| | | | |
|--------|---------------------------|------------------------|-----------------|
| YEAR 1 | CAPITAL REINVESTMENT | Past Annual Investment | 2017 |
| | Paving | ~ 3 miles | 5.13 miles |
| | Sidewalk Reconstruction | ~ 1 mile | 3.0 miles total |
| | Water Main Relining | As needed | 1.78 miles |
| | Water Main Replacement | As needed | 0.44 miles |
| | Curb | As needed | 0.62 mile |
| | College St Parking Garage | --- | \$2.5m |
| | PREVENTATIVE MAINTENANCE | Past Annual Investment | 2017 |
| | Crack Sealing | 0 | 5.46 miles |
| | Sidewalk Cutting | 0 | \$50k |
| | | | |

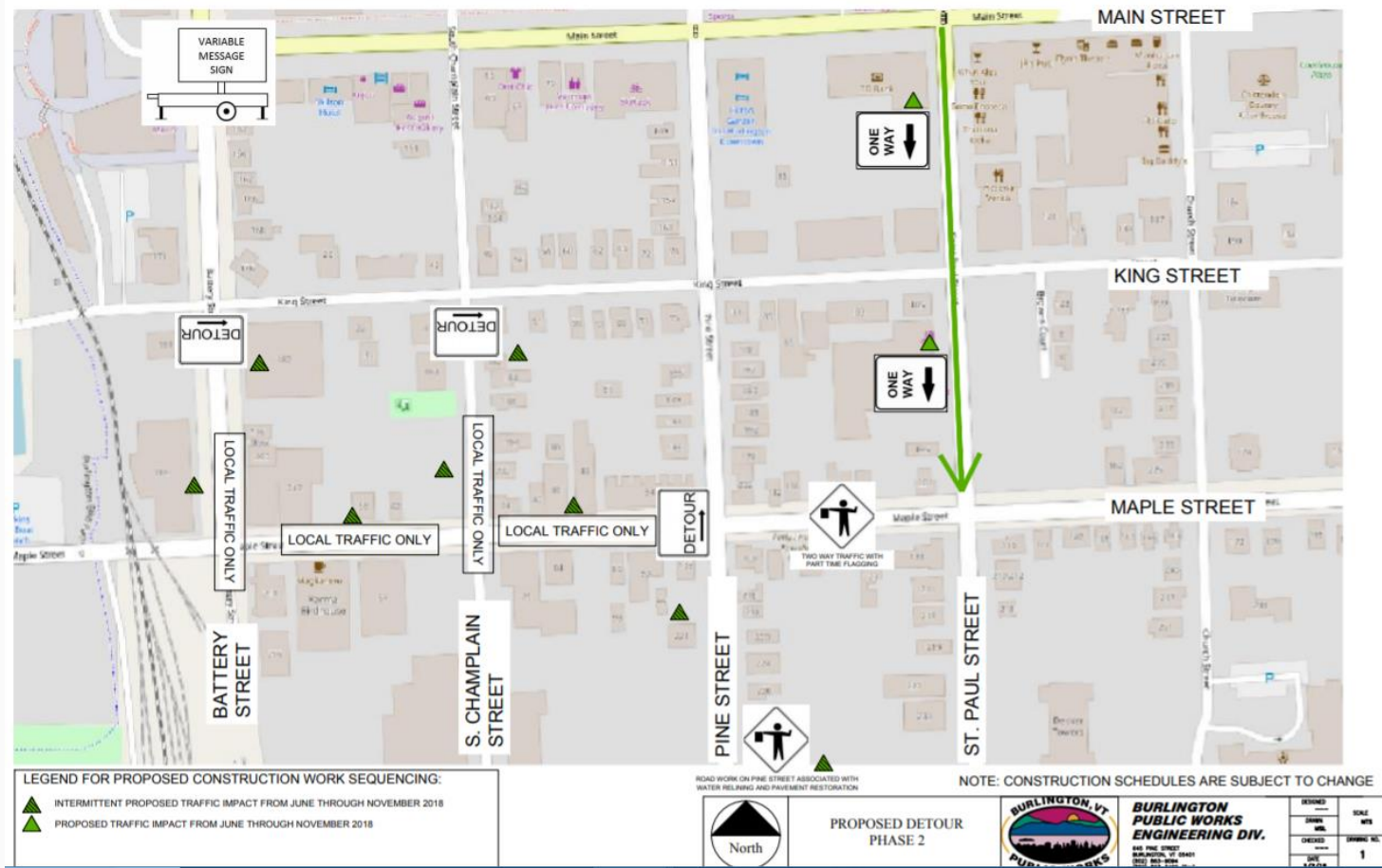
DRAFT SCHEDULE

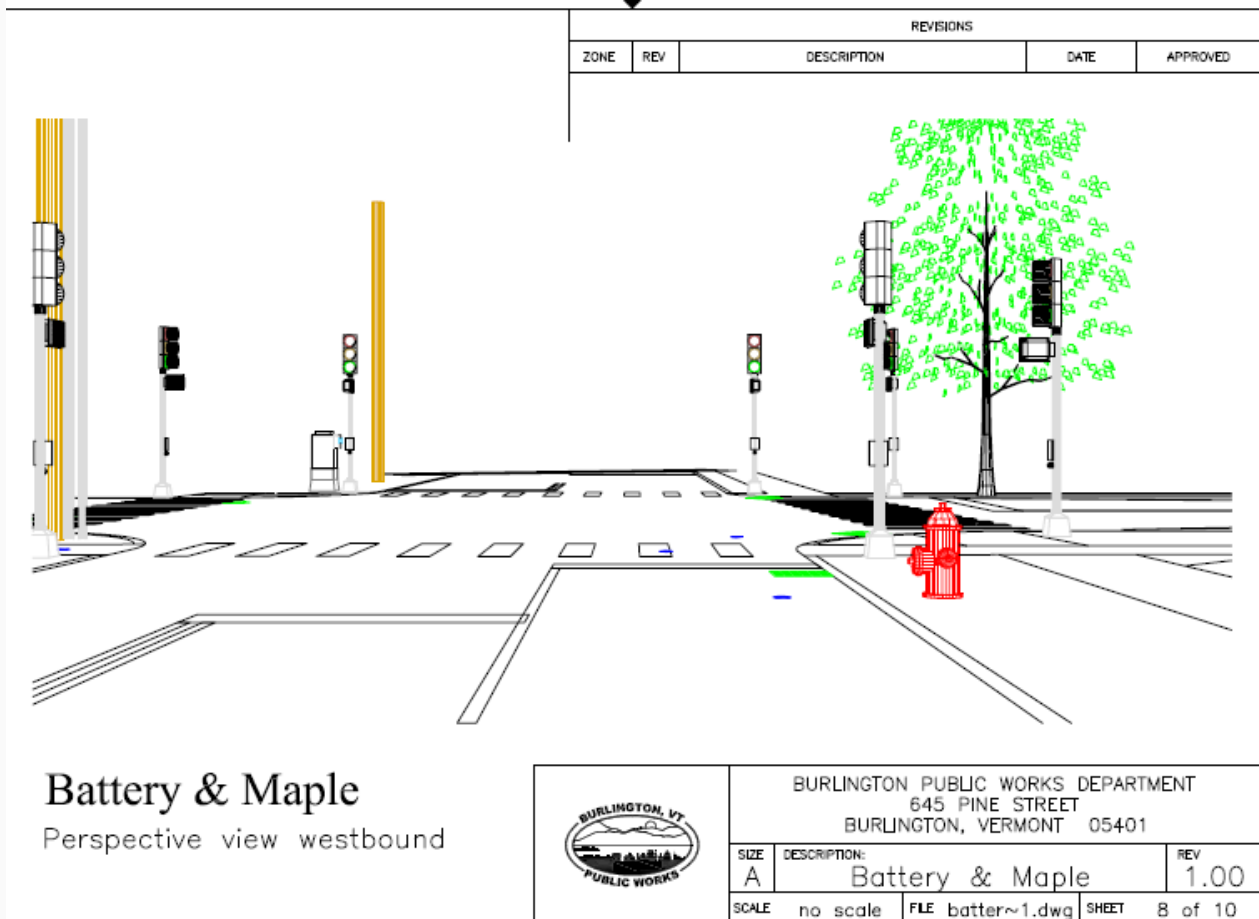
SUBJECT TO REVISION

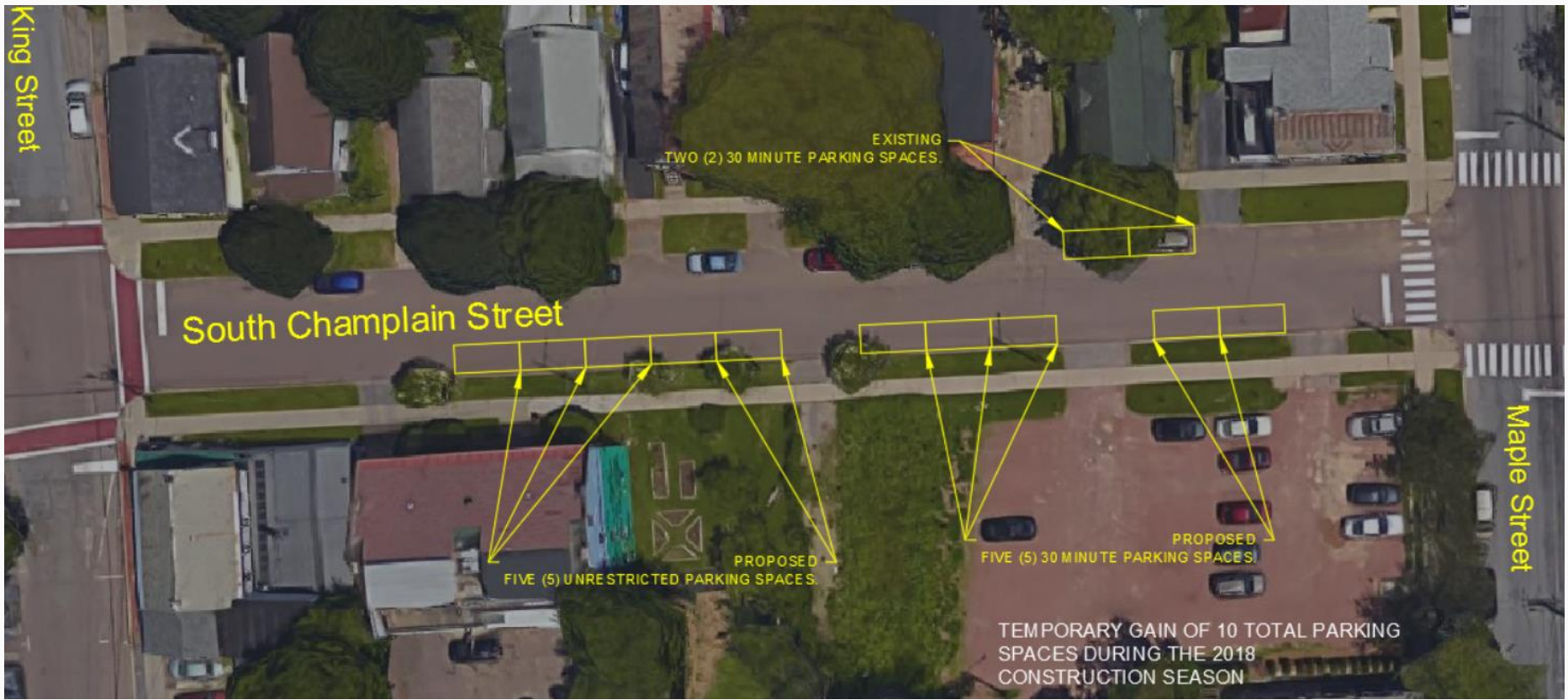
 =planned construction work
 =unplanned extra construction work window











TEMPORARY PARKING: S. CHAMPLAIN



TEMPORARY GAIN OF 11 TOTAL PARKING
SPACES DURING THE 2018
CONSTRUCTION SEASON

Pine Street

Maple Street

RESOURCES

- **Citywide Portal:** burlingtonvt.gov/construction
- **Lower Downtown:** burlingtonvt.gov/DPW/Reinvestment/Lower-Downtown
- **See-Click Fix:** seeclickfix.com
- **Water Service Inquiries:** 802-863-4501
- **General Customer Service:** 802-863-9094
- **Pressing Project Questions:** DPW Public Information Manager, Robert Goulding, 802-540-0846; RGoulding@burlingtonvt.gov