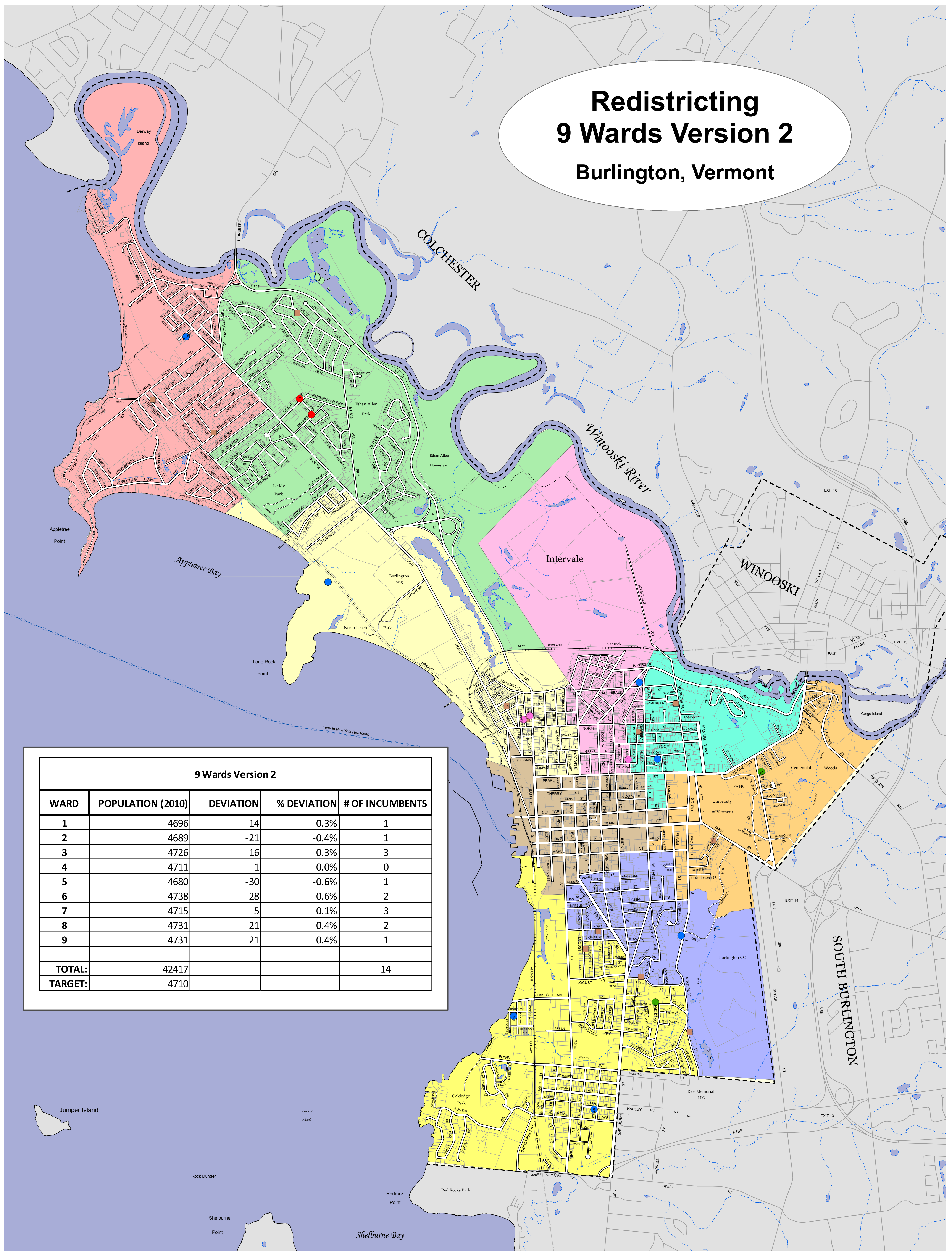


Redistricting 9 Wards Version 2 Burlington, Vermont



WARD	POPULATION (2010)	DEVIATION	% DEVIATION	# OF INCUMBENTS
1	4696	-14	-0.3%	1
2	4689	-21	-0.4%	1
3	4726	16	0.3%	3
4	4711	1	0.0%	0
5	4680	-30	-0.6%	1
6	4738	28	0.6%	2
7	4715	5	0.1%	3
8	4731	21	0.4%	2
9	4731	21	0.4%	1
TOTAL:	42417			14
TARGET:	4710			

Legend - 9 Ward Scenario

- Ward**
- 1 (Pink)
 - 2 (Blue)
 - 3 (Yellow)
 - 4 (Brown)
 - 5 (Cyan)
 - 6 (Light Pink)
 - 7 (Light Yellow)
 - 8 (Light Green)
 - 9 (Light Red)

City Council Members Party

- Democrat (Blue)
- Independent (Green)
- Progressive (Pink)
- Republican (Red)
- School Board Members (Brown)

City of Burlington GIS
<http://www.burlingtonvt.gov/>



Map Date: October 18, 2012
 MXD Saved: 10/18/2012

