

An aerial photograph of a city, likely Burlington, Vermont, showing a river, buildings, and green spaces. The image is slightly blurred and serves as a background for the text.

Protecting Yourself from Burglary:

Simple Steps You Can Take To Secure Your
Home, and Your Loved Ones

Presented by the Burlington Police Department

For the majority of burglaries in Burlington, entry is gained by the use of **unlocked doors or windows**, or through the use of low amounts of force such as breaking a window and reaching through to unlock the door.

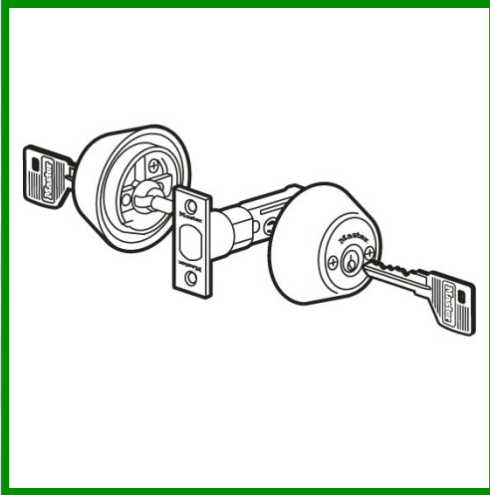


Simply by locking all your doors and windows, you can take advantage of your home's existing locks



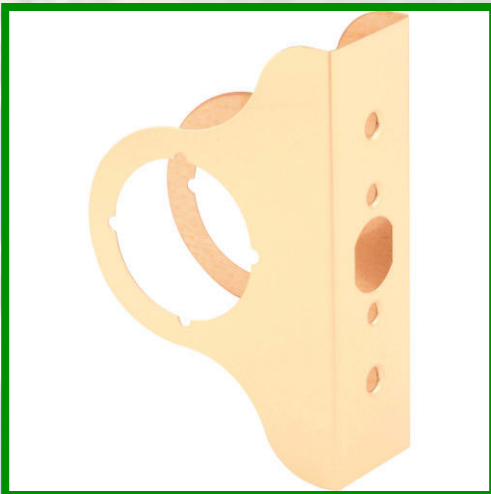
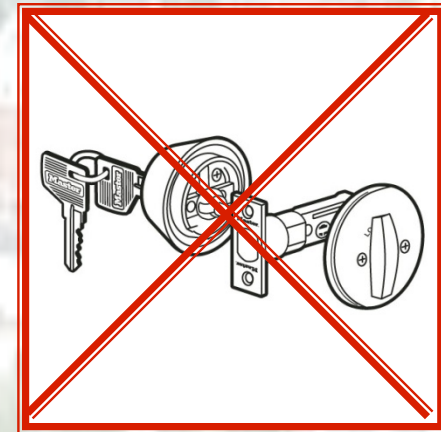
Door Security Measures



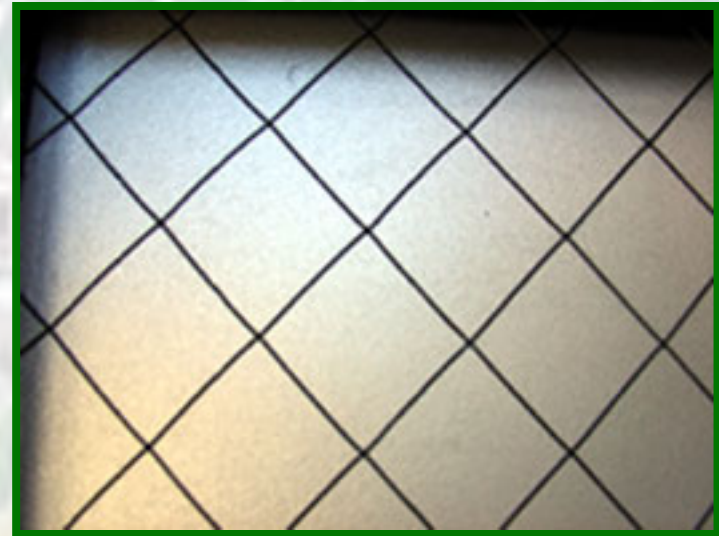


Upgrading your doors by installing a **KEY ONLY** deadbolt both increases the effort it takes to force the door open, and eliminates the ability to reach through an open or broken window and unlock it. Should only be used on doors not required for emergency evacuation.

Interior thumb-locks are easy to bypass with little effort if they are within easy reach of a window pane.



The addition of a reinforcing plate around the doorknob or lock and the latch mechanism adds further security, and often a cosmetic element as well



Replacing all the panes, or the panes close to the doorknob with wired or frosted security glass can be an additional deterrent to window breakage, and entry through the opening, in addition to preventing reach-through unlocks

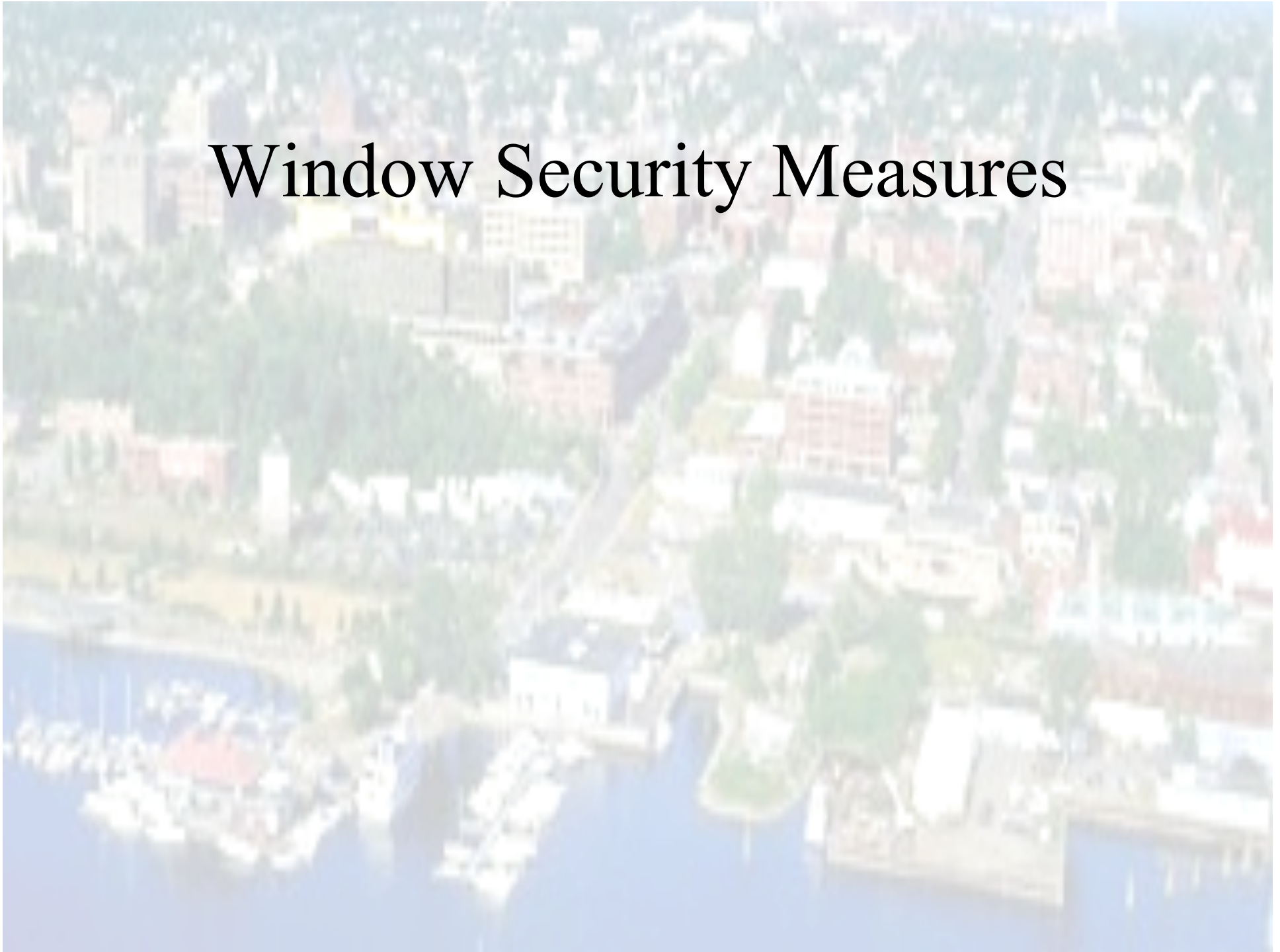


Peg-style door bars are an easy way to solidly secure a door, and require very little installation effort, or maintenance for most inward-swinging doors

Sliding Glass Doors almost always need an addition of a crossbar, or a floor lock to be even remotely secure. The addition of wired glass, or a decorative metal grating over the glass can increase resistance to breakage



Window Security Measures



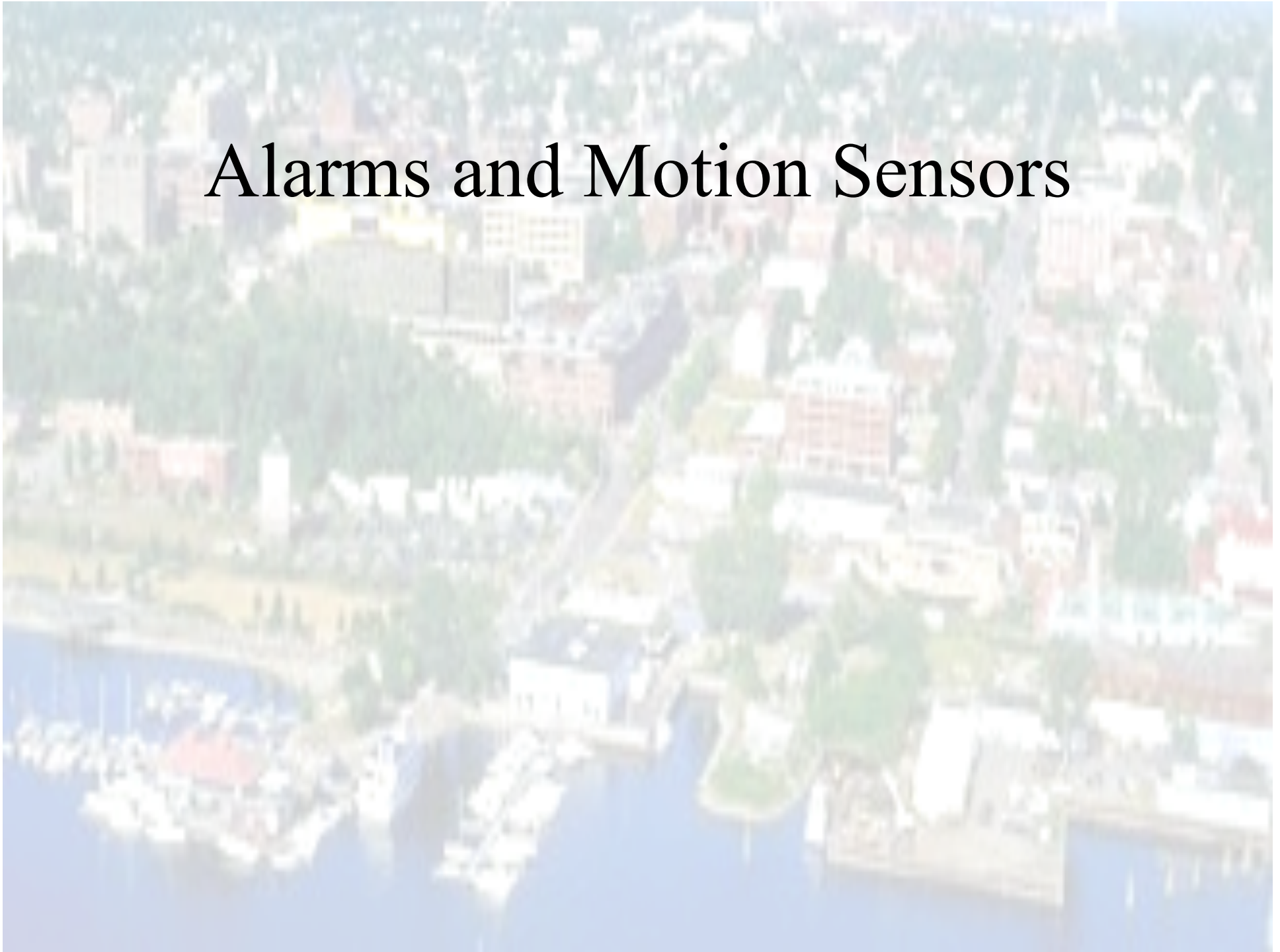


A variety of keyed window locks for both the corner and the sash are available at common hardware stores, and serve the same function as the key-only deadbolt on the door. Even if the window glass is broken, the window is still secured.



Decorative metal window dressing can also decrease the likelihood of breakage

Alarms and Motion Sensors



Simple electronic door alarms are available at most retail and hardware stores for relatively low prices. These devices generate loud sirens when the door or window is opened. The noise attracts neighbors attention, and encourages suspects to leave the area instead of taking their time finding your valuables



If nothing else, a loud siren in your home at night will encourage your neighbors to call the police if you are out of town.





A wide variety of motion-sensing lights are available. Some, like this model, simply screw into an existing bulb socket, and then the bulb screws into the unit. Great for inside garages and work sheds.

Other hardwire models replace outdoor floodlights with the combination sensor/light unit. Both are great for snapping on some bright light to scare off would-be thieves. Combined with audible alarms, your home is a lot less appealing.





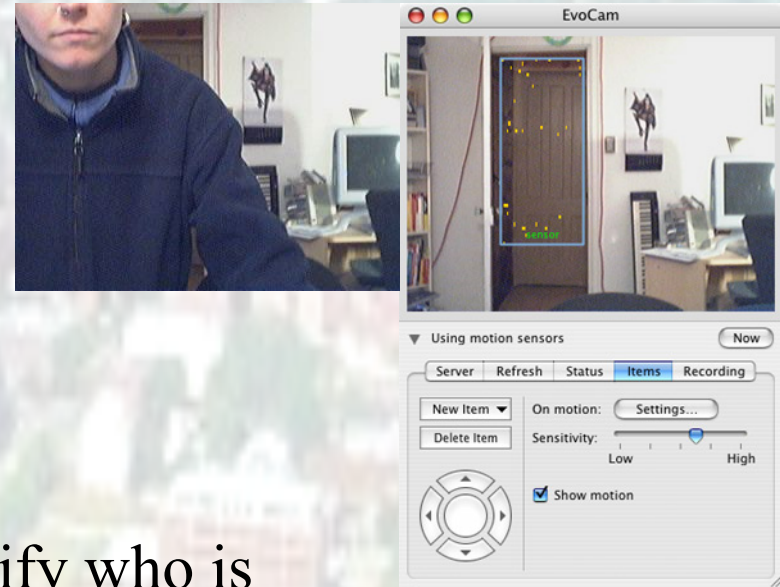
Other products such as LaserShield, Brinks Home Security and ADT offer professional motion sensor and alarm installation, as well as 24-hour monitoring of your home.



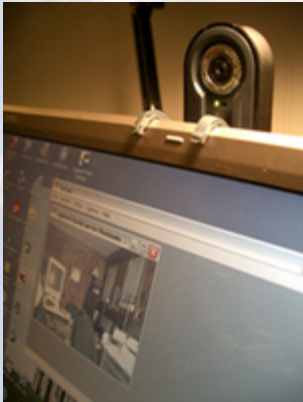
Digital Security / Tracking



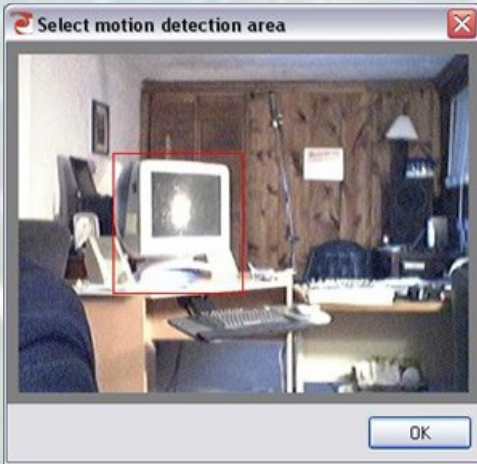
Computer Webcams can be set up to send images to your cellular phone, or other similar devices to notify you of activity in areas you set up on your computer



This allows you to identify who is in your home, without the danger of actually confronting them.



Webcams have become such a common accessory to personal home computers, their presence is not necessarily and alarming one.



Hidden digital cameras can also provide valuable still-frame evidence to help identify perpetrators of crime, and to provide proof of their actions, both in home and business settings.



The newer generations of cameras are smaller, and able to transmit wirelessly, or even to run on a battery, saving information to portable media, removing the need for a conventional system to monitor your valuables.

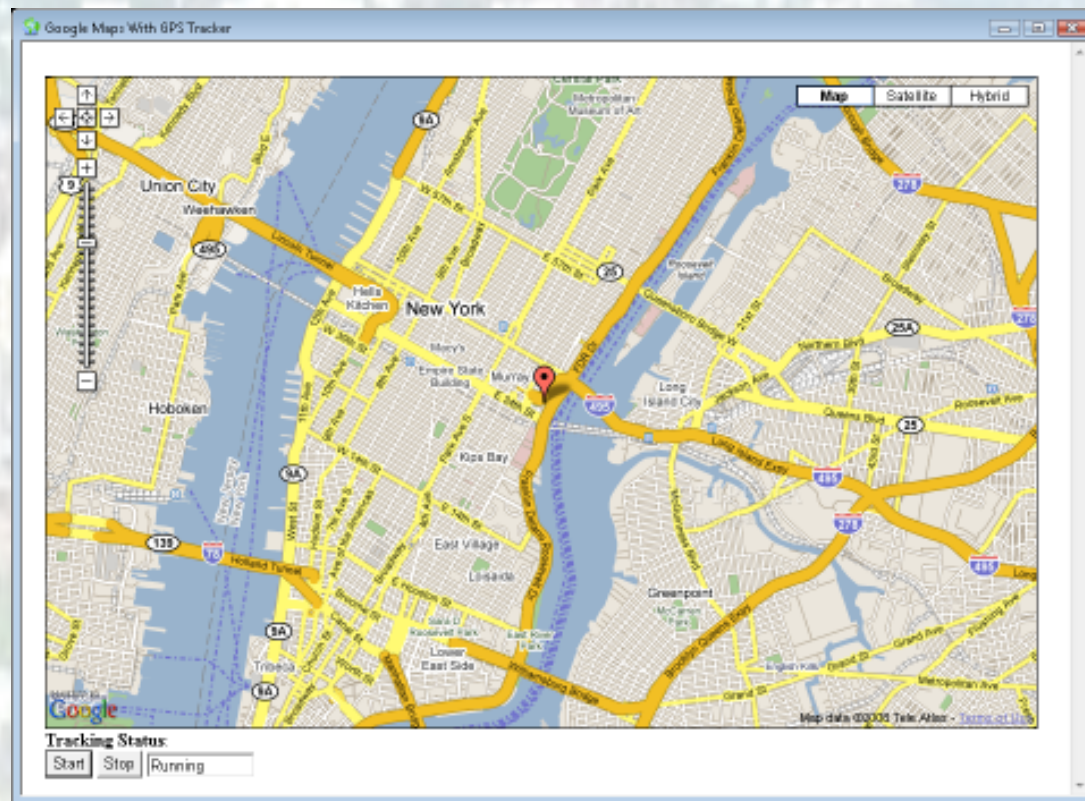


Digital surveillance cameras of all kinds are now available in a variety of nondescript items, creating the option for surveillance wherever desired, without the intrusion of an obvious camera.



Digital tracking devices, coupled with improved GPS and computer software now allow the placement of emitters onto persons, vehicles, property, and other valuables.

Devices are now build with size, weather resistance, and other use concerns in mind.



Being able to check the internet for the actual location of your missing goods or persons? Priceless!

Biological Deterrents

An aerial photograph of a city, likely Seattle, showing a dense urban area with numerous buildings and green spaces. A large body of water, possibly a river or harbor, is visible in the foreground, with a marina containing many boats. The text "Biological Deterrents" is overlaid in the center of the image.

Think Green! A wide variety of plants are both aesthetically pleasing, flowering, and VERY thorny. No one dressed in less than a suit of armor is going to want to stand in a thorn bush to try to open your windows.

Planting Berberis, Holly or Thistle under your windows can discourage intruders spending any time trying to open them.



Common Flowering Thorny Plants

PYRACANTHA

Large evergreen shrubs suitable for wall training or hedge. White flowers. May-June followed by red, orange or yellow berries in Autumn. Thorny branches. Grows 2-4" tall.

HIPPOPHAE RHAMNOIDES

Sea Buckthorn grows in any soil and is wind resistant with silver foliage and excellent thorns. This large shrub provides superb cover. Plant in groups of 3 to obtain berries.

BERBERIS OTTAWENSIS SUPERBA

Use as a hedge or an individual shrub. Deciduous barbed plant with beautiful purple foliage. Yellow flowers in Spring. Reaches 1.5-1.8m tall, allow two plants per meter.

BERBERIS STENOPHYLLA

Use as a hedge or shrub. Graceful evergreen with long arching prickly branches, masses of yellow flowers in Spring. Grows 1.8-2.5m tall, allow two plants per meter.

BERBERIS JULIANA

Prickly evergreen shrub with shiny dark leaves. Yellow flowers in Spring. Grows 1.2-1.8m tall.

ULEX EUROPAEUS

Common Gorse, viciously spiny. Yellow flowers April-May. Grows 1.2-1.8m tall. Plant in full sun.

MAHONIA BEALEI WINTER SUN

Prickly evergreen shrubs with fragrant yellow flowers in Winter and Spring. Grows 1.2-1.8m tall. Suitable for shade.

CRATAEGUS MONOGYNA

Common Hawthorn. Forms an impenetrable thorny hedge. Fast growing, wonderful sight in May and June with fragrant white flowers. Red haws in Autumn. Plant in staggered row 4 per meter. Prune to required height.

ILEX

Holly. Evergreen shrubs for hedging or individual shrub. Green or variegated available. Plant in sun or shade. Females produce berries when males present.

CLIMBING & RAMBLING ROSES

Useful to give added protection to walls and fences. Wide selection. Heights vary from 2.7m.

ROSA RUGOSA RUBRA-CRIMSON

Fragrant old fashioned rose - densely prickly for hedges or individual shrubs. Grows up to 2m tall. Red, white or purple flowers followed by hips in Autumn.

ROSA BLANC DOUBLE DE COUBERT - WHITE

Fragrant Old Fashioned Rose - densely prickly for hedges or individual shrubs up to 2m high.

An aerial photograph of a city, likely New York City, showing a dense urban landscape with a river in the foreground. The image is slightly blurred and has a light blue tint, serving as a background for the text.

You Can Help Us Protect You.

Simply by locking your doors and windows, upgrading your locks, and adding a few lights or flowering plants, you can take an active role in decreasing the vulnerability of your home.

Keep a list of Make / Model / Serial Numbers for all traceable valuables such as Televisions, Electronics, Firearms, Bicycles, Tools, and so on.

Help us, Help You!